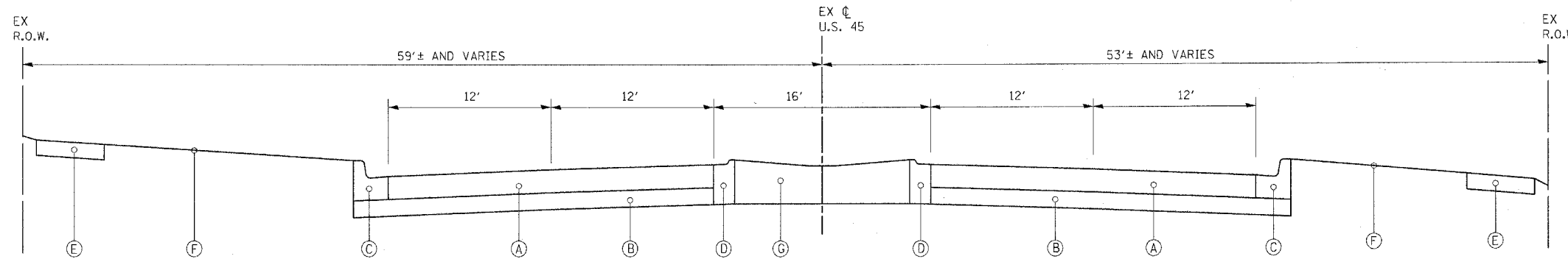
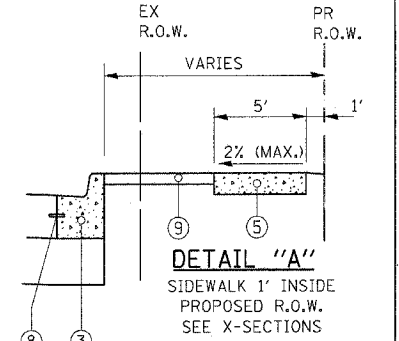


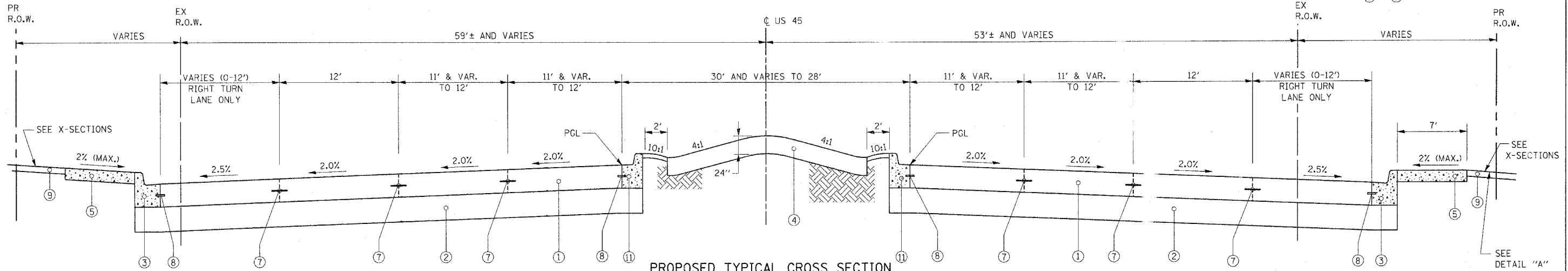
F.A.D. RTE.	SECTION	COUNTY	TOTAL SHEETS	SHEET NO.
351	537 R-1	COOK	245	15

STA. \_\_\_\_\_ TO STA. \_\_\_\_\_  
 FED. ROAD DIST. NO. \_\_\_\_\_ ILLINOIS FED. AID PROJECT

CONTRACT # 62880



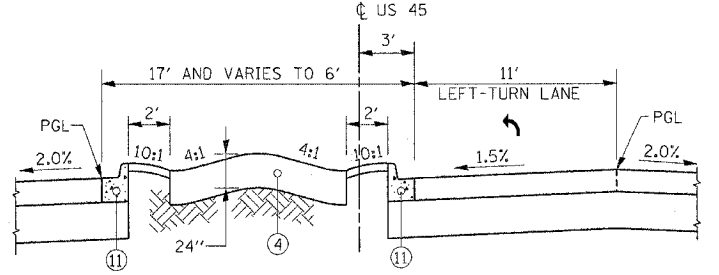
**EXISTING TYPICAL CROSS SECTION**  
 U.S. ROUTE 45 (LAGRANGE ROAD)



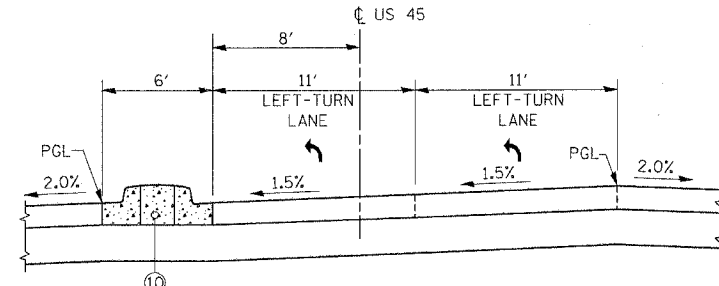
**PROPOSED TYPICAL CROSS SECTION**  
 U.S. ROUTE 45 (LAGRANGE ROAD)  
 STA 163+53.28 TO STA 178+86.26

- EXISTING LEGEND**
- (A) EXISTING CONCRETE PAVEMENT, 8"
  - (B) EXISTING SUBBASE, 6"
  - (C) EXISTING CURB AND GUTTER, TYPE B-6.24
  - (D) EXISTING CONCRETE CURB & GUTTER TYPE M-6.12
  - (E) EXISTING SIDEWALK
  - (F) PARKWAY (GRASS AREA)
  - (G) EXISTING CONCRETE MEDIAN

- PROPOSED LEGEND**
- (1) PORTLAND CEMENT PAVEMENT (JOINTED), 10"
  - (2) AGGREGATE SUBGRADE, 12"
  - (3) COMBINATION CONCRETE CURB AND GUTTER, TYPE B6.24
  - (4) LANDSCAPING (SEE LANDSCAPING PLANS FOR DETAILS)
  - (5) PORTLAND CONCRETE CEMENT SIDEWALK, 5"
  - (6) NOT USED
  - (7) LONGITUDINAL CONSTRUCTION JOINT GROUDED IN PLACE, No. 6 TIE BAR AT 24" LONG, DEFORMED (EPOXY COATED) AT 24" CTS. (INCLUDED IN THE COST OF THE PROPOSED PAVEMENT)
  - (8) No. 6 TIE BAR AT 24" LONG, DEFORMED (EPOXY COATED) AT 24" CTS. (INCLUDED IN THE COST OF THE PROPOSED CURB AND GUTTER)
  - (9) TOPSOIL AND SEED (SALT TOLERANT, SEE LANDSCAPING SHEETS)
  - (10) CONCRETE MEDIAN, TYPE SB-6.18
  - (11) COMBINATION CONCRETE CURB AND GUTTER, TYPE B6.18



**LANDSCAPE MEDIAN DETAIL**  
 AT SINGLE LEFT TURN LANE



**MEDIAN DETAIL**  
 AT DUAL LEFT TURN LANES  
 (SEE DISTRICT STANDARD 606301-02)

STRUCTURAL DESIGN TRAFFIC: Year 2015

PV= 49,943 SU= 1,629 MU= 2,714

ROAD/STREET CLASSIFICATION: Class I

PERCENT OF STRUCTURAL DESIGN TRAFFIC IN DESIGN LANE:  
 P= 8.0% S= 37% M= 37%

TRAFFIC FACTOR: Actual TF = 15.73%  
 Minimum TF = 4.95%

P.C.C. PAVEMENT - JOINTED = 10 Inch

SUBGRADE SUPPORT RATING:  
 SSR = POOR

**SUPERPAVE MIX DESIGN**

TEMPORARY PAVEMENT			
MIX TYPE	MAX RAP %	VOIDS	AC TYPE
BITUMINOUS BASE COURSE, SUPER PAVE, 8"	50	2% @ 50 Gyr.	PG 58-22
BITUMINOUS CONCRETE SURFACE COURSE, SUPERPAVE, MIX "D", N50 2"	15	4% @ 50 Gyr.	PG 64-22

**REVISIONS**

NAME	DATE

ILLINOIS DEPARTMENT OF TRANSPORTATION  
 US RTE 6 (159TH ST) AT US RTE 45 (LAGRANGE RD)

**US RTE 45 (LAGRANGE ROAD)**  
 TYPICAL SECTIONS

SCALE: N.T.S. DRAWN BY: JPW  
 DATE: 7-07-06 CHECKED BY: RCH

**McDonough Associates Inc.**  
 Engineers / Architects

I:\Dgn\ts01001.sh.t  
 7/31/2006  
 12:03:21 PM