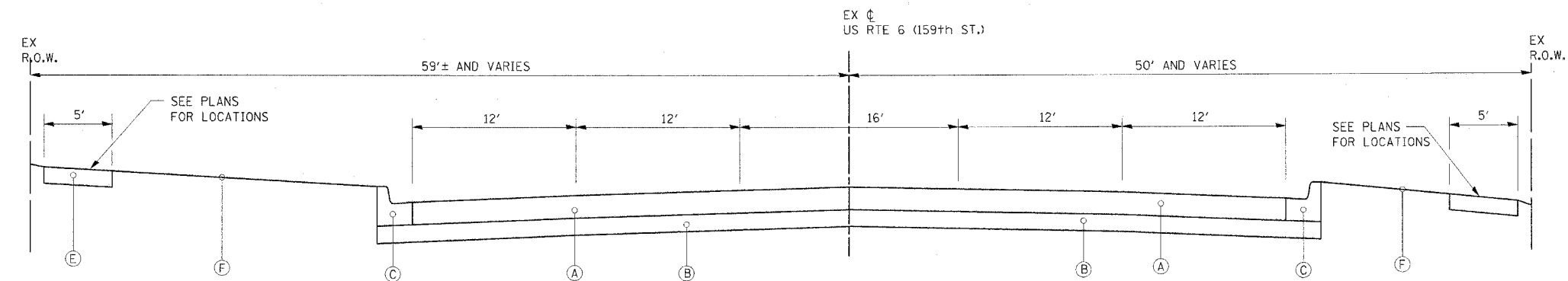
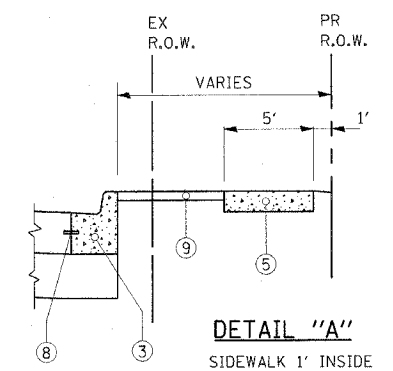


E.A.P. RTE.	SECTION	COUNTY	TOTAL SHEETS	SHEET NO.
351	537 R-1	COOK	245	17
STA.	TO STA.			
FED. ROAD DIST. NO.	ILLINOIS	FED. AID PROJECT		

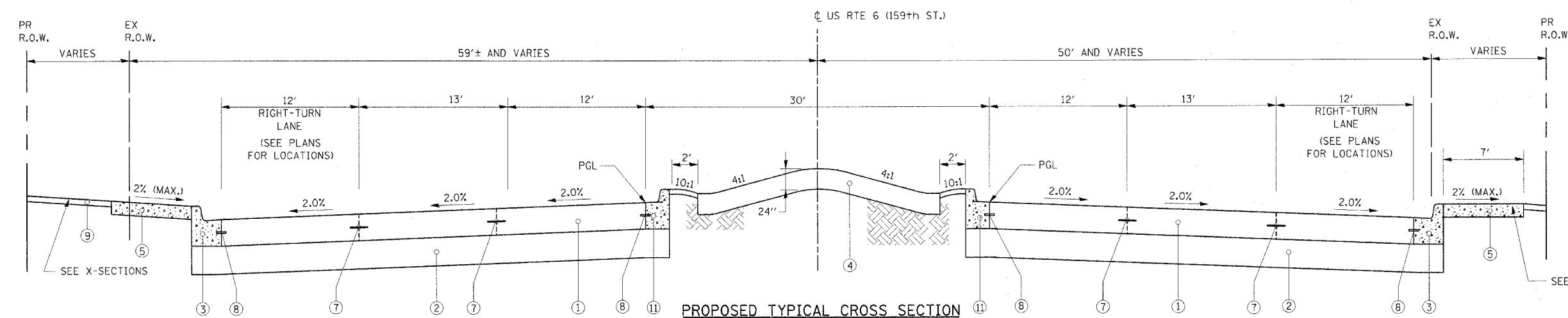
CONTRACT # 62880



EXISTING TYPICAL CROSS SECTION
U.S. ROUTE 6 (159TH STREET)



DETAIL "A"
SIDEWALK 1' INSIDE PROPOSED R.O.W. SEE X-SECTIONS



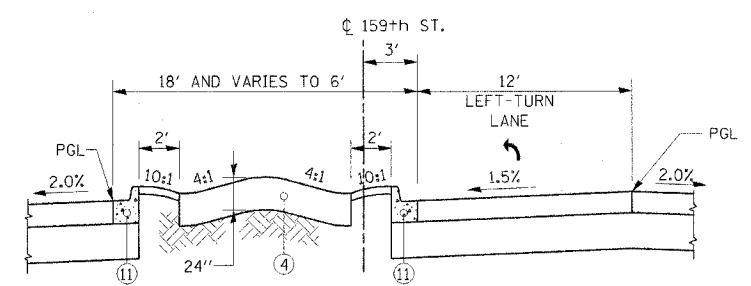
PROPOSED TYPICAL CROSS SECTION
U.S. ROUTE 6 (159TH STREET)
STA 421+18.46 TO STA 447+53.93

EXISTING LEGEND

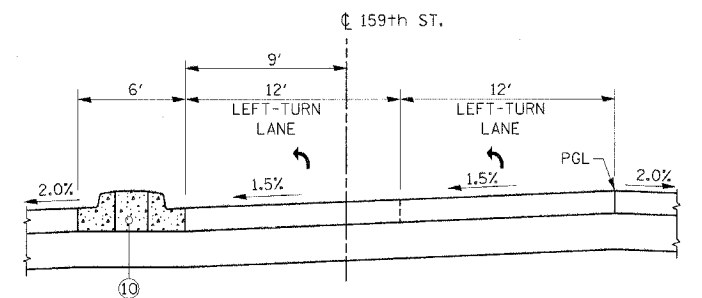
- (A) EXISTING CONCRETE PAVEMENT, 8"
- (B) EXISTING SUBBASE, 6"
- (C) EXISTING CURB AND GUTTER, TYPE B-6.24
- (D) EXISTING CONCRETE CURB & GUTTER TYPE M-6.12
- (E) EXISTING SIDEWALK
- (F) PARKWAY (GRASS AREA)
- (G) EXISTING CONCRETE MEDIAN

PROPOSED LEGEND

- (1) PORTLAND CEMENT PAVEMENT (JOINTED), 10"
- (2) AGGREGATE SUBGRADE, 12"
- (3) COMBINATION CONCRETE CURB AND GUTTER, TYPE B6.24
- (4) LANDSCAPING (SEE LANDSCAPING PLANS FOR DETAILS)
- (5) PORTLAND CONCRETE CEMENT SIDEWALK, 5"
- (6) NOT USED
- (7) LONGITUDINAL CONSTRUCTION JOINT GROUTED IN PLACE, No. 6 TIE BAR AT 24" LONG, DEFORMED (EPOXY COATED) AT 24" CTS. (INCLUDED IN THE COST OF THE PROPOSED PAVEMENT)
- (8) No. 6 TIE BAR AT 24" LONG, DEFORMED (EPOXY COATED) AT 24" CTS. (INCLUDED IN THE COST OF THE PROPOSED CURB AND GUTTER)
- (9) TOPSOIL AND SOD OR SEED (SALT TOLERANT, SEE LANDSCAPING SHEETS)
- (10) CONCRETE MEDIAN, TYPE SB-6.18
- (11) COMBINATION CONCRETE CURB AND GUTTER, TYPE B6.18



LANDSCAPE MEDIAN DETAIL AT SINGLE LEFT TURN LANE



MEDIAN DETAIL AT DUAL LEFT TURN LANES

(SEE DISTRICT STANDARD 606301-02)

STRUCTURAL DESIGN TRAFFIC:	Year <u>2015</u>
PV= <u>49,943</u>	SU= <u>1,629</u> MU= <u>2,714</u>
ROAD/STREET CLASSIFICATION:	Class <u>I</u>
PERCENT OF STRUCTURAL DESIGN TRAFFIC IN DESIGN LANE:	
P= <u>8.0%</u>	S= <u>37%</u> M= <u>37%</u>
TRAFFIC FACTOR:	Actual TF = <u>15.73%</u>
	Minimum TF = <u>4.95%</u>
P.C.C. PAVEMENT - JOINTED = <u>10 Inch</u>	
SUBGRADE SUPPORT RATING:	SSR = <u>POOR</u>

REVISIONS	
NAME	DATE

ILLINOIS DEPARTMENT OF TRANSPORTATION
US RTE 6 (159TH ST) AT US RTE 45 (LAGRANGE RD)
US RTE 6 (159TH STREET) TYPICAL SECTIONS
SCALE: N.T.S. DRAWN BY: JPW
DATE: 7-07-06 CHECKED BY: RCH
McDonough Associates Inc.
Engineers/Architects