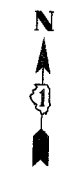
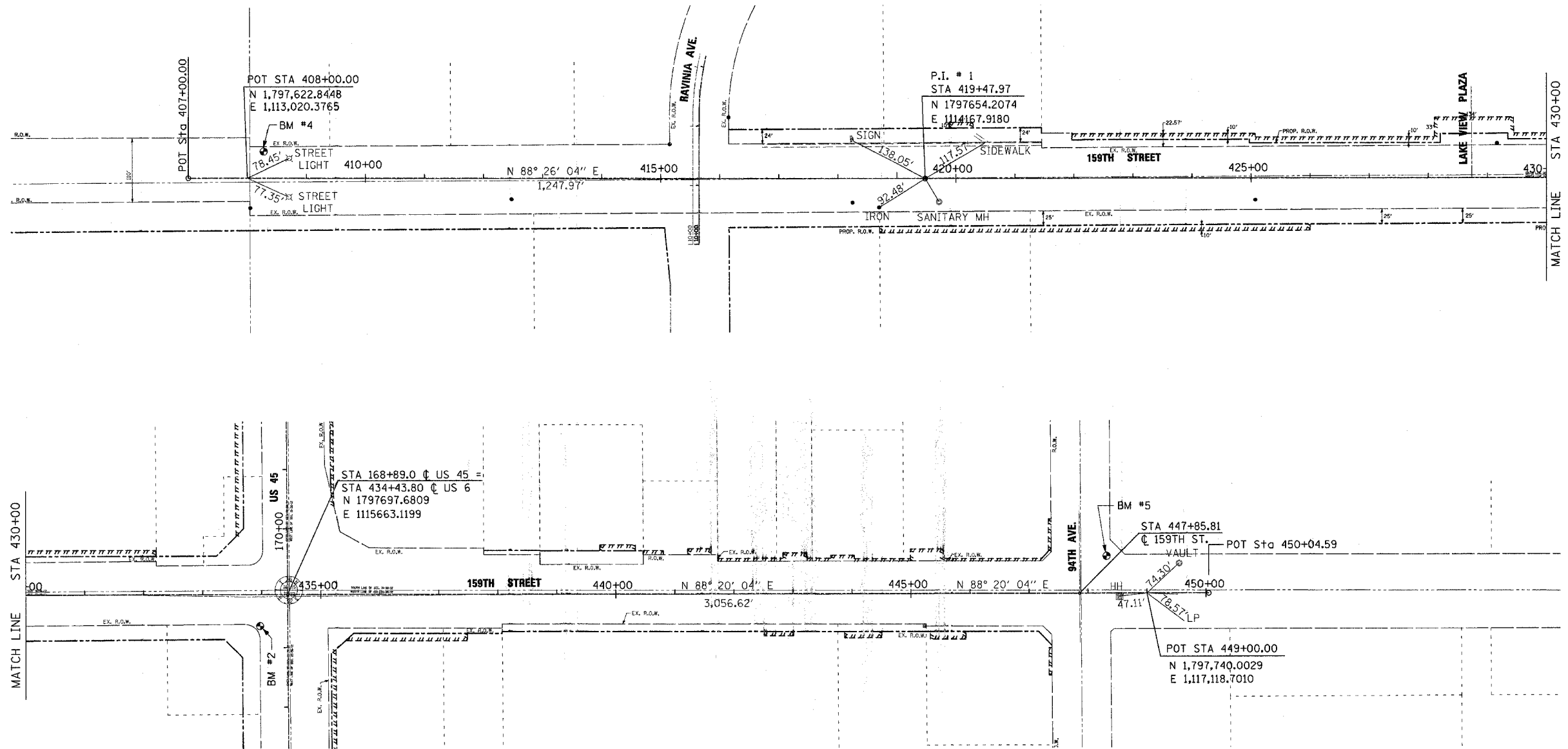


F.A.P. R.T.E.	SECTION	COUNTY	TOTAL SHEETS	SHEET NO.
351	537 R-1	COOK	245	28
STA. _____		TO STA. _____		
FED. ROAD DIST. NO. _____		ILLINOIS	FED. AID PROJECT	
CONTRACT # 62880				



CONTROL POINTS/BENCHMARKS:

<p>BM #2: APPROXIMATE STA. 168+36± SEE DRAWING TB-2 FOR BENCHMARK DATA</p>	<p>BM #4: APPROXIMATE STA. 408+28± IRON ROD CONTROL POINT ELEVATION = 685.50 NORTHING = 1797668.6326 EASTING = 1113046.6994</p>	<p>BM #5: APPROXIMATE STA. 448+32± IRON ROD CONTROL POINT ELEVATION = 703.06 NORTHING = 1797800.7929 EASTING = 1117048.4352</p>
--------------------------------------------------------------------------------	-------------------------------------------------------------------------------------------------------------------------------------------------	-------------------------------------------------------------------------------------------------------------------------------------------------

REVISIONS	
NAME	DATE

ILLINOIS DEPARTMENT OF TRANSPORTATION
US RTE 6 (159TH ST) AT US RTE 45 (LAGRANGE RD)
**US RTE 45 (LAGRANGE ROAD)
ALIGNMENT TIES & BENCHMARKS
STA 408+00 TO 94TH AVENUE**

SCALE: 1"=100'
DATE: 7-07-06

DRAWN BY: JTF
CHECKED BY: RCH

McDonough Associates Inc.
Engineers / Architects

FILES
DATES
TIMES