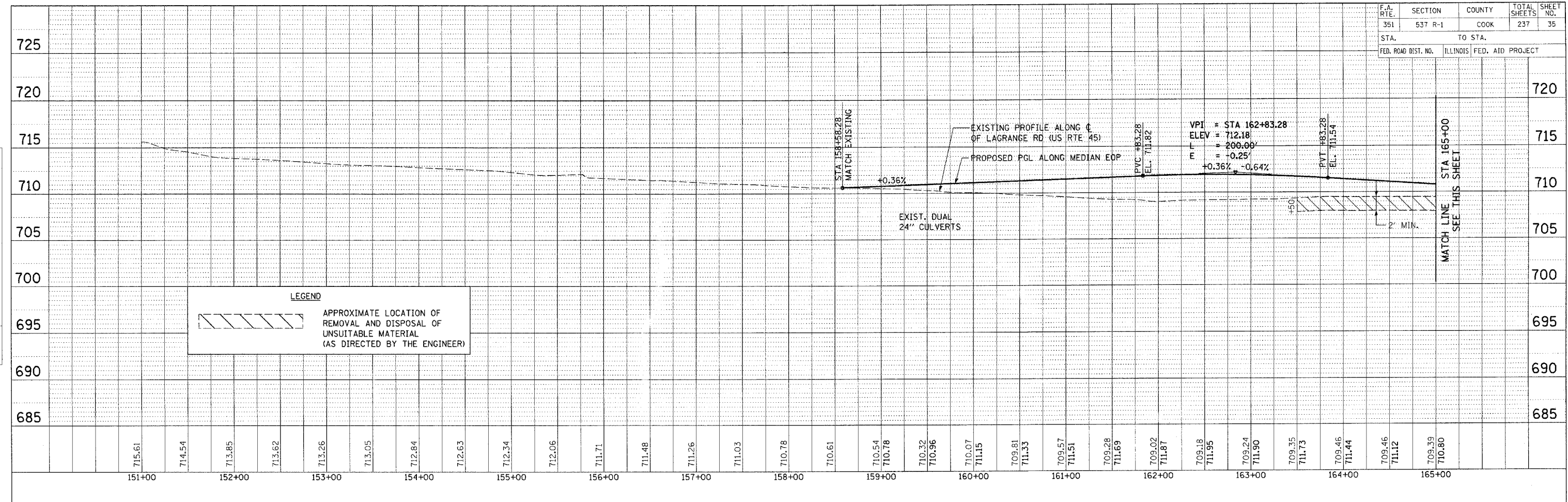
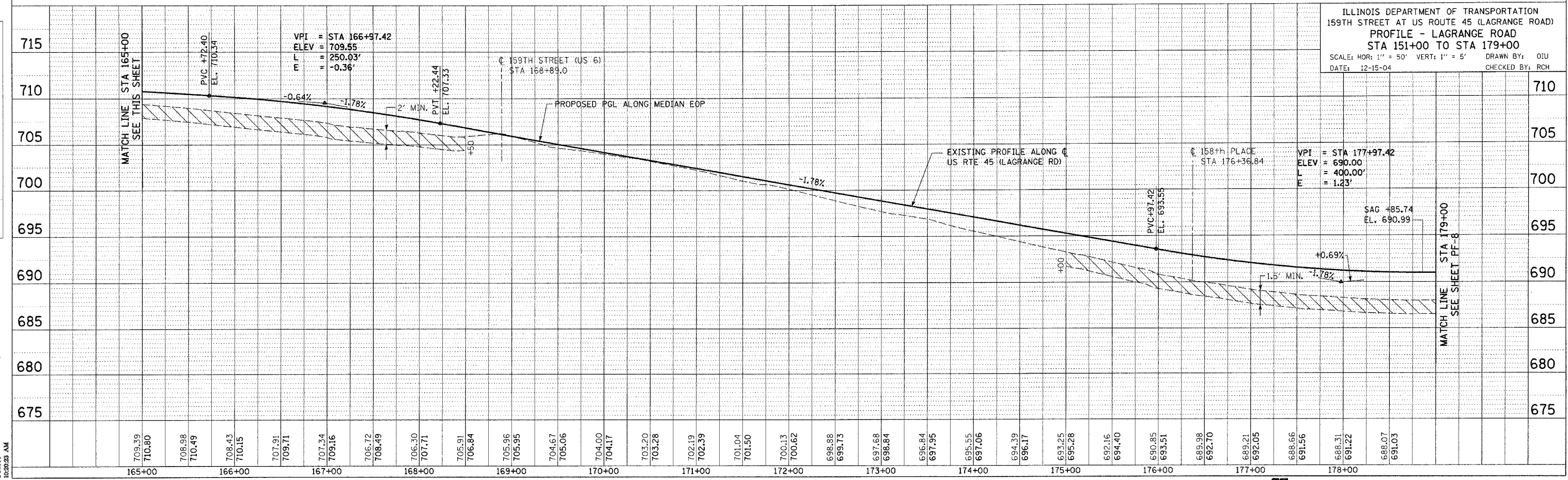


F.A. RTE.	SECTION	COUNTY	TOTAL SHEETS	SHEET NO.
351	537 R-1	COOK	237	35
STA.		TO STA.		
FED. ROAD DIST. NO.		ILLINOIS	FED. AID PROJECT	

PLAN	SURVEYED	BY	DATE
NOTE BOOK NO.	ALIGNED		
	RET. OF WAY CHECKED		
	VOID FILE NAME		



PROFILE	SURVEYED	BY	DATE
NOTE BOOK NO.	ALIGNED		
	RET. OF WAY CHECKED		
	STRUCTURE NOTATIONS CHECKED		



I:\Dgn\g101007.dwg  
 8/22/06  
 10:20:23 AM

US 45/LAGRANGE ROAD

**McDonough Associates Inc.**  
 Engineers/Architects

**PF-7**

8-8-06