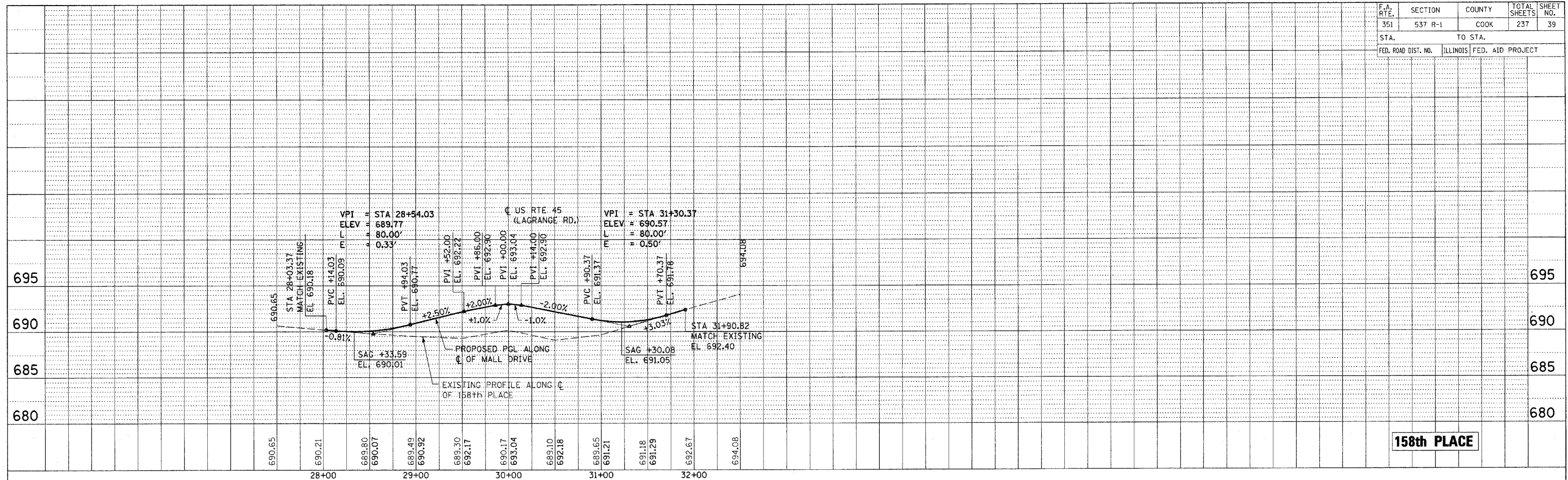


F.A. RTE.	SECTION	COUNTY	TOTAL SHEETS	SHEET NO.
351	537 R-1	COOK	237	39
STA.		TO STA.		
FED. ROAD DIST. NO.		ILLINOIS	FED. AID PROJECT	

PLAN
 REVISIONS
 DATE
 BY
 CHECKED
 ALIGNED
 NOTE BOOK NO.
 CHECKED
 DATE
 FILE NAME



PROFILE
 REVISIONS
 DATE
 BY
 CHECKED
 GRADES
 NOTE BOOK NO.
 CHECKED
 DATE
 NOTATIONS
 CHECKED

ILLINOIS DEPARTMENT OF TRANSPORTATION
 159TH STREET AT US ROUTE 45 (LAGRANGE ROAD)
PROFILE - 158th PLACE
 SCALE: HOR: 1" = 50' VERT: 1" = 5'
 DATE: 12-15-04 DRAWN BY: OIU
 CHECKED BY: RCH

SPILLS
 SDATES
 FTIMES