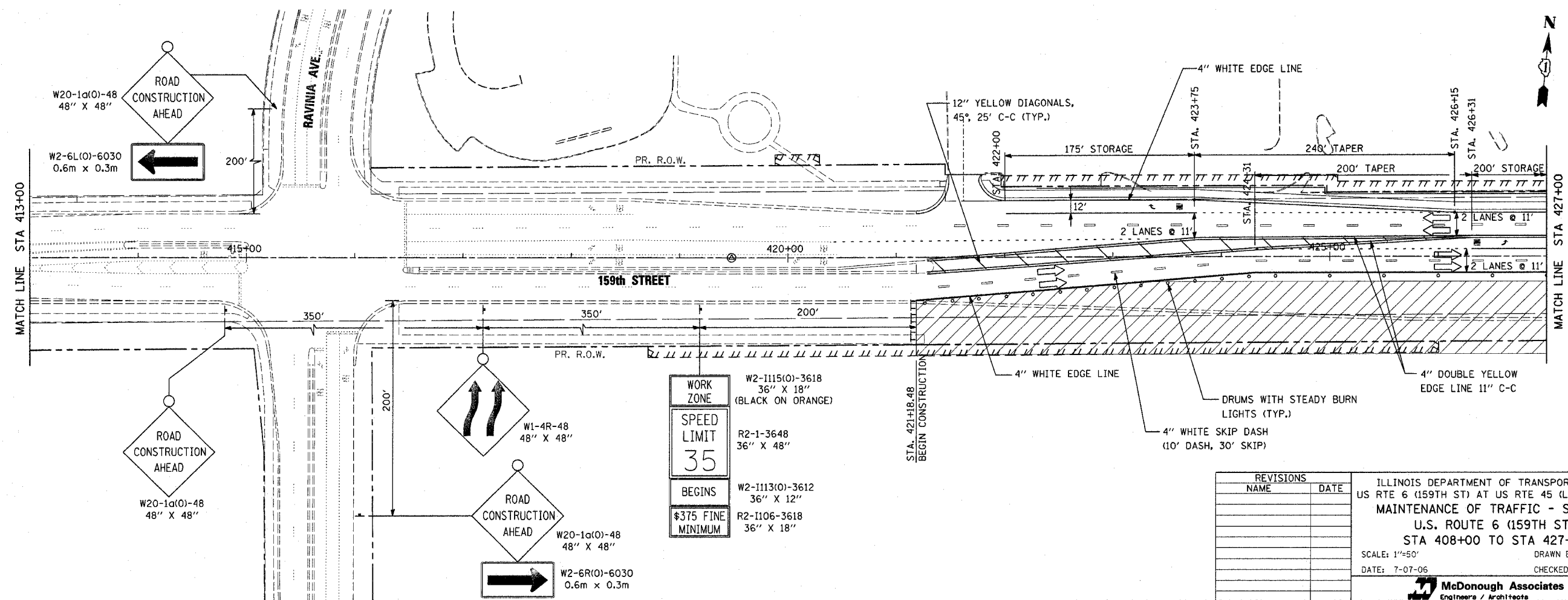
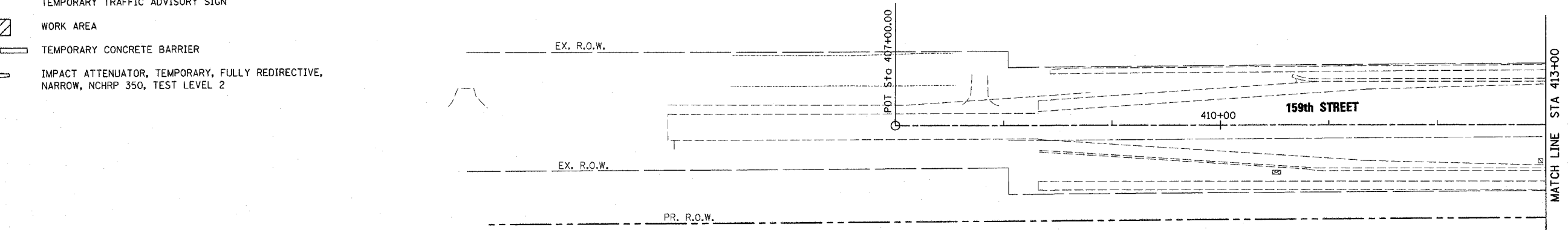


STATE	SECTION	COUNTY	TOTAL SHEETS	SHEET NO.
351	537 R-1	COOK	245	57
STA.		TO STA.		
FED. ROAD DIST. NO.		ILLINOIS FED. AID PROJECT		
CONTRACT # 62880				

LEGEND

- TYPE II BARRICADE WITH MONO-DIRECTIONAL STEADY BURN LIGHTS AT 50' CENTERS, 25' IN TAPERS AND 10' IN RADII (TYP.) SEE NOTE 1.
- ┌ TYPE III BARRICADE WITH LIGHT
- ➔ TRAFFIC LANE
- ⊥ TEMPORARY TRAFFIC ADVISORY SIGN
- ▨ WORK AREA
- ▬ TEMPORARY CONCRETE BARRIER
- ▴ IMPACT ATTENUATOR, TEMPORARY, FULLY REDIRECTIVE, NARROW, NCHRP 350, TEST LEVEL 2



WORK ZONE	W2-1115(O)-3618 36" X 18" (BLACK ON ORANGE)
SPEED LIMIT	R2-1-3648 36" X 48" 35
BEGINS	W2-1113(O)-3612 36" X 12"
\$375 FINE MINIMUM	R2-1106-3618 36" X 18"

REVISIONS	
NAME	DATE

ILLINOIS DEPARTMENT OF TRANSPORTATION
 US RTE 6 (159TH ST) AT US RTE 45 (LAGRANGE RD)
 MAINTENANCE OF TRAFFIC - STAGE 3
 U.S. ROUTE 6 (159TH ST.)
 STA 408+00 TO STA 427+00
 SCALE: 1"=50' DRAWN BY: TRK
 DATE: 7-07-06 CHECKED BY: RCH

McDonough Associates Inc.
 Engineers / Architects

FILES
 SDATES
 STIMDS

FOR CONTINUATION SEE DRAWING MT-21