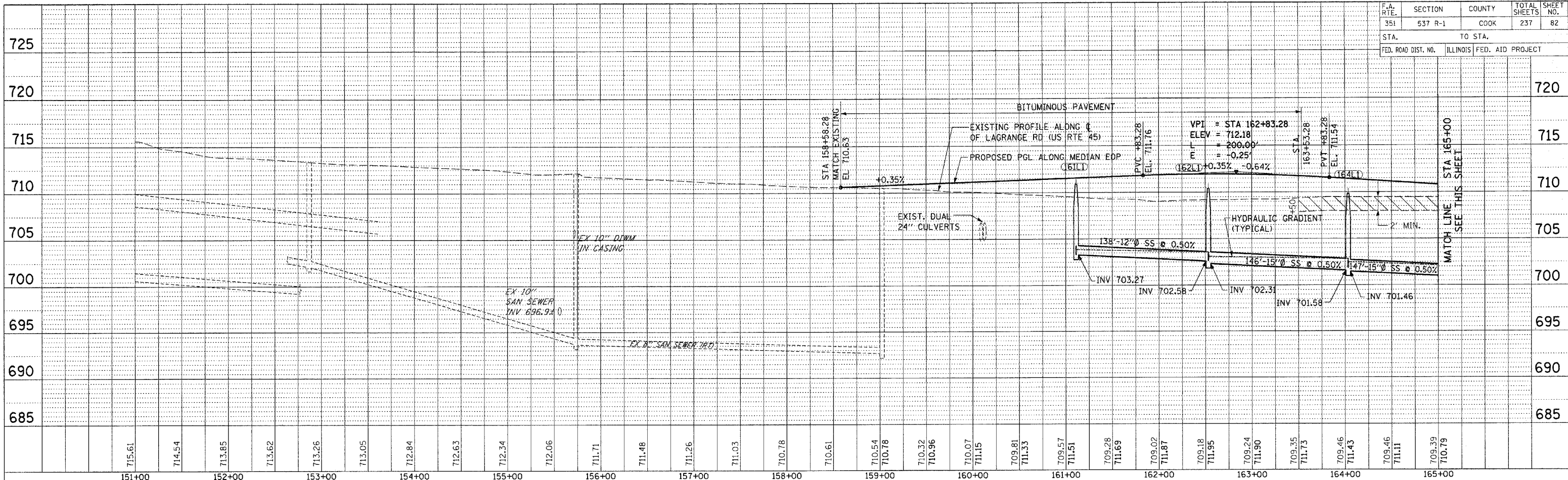
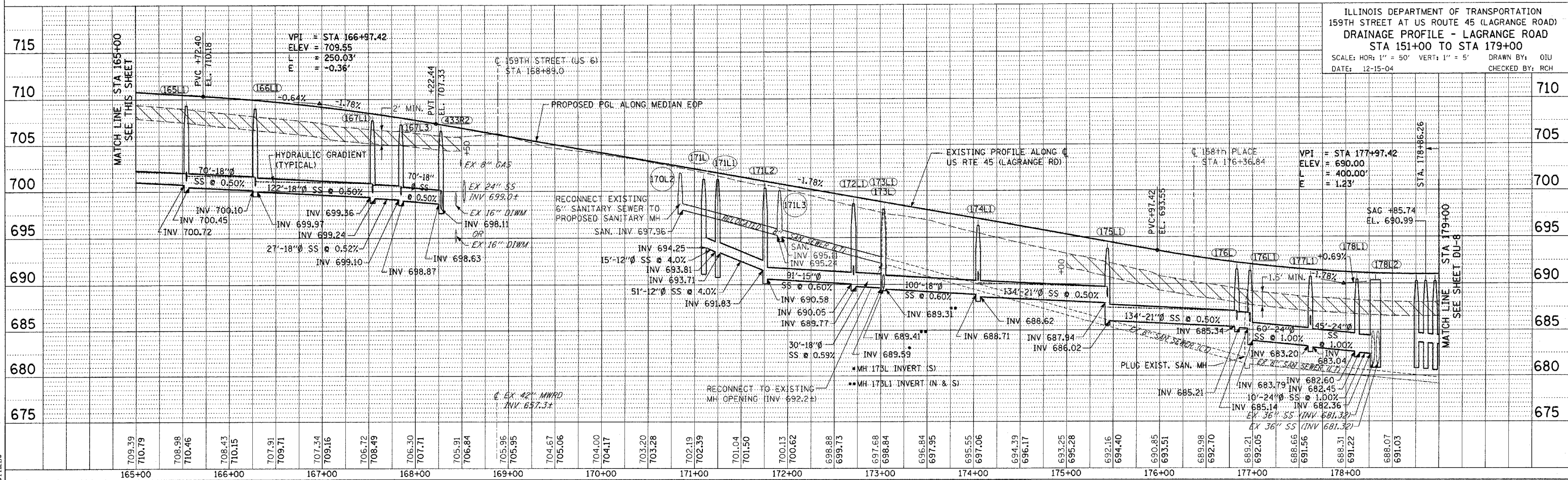


F.A. RTE	SECTION	COUNTY	TOTAL SHEETS	SHEET NO.
351	537 R-1	COOK	237	82
STA.		TO STA.		
FED. ROAD DIST. NO.		ILLINOIS	FED. AID PROJECT	



PLAN	SURVEYED	DATE
FILED	BY	
NOTE BOOK	NO. NOTED	
NO.	DATE	

PROFILE	SURVEYED	DATE
FILED	BY	
NOTE BOOK	NO. NOTED	
NO.	DATE	



ILLINOIS DEPARTMENT OF TRANSPORTATION
 159TH STREET AT US ROUTE 45 (LAGRANGE ROAD)
 DRAINAGE PROFILE - LAGRANGE ROAD
 STA 151+00 TO STA 179+00
 SCALE: HOR: 1" = 50' VERT: 1" = 5'
 DATE: 12-15-04
 DRAWN BY: OIU
 CHECKED BY: RCH

FILES
 SDATAS
 STIMES