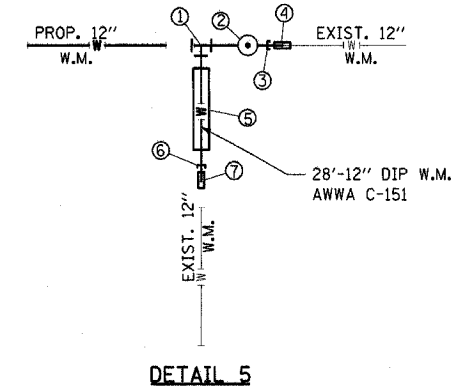


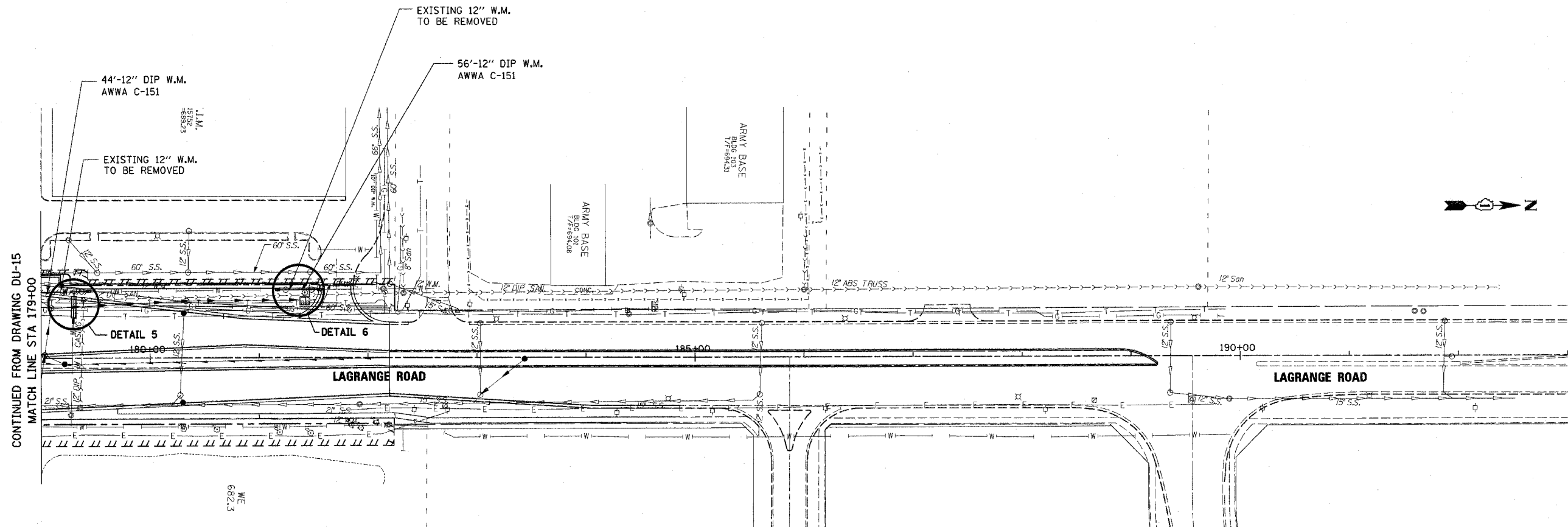
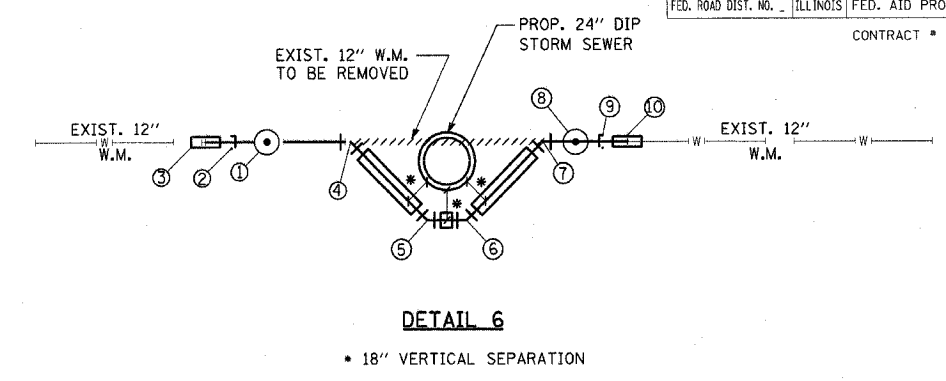
DETAIL 5 NOTES:

1. 12" x 12" x 12" TEE
STA. 179+26.95, 61.52' LT.
2. 12" GATE VALVE
(NON-PRESSURE CONNECTION)
WITH 5' Ø VAULT
STA. 179+37.32, 61.67' LT.
3. 12" TEMPORARY CAP TO BE INSTALLED
AFTER CUTTING THE EXISTING 12" W.M.
TEMPORARY CAP TO BE REMOVED AFTER
CHLORINATION & TIE INTO EXIST. 12"
W.M. WITH:
4. 12"-TRANSITION SLEEVE
STA. 179+43.81, 61.61' LT.
5. 4- 12" x 45° VERTICAL BENDS
20'-20" CASING PIPE. WM
CROSSING TYPE I, SEE SHEET
MD-1 FOR DETAILS.
6. 12" TEMPORARY CAP TO BE INSTALLED
AFTER CUTTING THE EXISTING 12" W.M.
TEMPORARY CAP TO BE REMOVED AFTER
CHLORINATION & TIE INTO EXIST. 12"
W.M. WITH:
7. 12"-TRANSITION SLEEVE
STA. 179+27.03, 34.11' LT.



DETAIL 6 NOTES:

1. 12" GATE VALVE
(NON-PRESSURE CONNECTION)
WITH 5' Ø VAULT
STA. 181+24.45, 63.32' LT.
2. 12" TEMPORARY CAP TO BE INSTALLED
AFTER CUTTING THE EXISTING 12" W.M.
TEMPORARY CAP TO BE REMOVED AFTER
CHLORINATION & TIE INTO EXIST. 12"
W.M. WITH:
3. 12"-TRANSITION SLEEVE
STA. 181+17.04, 63.26' LT.
4. 12" x 45° VERTICAL BEND
12'-20" CASING PIPE
5. 12" x 45° VERTICAL BEND
6'-20" CASING PIPE
6. 12" x 45° VERTICAL BEND
12'-20" CASING PIPE
7. 12" x 45° VERTICAL BEND
8. 12" GATE VALVE
(NON-PRESSURE CONNECTION)
WITH 5' Ø VAULT
STA. 181+48.23, 63.54' LT.
9. 12" TEMPORARY CAP TO BE INSTALLED
AFTER CUTTING THE EXISTING 12" W.M.
TEMPORARY CAP TO BE REMOVED AFTER
CHLORINATION & TIE INTO EXIST. 12"
W.M. WITH:
10. 12"-TRANSITION SLEEVE
STA. 181+55.46, 63.60' LT.



WATER MAIN LEGEND AND SYMBOLS

- [R] STRUCTURE REMOVAL
- [A] VALVE VAULT TO BE ADJUSTED
- [M] STRUCTURE TO BE REMOVED
- [AD] STRUCTURE TO BE ADJUSTED

REVISIONS	
NAME	DATE

ILLINOIS DEPARTMENT OF TRANSPORTATION
 US RTE 6 (159TH ST) AT US RTE 45 (LAGRANGE RD)
 LAGRANGE ROAD (US RTE 45)
 WATER MAIN PLAN
 STA 179+00 TO STA 182+19.46
 SCALE: 1"=50' DRAWN BY: JTF
 DATE: 7-07-06 CHECKED BY: OIU



FILES
 DATES
 TIMES