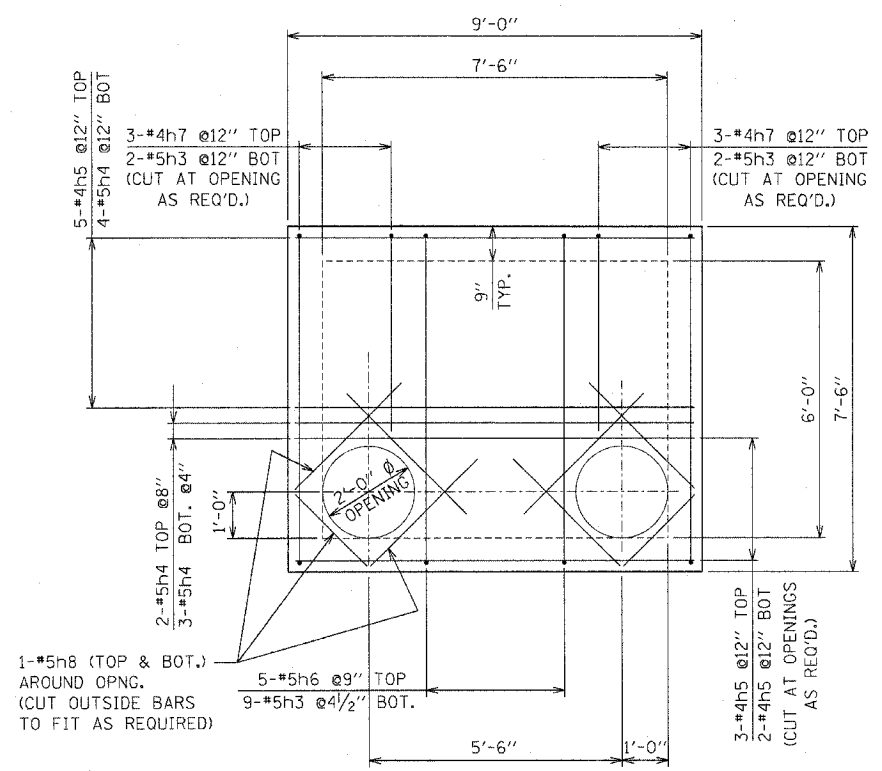


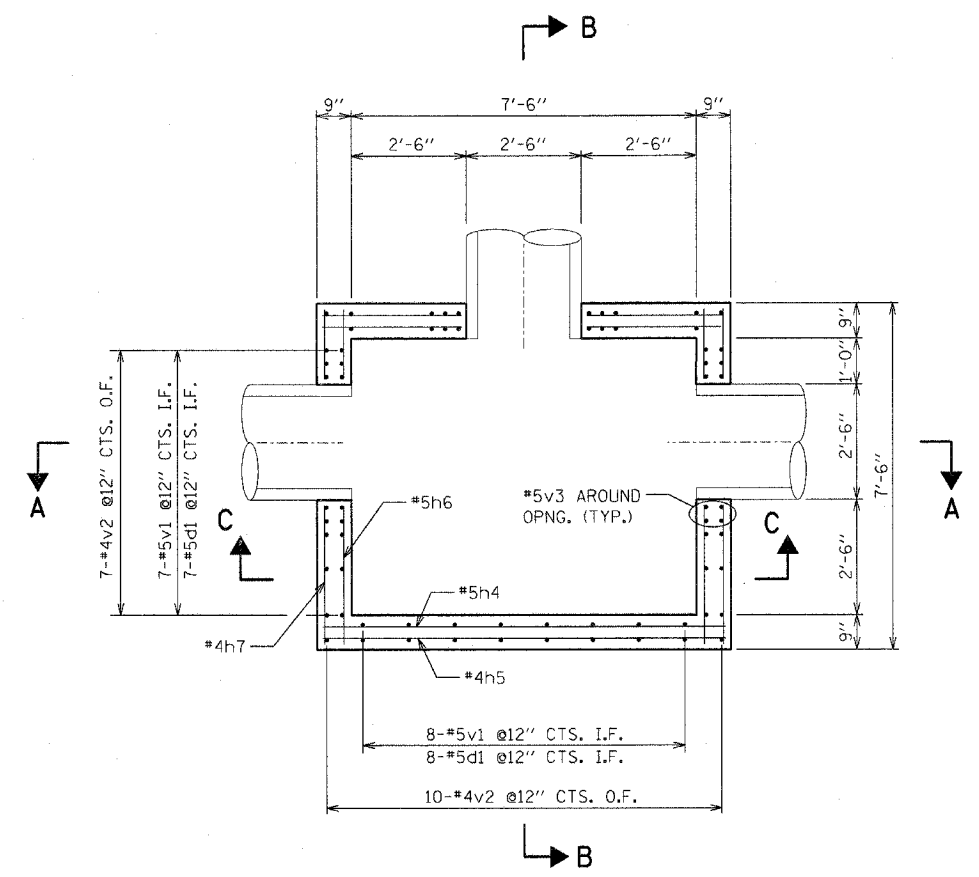
F.A.P. FILE	SECTION	COUNTY	TOTAL SHEETS	SHEET NO.
351	537 R-1	COOK	245	95
STA.	TO STA.			
FED. ROAD DIST. NO. ILLINOIS FED. AID PROJECT				
CONTRACT # 62880				

**BILL OF MATERIAL**

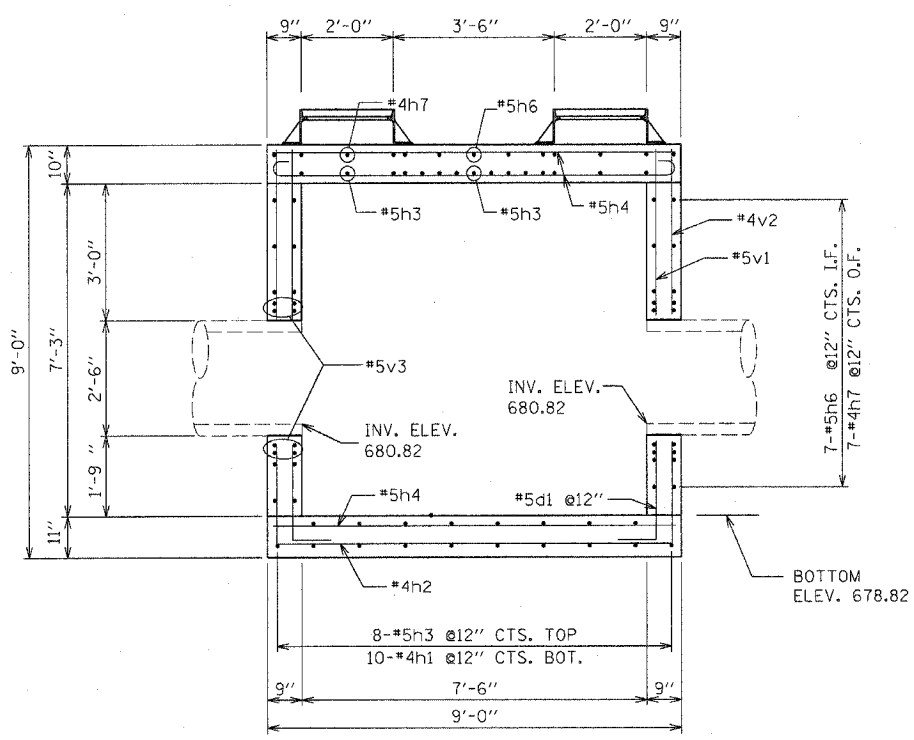
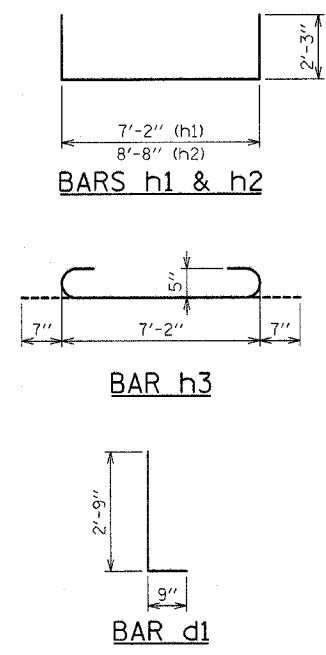
BAR	NO.	SIZE	LENGTH	SHAPE
h1(E)	10	#4	11'-8"	□
h2(E)	9	#4	13'-2"	□
h3(E)	21	#5	8'-4"	□
h4(E)	29	#5	8'-8"	□
h5(E)	25	#4	8'-8"	□
h6(E)	19	#5	7'-2"	□
h7(E)	20	#4	7'-2"	□
h8(E)	16	#5	5'-0"	□
d1(E)	30	#5	3'-6"	L
v1(E)	30	#5	7'-10"	□
v2(E)	34	#4	7'-10"	□
v3(E)	72	#5	4'-6"	□
CONCRETE STRUCTURES			CU. YD.	9.6
REINFORCEMENT BARS, EPOXY COATED			POUND	1,890



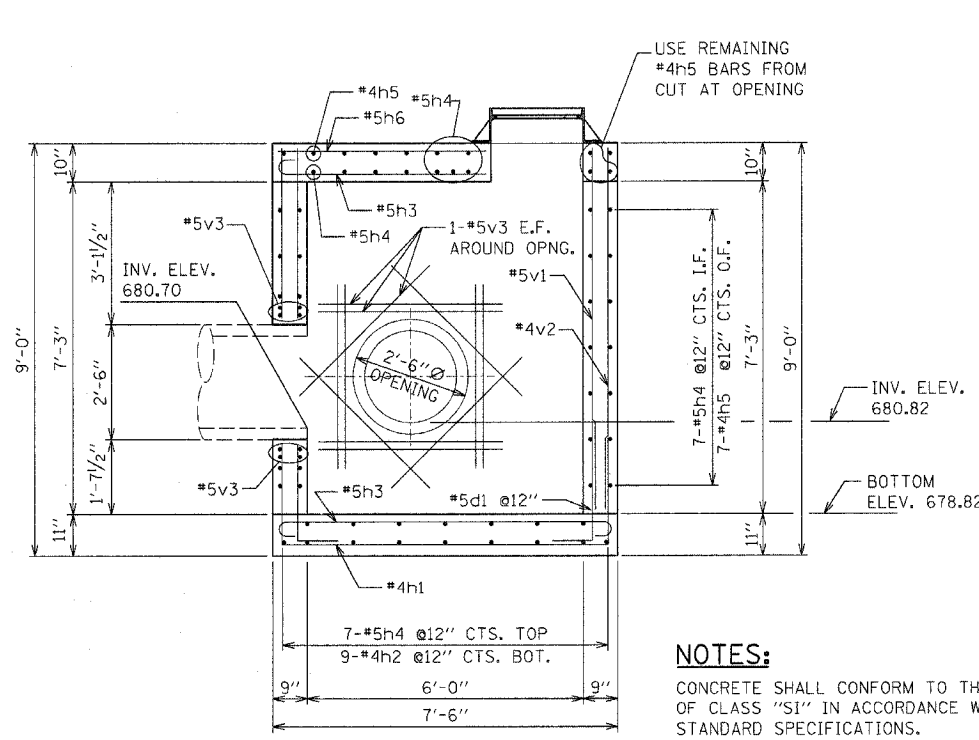
**TOP SLAB PLAN**  
SCALE: AS SHOWN



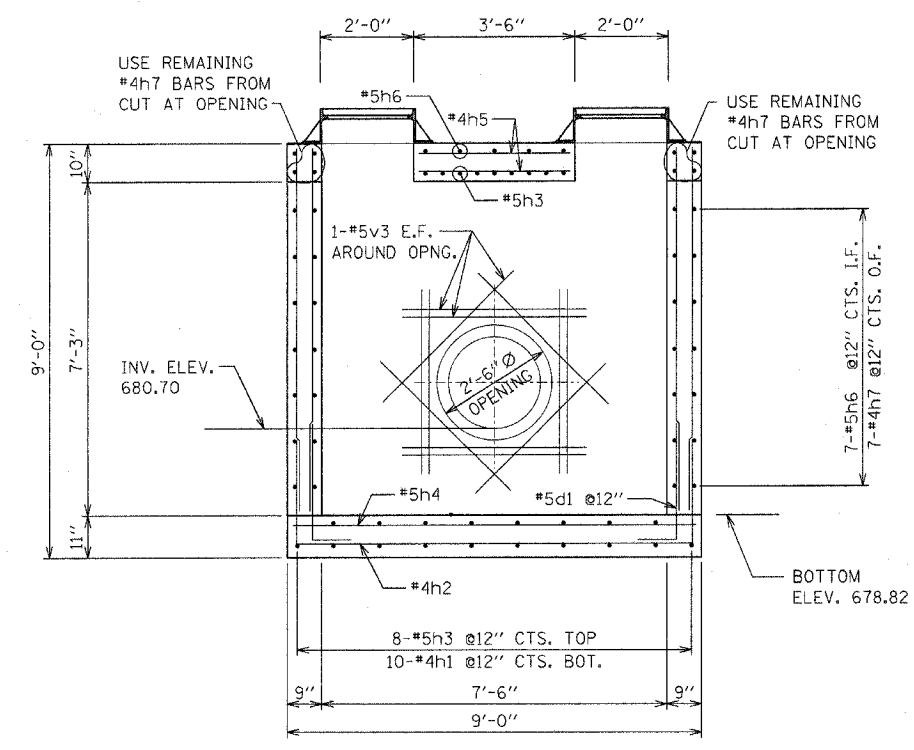
**PLAN**  
SCALE: AS SHOWN



**SECTION A-A**  
SCALE: AS SHOWN



**SECTION B-B**  
SCALE: AS SHOWN



**SECTION C-C**  
SCALE: AS SHOWN

**NOTES:**

CONCRETE SHALL CONFORM TO THE REQUIREMENTS OF CLASS "SI" IN ACCORDANCE WITH THE STANDARD SPECIFICATIONS.  
REINFORCEMENT BARS SHALL BE EPOXY COATED AND CONFORM TO THE REQUIREMENTS OF ASTM-A615, GRADE 60.

REVISIONS	
NAME	DATE

ILLINOIS DEPARTMENT OF TRANSPORTATION  
US RTE 6 (159TH ST) AT US RTE 45 (LAGRANGE RD)  
**JUNCTION CHAMBER NO.2**  
**STRUCTURE NO. 181L1**  
**REINFORCEMENT DETAILS**  
SCALE: 1/2" = 1'-0"  
DATE: 7-07-06  
DRAWN BY: KWT  
CHECKED BY: AW

**McDonough Associates Inc.**  
Engineers / Architects