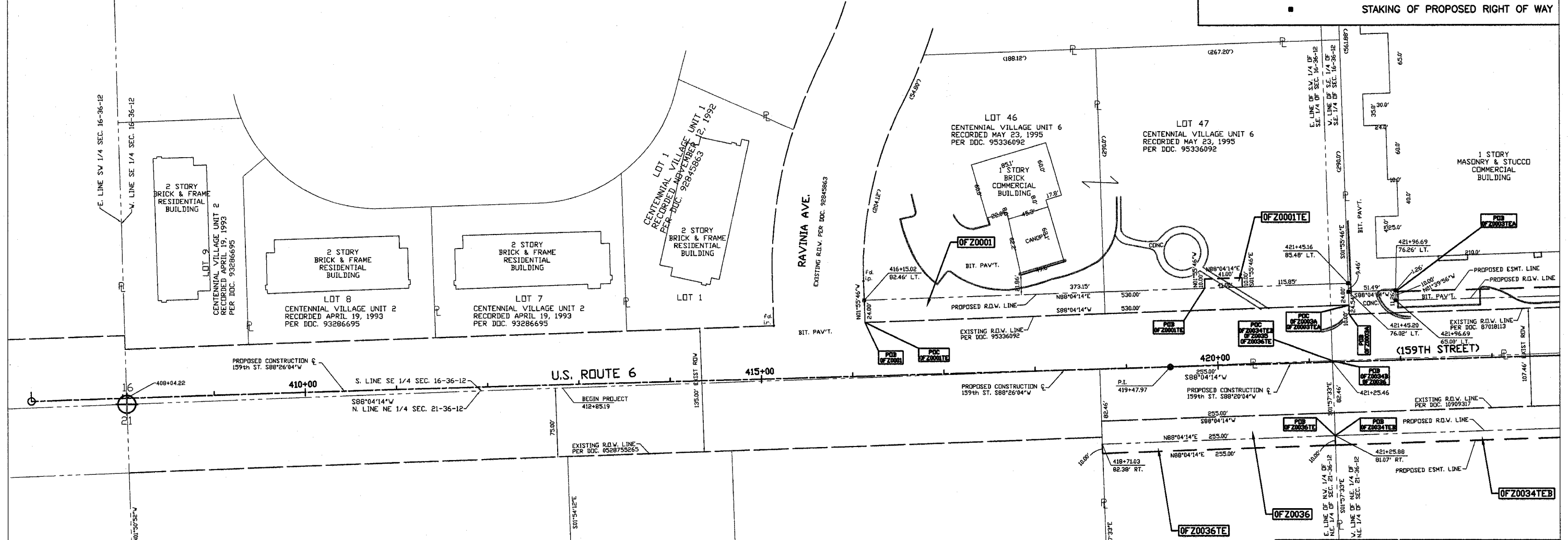
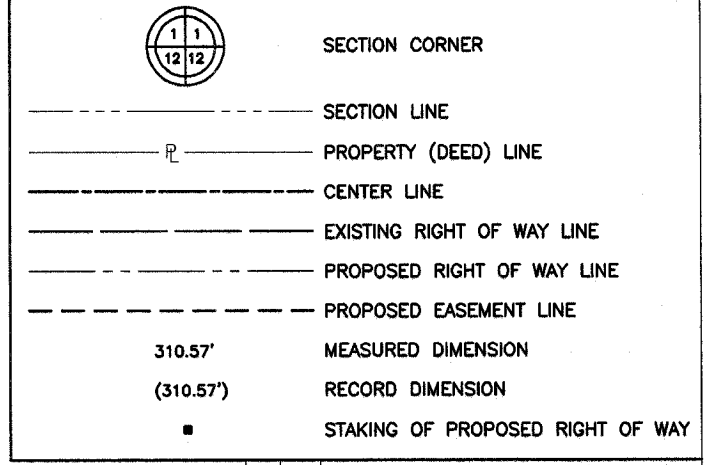


PARCEL #	OWNER	P.I.N.	TOTAL HOLDING AREA	AREA TAKEN	PREVIOUSLY DEDICATED OR USED AREA	REMAINDER	AREA OF EASEMENT	PURPOSE OF EASEMENT	ACQUIRED BY
OFZ0001	CENTRAL CREDIT UNION OF ILLINOIS	27-16-408-001& 27-16-408-002	3.383 ACRES	0.292 ACRES	0 ACRES	3.091 ACRES	0.009 ACRES	TEMP. CONST.	
OFZ0003	SIMON PROPERTY GROUP (ILLINOIS), L.P. (ALSO SEE SHEET 4&6)	27-16-403-007& 27-16-403-008	38.124 ACRES	3A=0.268 ACRES 3B=0.509 ACRES	0 ACRES	37.347 ACRES	3TEA=0.295 ACRES 3TEB=0.417 ACRES	TEMP. CONST.	
OFZ0036	JOHN CHERMAK AND MARJORIE CHERMAK	27-21-200-006	9.659 ACRES	0.483 ACRES	0.336 ACRES	9.177 ACRES	0.059 ACRES	TEMP. CONST.	

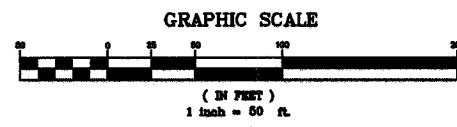


FOR INFORMATION ONLY

W.C. DOLAND ENGINEERING, INC.
509 E. DUNDEE ROAD
PALATINE, IL 60074
(847)991-5088
(847)934-3427 FAX

THIS IS TO CERTIFY THAT I, JASON R. DOLAND, AN ILLINOIS REGISTERED LAND SURVEYOR, HAVE SURVEYED THE PLAT OF HIGHWAYS SHOWN HEREON IN SECTIONS 16, 18, 21 AND 22, TOWNSHIP 36 NORTH, RANGE 12 EAST OF THE THIRD PRINCIPAL MERIDIAN, COOK COUNTY, ILLINOIS; THAT THE SURVEY IS TRUE AND COMPLETE AS SHOWN TO THE BEST OF MY KNOWLEDGE AND BELIEF; THAT THE PLAT CORRECTLY REPRESENTS SAID SURVEY, THAT ALL MONUMENTS FOUND AND ESTABLISHED ARE OF PERMANENT QUALITY AND OCCUPY THE POSITIONS SHOWN THEREON AND THAT THE MONUMENTS ARE SUFFICIENT TO ENABLE THE SURVEY TO BE RETRACED.

MADE FOR THE ILLINOIS DEPARTMENT OF TRANSPORTATION.
DATE THIS ____ DAY OF _____, 20__ A.D.
ILLINOIS REGISTERED LAND SURVEYOR No. 036-003644



McDONOUGH ASSOCIATES, INC.
130 EAST RANDOLPH STREET
SUITE 1000
CHICAGO, IL 60601-8214

BEARINGS AND COORDINATES ARE REFERENCED TO THE ILLINOIS STATE PLANE COORDINATE SYSTEM, EAST ZONE, NAD 1983, AS PROVIDED BY THE ILLINOIS DEPARTMENT OF TRANSPORTATION.

PLAT OF HIGHWAYS
STATE OF ILLINOIS
DEPARTMENT OF TRANSPORTATION

F.A.P. 351 / U.S. 6 U.S. ROUTE 45 / 159th STREET
SECTION: L.A.C. COUNTY: COOK

PROJECT: ROUTE 45 RECONSTRUCTION
JOB No.: R-90-003-05
STATION 412+85.19 TO STATION 421+45.20
SCALE: 1"=50'

SHEET 5 OF 7

BUREAU OF LAND ACQUISITION
201 WEST CENTER COURT
SCHAUMBURG, IL 60196

SEE SHEET 6