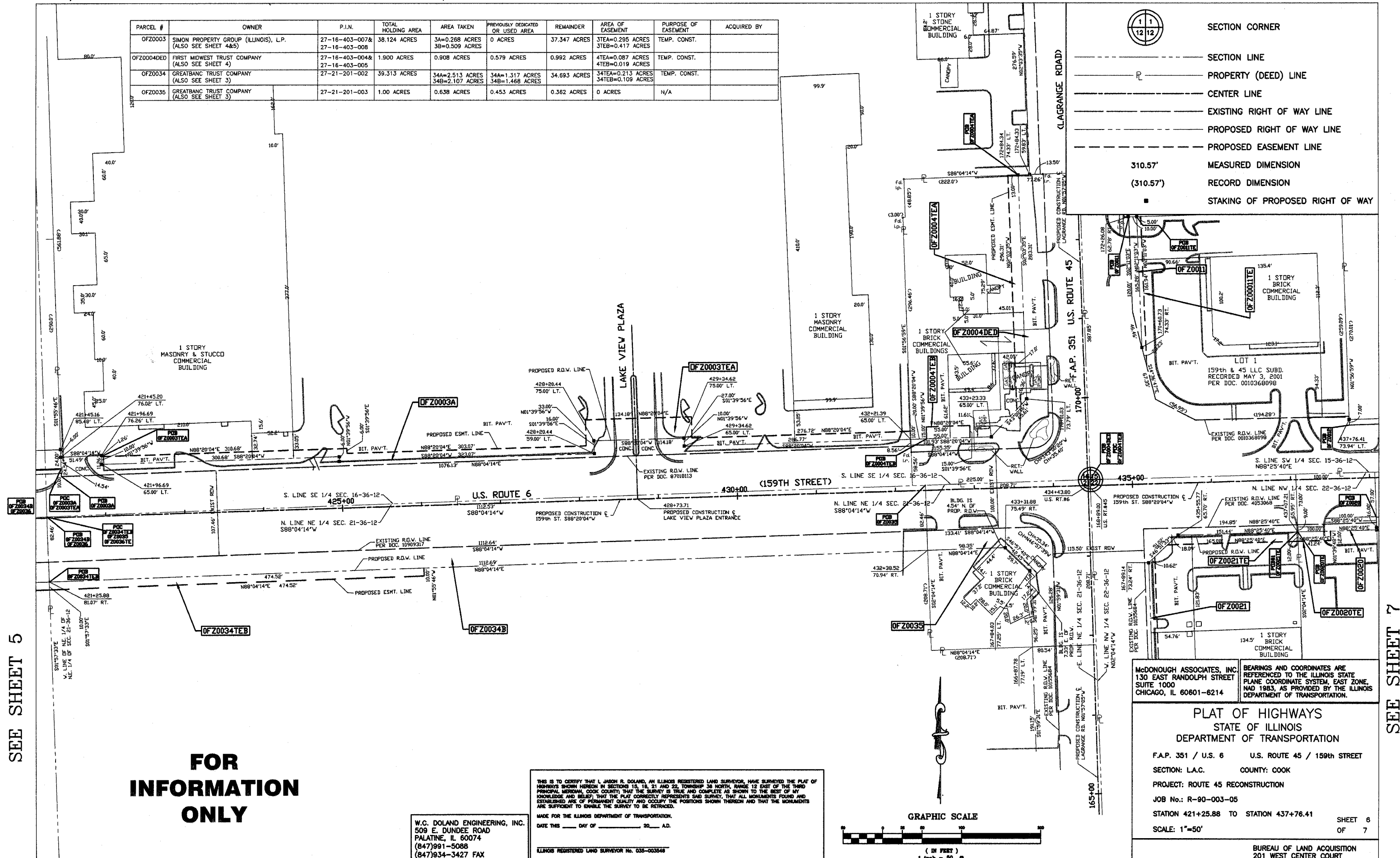
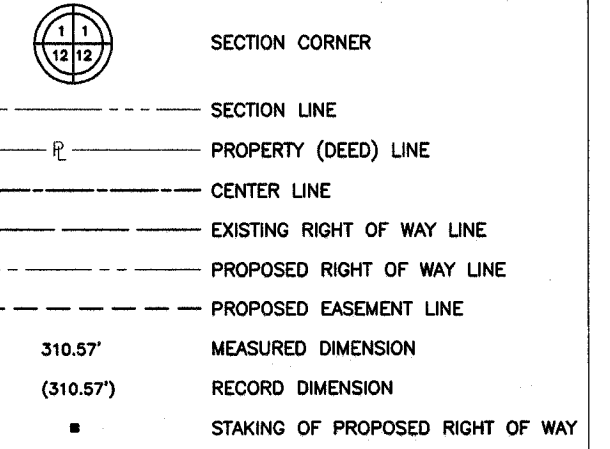


PARCEL #	OWNER	P.I.N.	TOTAL HOLDING AREA	AREA TAKEN	PREVIOUSLY DEDICATED OR USED AREA	REMAINDER	AREA OF EASEMENT	PURPOSE OF EASEMENT	ACQUIRED BY
OFZ0003	SIMON PROPERTY GROUP (ILLINOIS), L.P. (ALSO SEE SHEET 4&5)	27-16-403-007& 27-16-403-008	38.124 ACRES	3A=0.268 ACRES 3B=0.509 ACRES	0 ACRES	37.347 ACRES	3TEA=0.295 ACRES 3TEB=0.417 ACRES	TEMP. CONST.	
OFZ0004DE	FIRST MIDWEST TRUST COMPANY (ALSO SEE SHEET 4)	27-16-403-004& 27-16-403-005	1.900 ACRES	0.908 ACRES	0.579 ACRES	0.992 ACRES	4TEA=0.087 ACRES 4TEB=0.019 ACRES	TEMP. CONST.	
OFZ0034	GREATBANC TRUST COMPANY (ALSO SEE SHEET 3)	27-21-201-002	39.313 ACRES	34A=2.513 ACRES 34B=2.107 ACRES	34A=1.317 ACRES 34B=1.468 ACRES	34.693 ACRES	34TEA=0.213 ACRES 34TEB=0.109 ACRES	TEMP. CONST.	
OFZ0035	GREATBANC TRUST COMPANY (ALSO SEE SHEET 3)	27-21-201-003	1.00 ACRES	0.638 ACRES	0.453 ACRES	0.362 ACRES	0 ACRES	N/A	



SEE SHEET 5

SEE SHEET 7

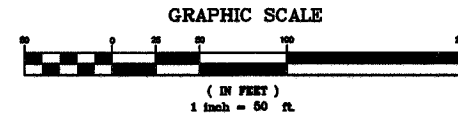
FOR INFORMATION ONLY

W.C. DOLAND ENGINEERING, INC.
509 E. DUNDEE ROAD
PALATINE, IL 60074
(847)991-5088
(847)934-3427 FAX

THIS IS TO CERTIFY THAT I, JASON R. DOLAND, AN ILLINOIS REGISTERED LAND SURVEYOR, HAVE SURVEYED THE PLAT OF HIGHWAYS SHOWN HEREON IN SECTIONS 15, 16, 21 AND 22, TOWNSHIP 36 NORTH, RANGE 12 EAST OF THE THIRD PRINCIPAL MERIDIAN, COOK COUNTY, THAT THE SURVEY IS TRUE AND COMPLETE AS SHOWN TO THE BEST OF MY KNOWLEDGE AND BELIEF; THAT THE PLAT CORRECTLY REPRESENTS SAID SURVEY, THAT ALL MONUMENTS FOUND AND ESTABLISHED ARE OF PERMANENT QUALITY AND OCCUPY THE POSITIONS SHOWN THEREON AND THAT THE MONUMENTS ARE SUFFICIENT TO ENABLE THE SURVEY TO BE RE-TRACED.

MADE FOR THE ILLINOIS DEPARTMENT OF TRANSPORTATION.
DATE THIS ____ DAY OF _____ 20__ A.D.

ILLINOIS REGISTERED LAND SURVEYOR No. 036-003848



McDONOUGH ASSOCIATES, INC.
130 EAST RANDOLPH STREET
SUITE 1000
CHICAGO, IL 60601-6214

BEARINGS AND COORDINATES ARE REFERENCED TO THE ILLINOIS STATE PLANE COORDINATE SYSTEM, EAST ZONE, NAD 1983, AS PROVIDED BY THE ILLINOIS DEPARTMENT OF TRANSPORTATION.

PLAT OF HIGHWAYS
STATE OF ILLINOIS
DEPARTMENT OF TRANSPORTATION

F.A.P. 351 / U.S. 6 U.S. ROUTE 45 / 159th STREET
SECTION: L.A.C. COUNTY: COOK
PROJECT: ROUTE 45 RECONSTRUCTION
JOB No.: R-90-003-05
STATION 421+25.88 TO STATION 437+76.41
SCALE: 1"=50'

SHEET 6 OF 7

BUREAU OF LAND ACQUISITION
201 WEST CENTER COURT
SCHAUMBURG, IL 60196