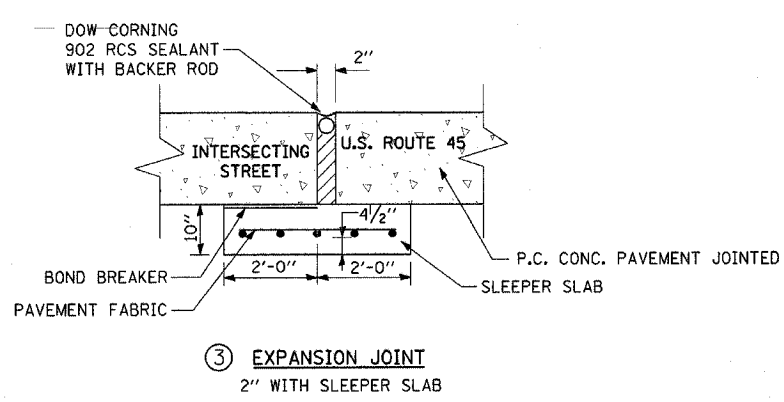
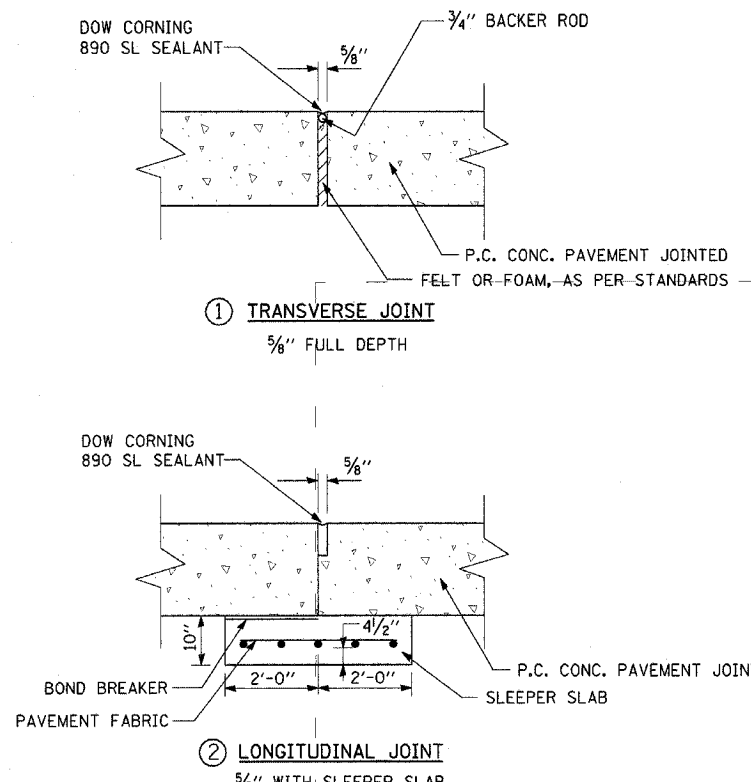
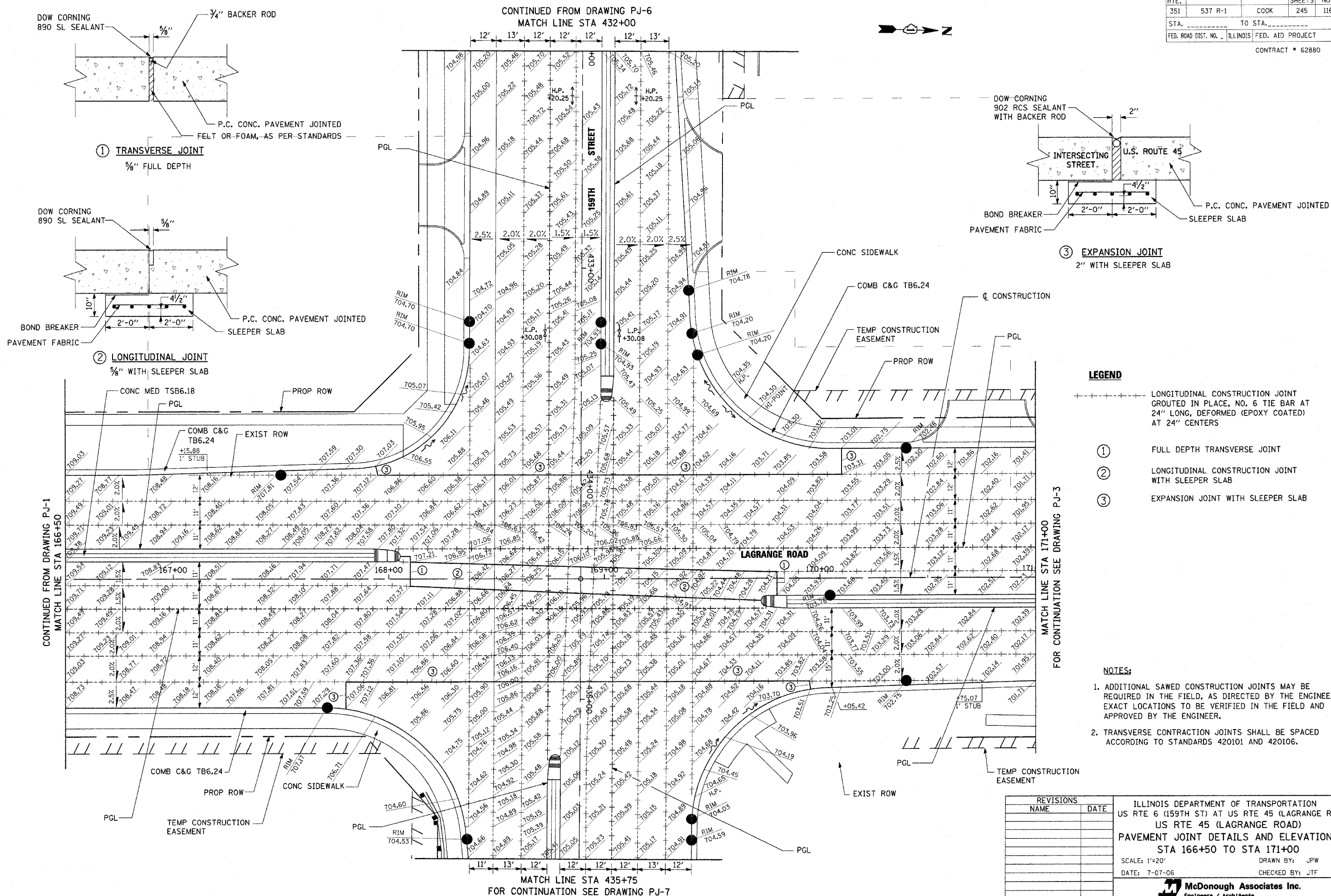


F.A.P. RTE.	SECTION	COUNTY	TOTAL SHEETS	SHEET NO.
351	537 R-1	COOK	245	116

STA. _____ TO STA. _____
 FED. ROAD DIST. NO. _____ ILLINOIS FED. AID PROJECT

CONTRACT # 62880



- LEGEND**
- LONGITUDINAL CONSTRUCTION JOINT GROUTED IN PLACE, NO. 6 TIE BAR AT 24\"/>
 - ① FULL DEPTH TRANSVERSE JOINT
 - ② LONGITUDINAL CONSTRUCTION JOINT WITH SLEEPER SLAB
 - ③ EXPANSION JOINT WITH SLEEPER SLAB

- NOTES:**
1. ADDITIONAL SAWED CONSTRUCTION JOINTS MAY BE REQUIRED IN THE FIELD, AS DIRECTED BY THE ENGINEER. EXACT LOCATIONS TO BE VERIFIED IN THE FIELD AND APPROVED BY THE ENGINEER.
 2. TRANSVERSE CONTRACTION JOINTS SHALL BE SPACED ACCORDING TO STANDARDS 420101 AND 420106.

REVISIONS	
NAME	DATE

ILLINOIS DEPARTMENT OF TRANSPORTATION
 US RTE 6 (159TH ST) AT US RTE 45 (LAGRANGE RD)
 US RTE 45 (LAGRANGE ROAD)
 PAVEMENT JOINT DETAILS AND ELEVATIONS
 STA 166+50 TO STA 171+00
 SCALE: 1"=20' DRAWN BY: JPW
 DATE: 7-07-06 CHECKED BY: JTF

McDonough Associates Inc.
 Engineers / Architects

I:\Dm\p101002.sht
 8/7/2009 3:00 PM
 5:16:55 PM