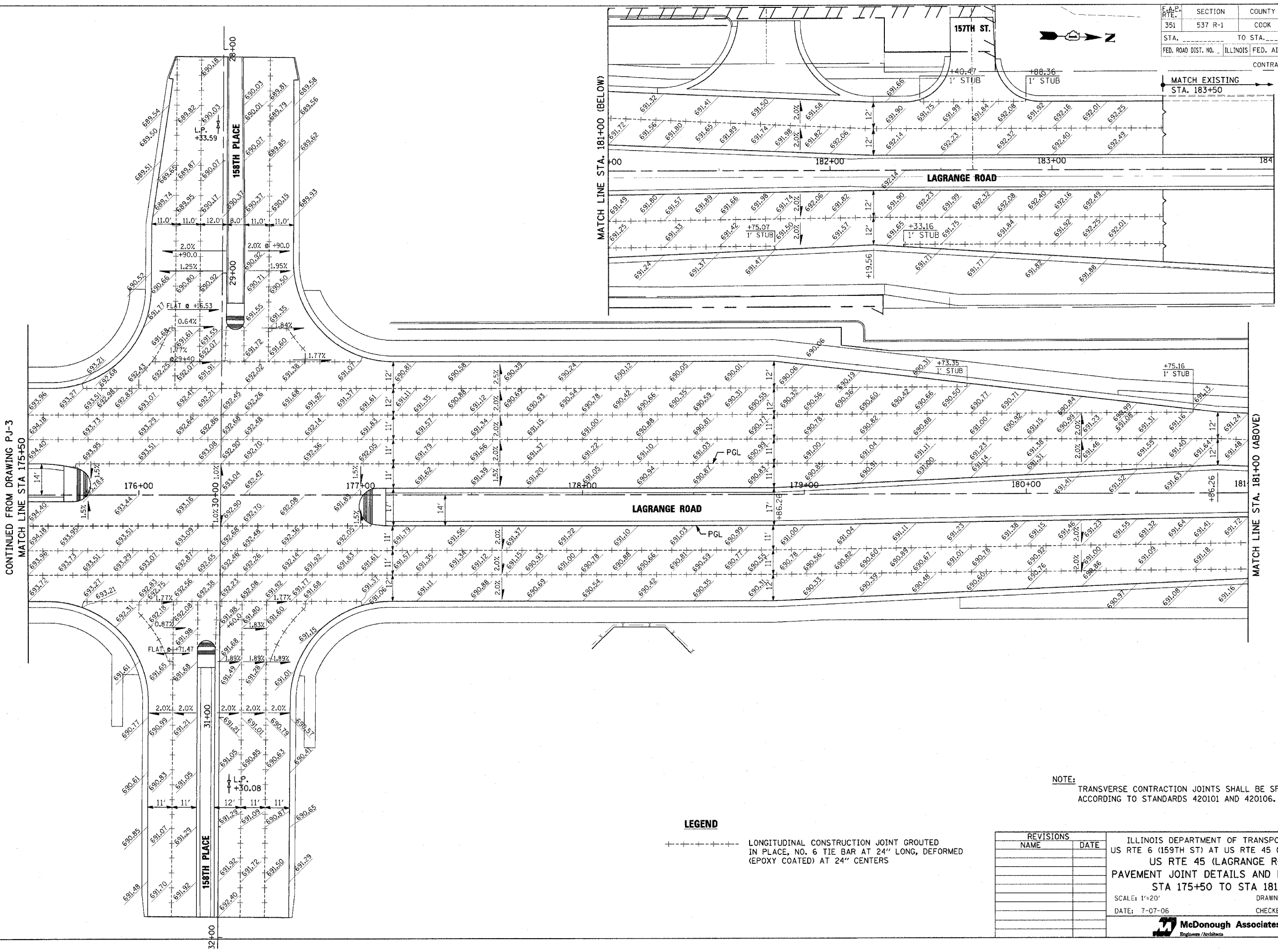


F.A.P. RTE. 351	SECTION 537 R-1	COUNTY COOK	TOTAL SHEETS 245	SHEET NO. 118
STA. _____		TO STA. _____		
FED. ROAD DIST. NO. _____		ILLINOIS FED. AID PROJECT		CONTRACT # 62880



CONTINUED FROM DRAWING PJ-3  
MATCH LINE STA 175+50

MATCH LINE STA. 181+00 (ABOVE)

NOTE: TRANSVERSE CONTRACTION JOINTS SHALL BE SPACED ACCORDING TO STANDARDS 420101 AND 420106.

**LEGEND**  
 +-----+ LONGITUDINAL CONSTRUCTION JOINT GROUTED IN PLACE, NO. 6 TIE BAR AT 24" LONG, DEFORMED (EPOXY COATED) AT 24" CENTERS

REVISIONS		ILLINOIS DEPARTMENT OF TRANSPORTATION US RTE 6 (159TH ST) AT US RTE 45 (LAGRANGE RD) US RTE 45 (LAGRANGE ROAD) PAVEMENT JOINT DETAILS AND ELEVATIONS STA 175+50 TO STA 181+00 SCALE: 1"=20' DATE: 7-07-06	DRAWN BY: JPW CHECKED BY: JTF
NAME	DATE		

**McDonough Associates Inc.**  
Engineers / Architects

I:\Dem\p101004.sht  
8/7/2006 2:33:48 PM  
2:33:48 PM