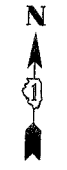


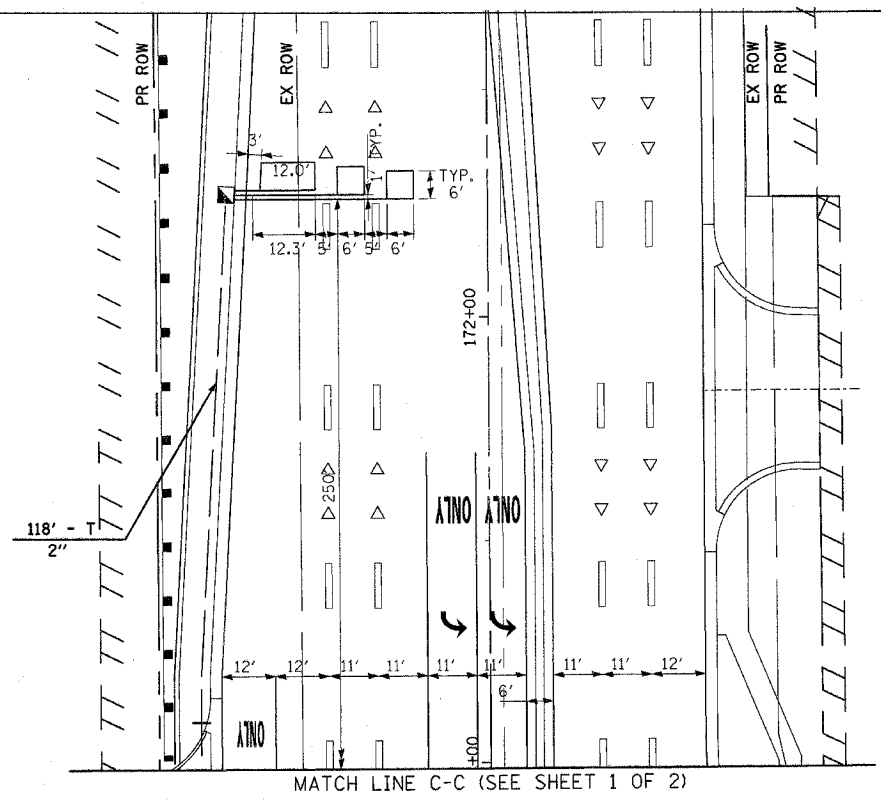
STATE	SECTION	COUNTY	TOTAL SHEETS	SHEET NO.
351	537 R-1	COOK	245	140
STA. _____		TO STA. _____		
FED. ROAD DIST. NO. _____		ILLINOIS FED. AID PROJECT		

CONTRACT # 62880

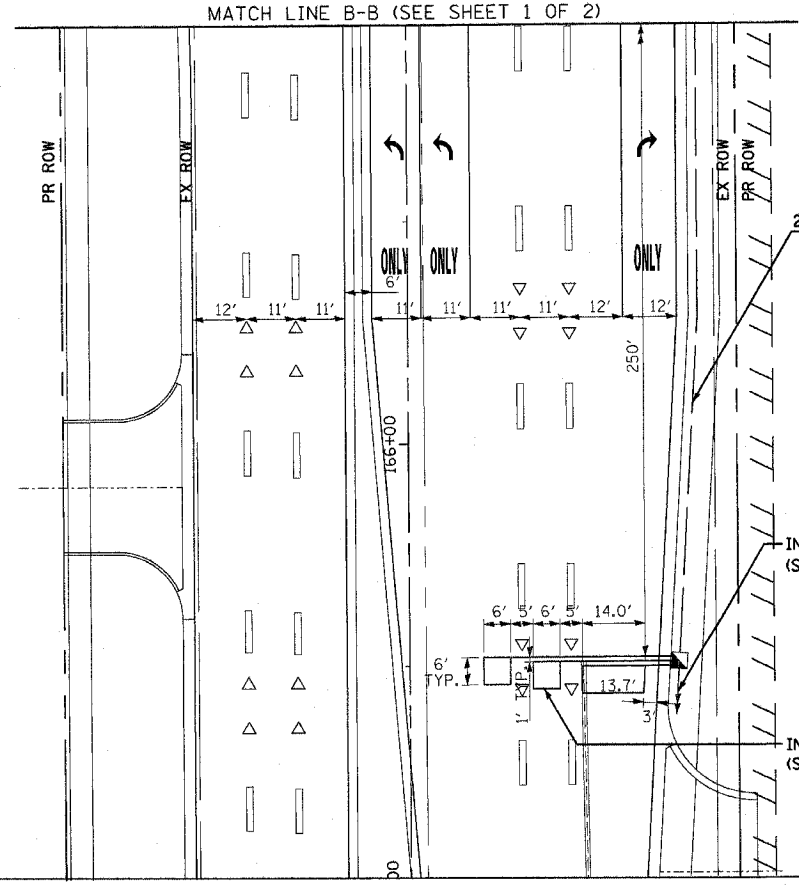


TRAFFIC SIGNAL LEGEND

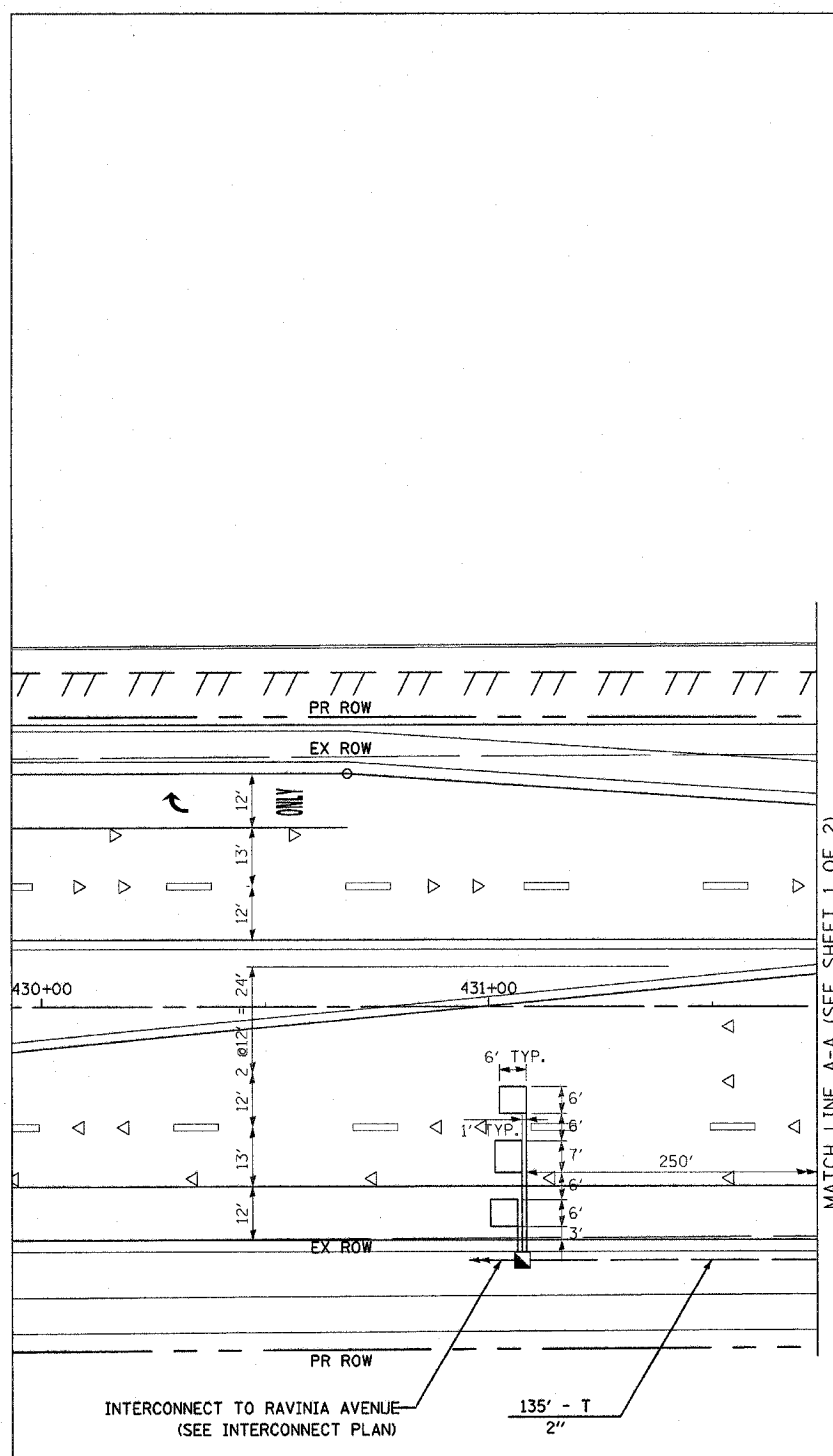
- |  |          |          |
|--|----------|----------|
| CONTROLLER   | PROPOSED | EXISTING |
| SERVICE INSTALLATION   |          |          |
| SIGNAL HEAD  |          |          |
| SIGNAL HEAD WITH BACKPLATE                                   |          |          |
| SIGNAL HEAD, PEDESTRIAN                                      |          |          |
| SIGNAL POST  |          |          |
| MAST ARM ASSEMBLY AND POLE, STEEL                            |          |          |
| MAST ARM ASSEMBLY AND POLE, ALUMINUM                         |          |          |
| COMBINATION MAST ARM ASSEMBLY AND POLE, STEEL WITH LUMINAIRE |          |          |
| UNIT DUCT  |          |          |
| COMMON TRENCH  |          |          |
| HANDHOLE   |          |          |
| HEAVY DUTY HANDHOLE  |          |          |
| DOUBLE HANDHOLE  |          |          |
| G.S. CONDUIT IN TRENCH (T) OR PUSHED (P)                     |          |          |
| PEDESTRIAN PUSH BUTTON DETECTOR                              |          |          |
| DETECTOR LOOP  |          |          |
| CAST IRON JUNCTION BOX                                       |          |          |
| EMERGENCY VEHICLE LIGHT DETECTOR                             |          |          |
| CONFIRMATION BEACON  |          |          |
| SIGNAL HEAD OPTICALLY PROGRAMMED                             |          |          |
| CONDUIT SPLICE   |          |          |
| WOOD POLE  |          |          |
| RACEWAY FOR MAGNETIC DETECTOR, TYPE I OR TYPE II             |          |          |
| VEHICLE DETECTOR, NON COMPENSATED MAGNETIC TYPE              |          |          |
| RAILROAD CONTROL CABINET                                     |          |          |
| TELEPHONE CONNECTION   |          |          |
| ILLUMINATED SIGN   |          |          |
| "NO LEFT TURN"   |          |          |
| ILLUMINATED SIGN   |          |          |
| "NO RIGHT TURN"  |          |          |



MATCH LINE C-C (SEE SHEET 1 OF 2)



MATCH LINE B-B (SEE SHEET 1 OF 2)



MATCH LINE A-A (SEE SHEET 1 OF 2)

TRAFFIC SIGNAL NOTES:

1. ALL TRAFFIC SIGNAL HEADS SHALL BE L.E.D. (LIGHT EMITTING DIODE)
2. THE EXACT LOCATION OF ALL UTILITIES SHALL BE FIELD VERIFIED BY THE CONTRACTOR BEFORE THE INSTALLATION OF ANY COMPONENTS OF THE TRAFFIC SIGNAL SYSTEM. FOR LOCATION OF UTILITIES, CALL J.U.L.I.E. AT 1-800-892-0123.
3. ALL SIGNAL POSTS AND MAST ARM POLES SHALL BE LOCATED A MINIMUM OF FOUR (4) AND SIX (6) FEET, RESPECTIVELY, FROM THE BACK OF CURB UNLESS OTHERWISE NOTED OR DIMENSIONED IN THE PLANS.
4. ALL DETECTOR LOOPS SHALL BE PREFORMED UNLESS OTHERWISE NOTED.

INTERCONNECT TO RAVINIA AVENUE  
(SEE INTERCONNECT PLAN)

INTERCONNECT TO 163RD STREET  
(SEE INTERCONNECT PLAN)

INTERSECTION AND SAMPLING  
(SYSTEM) DETECTORS (3)

REVISIONS	
NAME	DATE

ILLINOIS DEPARTMENT OF TRANSPORTATION  
US RTE 6 (159TH ST) AT US RTE 45 (LAGRANGE RD)  
US 45 AND 159TH STREET  
AND US 6 (159TH STREET)  
TRAFFIC SIGNAL PLAN - SHEET 2 OF 2  
SCALE: 1"=20'  
DATE: 7-07-06  
DRAWN BY: MJT  
DESIGNED BY: MJT  
CHECKED BY: NKU

