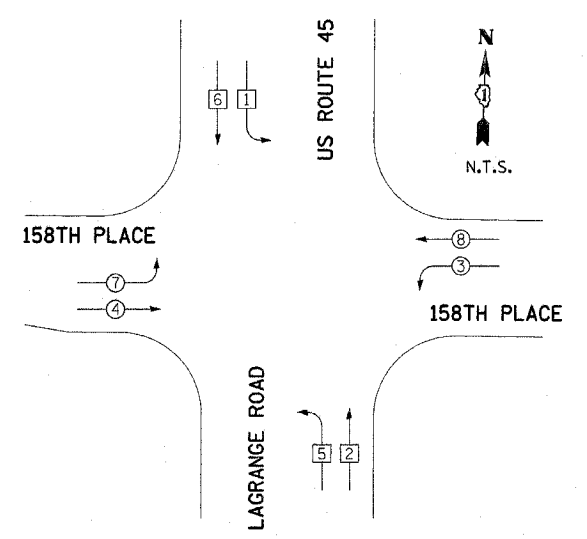
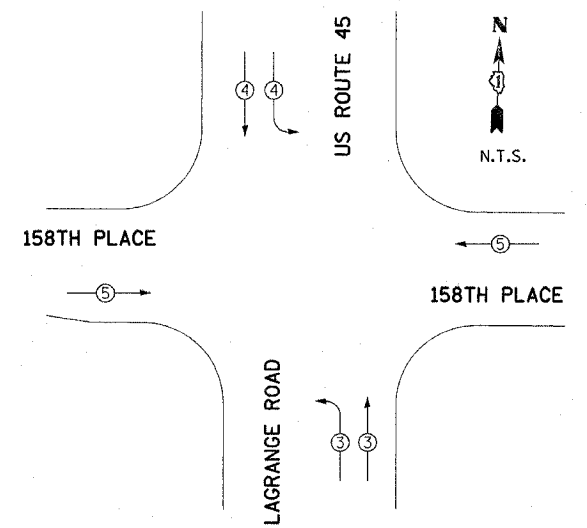


| | | | | |
|--------------------------|---------|---|--------------|-----------|
| E.A.P. RTE. | SECTION | COUNTY | TOTAL SHEETS | SHEET NO. |
| 351 | 537 R-1 | COOK | 245 | 144 |
| STA. _____ TO STA. _____ | | FED. ROAD DIST. NO. _____ ILLINOIS FED. AID PROJECT | | |
| CONTRACT # 62880 | | | | |



TEMPORARY PHASE DESIGNATION DIAGRAM

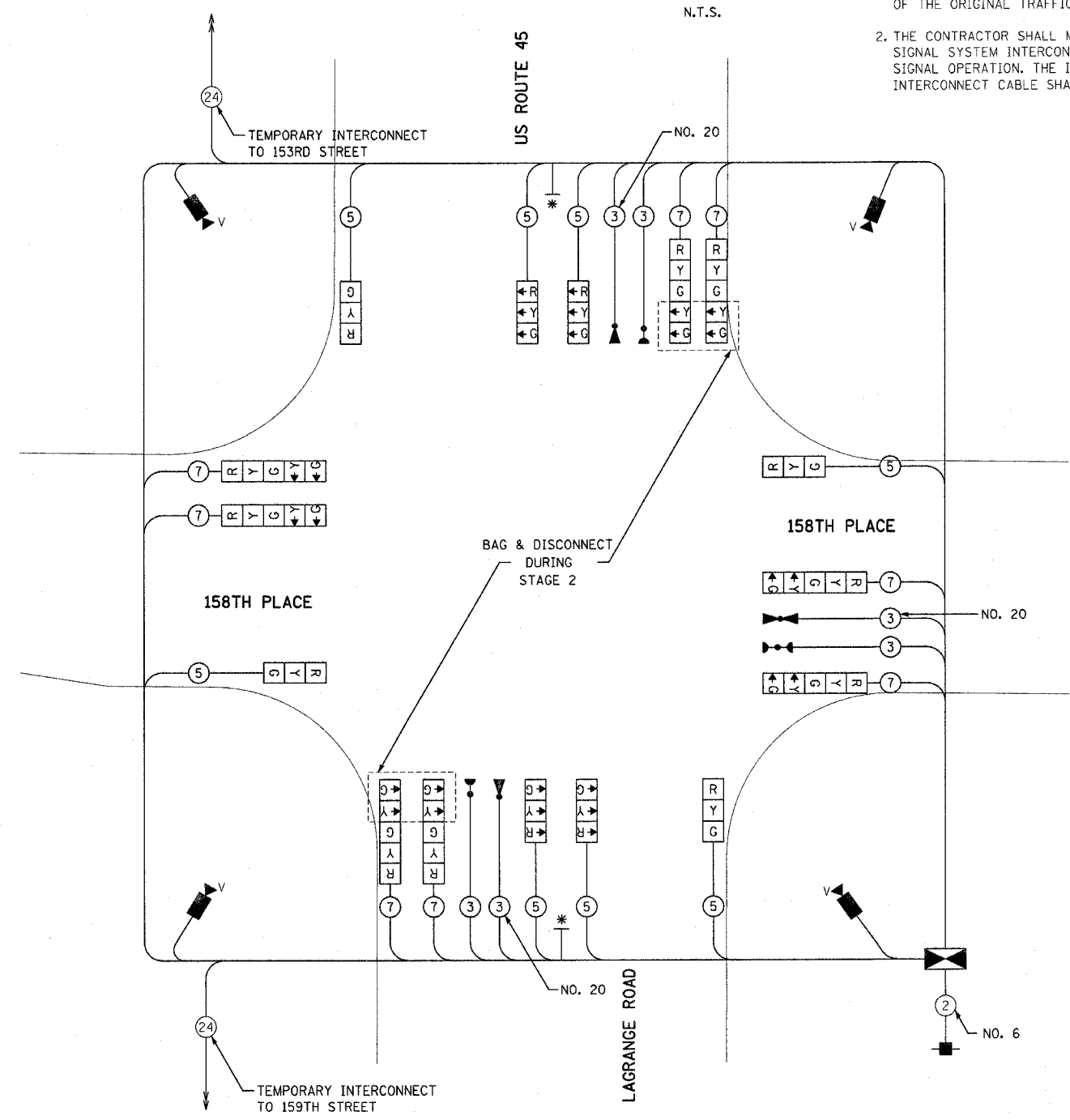
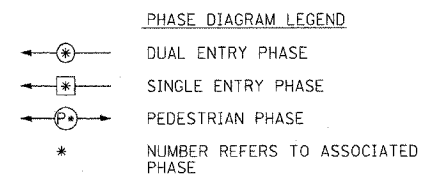
| PROPOSED EMERGENCY VEHICLE PREEMPTORS | | |
|---------------------------------------|---|---|
| EMERGENCY VEHICLE PREEMPTORS | 3 | 4 |
| MOVEMENT | | |



TEMPORARY EMERGENCY VEHICLE PREEMPTION DIAGRAM

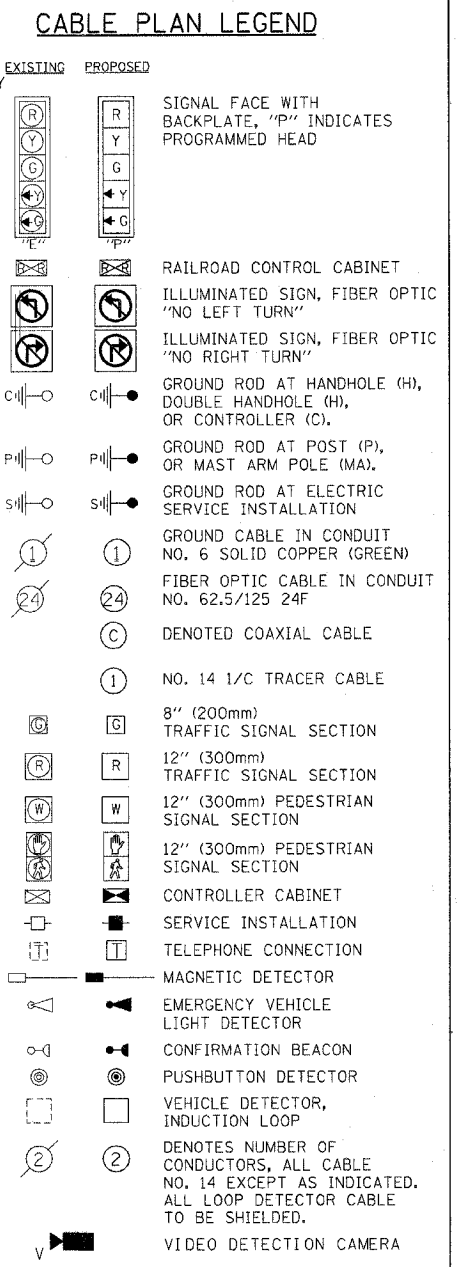
| I.D.O.T. TRAFFIC SIGNAL INSTALLATION ELECTRICAL SERVICE REQUIREMENTS | | | | | TOTAL WATTAGE |
|--|--------------|---------|---------|---------|---------------|
| TYPE | NO. OF LAMPS | WATTAGE | INCAND. | LED | |
| SIGNAL (RED) | 16 | 135 | 17 | 0.50 | 1080.0 |
| (YELLOW) | 16 | 135 | 25 | 0.25 | 540.0 |
| (GREEN) | 16 | 135 | 15 | 0.25 | 540.0 |
| ARROW | 8 | 135 | 12 | 0.10 | 108.0 |
| PED. SIGNAL | 0 | 90 | 25 | 1.00 | 0.0 |
| CONTROLLER | 1 | 100 | 100 | 1.00 | 100.0 |
| ILLUM. SIGN | 0 | 84 | 35 | 0.05 | 0.0 |
| FLASHER | 0 | | 25 | 0.50 | 0.0 |
| ENERGY COST TO: | | | | TOTAL = | 2368.0 |

ILLINOIS DEPARTMENT OF TRANSPORTATION
 201 WEST CENTER COURT
 SCHAUMBURG, ILLINOIS 60196-1096
 ENERGY SUPPLY: CONTACT: NILES K. AKBAR
 PHONE: (708) 235-2338
 COMPANY: COMMONWEALTH EDISON



TEMPORARY CABLE PLAN

- CONSTRUCTION NOTES**
- THE EXISTING TRAFFIC RESPONSIVE CLOSED LOOP SYSTEM OPERATION SHALL BE MAINTAINED DURING CONSTRUCTION. THE CONTRACTOR SHALL CONTACT THE COUNTY SIGNAL SYSTEM ENGINEER AT LEAST 72 HOURS PRIOR TO THE START OF WORK TO REQUEST MODIFICATION OF THE EXISTING TRAFFIC RESPONSIVE PROGRAM. UPON COMPLETION AND ACCEPTANCE OF THE TRAFFIC SIGNAL MODIFICATIONS, THE CONTRACTOR SHALL CONTACT THE SIGNAL SYSTEM ENGINEER TO REQUEST RESTORATION OF THE ORIGINAL TRAFFIC RESPONSIVE PROGRAM.
 - THE CONTRACTOR SHALL MAINTAIN THE EXISTING SIGNAL SYSTEM INTERCONNECT DURING TEMPORARY SIGNAL OPERATION. THE INSTALLATION OF THE TEMPORARY INTERCONNECT CABLE SHALL BE NON-DESTRUCTIVE.



* LEFT ON GREEN ARROW ONLY
 R10-5
 24" X 30" (TYP)
 SIGN PANEL TYPE 1

| REVISIONS | |
|-----------|------|
| NAME | DATE |
| | |
| | |
| | |
| | |
| | |

ILLINOIS DEPARTMENT OF TRANSPORTATION
 US RTE 6 (159TH ST) AT US RTE 45 (LAGRANGE RD)
 US 45 (LAGRANGE ROAD)
 AND 158TH PLACE
 TEMPORARY CABLE PLAN - STAGE 2
 SCALE: N.T.S.
 DATE: 7-07-06
 DRAWN BY: MJT
 CHECKED BY: NKU
McDonough Associates Inc.
 Engineers / Architects