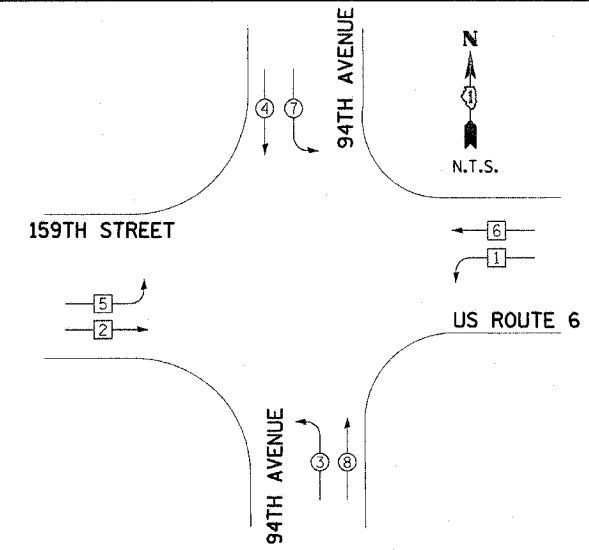
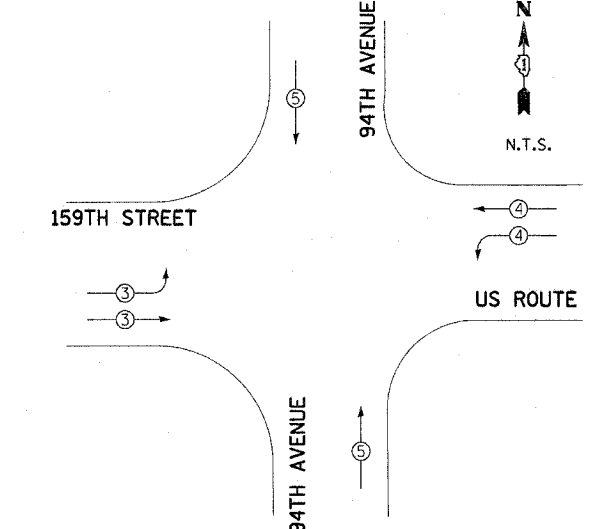


F.A.P. R.T.E.	SECTION	COUNTY	TOTAL SHEETS	SHEET NO.
351	537 R-1	COOK	245	149
STA. _____ TO STA. _____		FED. ROAD DIST. NO. _____ ILLINOIS FED. AID PROJECT		
CONTRACT # 62880				



TEMPORARY PHASE DESIGNATION DIAGRAM

PROPOSED EMERGENCY VEHICLE PREEMPTORS			
EMERGENCY VEHICLE PREEMPTORS	3	4	5
MOVEMENT			



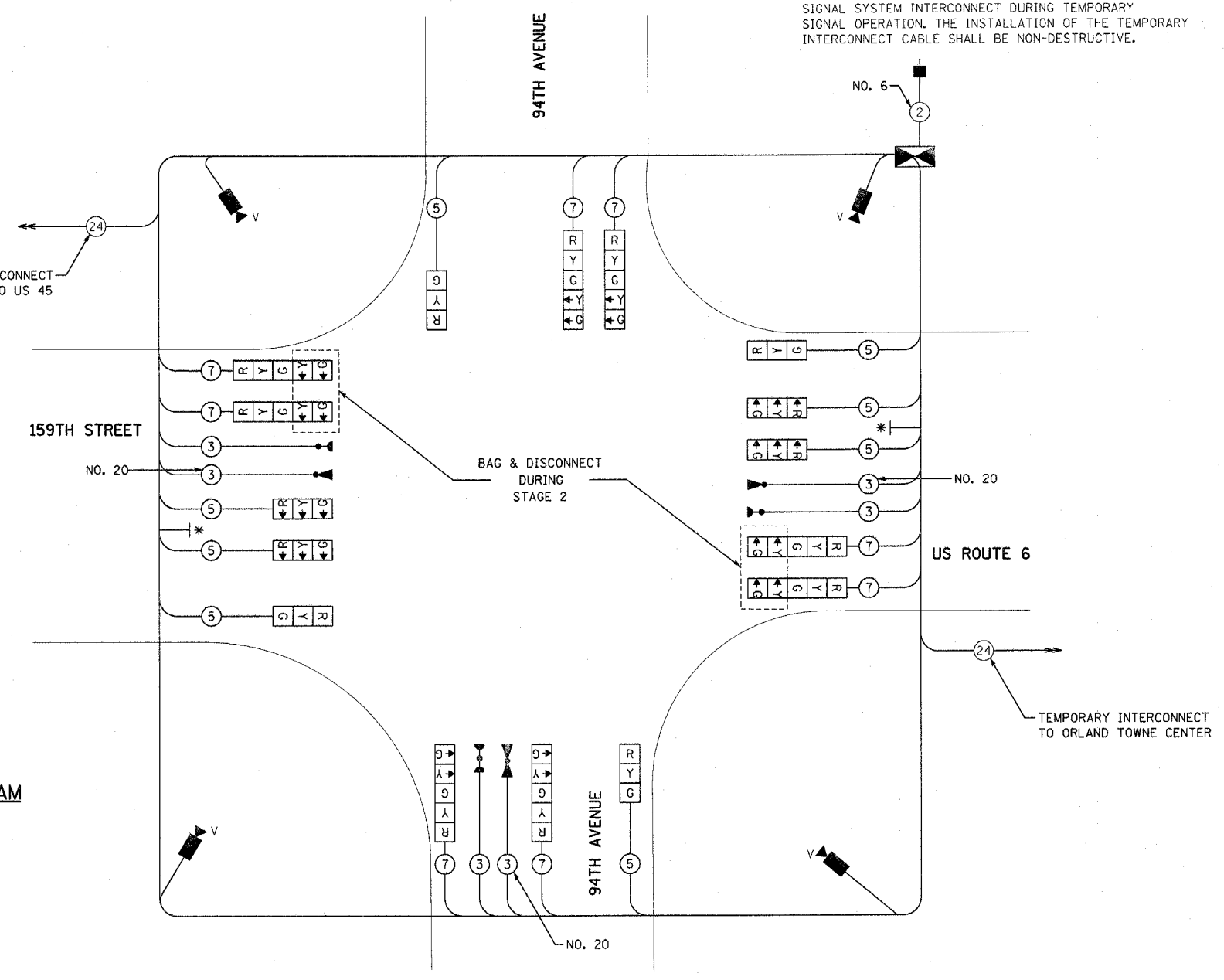
TEMPORARY EMERGENCY VEHICLE PREEMPTION DIAGRAM

- PHASE DIAGRAM LEGEND**
- DUAL ENTRY PHASE
 - SINGLE ENTRY PHASE
 - PEDESTRIAN PHASE
 - * NUMBER REFERS TO ASSOCIATED PHASE

- CONSTRUCTION NOTES**
- THE EXISTING TRAFFIC RESPONSIVE CLOSED LOOP SYSTEM OPERATION SHALL BE MAINTAINED DURING CONSTRUCTION. THE CONTRACTOR SHALL CONTACT THE COUNTY SIGNAL SYSTEM ENGINEER AT LEAST 72 HOURS PRIOR TO THE START OF WORK TO REQUEST MODIFICATION OF THE EXISTING TRAFFIC RESPONSIVE PROGRAM. UPON COMPLETION AND ACCEPTANCE OF THE TRAFFIC SIGNAL MODIFICATIONS, THE CONTRACTOR SHALL CONTACT THE SIGNAL SYSTEM ENGINEER TO REQUEST RESTORATION OF THE ORIGINAL TRAFFIC RESPONSIVE PROGRAM.
 - THE CONTRACTOR SHALL MAINTAIN THE EXISTING SIGNAL SYSTEM INTERCONNECT DURING TEMPORARY SIGNAL OPERATION. THE INSTALLATION OF THE TEMPORARY INTERCONNECT CABLE SHALL BE NON-DESTRUCTIVE.

CABLE PLAN LEGEND

- | | | |
|--|--|---|
| | | SIGNAL FACE WITH BACKPLATE, "P" INDICATES PROGRAMMED HEAD |
| | | RAILROAD CONTROL CABINET |
| | | ILLUMINATED SIGN, FIBER OPTIC 'NO LEFT TURN' |
| | | ILLUMINATED SIGN, FIBER OPTIC 'NO RIGHT TURN' |
| | | GROUND ROD AT HANDHOLE (H), DOUBLE HANDHOLE (H), OR CONTROLLER (C). |
| | | GROUND ROD AT POST (P), OR MAST ARM POLE (MA). |
| | | GROUND ROD AT ELECTRIC SERVICE INSTALLATION |
| | | GROUND CABLE IN CONDUIT NO. 6 SOLID COPPER (GREEN) |
| | | FIBER OPTIC CABLE IN CONDUIT NO. 62.5/125 24F |
| | | DENOTED COAXIAL CABLE |
| | | NO. 14 1/2 TRACER CABLE |
| | | 8" (200mm) TRAFFIC SIGNAL SECTION |
| | | 12" (300mm) TRAFFIC SIGNAL SECTION |
| | | 12" (300mm) PEDESTRIAN SIGNAL SECTION |
| | | 12" (300mm) PEDESTRIAN SIGNAL SECTION |
| | | CONTROLLER CABINET |
| | | SERVICE INSTALLATION |
| | | TELEPHONE CONNECTION |
| | | MAGNETIC DETECTOR |
| | | EMERGENCY VEHICLE LIGHT DETECTOR |
| | | CONFIRMATION BEACON |
| | | PUSHBUTTON DETECTOR |
| | | VEHICLE DETECTOR, INDUCTION LOOP |
| | | DENOTES NUMBER OF CONDUCTORS, ALL CABLE NO. 14 EXCEPT AS INDICATED. ALL LOOP DETECTOR CABLE TO BE SHIELDED. |
| | | VIDEO DETECTION CAMERA |



TEMPORARY CABLE PLAN

I.D.O.T. TRAFFIC SIGNAL INSTALLATION ELECTRICAL SERVICE REQUIREMENTS					TOTAL WATTAGE
TYPE	NO. OF LAMPS	WATTAGE INCAND. LAMP	LED	% OPERATION	
SIGNAL (RED)	16	135	17	0.50	1080.0
(YELLOW)	16	135	25	0.25	540.0
(GREEN)	16	135	15	0.25	540.0
ARROW	8	135	12	0.10	108.0
PED. SIGNAL	0	90	25	1.00	0.0
CONTROLLER	1	100	100	1.00	100.0
ILLUM. SIGN	0	84	35	0.05	0.0
FLASHER	0		25	0.50	0.0
ENERGY COST TO:				TOTAL =	2368.0

ILLINOIS DEPARTMENT OF TRANSPORTATION
 201 WEST CENTER COURT
 SCHAUMBURG, ILLINOIS 60196-1096
 ENERGY SUPPLY: CONTACT: NILES K. AKBAR
 PHONE: (708) 235-2338
 COMPANY: COMMONWEALTH EDISON

* LEFT ON GREEN ARROW ONLY
 R10-5
 24" X 30" (TYP)
 SIGN PANEL TYPE 1

REVISIONS	
NAME	DATE

ILLINOIS DEPARTMENT OF TRANSPORTATION
 US RTE 6 (159TH ST) AT US RTE 45 (LAGRANGE RD)
 US 6 (159TH STREET) AND 94TH AVENUE
 TEMPORARY CABLE PLAN - STAGE 2
 SCALE: N.T.S. DRAWN BY: MJT
 DATE: 7-07-06 DESIGNED BY: MJT
 CHECKED BY: NKU

McDonough Associates Inc.
 Engineers / Architects