

F.A.E. RTE.	SECTION	COUNTY	TOTAL SHEETS	SHEET NO.
351	537 R-1	COOK	245	150
STA. _____ TO STA. _____		ILLINOIS FED. AID PROJECT		
FED. ROAD DIST. NO. _____		CONTRACT # 62880		

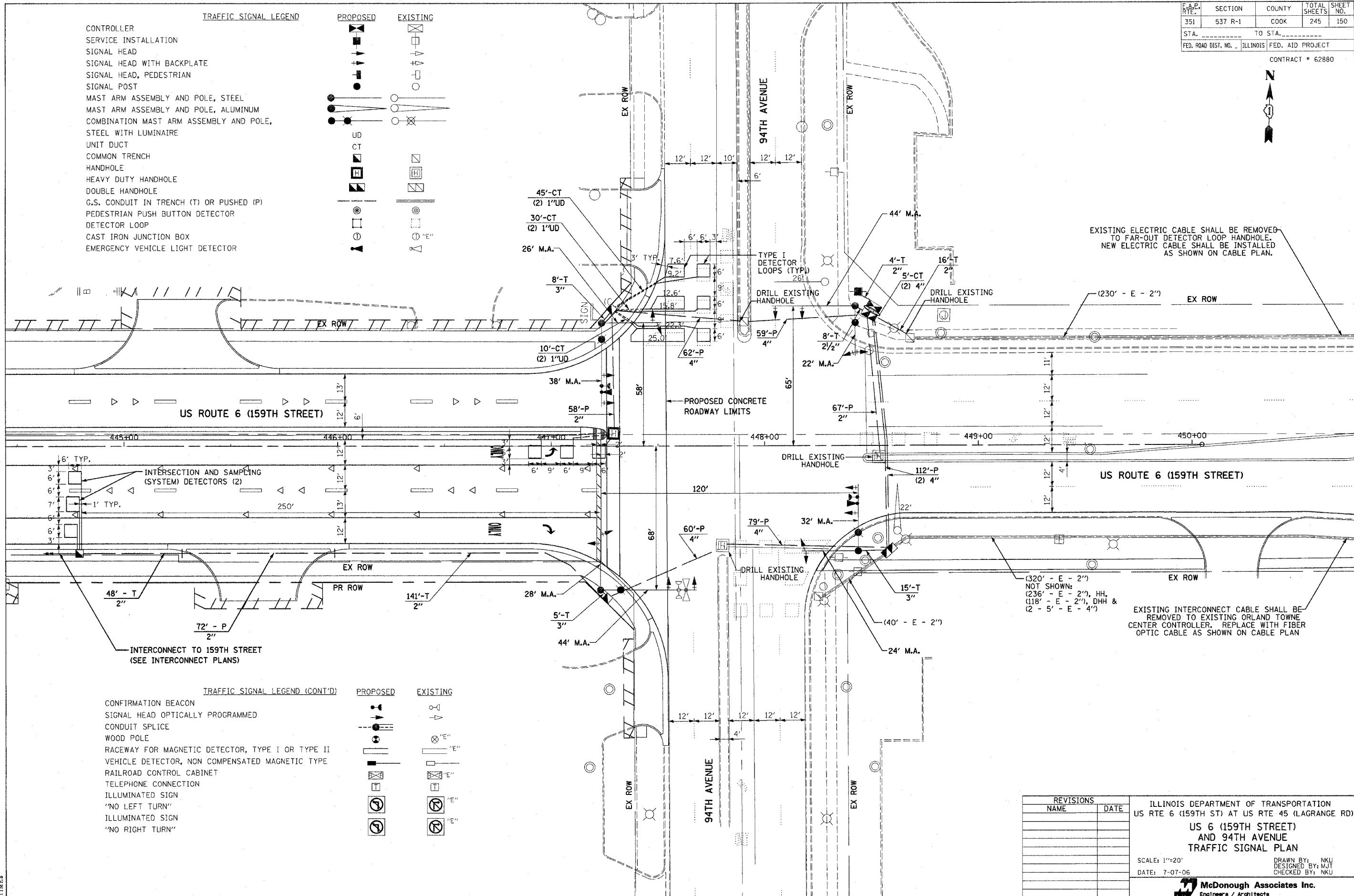


TRAFFIC SIGNAL LEGEND

	PROPOSED	EXISTING
CONTROLLER		
SERVICE INSTALLATION		
SIGNAL HEAD		
SIGNAL HEAD WITH BACKPLATE		
SIGNAL HEAD, PEDESTRIAN		
SIGNAL POST		
MAST ARM ASSEMBLY AND POLE, STEEL		
MAST ARM ASSEMBLY AND POLE, ALUMINUM		
COMBINATION MAST ARM ASSEMBLY AND POLE, STEEL WITH LUMINAIRE		
UNIT DUCT		
COMMON TRENCH		
HANDHOLE		
HEAVY DUTY HANDHOLE		
DOUBLE HANDHOLE		
G.S. CONDUIT IN TRENCH (T) OR PUSHED (P)		
PEDESTRIAN PUSH BUTTON DETECTOR		
DETECTOR LOOP		
CAST IRON JUNCTION BOX		
EMERGENCY VEHICLE LIGHT DETECTOR		

TRAFFIC SIGNAL LEGEND (CONT'D)

	PROPOSED	EXISTING
CONFIRMATION BEACON		
SIGNAL HEAD OPTICALLY PROGRAMMED		
CONDUIT SPLICE		
WOOD POLE		
RACEWAY FOR MAGNETIC DETECTOR, TYPE I OR TYPE II		
VEHICLE DETECTOR, NON COMPENSATED MAGNETIC TYPE		
RAILROAD CONTROL CABINET		
TELEPHONE CONNECTION		
ILLUMINATED SIGN		
"NO LEFT TURN" ILLUMINATED SIGN		
"NO RIGHT TURN" ILLUMINATED SIGN		



REVISIONS	
NAME	DATE

ILLINOIS DEPARTMENT OF TRANSPORTATION
 US RTE 6 (159TH ST) AT US RTE 45 (LAGRANGE RD)
**US 6 (159TH STREET)
 AND 94TH AVENUE
 TRAFFIC SIGNAL PLAN**

SCALE: 1"=20'
 DATE: 7-07-06

DRAWN BY: NKU
 DESIGNED BY: MJT
 CHECKED BY: NKU

McDonough Associates Inc.
 Engineers / Architects

FILES
 DATES
 TIMES