

STATE	SECTION	COUNTY	TOTAL SHEETS	SHEET NO.
351	537 R-1	COOK	245	151
STA. _____ TO STA. _____		FED. ROAD DIST. NO. _____ ILLINOIS FED. AID PROJECT _____		

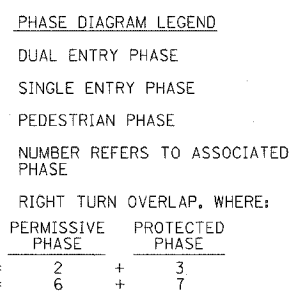
CONTRACT # 62880

CABLE PLAN LEGEND

EXISTING	PROPOSED	EXISTING	PROPOSED	DESCRIPTION
(R)	(R)	(C)	(C)	8" (200mm) TRAFFIC SIGNAL SECTION
(Y)	(Y)	(R)	(R)	12" (300mm) TRAFFIC SIGNAL SECTION
(G)	(G)	(W)	(W)	12" (300mm) PEDESTRIAN SIGNAL SECTION
(P)	(P)	(H)	(H)	12" (300mm) PEDESTRIAN SIGNAL SECTION
(S)	(S)	(T)	(T)	CONTROLLER CABINET
(MA)	(MA)	(SI)	(SI)	SERVICE INSTALLATION
(NLT)	(NLT)	(TEC)	(TEC)	TELEPHONE CONNECTION
(NRT)	(NRT)	(MD)	(MD)	MAGNETIC DETECTOR
(H)	(H)	(EVL)	(EVL)	EMERGENCY VEHICLE LIGHT DETECTOR
(P)	(P)	(CB)	(CB)	CONFIRMATION BEACON
(S)	(S)	(P)	(P)	PUSHBUTTON DETECTOR
(SI)	(SI)	(VD)	(VD)	VEHICLE DETECTOR, INDUCTION LOOP
(C)	(C)	(PD)	(PD)	PD DENOTES PERFORMED DETECTOR LOOP
(1)	(1)	(2)	(2)	DENOTES NUMBER OF CONDUCTORS, ALL CABLE NO. 14 EXCEPT AS INDICATED. ALL LOOP DETECTOR CABLE TO BE SHIELDED.
(24)	(24)			
(1)	(1)			
(V)	(V)			

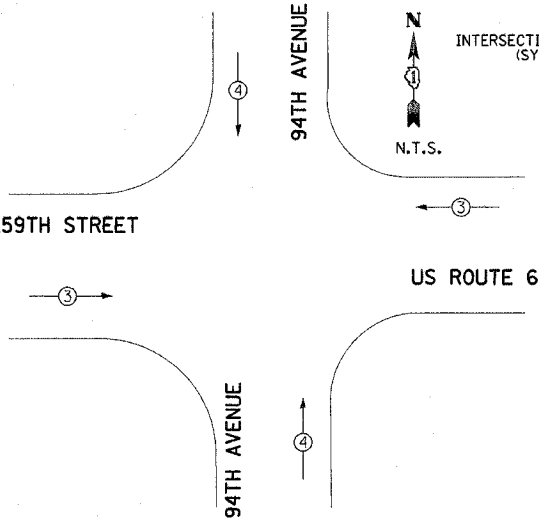
SCHEDULE OF QUANTITIES

SIGN PANEL - TYPE 1	15
SIGN PANEL - TYPE 2	0
CONDUIT IN TRENCH, 2" DIA., GALVANIZED STEEL	209
CONDUIT IN TRENCH, 2 1/2" DIA., GALVANIZED STEEL	8
CONDUIT IN TRENCH, 3" DIA., GALVANIZED STEEL	28
CONDUIT IN TRENCH, 4" DIA., GALVANIZED STEEL	10
CONDUIT PUSHED, 2" DIA., GALVANIZED STEEL	197
CONDUIT PUSHED, 4" DIA., GALVANIZED STEEL	484
HANDHOLE	3
HEAVY-DUTY HANDHOLE	1
DOUBLE HANDHOLE	2
TRENCH AND BACKFILL FOR ELECTRICAL WORK	250
FULL-ACTUATED CONTROLLER AND TYPE IV CABINET	1
TRANSCEIVER - FIBER OPTIC	1
ELECTRIC CABLE IN CONDUIT, SIGNAL NO. 14 3C	816
ELECTRIC CABLE IN CONDUIT, SIGNAL NO. 14 5C	894
ELECTRIC CABLE IN CONDUIT, SIGNAL NO. 14 7C	2646
ELECTRIC CABLE IN CONDUIT, LEAD-IN, NO. 14 1 PAIR	3885
ELECTRIC CABLE IN CONDUIT, SERVICE, NO. 6 2 C	22
STEEL MAST ARM ASSEMBLY AND POLE WITH DUAL MAST ARMS, 24 FT. AND 32 FT.	1
CONCRETE FOUNDATION, TYPE D	4
CONCRETE FOUNDATION, TYPE E 36-INCH DIAMETER	48
DRILL EXISTING HANDHOLE	7
TRAFFIC SIGNAL BACKPLATE	16
INDUCTIVE LOOP DETECTOR	14
DETECTOR LOOP, TYPE I	470
LIGHT DETECTOR	2
TEMPORARY TRAFFIC SIGNAL INSTALLATION	1
REMOVE ELECTRIC CABLE FROM CONDUIT	2977
REMOVE EXISTING TRAFFIC SIGNAL EQUIPMENT	1
REMOVE EXISTING HANDHOLE	4
REMOVE EXISTING CONCRETE FOUNDATION	9
ELECTRIC CABLE IN CONDUIT, GROUND, NO. 6 1C (GREEN)	494
PERFORMED DETECTOR LOOP	243
SERVICE INSTALLATION - POLE MOUNTED	1
ELECTRIC CABLE IN CONDUIT NO. 20 3/C, TWISTED, SHIELDED	816
SIGNAL HEAD LED, 1-FACE, 3-SECTION, MAST-ARM MOUNTED	4
SIGNAL HEAD LED, 1-FACE, 5-SECTION, MAST-ARM MOUNTED	12
RELOCATE LIGHT DETECTOR	1
RELOCATE LIGHT DETECTOR AMPLIFIER	1
STEEL MAST ARM ASSEMBLY AND POLE WITH DUAL MAST ARMS, 26 FT. AND 38 FT.	1
STEEL MAST ARM ASSEMBLY AND POLE WITH DUAL MAST ARMS, 44 FT AND 22 FT.	1
STEEL MAST ARM ASSEMBLY AND POLE WITH DUAL MAST ARMS, 44 FT AND 28 FT.	1



PHASE DESIGNATION DIAGRAM

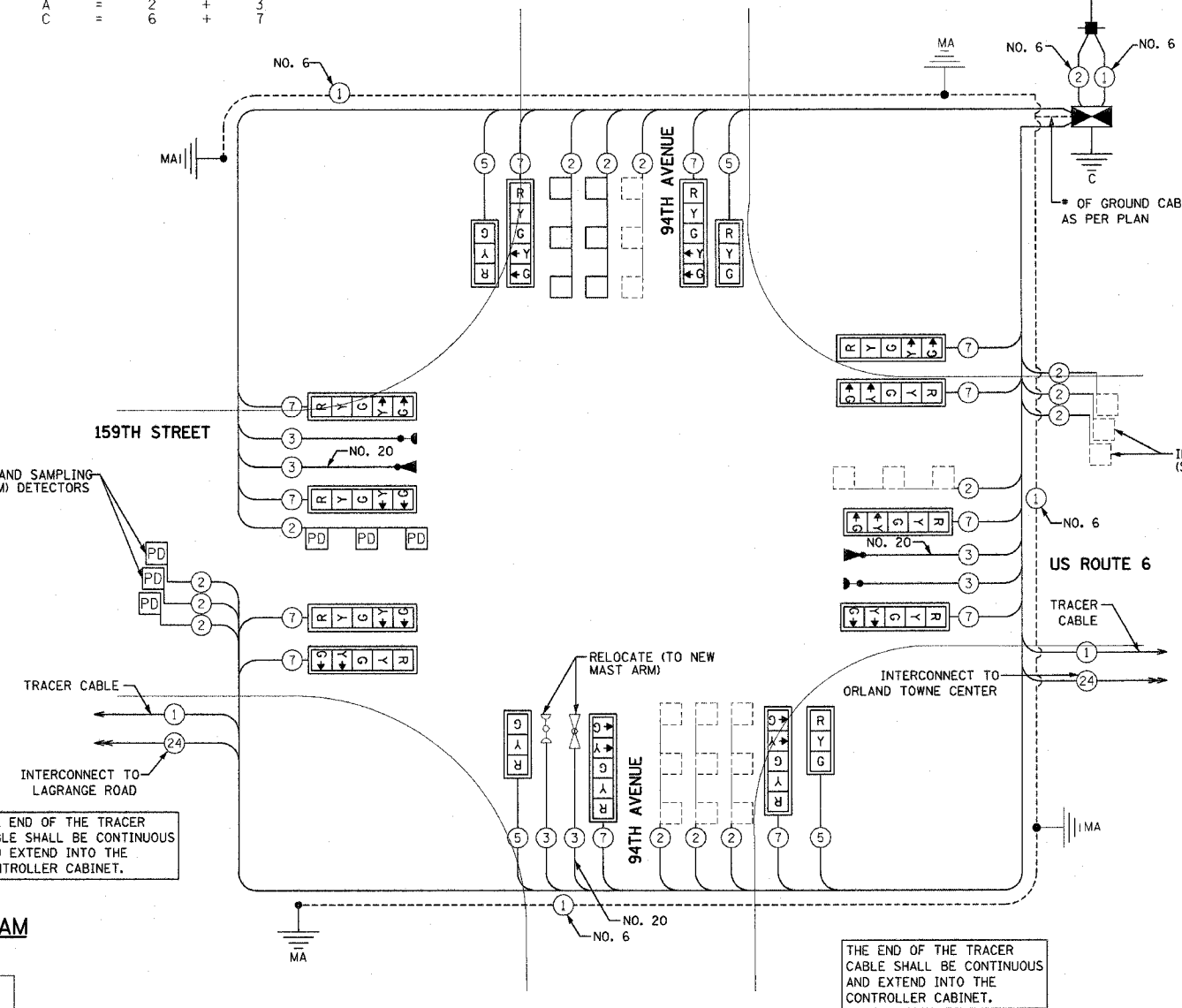
PROPOSED EMERGENCY VEHICLE PREEMPTORS	
EMERGENCY VEHICLE PREEMPTORS	3 4
MOVEMENT	← → ↑ ↓



EMERGENCY VEHICLE PREEMPTION DIAGRAM

I.D.O.T. TRAFFIC SIGNAL INSTALLATION ELECTRICAL SERVICE REQUIREMENTS					TOTAL WATTAGE
TYPE	NO. OF LAMPS	WATTAGE INCAND.	LED	% OPERATION	
SIGNAL (RED)	16	135	17	0.50	136.0
(YELLOW)	16	135	25	0.25	100.0
(GREEN)	16	135	15	0.25	60.0
ARROW	24	135	12	0.10	28.8
PED. SIGNAL	0	90	25	1.00	0.0
CONTROLLER	1	100	100	1.00	100.0
ILLUM. SIGN	0	84	35	0.05	0.0
FLASHER	0		25	0.50	0.0
ENERGY COST TO:				TOTAL =	424.8

ILLINOIS DEPARTMENT OF TRANSPORTATION
 201 WEST CENTER COURT
 SCHAUMBURG, ILLINOIS 60196-1096
 ENERGY SUPPLY: CONTACT: NILES K. AKBAR
 PHONE: (708) 235-2338
 COMPANY: COMMONWEALTH EDISON



CABLE PLAN

FOUNDATION (DEPTH)	FT (m)	CABLE SLACK	FT (m)	VERTICAL	FT. (m)
TYPE A - POST	4 (1.2)	HANDHOLE	6.5 (2.0)	ALL FOUNDATIONS	3.5 (1.0)
TYPE D-CONTROLLER	4 (1.2)	DOUBLE HANDHOLE	13 (4.0)	MAST ARM (L) POLE	20'+L= (6m+L)=
30", TYPE E	15 (4.6)	SIGNAL POST	2 (1.0)	BRACKET MOUNTED	13 (4.0)
36", TYPE E	15 (4.6)	CONTROLLER CAB.	1 (0.5)	PED. PUSHBUTTON	4 (1.2)
		FIBER OPTIC	13 (4.0)	ELECTRIC SERVICE	13.5 (4.1)
		ELECTRIC SERVICE	1 (0.5)	SERVICE TO GROUND	13.5 (4.1)
		GROUND CABLE	1 (0.5)	POST MOUNTED	6 (1.8)

NOTE:
 ALL EXISTING CABLE TO BE REMOVED FROM CONDUIT AND REPLACED WITH NEW CABLE

REVISIONS	
NAME	DATE

ILLINOIS DEPARTMENT OF TRANSPORTATION
 US RTE 6 (159TH ST) AT US RTE 45 (LAGRANGE RD)
US 6 (159TH STREET) AND 94TH AVENUE CABLE PLAN
 SCALE: N.T.S.
 DATE: 7-07-06
 DRAWN BY: MJT
 DESIGNED BY: MJT
 CHECKED BY: NKU
McDonough Associates Inc.
 Engineers / Architects