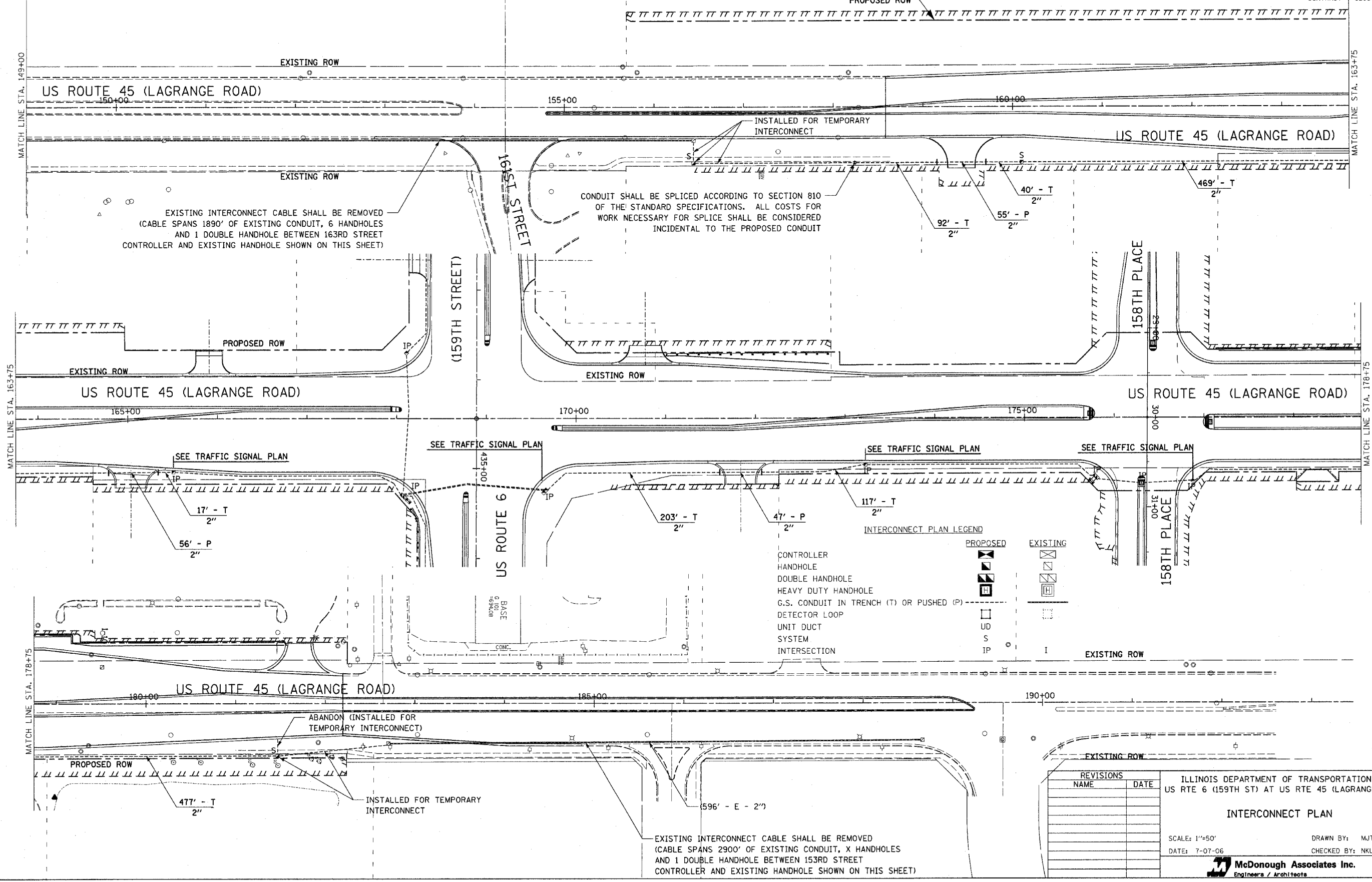


E.A.E. RTE.	SECTION	COUNTY	TOTAL SHEETS	SHEET NO.
351	537 R-1	COOK	245	155
STA.		TO STA.		
FED. ROAD DIST. NO.		ILLINOIS FED. AID PROJECT		



CONTRACT 62880



INTERCONNECT PLAN LEGEND

	PROPOSED	EXISTING
CONTROLLER	[Symbol]	[Symbol]
HANDHOLE	[Symbol]	[Symbol]
DOUBLE HANDHOLE	[Symbol]	[Symbol]
HEAVY DUTY HANDHOLE	[Symbol]	[Symbol]
G.S. CONDUIT IN TRENCH (T) OR PUSHED (P)	[Symbol]	[Symbol]
DETECTOR LOOP	[Symbol]	[Symbol]
UNIT DUCT	[Symbol]	[Symbol]
SYSTEM	[Symbol]	[Symbol]
INTERSECTION	[Symbol]	[Symbol]

REVISIONS	
NAME	DATE

ILLINOIS DEPARTMENT OF TRANSPORTATION
US RTE 6 (159TH ST) AT US RTE 45 (LAGRANGE RD)

INTERCONNECT PLAN

SCALE: 1"=50'

DATE: 7-07-06

DRAWN BY: MJT
CHECKED BY: NKU

McDonough Associates Inc.
Engineers / Architects

FILES
DATES
STAMP