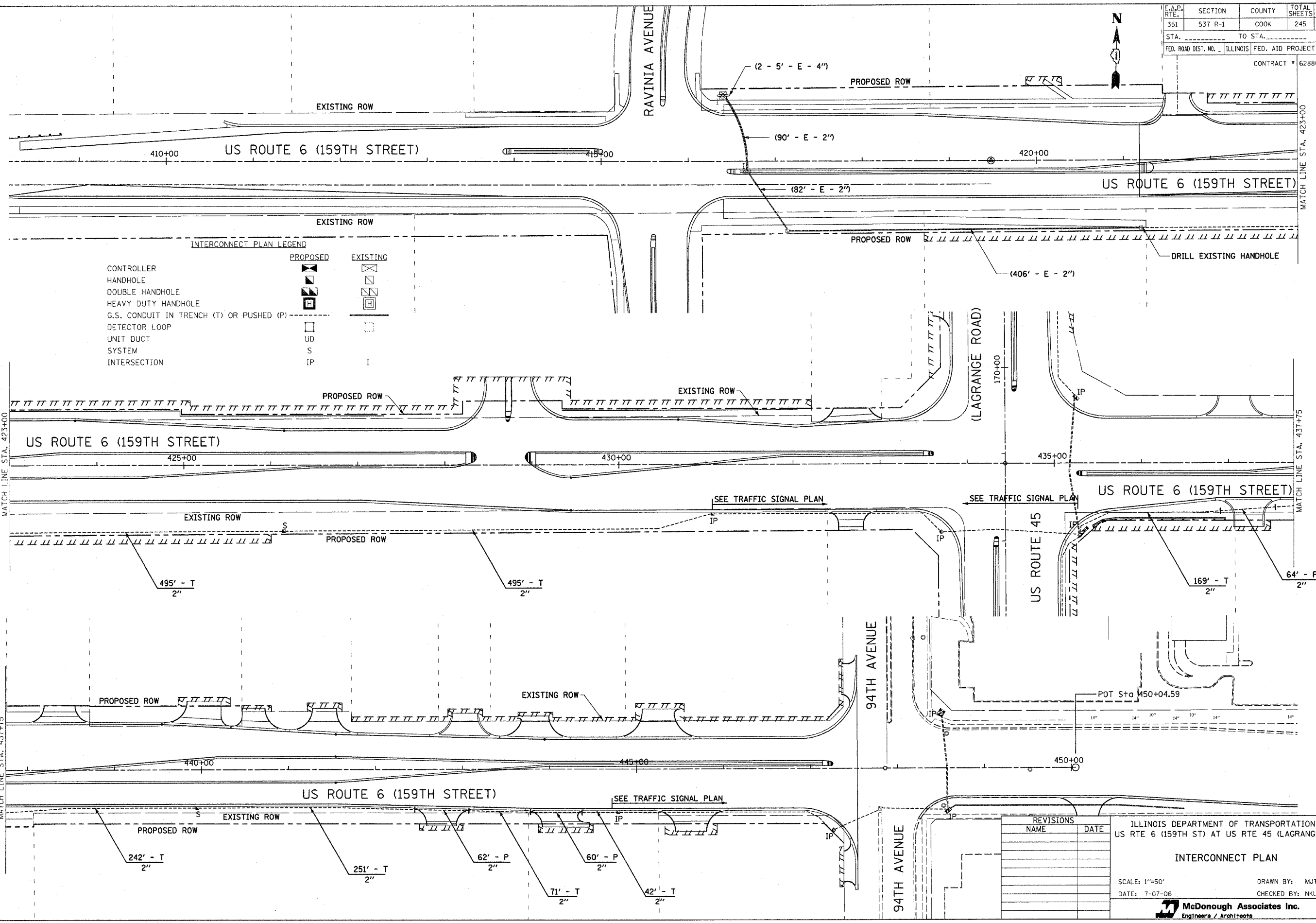


S.A.E. RTE.	SECTION	COUNTY	TOTAL SHEETS	SHEET NO.
351	537 R-1	COOK	245	156
STA.	TO STA.			
FED. ROAD DIST. NO.	ILLINOIS	FED. AID PROJECT		
CONTRACT # 62880				



INTERCONNECT PLAN LEGEND

CONTROLLER	PROPOSED	EXISTING
HANDHOLE	[Symbol]	[Symbol]
DOUBLE HANDHOLE	[Symbol]	[Symbol]
HEAVY DUTY HANDHOLE	[Symbol]	[Symbol]
G.S. CONDUIT IN TRENCH (T) OR PUSHED (P)	[Symbol]	[Symbol]
DETECTOR LOOP	[Symbol]	[Symbol]
UNIT DUCT	UD	
SYSTEM	S	
INTERSECTION	IP	I

REVISIONS	NAME	DATE

ILLINOIS DEPARTMENT OF TRANSPORTATION
 US RTE 6 (159TH ST) AT US RTE 45 (LAGRANGE RD)
INTERCONNECT PLAN
 SCALE: 1"=50'
 DATE: 7-07-06
 DRAWN BY: MJT
 CHECKED BY: NKU
McDonough Associates Inc.
 Engineers / Architects

FILES
 SDATES
 STIMES