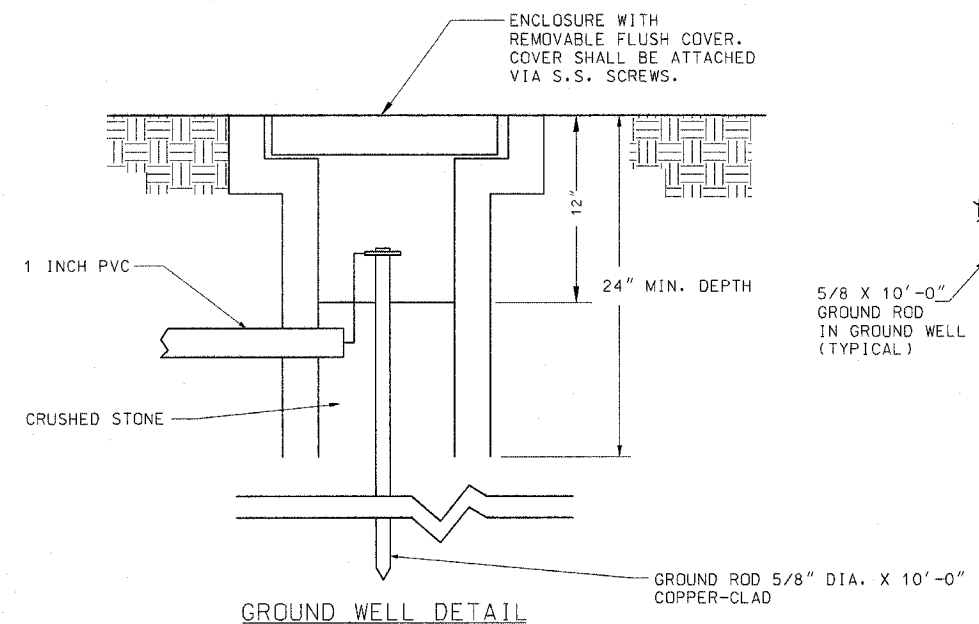
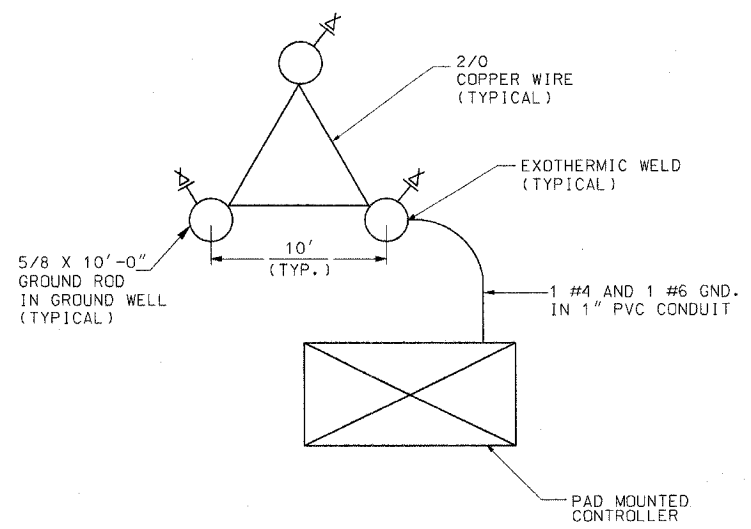


F.A.P. RTE.	SECTION	COUNTY	TOTAL SHEETS	SHEET NO.
351	537 R-1	COOK	245	173
STA.	TO STA.			
FED. ROAD DIST. NO.	ILLINOIS	FED. AID PROJECT		

CONTRACT # 62880



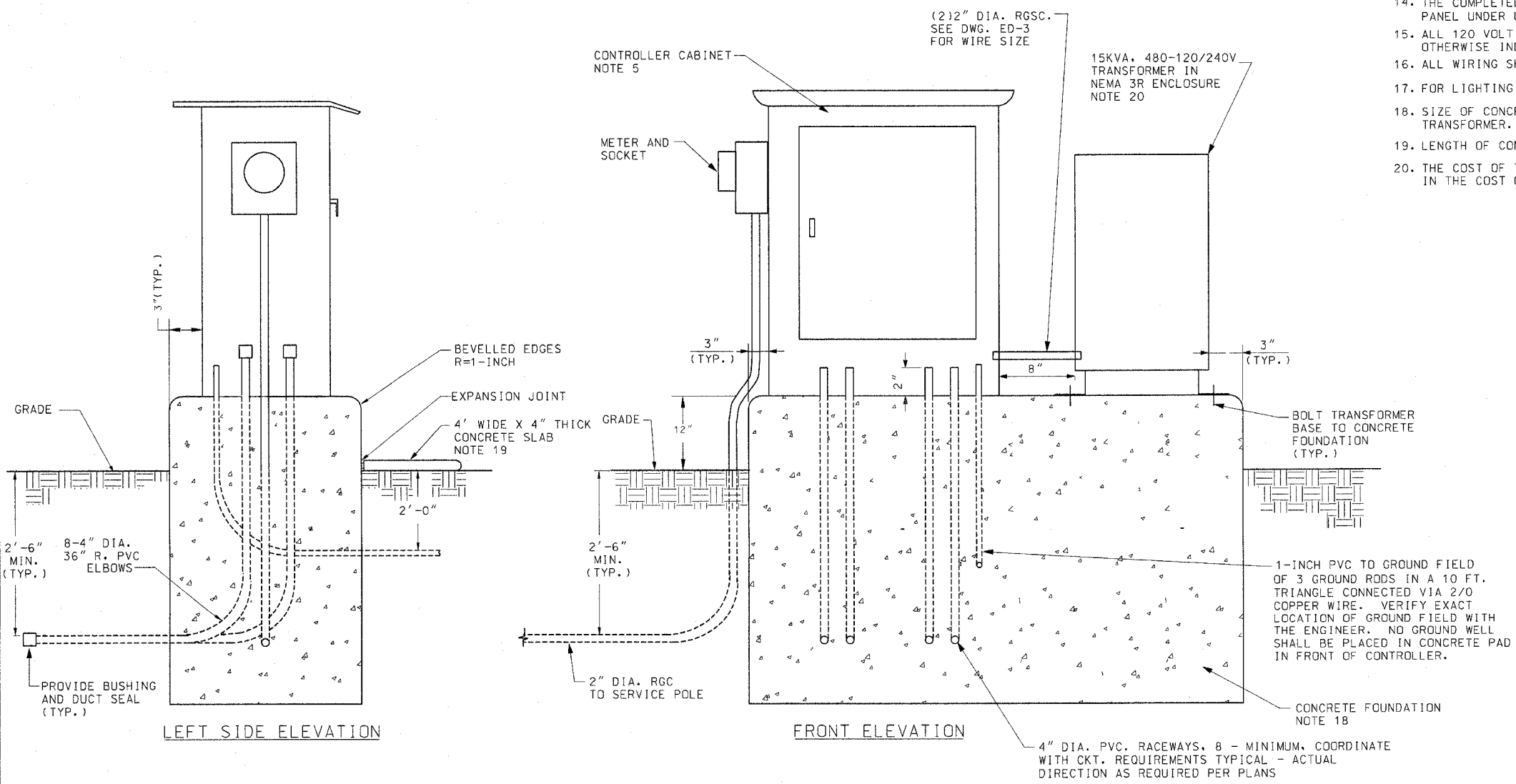
GROUND WELL DETAIL



GROUND FIELD DETAIL

**GENERAL NOTES:**

- COORDINATE PLACEMENT OF RACEWAYS WITH CONTROLLER MANUFACTURER TO ASSURE DOOR LATCH DOES NOT INTERFERE WITH CABLES OR OTHER DEVICES.
- NOT USED.
- THE CONTRACTOR SHALL PROVIDE A GROUND FIELD AT EACH CABINET LOCATION. THE GROUND RODS, ANCHOR BOLTS AND REINFORCEMENT STEEL SHALL ALL BE INTERCONNECTED.
- THE CONTRACTOR SHALL VERIFY EXACT LOCATION OF GROUND FIELD WITH THE ENGINEER.
- SEE DRAWING ED-6 FOR CONTROL CABINET DETAILS.
- ALL SCREWS AND HARDWARE SHALL BE PLATED, GALVANIZED, OR MADE OF BRASS, ALUMINUM OR STAINLESS STEEL.
- NAME PLATE SHALL HAVE ENGRAVED 0.75 INCH HIGH LETTERS FILLED IN BLACK: "ROADWAY LIGHTING CONTROLLER, VILLAGE OF ORLAND PARK".
- ONE INCH THICK POLYISOCYANURATE INSULATION SHALL BE INSTALLED AND PERMANENTLY CEMENTED ON ALL SIDES OF THE CABINET AND DOORS.
- ALL DEVICES SHALL BE FRONT REMOVABLE.
- ALL LUGS SHALL BE OF COPPER SCREWS AND CONNECTORS, SPRING HELD.
- ALL CONTROL WIRING SHALL BE 600V MACHINE TOOL WIRE TYPE MTW.
- ALL POWER WIRING SHALL BE 600V TYPE RHH/RHW.
- CIRCUIT BREAKERS, CONTACTORS AND OTHER COMPONENTS SHALL BE PANEL MOUNTED ON 0.125 INCH THICK GLASTIC INSULATION BACK PANEL.
- THE COMPLETED CONTROLLER SHALL BE U.L. LISTED AS AN INDUSTRIAL CONTROL PANEL UNDER UL508.
- ALL 120 VOLT SYSTEM AND ALL CONTROL WIRING SHALL BE #12AWG STRANDED UNLESS OTHERWISE INDICATED.
- ALL WIRING SHALL BE NEATLY DRESSED AND SUPPORTED.
- FOR LIGHTING CONTROLLER WIRING DIAGRAM, SEE DRAWING ED-3.
- SIZE OF CONCRETE FOUNDATION AS REQUIRED TO SUPPORT CONTROL CABINET AND TRANSFORMER.
- LENGTH OF CONCRETE SLAB SHOULD MATCH LENGTH OF CONCRETE FOUNDATION.
- THE COST OF THE TRANSFORMER AND THE RELATED WORK SHALL BE INCLUDED IN THE COST OF "LIGHTING CONTROLLER, SPECIAL, 200A, 240/480V" PAY ITEM.



LEFT SIDE ELEVATION

FRONT ELEVATION

ED-2

REVISIONS	
NAME	DATE

ILLINOIS DEPARTMENT OF TRANSPORTATION  
 US RTE 6 (159TH ST) AT US RTE 45 (LAGRANGE RD)  
**GROUNDING AND LIGHTING CONTROLLER  
 INSTALLATION DETAILS**  
 SCALE: NONE  
 DATE: 7-07-06  
 DRAWN BY: MB  
 CHECKED BY: KMY

**McDonough Associates Inc.**  
 Engineers / Architects

SPRUE  
 SDATES  
 STIMES