

STATE OF ILLINOIS
DEPARTMENT OF TRANSPORTATION
DIVISION OF HIGHWAYS

RTE	SECTION	COUNTY	TOTAL SHEETS	SHEET NO.
VARIOUS	2005-026 GRR	VARIOUS	18	1

CONTRACT 62960
D-91-213-05

FOR INDEX OF SHEETS, SEE SHEET NO. 2

PLANS FOR PROPOSED
FEDERAL AID HIGHWAY

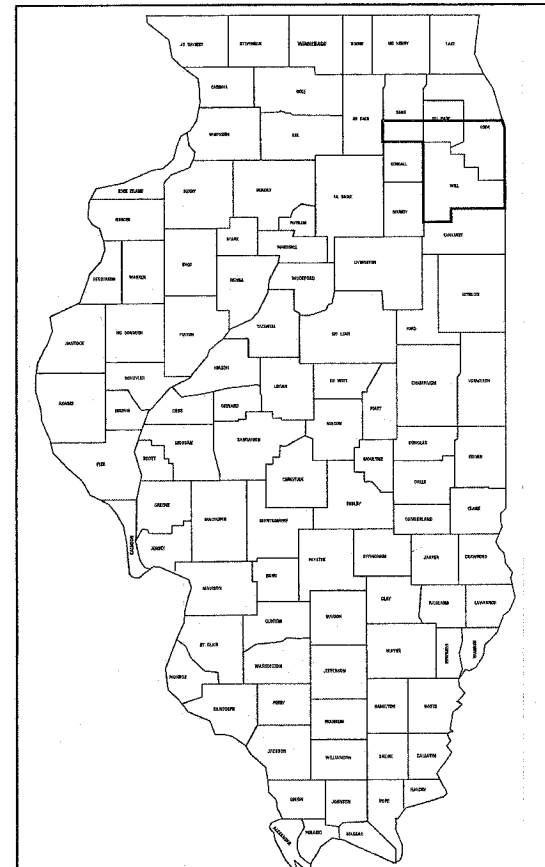
ROUTE: VARIOUS EXPRESSWAYS AND ARTERIAL
HIGHWAYS - SOUTHERN PART, DISTRICT ONE

GUARDRAIL REPAIR

SECTION: 2005-026 GRR

COUNTY: VARIOUS DISTRICT WIDE

C-91-213-05



THIS SECTION IS LOCATED ALONG VARIOUS
ROUTES WITHIN COOK, KANE, DUPAGE AND WILL COUNTIES.

SEE LOCATION MAPS
SHEETS 4 THRU 7

STATE OF ILLINOIS
DEPARTMENT OF TRANSPORTATION
DIVISION OF HIGHWAYS

SUBMITTED Sept 11 2006
Diane O'Keefe / col
DEPUTY DIRECTOR OF HIGHWAYS REGION ENGINEER

October 13 2006
Mike Hane / RD
ENGINEER OF DESIGN AND ENVIRONMENT

October 13 2006
Milton R. Sisco, P.E. / RS
DIRECTOR OF HIGHWAYS/CHIEF ENGINEER

PRINTED BY THE AUTHORITY
OF THE STATE OF ILLINOIS

CONTRACT NO. 62960

REGION ONE - BUREAU OF DESIGN
PLAN PREPARATION ENGINEER: K. ENG/R. BORO (847) 705-4178

R.F.L. NO.	SECTION	COUNTY	TOTAL SHEETS	SHEET NO.
VAR.2005-026	GRR	*	18	2
STA.	TO STA.			
FED. ROAD DIST. NO.	ILLINOIS	FED. AID PROJECT		

* WILL. KANE, DU PAGE AND COOK

CONTRACT 62960

INDEX OF SHEETS

1. TITLE SHEET
2. INDEX OF SHEETS
LIST OF APPLICABLE STATE STANDARDS
GENERAL NOTES
3. SUMMARY OF QUANTITIES
4. COOK COUNTY LOCATION MAP
5. KANE COUNTY LOCATION MAP
6. DUPAGE COUNTY LOCATION MAP
7. WILL COUNTY LOCATION MAP
8. TYPICAL DETAILS FOR STEEL PLATE BEAM
GUARDRAIL ANCHORAGE REPAIR
9. TYPICAL DETAIL FOR GUARDRAIL ANCHOR BLOCK REPAIR
10. TYPICAL DETAIL TO ANCHOR STEEL PLATE BEAM
GUARDRAIL ON CONCRETE
11. DETAIL FOR CENTER LONGITUDINAL GUARDRAIL JOINT
12. DETAIL OF STEEL BEAM GUARDRAIL SPECIAL
13. DETAIL OF GUARDRAIL SUPPORT AND END ANCHORAGE
14. DETAIL OF THRIE-BEAM GUARDRAIL WITH MODIFIED OFFSET BLOCK
15. STEEL PLATE BEAM GUARDRAIL STEEL BLOCK-OUT DETAIL
16. CURB REMOVAL (PARTIAL) AND SHOULDER WIDENING
FOR TRAFFIC BARRIER TERMINAL, TYPE 1, SPECIAL
17. STEEL BRIDGE RAIL DETAIL
18. TRAFFIC CONTROL DETAIL FOR SHOULDER CLOSURE AND PARTIAL RAMP CLOSURE

STATE STANDARDS

630001-06	701006-02	701411-03
630301-03	701011-01	701501-03
631006-03	701101-01	701606-04
631011-02	701201-02	701701-04
631026-02	701301-02	701801-03
631031-05	701400-02	702001-06
631036-04	701401-03	720011
635006-02	701406-04	BLR-23-1
635011-01		

GENERAL NOTES

ALL WORK IS TO BE REPLACED IN KIND OR AS INDICATED ON THE CONTRACT QUANTITY SHEET.

GUARDRAIL WORK WILL INCLUDE ALIGNMENT AS NECESSARY TO RESTORE THE RAIL TO THE ORIGINAL CONDITIONS.

REMOVAL OF DAMAGED MATERIALS WILL INCLUDE DISMANTLING, LOADING, HAULING AND DISPOSAL. THE WORK SITE WILL BE LEFT IN A SAFE AND ORDERLY CONDITION.

NO MATERIAL SHOULD BE LEFT ON OR NEAR THE ROADWAY DURING NON-WORKING HOURS.

ANY NECESSARY TRAFFIC CONTROL WILL BE PROVIDED BY THE CONTRACTOR; APPROPRIATE STANDARDS ARE HEREWITH ATTACHED (SEE COVER SHEET).

THE LIMITS OF THE DAMAGED GUARDRAIL WILL BE MARKED WITH PAINT. THE REPLACEMENT PARTS AND THE QUANTITIES INDICATED ARE WITHIN THESE LIMITS AS MARKED.

REMOVED GUARDRAIL THAT IS NOT REPLACED ON THE SAME DAY MUST BE DELINEATED WITH LIGHTED BARRICADES. NO LOCATIONS WILL BE LEFT WITHOUT EITHER LIGHTED BARRICADES OR RESTORED GUARDRAIL AT ANY TIME.

GUARDRAIL MARKERS SHALL NOT BE ATTACHED TO TERMINAL SECTIONS.

REVISIONS	
NAME	DATE
CREATED	10-31-88

ILLINOIS DEPARTMENT OF TRANSPORTATION

INDEX OF SHEETS, PLAN SHEETS
AND STATE STANDARDS

SCALE: NONE
DATE: 10-31-88

DRAWN BY R.F.L.
CHECKED BY

SUMMARY OF QUANTITIES

URBAN
SFTY - 3J →
100% STATE

FA. ETC.	SECTION	COUNTY	TOTAL SHEETS	SHEET NO.
VAR	2005-026 GRR	*	18	3
STA.	TO STA.			
FED. ROAD DIST. NO.	ILLINOIS	FED. AID PROJECT		

* COOK, KANE, DU PAGE AND WILL

CONTRACT 62960

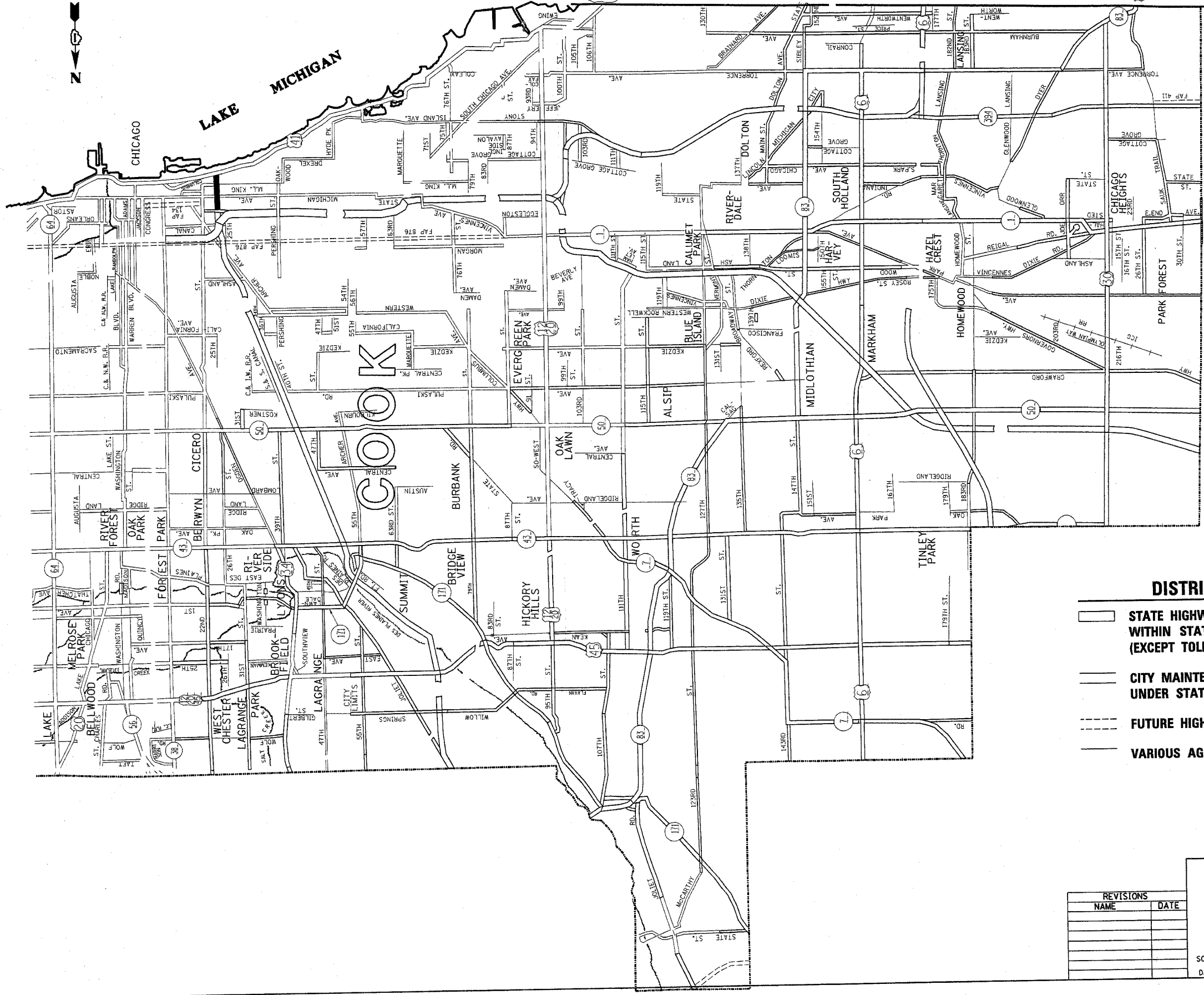
CODE NO.	ITEM	UNIT	TOTAL QUANTITY	CONTRACT MAINTENANCE	100% MchD
X0301763	FURNISHING AND INSTALLING TRAFFIC BARRIER TERMINAL, TYPE 1B	EACH	2	1	1
63001105	FURNISHING AND INSTALLING GUARDRAIL BLOCKS	EACH	1200	1020	180
63001205	FURNISHING AND INSTALLING GUARDRAIL CHANNEL	EACH	45	40	5
63001305	FURNISHING AND INSTALLING RAIL ELEMENT PLATES	EACH	1600	1360	240
63300800	GUARDRAIL POST VERTICAL ADJUSTMENT	EACH	75	64	11
50901001	STEEL BRIDGE RAIL	FOOT	150	125	25
78201000	TERMINAL MARKERS-DIRECT APPLIED	EACH	6	5	1
78200405	GUARDRAIL MARKERS	EACH	466	415	51
Z0025200	FURNISHING AND INSTALLING CONNECTING END SECTION	EACH	3	2	1
Z0025600	FURNISHING AND INSTALLING RETURN END SECTION	EACH	5	4	1
Z0025800	FURNISHING AND INSTALLING SINGLE END SECTION	EACH	6	5	1
Z0026200	FURNISHING AND INSTALLING TRAFFIC BARRIER TERMINAL TYPE 2	EACH	7	6	1
Z0026700	FURNISHING AND SETTING STEEL POSTS	EACH	1000	850	150
Z0026800	FURNISHING AND SETTING STEEL POSTS (MODIFIED)	EACH	15	13	2
Z0026900	FURNISHING AND SETTING STEEL POSTS (SPECIAL)	EACH	9	7	2
Z0051400	REMOVING AND RESETTNG POSTS	EACH	150	128	22
Z0052100	REPAIR STEEL PLATE BEAM GUARD RAIL, TYPE B	FOOT	100	87.5	12.5
Z0052200	REPAIR STEEL PLATE BEAM GUARD RAIL, TYPE C	FOOT	25	12.5	12.5
Z0052550	REPAIR TRAFFIC BARRIER TERMINAL, TYPE 1B	EACH	2	1	1
Z0052600	REPAIR TRAFFIC BARRIER TERMINAL TYPE 2	EACH	18	15	3
Z0052900	REPAIR TRAFFIC BARRIER TERMINAL TYPE 4	EACH	3	2	1
Z0053000	REPAIR TRAFFIC BARRIER TERMINAL TYPE 5	EACH	4	3	1
Z0053200	REPAIR TRAFFIC BARRIER TERMINAL TYPE 6	EACH	4	3	1
Z0053400	REPAIR TRAFFIC BARRIER TERMINAL TYPE 8	EACH	3	2	1
X0300501	FURNISHING AND INSTALLING TRAFFIC BARRIER TERMINAL TYPE 1, NOSE	EACH	16	13	3
XZ190600	FURNISHING AND INSTALLING TRAFFIC BARRIER TERMINAL TYPE 6	EACH	2	1	1
X0321152	FURNISHING AND INSTALLING RADIUS RAIL ELEMENT PLATES	EACH	40	35	5
XZ190500	FURNISHING AND INSTALLING TRAFFIC BARRIER TERMINAL TYPE 5	EACH	2	1	1
X0321562	FURNISHING AND INSTALLING TRAFFIC BARRIER TERMINAL TYPE 3 SPECIAL	EACH	3	2	1
X0321563	REPAIR TRAFFIC BARRIER TERMINAL TYPE 1 SPECIAL	EACH	200	170	30
X0321564	REPAIR TRAFFIC BARRIER TERMINAL TYPE 3 SPECIAL	EACH	7	6	1
X0322240	FURNISHING AND SETTING THRIE-BEAM POSTS	EACH	4	3	1
X0322241	FURNISHING AND INSTALLING THRIE-BEAM RADIUS ELEMENT PLATES	EACH	4	3	1
X0320619	FURNISHING AND INSTALLING THRIE-BEAM GUARDRAIL ELEMENT PLATES	EACH	4	3	1
X0322242	FURNISHING AND INSTALLING THRIE-BEAM MODIFIED BLOCKS	EACH	4	3	1
X0322451	REPAIR TRAFFIC BARRIER TERMINAL TYPE 1 SPECIAL - POST	EACH	200	170	30
X0322452	REPAIR TRAFFIC BARRIER TERMINAL TYPE 1 SPECIAL - RAIL ELEMENT PLATE	EACH	60	53	7
X0322603	FURNISHING AND INSTALLING TRAFFIC BARRIER TERMINAL TYPE 3 SPECIAL, NOSE	EACH	7	6	1
44002300	CURB REMOVAL (PARTIAL)	FOOT	100	100	0
X0301849	FURNISHING AND INSTALLING TRAFFIC BARRIER TERMINAL TYPE 1 , SPECIAL (TANGENT)	EACH	32	30	2
X0301850	FURNISHING AND INSTALLING TRAFFIC BARRIER TERMINAL TYPE 1 , SPECIAL (FLARED)	EACH	6	5	1
63000000	STEAL PLATE BEAM GUARD RAIL, TYPE A	FOOT	1500	1500	0
63100167	TRAFFIC BARRIER TERMINAL TYPE 1, SPECIAL (TANGENT)	EACH	2	2	0
63100045	TRAFFIC BARRIER TERMINAL TYPE 2	EACH	2	2	0
Z0052400	REPAIR TRAFFIC BARRIER TERMINAL, TYPE 1	EACH	9	7	2

ILLINOIS DEPARTMENT OF TRANSPORTATION
GUARDRAIL REPAIR
 SECTION 2005-026 GRR
 SOUTHERN PART, DISTRICT ONE
 SUMMARY OF QUANTITIES SHEET




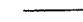
SCALE: NONE
 DATE 10/3/2006
 DRAWN BY
 CHECKED BY

10/3/2006
 c:\projects\m1061888\m061888b.m32
 V1-NORTH

* WILL, KANE, DU PAGE AND COOK
CONTRACT 62960



DISTRICT NO. 1

-  STATE HIGHWAYS & EXPRESSWAYS WITHIN STATE JURISDICTION. (EXCEPT TOLLWAYS)
-  CITY MAINTENANCE AGREEMENTS UNDER STATE JURISDICTION
-  FUTURE HIGHWAYS
-  VARIOUS AGENCIES HIGHWAYS

ILLINOIS DEPARTMENT OF TRANSPORTATION
 SOUTHERN PART, DISTRICT 1

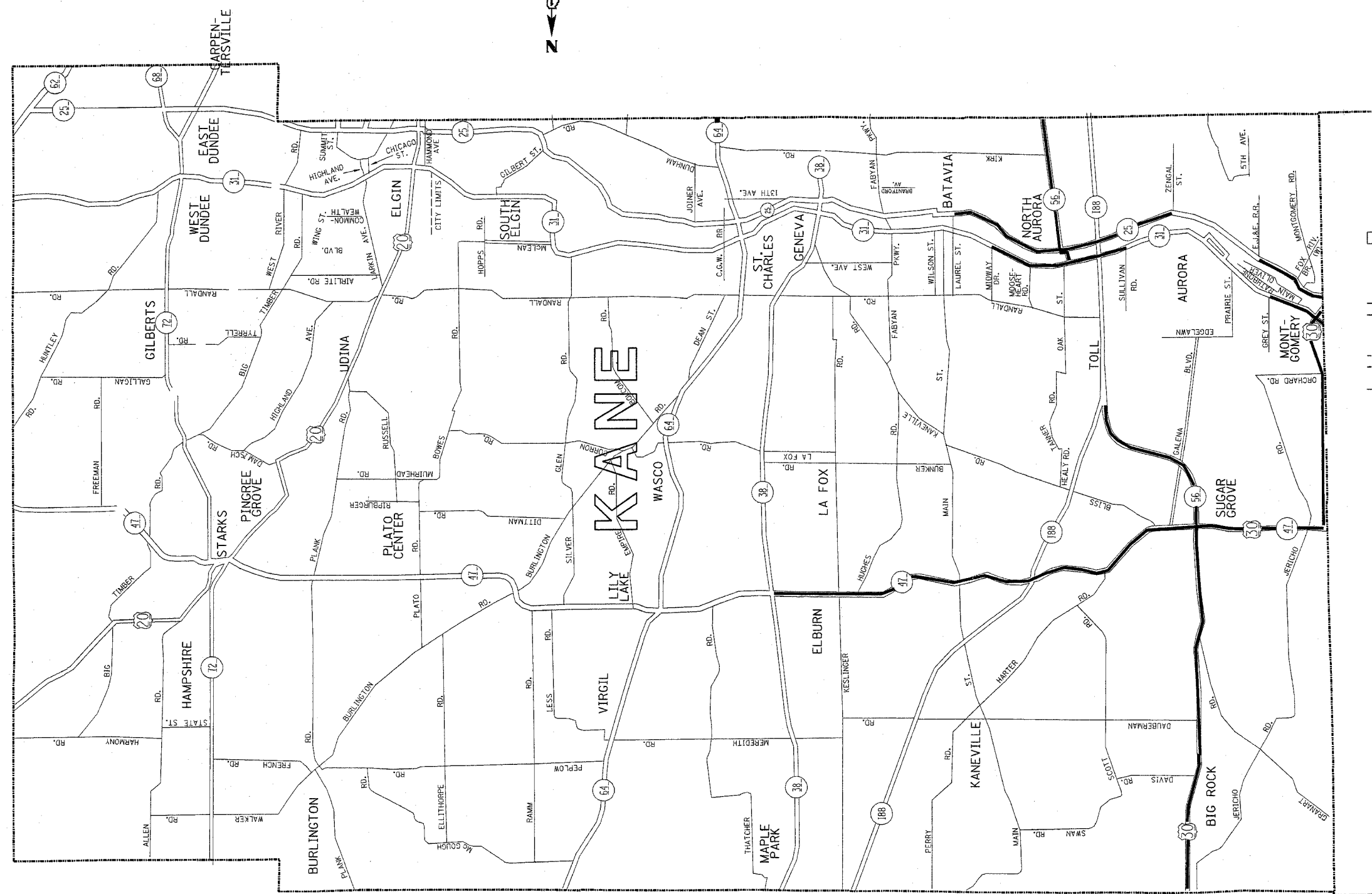
GUARDRAIL REPAIR
 LOCATION MAP
 COOK COUNTY
 SOUTH OF ILL. RTE. 38

REVISIONS	
NAME	DATE

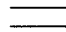

SCALE: 1"=3 MILES
 DATE: 10/2/2006
 DRAWN BY
 CHECKED BY

P. A. NO.	SECTION	COUNTY	TOTAL SHEETS	SHEET NO.
VAR2005-026	GRR	*	18	5
STA.	TO STA.			
RD. DIST. NO.	ALWAYS	REG. AID PROJECT		

* WILL, KANE, DU PAGE AND COOK
CONTRACT 62960



DISTRICT NO. 1

-  FUTURE HIGHWAYS
-  VARIOUS AGENCIES HIGHWAYS

REVISIONS	
NAME	DATE

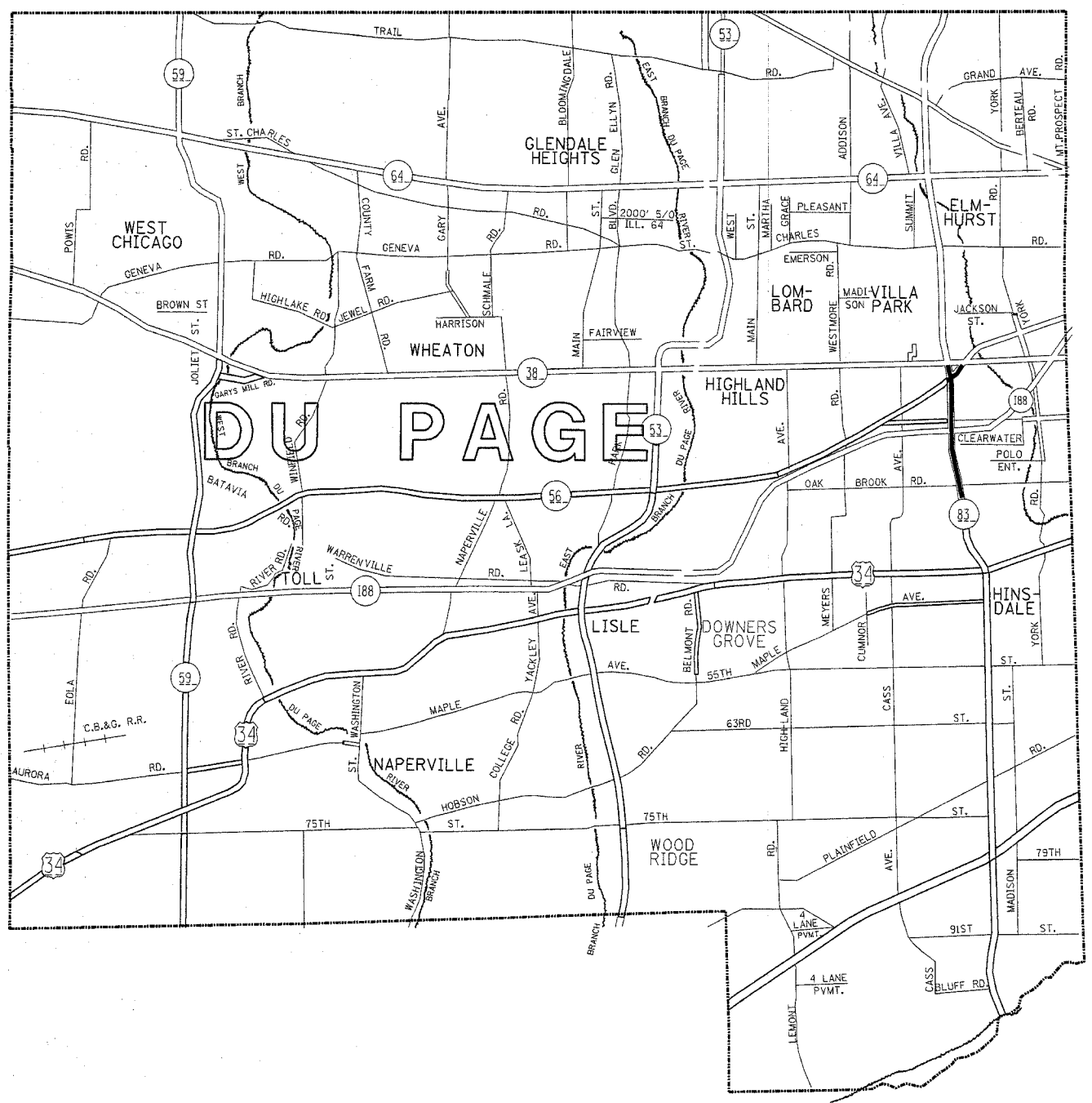
ILLINOIS DEPARTMENT OF TRANSPORTATION
SOUTHERN PART, DISTRICT 1
GUARDRAIL REPAIR
LOCATION MAP
KANE COUNTY
SOUTH OF IL. ROUTE 38

SCALE: 1"=1.5 MILES
DATE: 10/2/2006

DRAWN BY
CHECKED BY

F. & E. SHEET	SECTION	COUNTY	TOTAL SHEETS	SHEET NO.
VAR.2005-026 GRR *			16	6
STA.	TO STA.			
FED. ROAD DIST. NO.	ALMOST	FED. AID PROJECT		

* WILL, KANE, DU PAGE AND COOK
CONTRACT 62960



- DISTRICT NO. 1**
- CITY MAINTENANCE AGREEMENTS UNDER STATE JURISDICTION
 - FUTURE HIGHWAYS
 - VARIOUS AGENCIES HIGHWAYS
 - STATE HIGHWAYS & EXPRESSWAYS WITHIN STATE JURISDICTION. (EXCEPT TOLLWAYS)

REVISIONS	
NAME	DATE

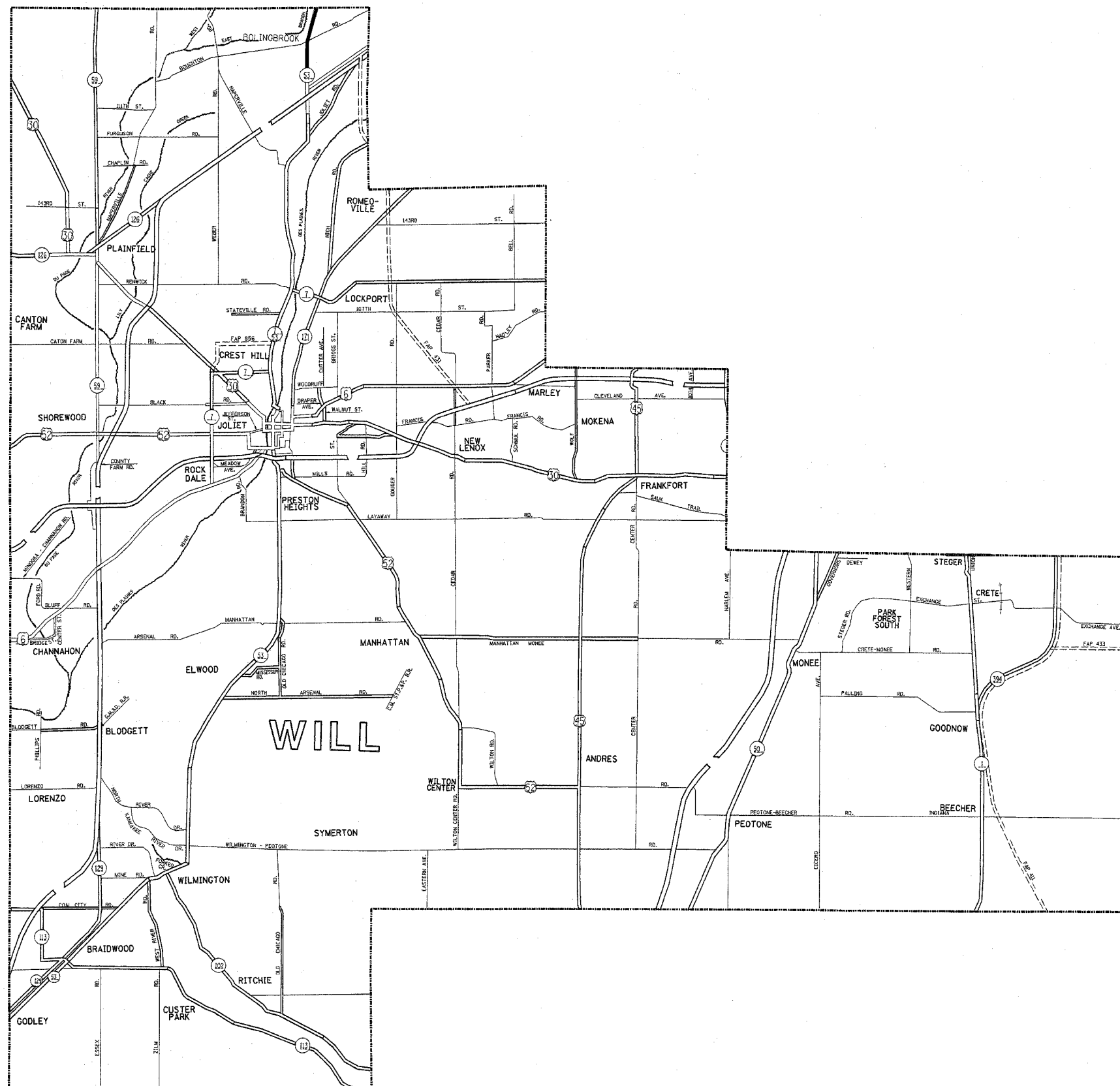
ILLINOIS DEPARTMENT OF TRANSPORTATION
 NORTHERN PART, DISTRICT 1

**GUARDRAIL REPAIR
 DU PAGE COUNTY
 SOUTH OF IL. ROUTE 38**



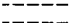
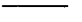
SCALE: 1"=1.5 MILES. DRAWN BY
 DATE: 10/2/2006 CHECKED BY

P.A. NO.	SECTION	COUNTY	TOTAL SHEETS	SHEET NO.
VAR. 2005-026 GRR	*	WILL, KANE, DU PAGE AND COOK	18	7
STA.	TO STA.			
FED. ROAD DIST. NO.	ILLINOIS	FED. AID PROJECT		

* WILL, KANE, DU PAGE AND COOK
CONTRACT 62960



DISTRICT NO. 1

-  STATE HIGHWAYS & EXPRESSWAYS WITHIN STATE JURISDICTION. (EXCEPT TOLLWAYS)
-  CITY MAINTENANCE AGREEMENTS UNDER STATE JURISDICTION
-  FUTURE HIGHWAYS
-  VARIOUS AGENCIES HIGHWAYS

ILLINOIS DEPARTMENT OF TRANSPORTATION
SOUTHERN PART, DISTRICT 1

GUARDRAIL REPAIR
LOCATION MAP
WILL COUNTY

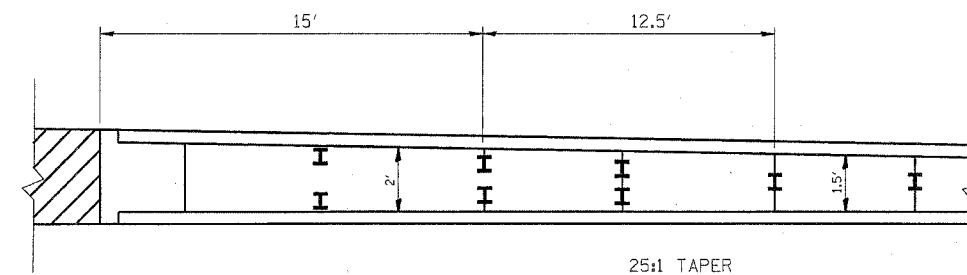
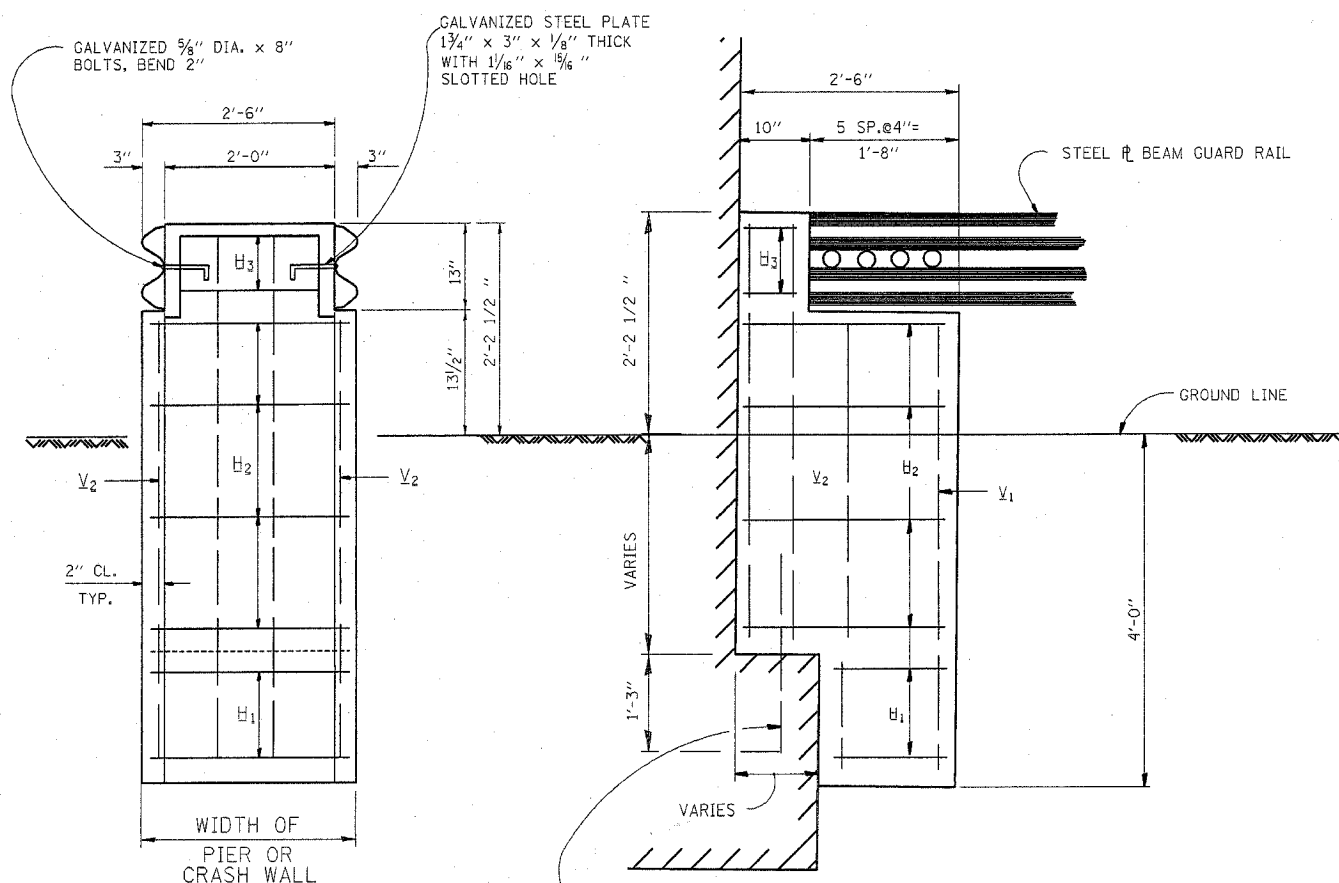
REVISIONS	
NAME	DATE

SCALE: 1"=2 MILES
DATE: 10/2/2006

DRAWN BY
CHECKED BY

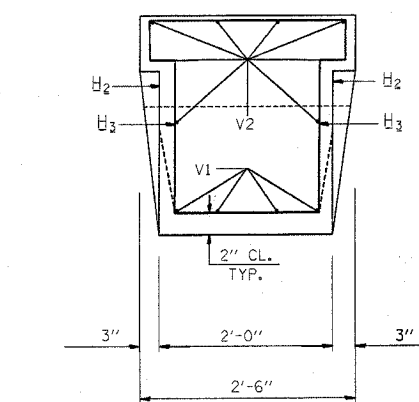
F. A. DIST.	SECTION	COUNTY	TOTAL SHEETS	SHEET NO.
VAR. 2005-026	GRR	*	18	8
STA.	TO STA.			
FED. ROAD DIST. NO.	ILLINOIS	FED. AID PROJECT		

* WILL, KANE, DU PAGE AND COOK
CONTRACT 62960

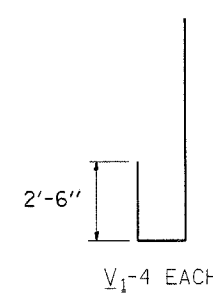
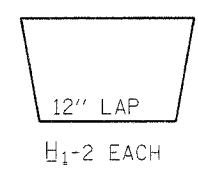
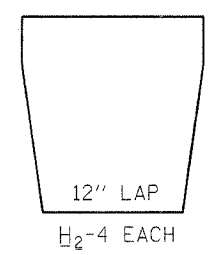
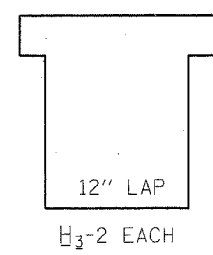


GUARD RAIL TRANSITIONS

NOTES: CLASS SI CONCRETE SHALL BE USED THROUGHOUT
REINFORCEMENT TO BE SIZE #4 UNLESS OTHERWISE
NOTED



#6 DOWEL BARS
DRILL AND GROUT ON ROW OF THREE BARS



ILLINOIS DEPARTMENT OF TRANSPORTATION

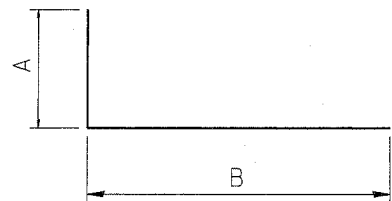
TYPICAL DETAILS FOR
STEEL PLATE BEAM GUARDRAIL
ANCHORAGE REPAIR

REVISIONS	
NAME	DATE
CREATED	10-31-88

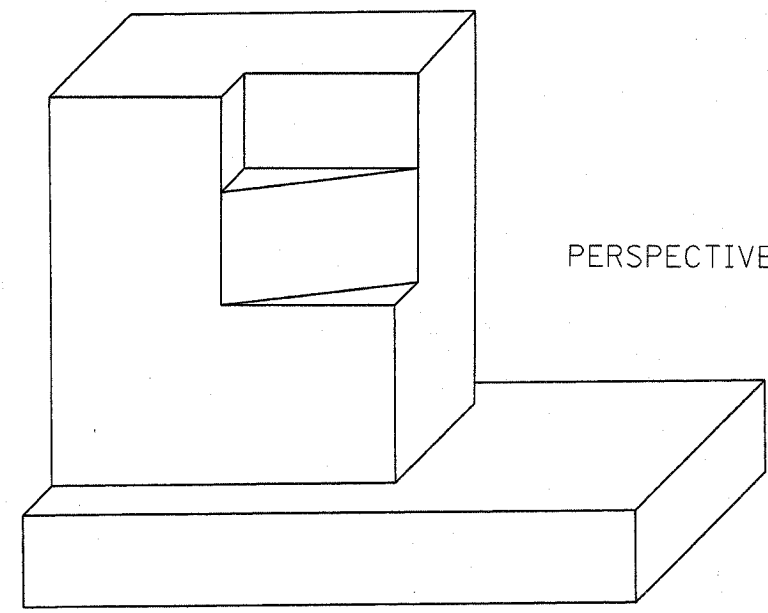
SCALE: NONE
DATE: 10/2/2006
DRAWN BY R.F.L.
CHECKED BY

F.A. ETC.	SECTION	COUNTY	TOTAL SHEETS	SHEET NO.
VAR. 2005-026 GRR	*	18	9	
STA.	TO STA.			
FED. ROAD DIST. NO.	ILLINOIS	FED. AID PROJECT		

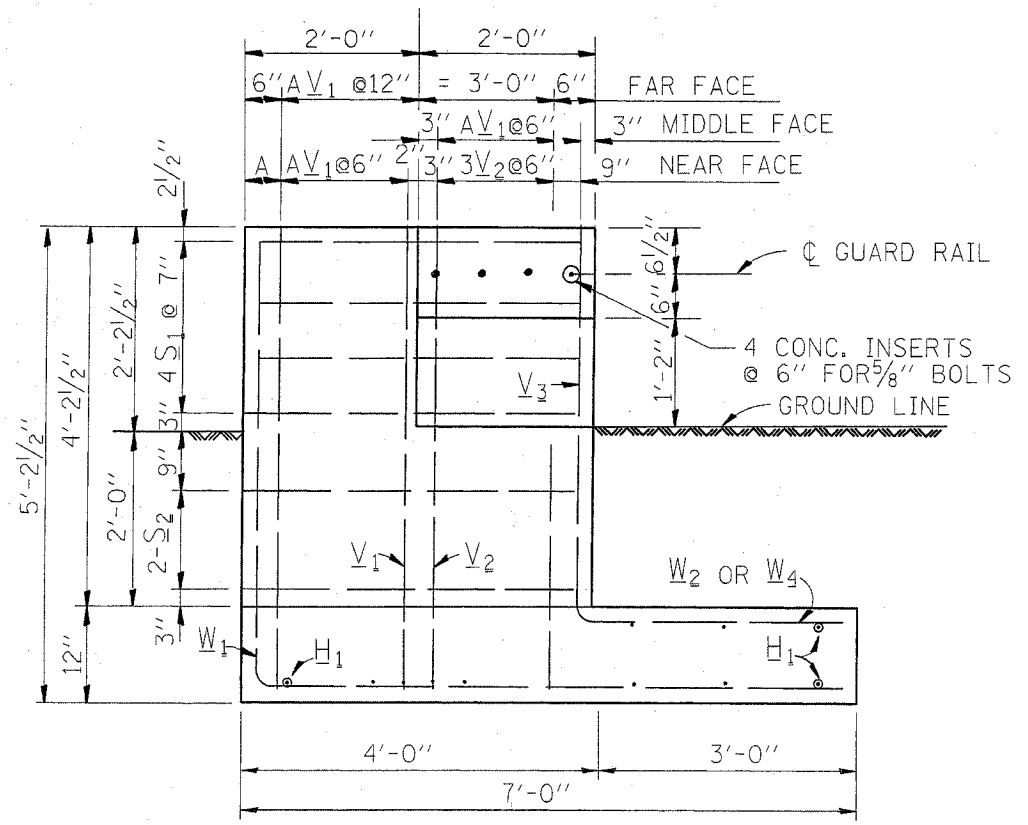
* WILL, KANE, DU PAGE AND COOK
CONTRACT 62960



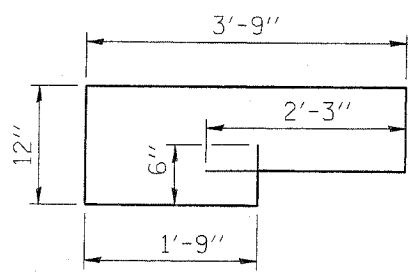
BAR	A	B	A+B
V ₁	4'-8"	6"	5'-2"
V ₂	2'-6"	6"	3'-0"
W ₁	4'-8"	6'-6"	11'-2"
W ₂	2'-0"	3'-0"	5'-0"
W ₄	4'-2"	3'-0"	7'-2"



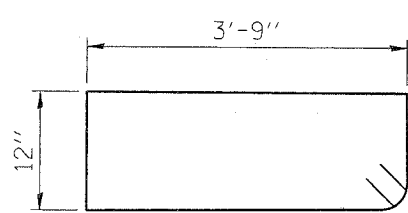
PERSPECTIVE VIEW



ELEVATION



S₁ BAR

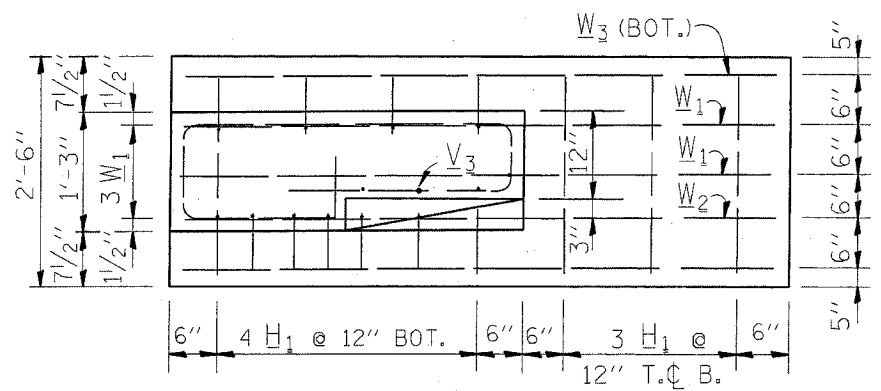


S₂ BAR

NOTES: CLASS SI CONCRETE SHALL BE USED THROUGHOUT
REINFORCEMENT TO BE SIZE #4 UNLESS OTHERWISE NOTED

BAR SCHEDULE

BAR	NO.	LENGTH
V ₁	8	5'-2"
V ₂	3	3'-0"
V ₃	4	3'-0"
W ₁	3	11'-2"
W ₂	1	5'-0"
W ₃	2	6'-6"
W ₄	2	7'-2"
S ₁	4	10'-0"
S ₂	2	10'-0"
H ₁	1	2'-3"



FOOTING PLAN

THIS SHEET IS FOR INFORMATION ONLY

REVISIONS	
NAME	DATE
CREATED	10-31-88

ILLINOIS DEPARTMENT OF TRANSPORTATION

**TYPICAL DETAIL FOR
GUARDRAIL ANCHOR BLOCK
REPAIR**

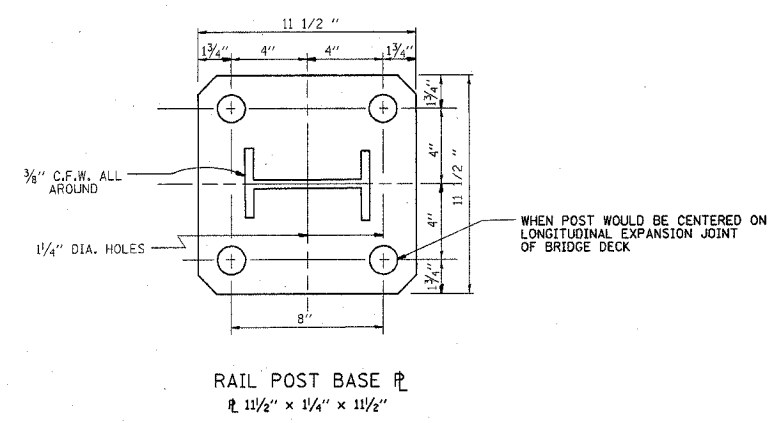
SCALE: NONE
DATE: 10/2/2006

DRAWN BY: R.F.L.
CHECKED BY:

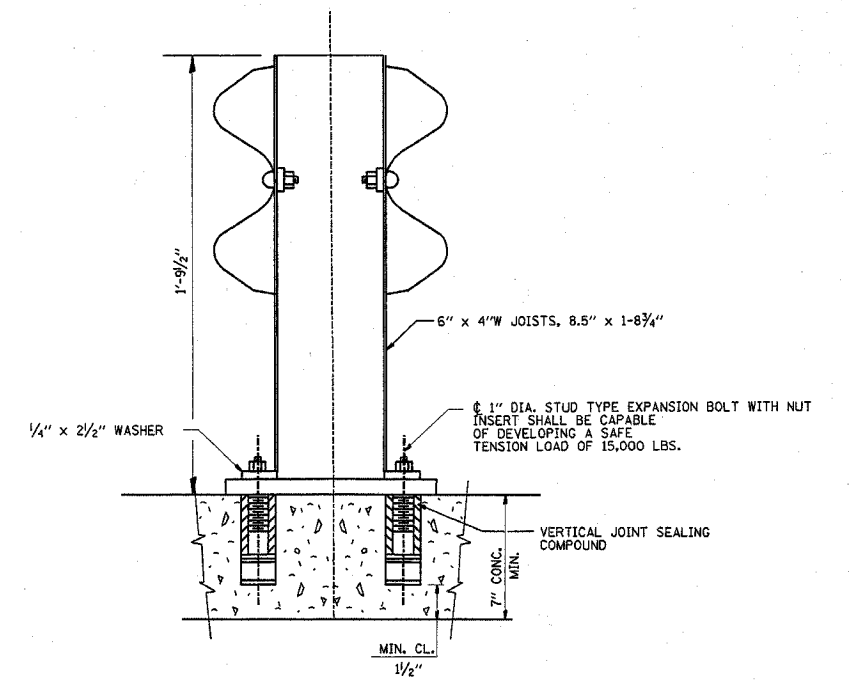
F. & M. NO.	SECTION	COUNTY	TOTAL SHEETS	SHEET NO.
VAR. 2005-026	GRR	*	18	10
STA.	TO STA.			
FED. ROAD DIST. NO.	ELLINGS	FED. AID PROJECT		

* WILL, KANE, DU PAGE AND COOK
CONTRACT 62960

NOTE:
 FOR DETAILS OF RAIL ELEMENTS, RAIL SPLICING, NUT, BOLT AND SIDE VIEW OF RAIL, SEE STANDARD 630001
 ALL WELDS SHALL BE GROUND SMOOTH
 POSTS SHALL BE CUT AND WELDED TO THE BASE PLATE SO THAT THE POST WILL BE PLUMB WHEN ERECTED.
 TWO PERCENT (2%) OF ALL ANCHOR BOLTS SHALL BE TEST LOADED IN PLACE, MINIMUM TEST LOAD=8 KIPS. IF ONE ANCHOR BOLT FAILS DURING THE TEST, TWO OTHER ANCHOR BOLTS SHALL BE TESTED. TESTING EQUIPMENT SHALL BE BOLT COMPANIES.
 PROVIDE 1/8" AND 2/16" GALVANIZED SHIMS FOR 25% OF THE POSTS.



NOTE:
 ALL WELDS SHALL BE GROUND SMOOTH. POSTS SHALL BE CUT AND WELDED TO THE TO THE BASE PLATE SO THAT THE POSTS WILL BE PLUMB WHEN ERECTED.



REVISIONS	
NAME	DATE
CREATED	10-31-88

ILLINOIS DEPARTMENT OF TRANSPORTATION

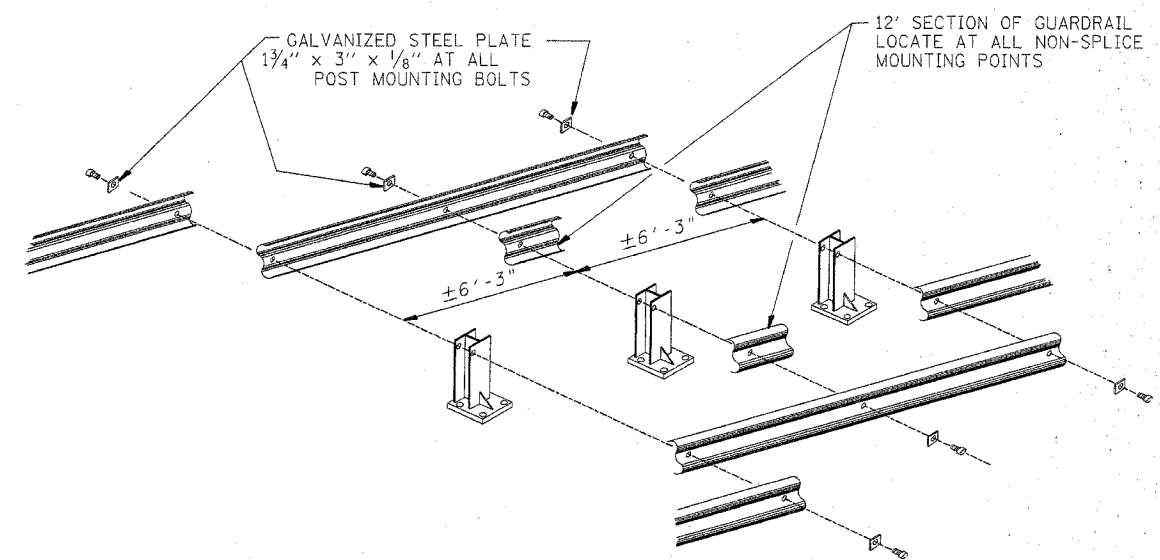
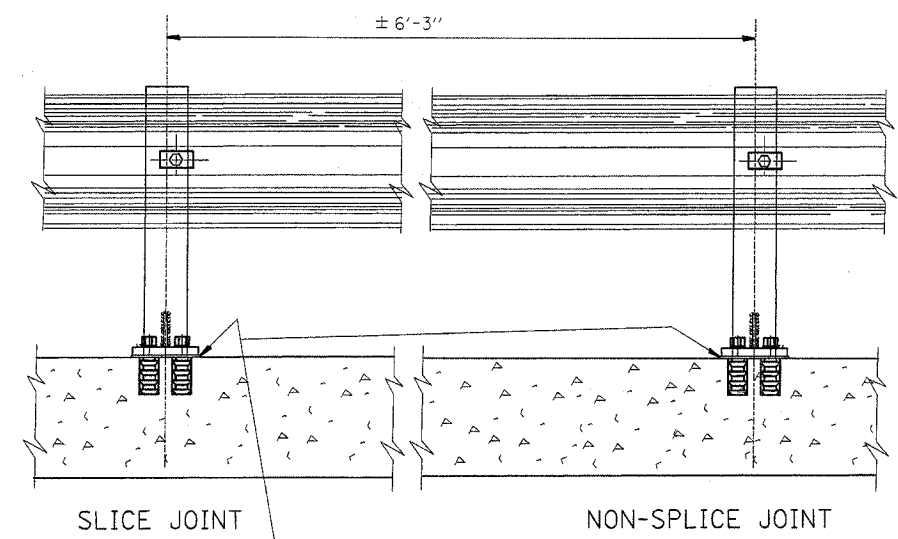
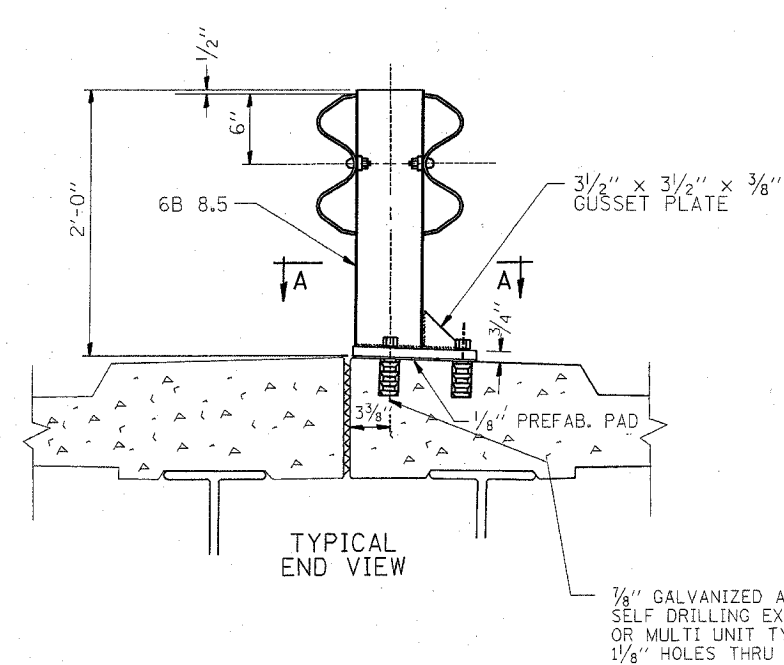
ANCHOR DETAIL FOR STEEL PLATE BEAM GUARD RAIL ON CONCRETE

SCALE: NONE
 DATE: 10-31-88

DRAWN BY R.F.L.
 CHECKED BY

P.A. NO.	SECTION	COUNTY	TOTAL SHEETS	SHEET NO.
VAR. 2005-026 GRR	*		18	11
STA.	TO STA.			
FED. ROAD DIST. NO.	BLDG.	FED. AID PROJECT		

* WILL, KANE, DU PAGE AND COOK
CONTRACT 62960

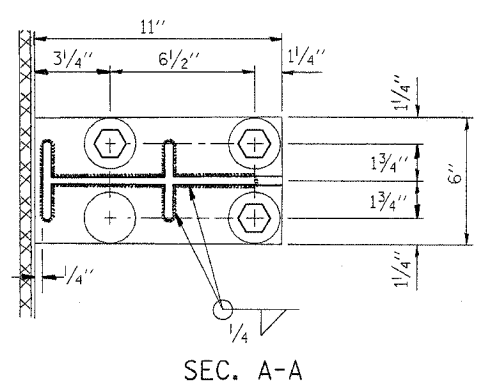


7/8" GALVANIZED ANCHOR BOLTS AND SELF DRILLING EXPANSION SHELLS OR MULTI UNIT TYPE ANCHORS
 1/8" HOLES THRU BASE PLATE

SEAL PERIMETER OF BASE OF POST TO MEDIAN WITH TWO COMPONENT NON-STAINING GRAY SEALING COMPOUND WITH POLYSULFIDE LIQUID POLYMERS - GUN GRADE WITH PRIMER

NOTE:
 DIAMOND TIPPED DRILL SHALL BE USED TO DRILL THRU REINFORCEMENT BARS

NOTE:
 POSTS SHALL BE HOT DIPPED GALVANIZED AFTER FABRICATION IN ACCORDANCE WITH ASTM DESIGNATIONS A-123 AND A-385.
 TWO PERCENT (2%) OF ALL ANCHOR BOLTS SHALL BE TEST LOADED IN PLACE. MIN. TEST LOAD = 8 KIPS.
 ALL BOLTS, NUTS AND WASHERS SHALL BE GALVANIZED IN ACCORDANCE WITH ASTM DESIGNATION A-153.
 FOR MATERIAL COMPOSITION OF PREFABRICATED PAD, SEE ARTICLE 54.9(F), (BEARING AND ANCHORAGE), OF THE STANDARD SPECIFICATIONS.
 PROVIDE 1-1/8" AND 2-1/16" GALVANIZED STEEL SHIMS FOR 25% OF THE POSTS.
 IF ONE ANCHOR BOLT FAILS DURING TEST, TWO OTHER ANCHOR BOLTS SHALL BE TESTED. TESTING EQUIPMENT CAN BE OBTAINED FROM BOLT COMPANIES.



SEC. A-A

THIS SHEET IS FOR INFORMATION ONLY

REVISIONS	
NAME	DATE
CREATED	10-31-88

ILLINOIS DEPARTMENT OF TRANSPORTATION

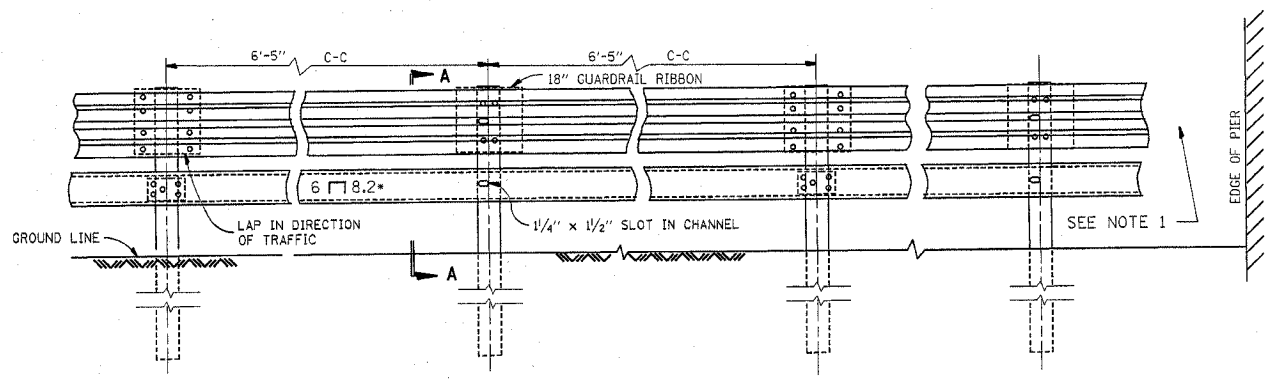
TYPICAL DETAIL FOR CENTER LONGITUDINAL JOINT GUARDRAIL JOINT

SCALE: NONE
 DATE: 10/2/2006

DRAWN BY: R.F.L.
 CHECKED BY:

P. L. RILEY	SECTION	COUNTY	TOTAL SHEETS	SHEET NO.
VAR. 2005-026	GRR	*	18	12
STA.	TO STA.			
FED. ROAD DIST. NO.	RAILROAD	FED. AID PROJECT		

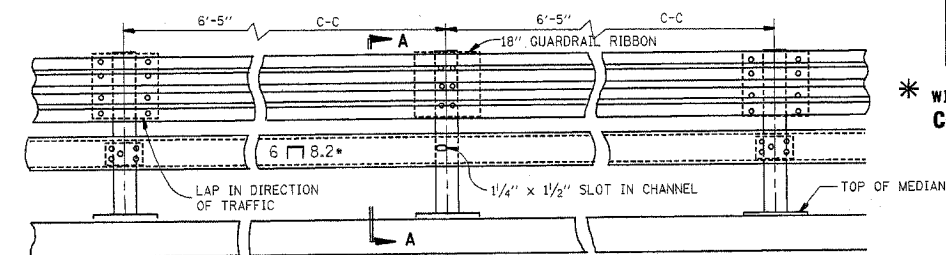
* WILL. KANE, DU PAGE AND COOK
CONTRACT 62960



ELEVATION

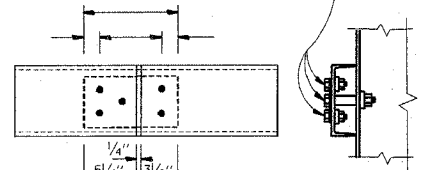
DETAIL OF END SECTION

NOTE 1:
FOR DETAILS OF GUARDRAIL END ANCHORAGE
AT PIERS, SEE SHEET NO. ___

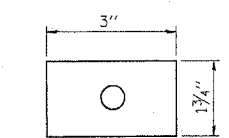


ELEVATION

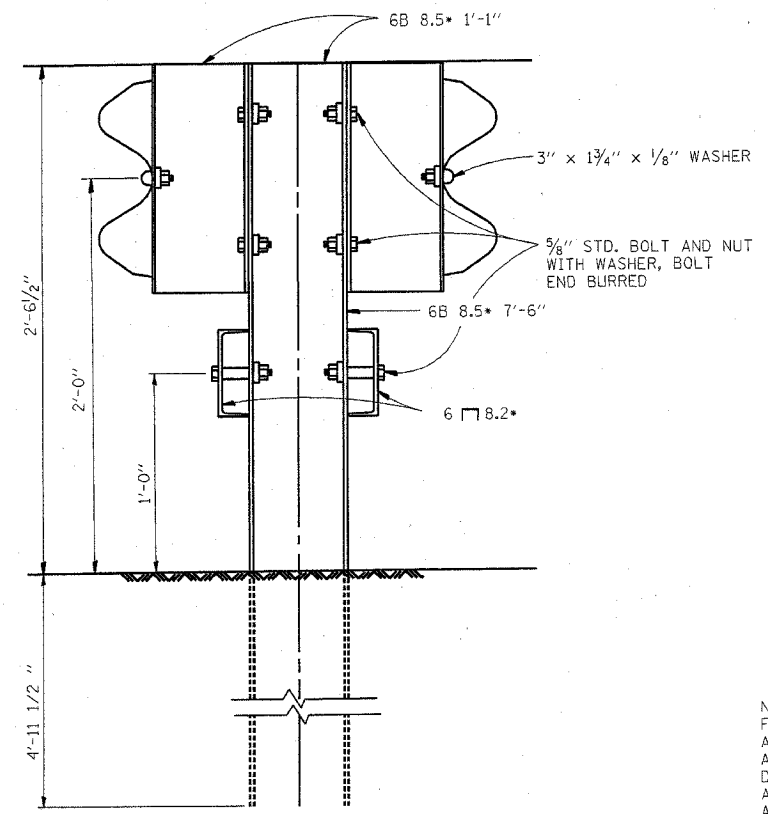
5/8" STD. BOLT AND NUT
WITH WASHER, BOLT
END BURRED



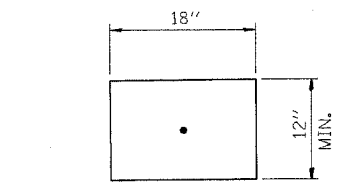
CHANNEL SPLICE
PLATE 8 3/4" x 4 1/2" x 1/4"



WASHER
PLATE 3" x 1 3/4" x 1/8"

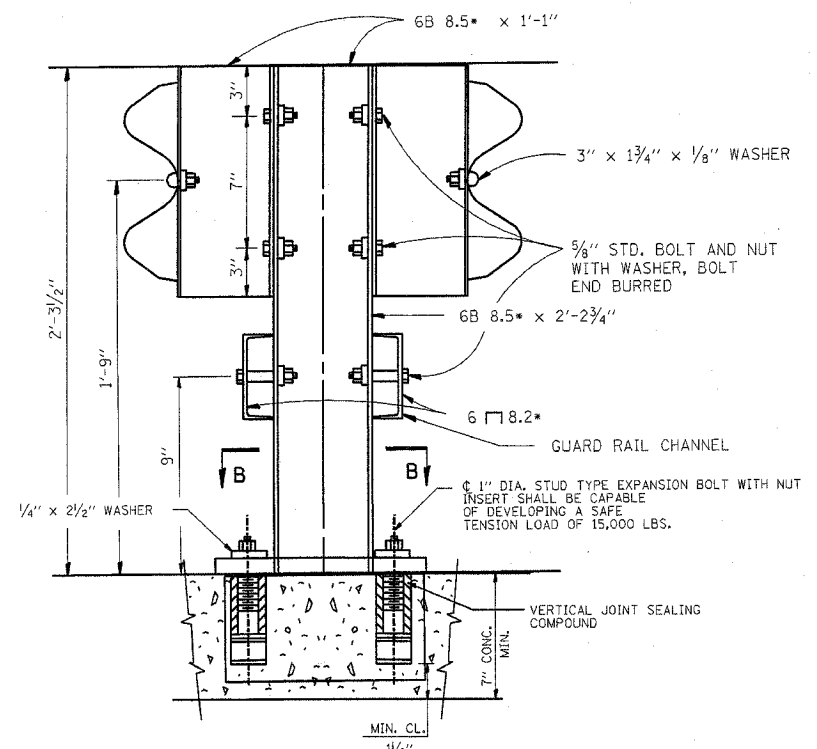


SECTION A-A



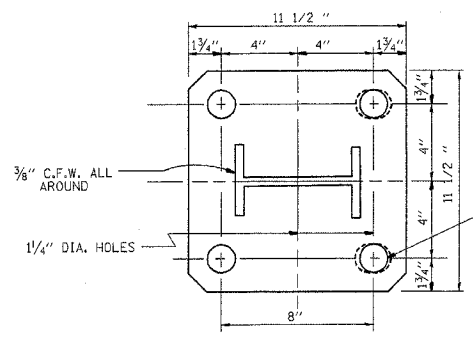
18" GUARDRAIL ELEMENT SPLICE

NOTE:
FOR DETAIL OF RAIL ELEMENT, RAIL SPLICING, BOLT,
AND NUT, SEE STATE STANDARD 630001.
A 3/8" x 3" x 1/8" STEEL PLATE WASHER AS SHOWN ON THIS
DRAWING SHALL BE PLACED BETWEEN THE BOLT HEAD
AND THE GUARDRAIL RIBBON AT ALL MOUNTING POINTS.
AN 18" PIECE OF GUARDRAIL RIBBON SHALL BE INSERTED
BETWEEN THE CONTINUOUS RIBBON AND THE POST AT
NON-SLICE MOUNTING POINTS.
RAIL, CHANNELS, POSTS, BASE PLATES, FASTENINGS,
AND ALL OTHER EXPOSED ACCESSORIES SHALL BE
GALVANIZED.



SECTION A-A
ANCHORAGE DETAIL

NOTE:
ALL WELDS SHALL BE GROUND SMOOTH.
POSTS SHALL BE CUT AND WELDED TO THE
BASE PLATE SO THAT THE POSTS WILL BE
PLUMB WHEN ERECTED.



RAIL POST BASE PLATE
R. 11 1/2" x 1 1/4" x 1 1/2"

SECTION B-B

REVISIONS	
NAME	DATE

ILLINOIS DEPARTMENT OF TRANSPORTATION
STEEL PLATE BEAM GUARDRAIL
SPECIAL

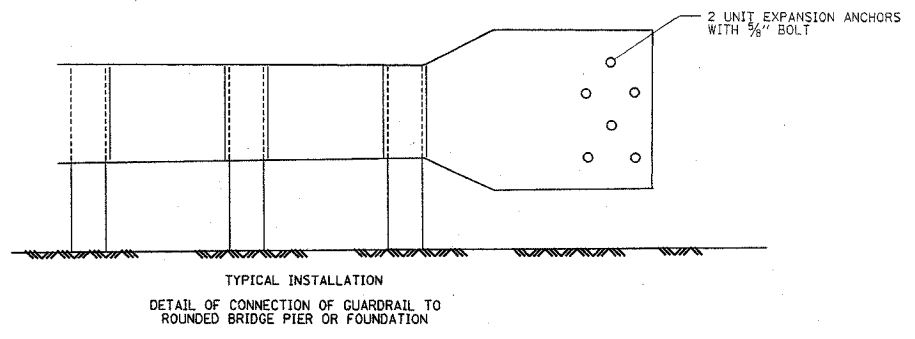
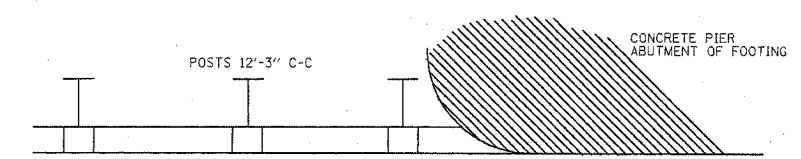
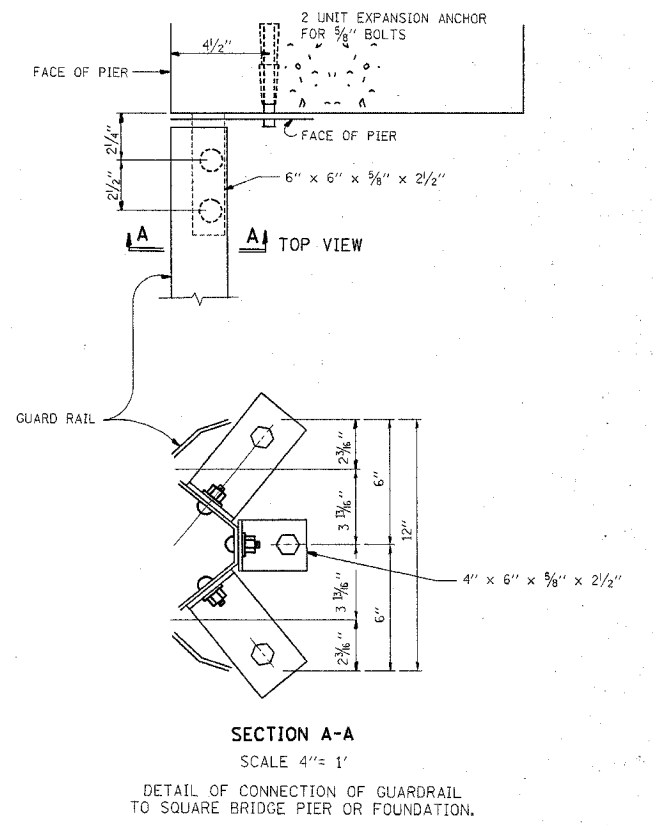
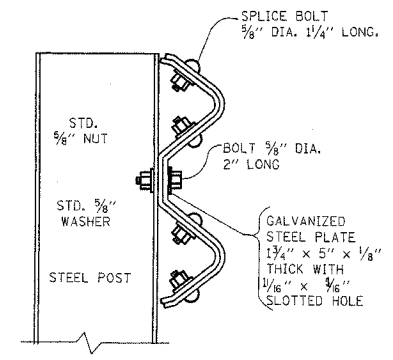
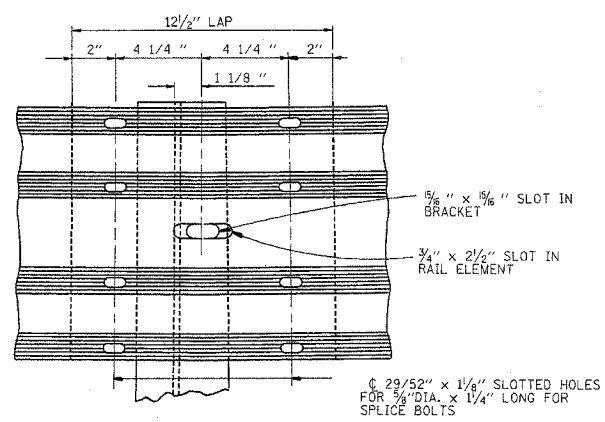
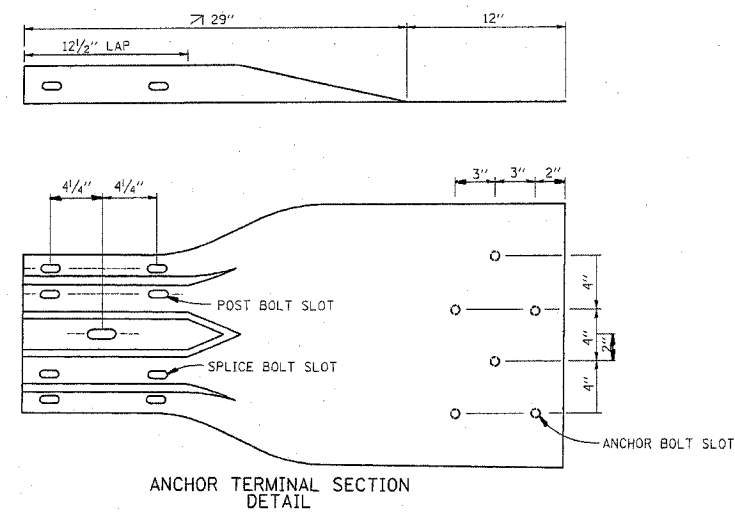
SCALE: NONE
DATE: 10/2/2006

DRAWN BY R.F.L.
CHECKED BY

THIS SHEET IS FOR INFORMATION ONLY

F. L. RFL.	SECTION	COUNTY	TOTAL SHEETS	SHEET NO.
VAR. 2005-026	GRR	*	18	13
STA.	TO STA.			
FED. ROAD DIST. NO.	ILLINOIS	FED. AID PROJECT		

* WILL, KANE, DU PAGE AND COOK
CONTRACT 62960



THIS SHEET IS FOR INFORMATION ONLY

REVISIONS	
NAME	DATE
CREATED	10-31-88

ILLINOIS DEPARTMENT OF TRANSPORTATION

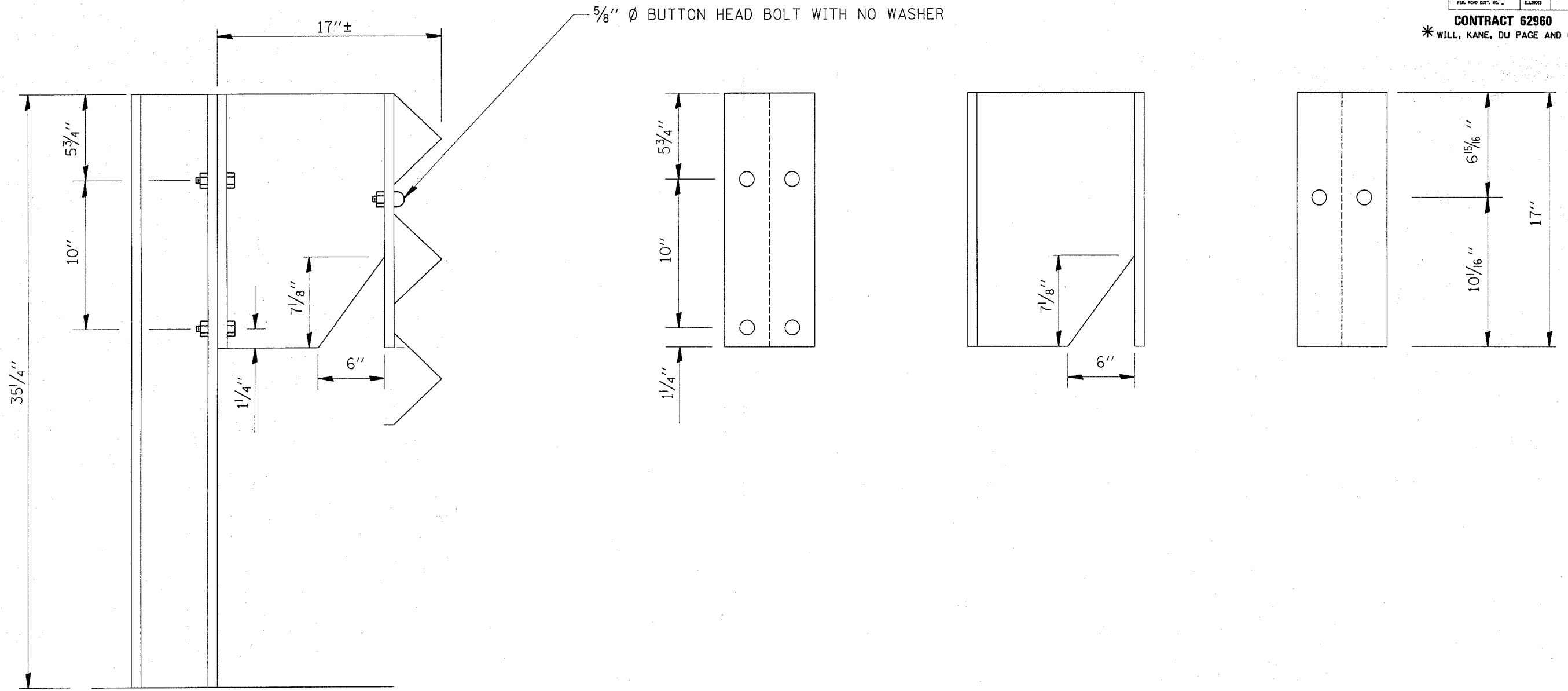
DETAIL OF GUARDRAIL SUPPORT AND END ANCHORAGE

SCALE: NONE
DATE: 10/2/2006

DRAWN BY R.F.L.
CHECKED BY

P.A. NO.	SECTION	COUNTY	TOTAL SHEETS	SHEET NO.
VAR. 2005-026 GRR		*	18	14
STA.	TO STA.			
FED. ROAD DIST. NO.	ILLINOIS	FED. AID PROJECT		

CONTRACT 62960
 * WILL, KANE, DU PAGE AND COOK



VI-TBC-N
 10/2/2006
 c:\projects\m106188\m06188bb.m32

REVISIONS	
NAME	DATE

ILLINOIS DEPARTMENT OF TRANSPORTATION

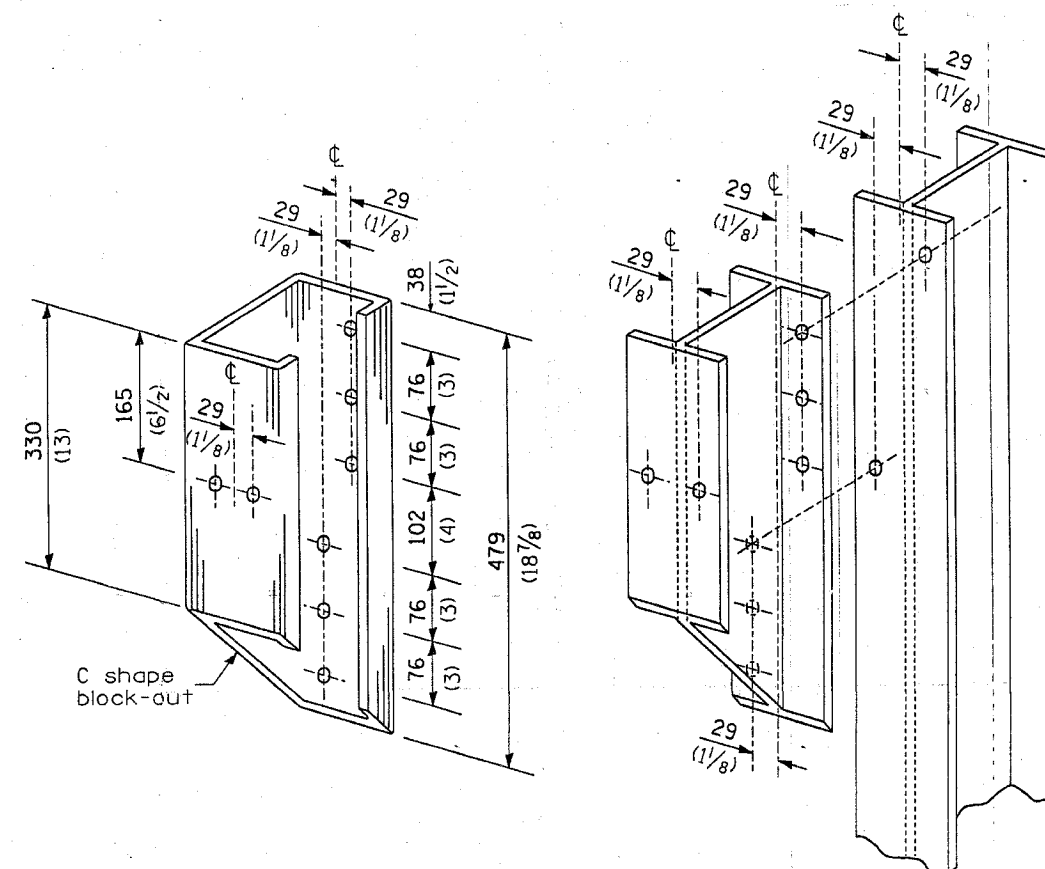
**DETAIL
 THREE BEAM GUARDRAIL
 WITH MODIFIED OFFSET BLOCK**

SCALE: NONE
 DATE: 10/2/2006

DRAWN BY
 CHECKED BY

F. A. DIST.	SECTION	COUNTY	TOTAL SHEETS	SHEET NO.
VHR	203-026 C&G	VAE	18	15
STA.	TO STA.			
FED. ROAD DIST. NO. 7	ILLINOIS	FED. AID PROJECT		

Contract 62960



STEEL BLOCK-OUT AND
STEEL POST DETAILS

REVISIONS	
NAME	DATE

ILLINOIS DEPARTMENT OF TRANSPORTATION

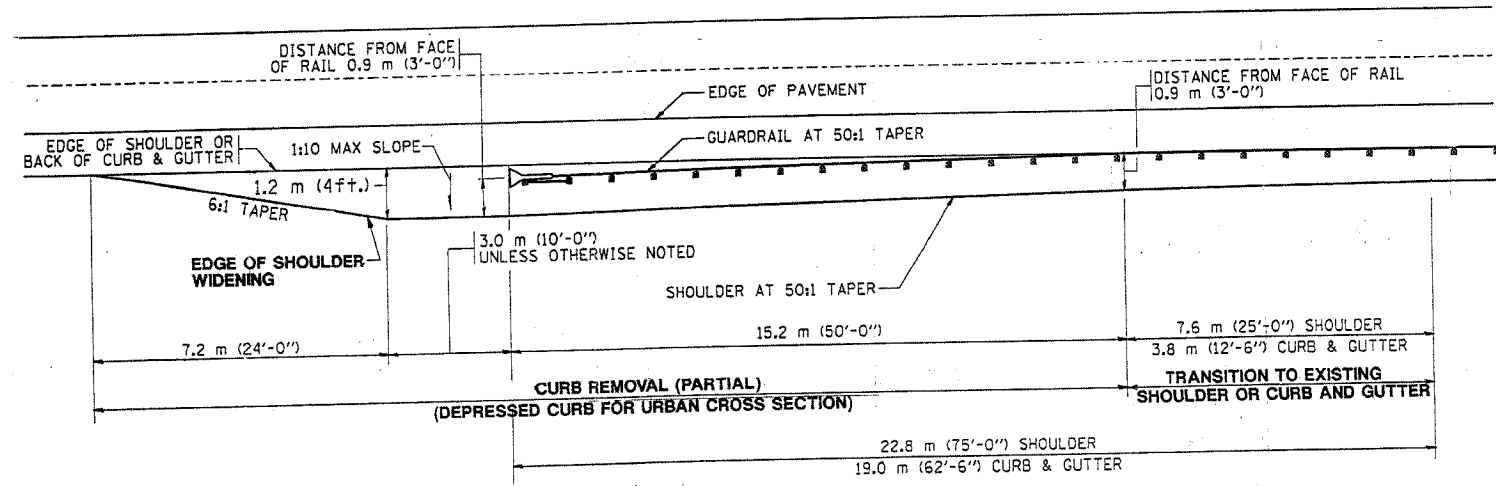
**STEEL PLATE BEAM GUARDRAIL
STEEL BLOCK-OUT DETAIL**

SCALE: VERT.
HORIZ.
DATE

DRAWN BY
DESIGNED BY
CHECKED BY

F. A. DATE	SECTION	COUNTY	TOTAL SHEETS	SHEET NO.
VAR	VARIOUS	VARIOUS	18	16
STA.	TO STA.			
FED. ROAD DIST. NO. 7	ILLINOIS	FED. AID PROJECT		

Contract 02960



NOTE: SHOULDER WIDENING SHALL BE IN ACCORDANCE WITH STATE STANDARD 630301

REVISIONS	
NAME	DATE

ILLINOIS DEPARTMENT OF TRANSPORTATION
CURB REMOVAL (PARTIAL) FOR TRAFFIC BARRIER TERMINAL, TYPE 1 SPECIAL
 SCALE: VERT. _____
 HORIZ. _____
 DATE _____
 DRAWN BY _____
 DESIGNED BY _____
 CHECKED BY _____

STATE OF ILLINOIS
DEPARTMENT OF TRANSPORTATION

ROUTE NO.	SECTION	COUNTY	DATE	SHEET	SHEET NO.
VARIOUS		VAR.	18	17	
FED. ROAD DIST. NO. 7	ILLINOIS	FED. AID PROJECT-			SHEETS

Contract # 62960

NOTES

Hollow structural sections shall conform to the requirements of ASTM designation A 500, Grade B, Structural Steel Tubing and shall meet the longitudinal CVN requirements of 15 ft-lbs at 0°F.

All other steel shapes and plates shall conform to the requirements of AASHTO M 270 Grade 36 except posts shall conform to AASHTO M 270, Grade 50.

Bolts, cap screws and nuts shall conform to the requirements of ASTM designation A 307 except that threaded rods, nuts and washers shall conform to AASHTO M 164.

All bolts, nuts, cap screws, washers and lock washers shall be galvanized according to AASHTO M 232.

All posts, railing, rail splices and anchor rods shall be galvanized after shop fabrication according to AASHTO M 111 and ASTM A 385. Galvanized rail shall not be painted.

Railing shall be according to Section 509 of the Standard Specifications, except as noted, and will be paid for at the contract unit price per foot for Steel Bridge Rail.

All field drilled holes shall be coated with an approved zinc rich paint before erection.

Posts shall not be located closer than 1'-3" to an existing bridge expansion joint or end of bridge.

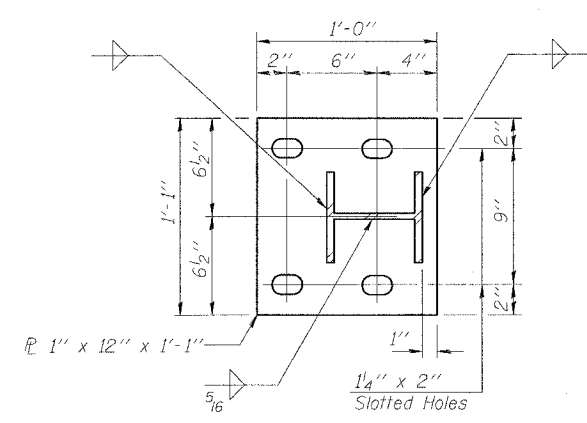
Steel Bridge Rail expansion joint shall be provided between any two (2) posts which span a bridge expansion joint. Bolts located at expansion joint shall be provided with locknuts and shall be tightened only to a point that will allow railing movement.

Provide one 1/8" and two 1/16" steel shims for 25% of the posts. Shims shall be similar to base plates in size and holes.

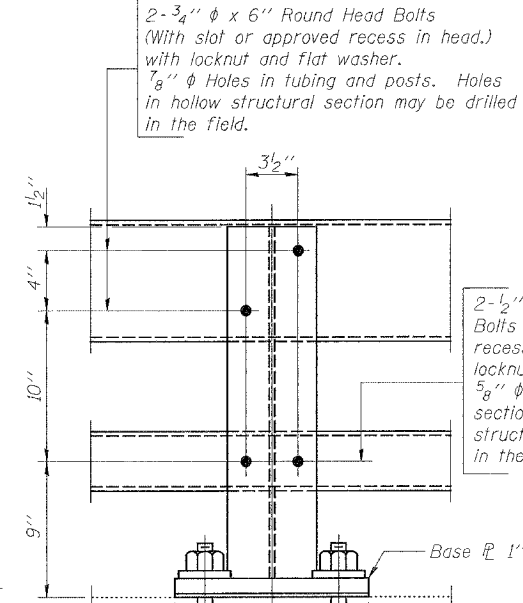
Expansion joint width shall be "D" at 50° F and shall be adjusted for other temperatures according to Article 503.10(c) of the Standard Specifications.

The Contractor shall use the capsule or the adhesive cartridge type anchor rods that have been previously tested and given a prior approval by the Department. The Contractor shall install these anchor rods in pre-drilled holes according to the manufacturer's recommendations and procedures. The capsule or the adhesive cartridge shall be sealed with pre-measured amounts of the adhesive chemical.

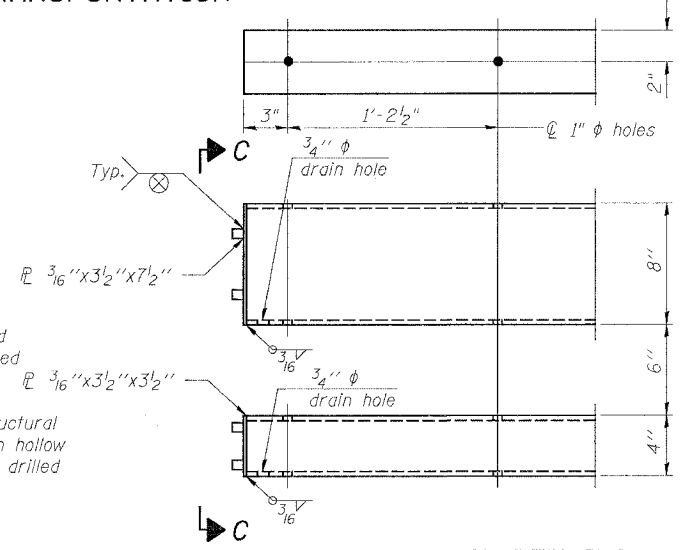
Nuts for 1" φ threaded anchor rods connecting the base plate to the concrete shall be tightened to a snug fit and given an additional 1/8 turn.



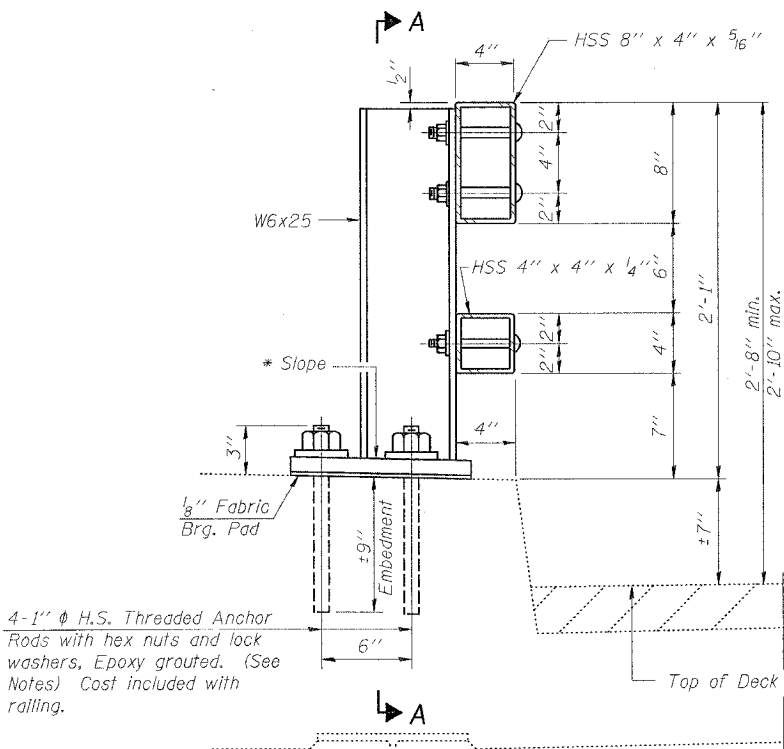
BASE PLATE DETAIL



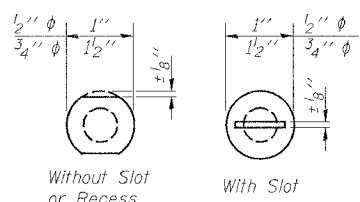
SECTION A-A



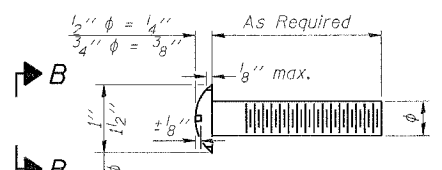
END OF RAIL DETAILS



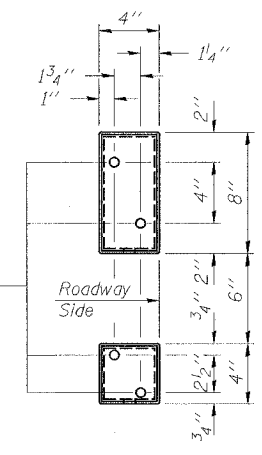
SECTION AT RAIL POST



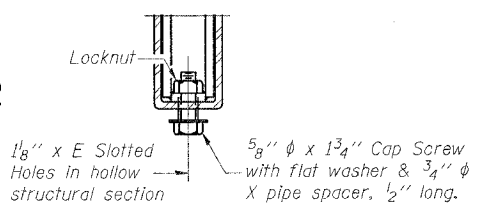
VIEW B-B



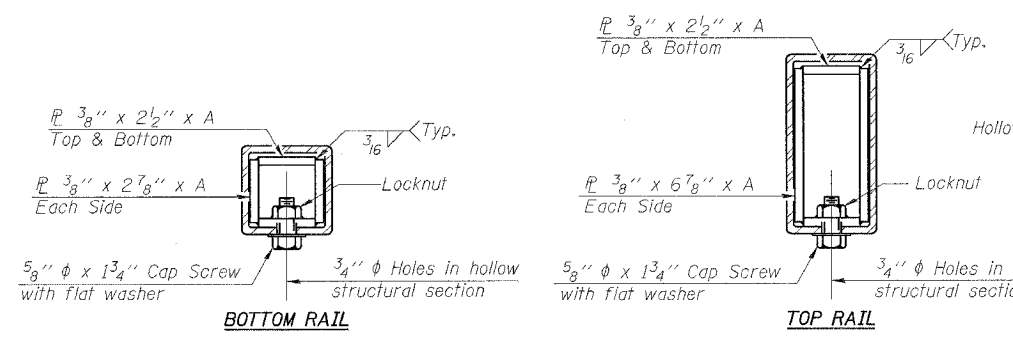
DETAIL OF 1/2" φ & 3/4" φ ROUND HEAD BOLTS



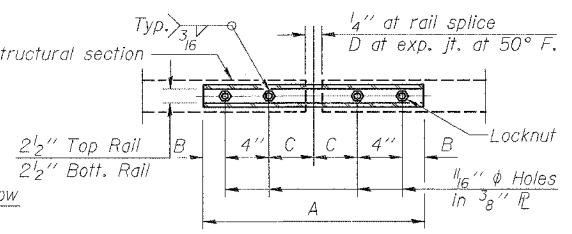
VIEW C-C



RAIL SPLICE CONNECTION AT EXPANSION JT.



SECTIONS AT RAIL SPLICE



PLAN-BOTT. SPLICE TYPICAL

BILL OF MATERIAL

Item	Unit	Quantity
Steel Bridge Rail	Foot	

SPLICE DIMENSIONS

T	D	A	B	C	E
≤ 4"	2 1/2"	1'-8"	2"	4"	2 1/2"
> 4" ≤ 6 1/2"	3 3/4"	2'-0"	2 1/2"	5 1/2"	3 1/2"
> 6 1/2" ≤ 9"	5"	2'-4"	3 1/2"	6 1/2"	9"
> 9" ≤ 13"	7"	2'-10"	4 1/2"	8 1/2"	11"
Rail Splice	1/4"	1'-8"	2"	4"	

T = Total movement at expansion joint as shown on the design plans.

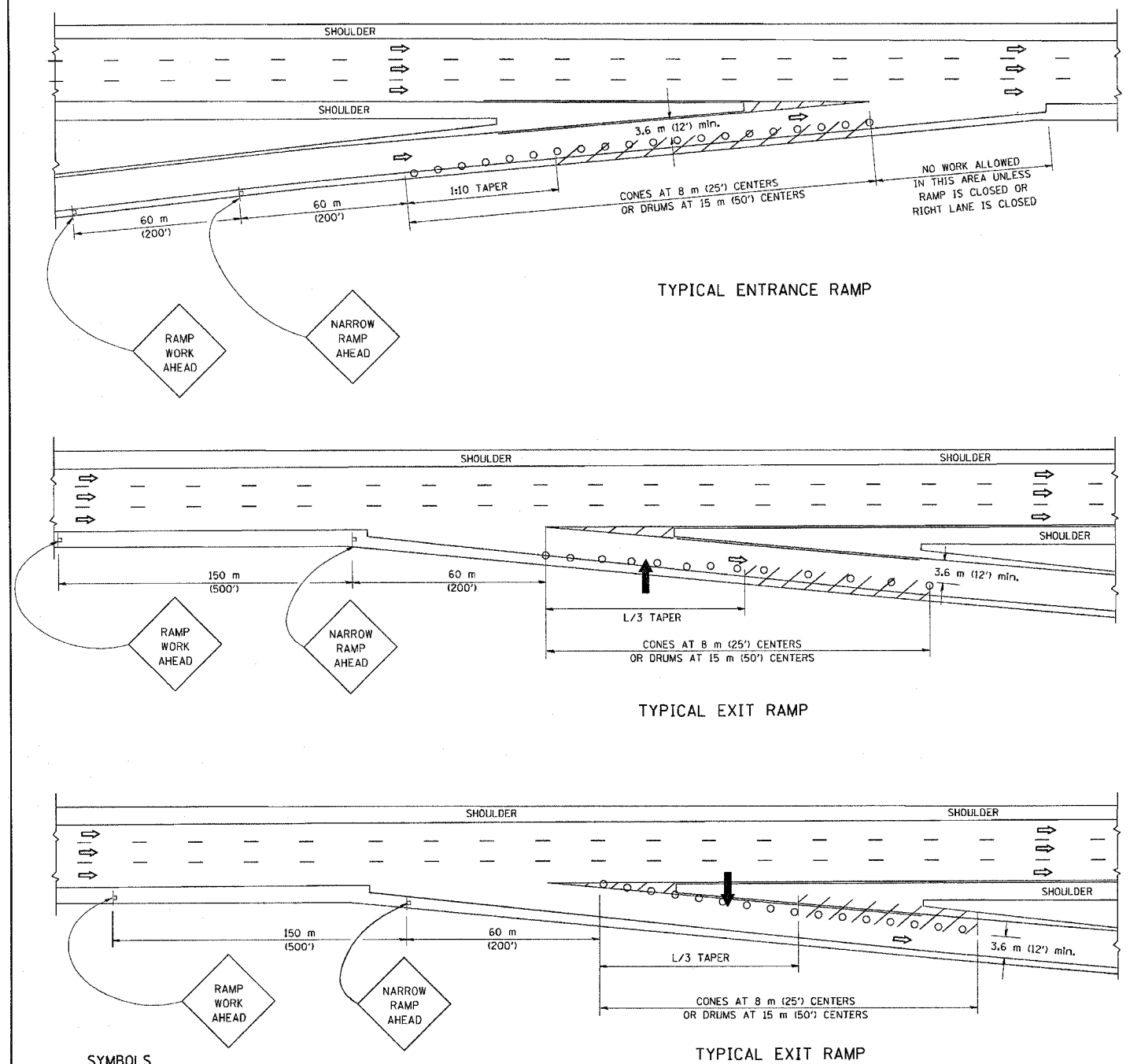
STEEL BRIDGE RAIL CURB MOUNTED (2399)

DESIGNED -	200
CHECKED -	EXAMINED
DRAWN -	PASSED
CHECKED -	ENGINEER OF BRIDGE DESIGN
	ENGINEER OF BRIDGES AND STRUCTURES

(6'-3" Maximum Post Spacing)

F.A. RTE.	SECTION	COUNTY	TOTAL SHEETS	SHEET NO.
Var	2005-04-GLR	VAR	18	18
STA.	TO STA.			
FED. ROAD DIST. NO.	ILLINOIS	FED. AID PROJECT		

PARTIAL RAMP CLOSURE DETAILS



SYMBOLS

- ARROWBOARD
- WORK AREA
- SIGN ON PORTABLE OR PERMANENT SUPPORT
- FLAGGER WITH CONTROL SIGN
- DRUM WITH MONO-DIRECTIONAL STEADY BURNING LIGHT
- CONES - 700 (28) IN HEIGHT

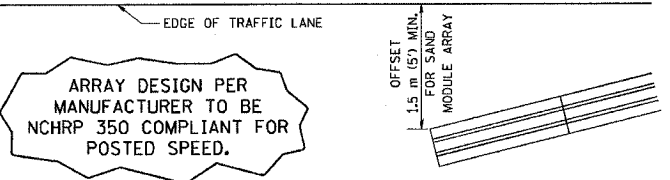
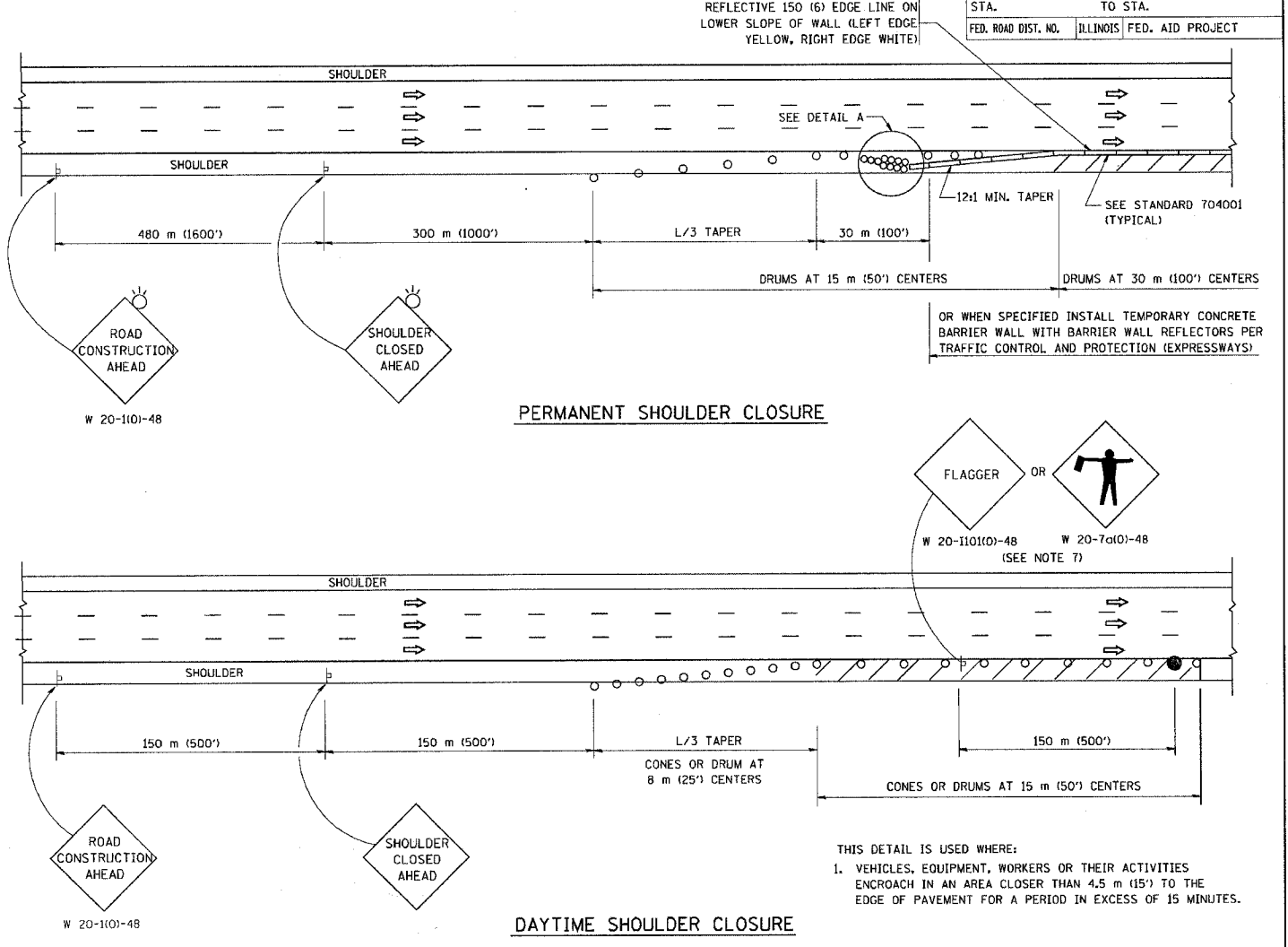
GENERAL NOTES

1. THE "L" DISTANCE EQUALS:

SPEED LIMIT	FORMULAS
80 km/h (45 mph) OR GREATER:	METRIC ENGLISH
	$L=0.65(W/S)$ $L=(W/S)$

W = WIDTH OF OFFSET IN METERS (FEET)
S = NORMAL POSTED SPEED KM/H (MPH)
2. PLASTIC DRUMS WITH HIGH PERFORMANCE REFLECTIVE SHEETING AND STEADY BURNING LIGHTS ARE REQUIRED FOR ALL NIGHTTIME CLOSURES.
3. ALL SIGNS SHALL BE POST MOUNTED IF THE CLOSURE TIME EXCEEDS FOUR DAYS.
4. FLASHING LIGHTS SHALL BE USED DURING THE HOURS OF DARKNESS AND SHALL BE INSTALLED ABOVE THE FIRST TWO SETS OF SIGNS.

SHOULDER CLOSURE DETAILS



DETAIL "A" IMPACT ATTENUATOR, TEMPORARY (SEE NOTE 5)

ALL DIMENSIONS ARE IN MILLIMETERS (INCHES) UNLESS OTHERWISE SHOWN.

REVISIONS	
NAME	DATE
DWS	11/96
JAF	12/02
NCHRP 350	04/03
JAF	2/06

ILLINOIS DEPARTMENT OF TRANSPORTATION

TRAFFIC CONTROL DETAILS FOR FREEWAY SHOULDER CLOSURES PARTIAL RAMP CLOSURES

DESIGNED BY: DWS

DRAWN BY

CHECKED BY

SCALE: NONE

DATE: 3/1/2006

TC-17

FILE NAME = K:\nchrdwg\17.dgn
FILE DATE = 3/1/2006
PLOT SCALE = 50:8000 / 1" = 100'