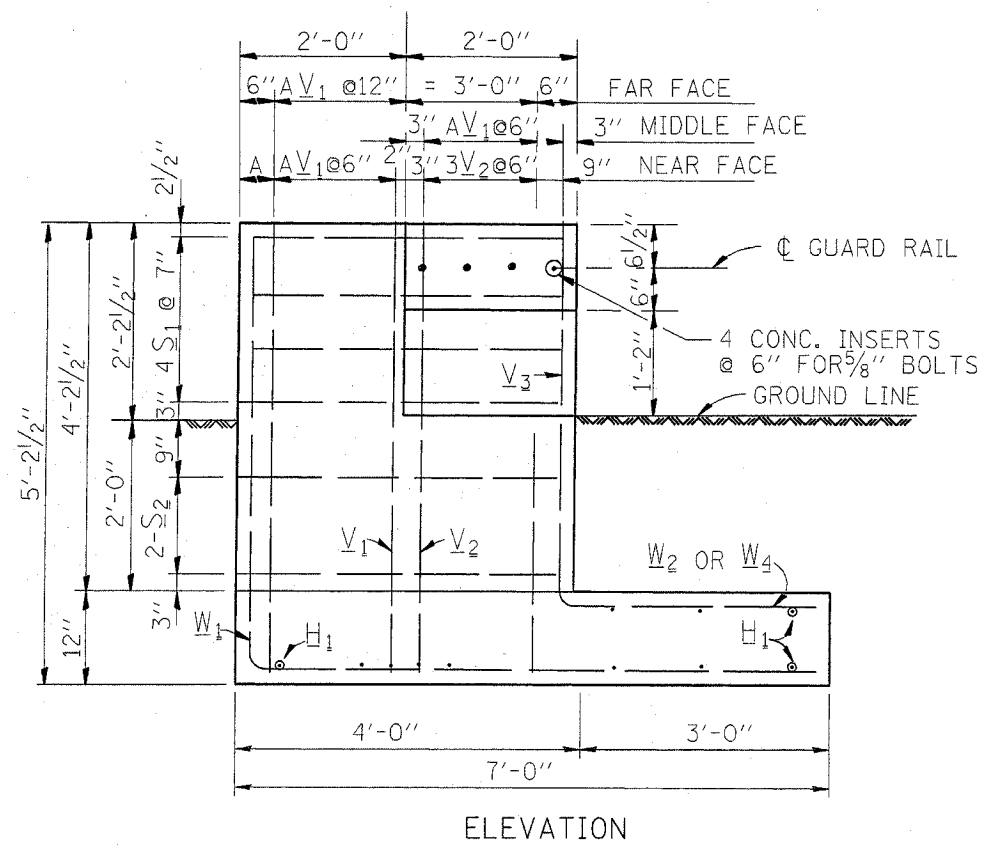
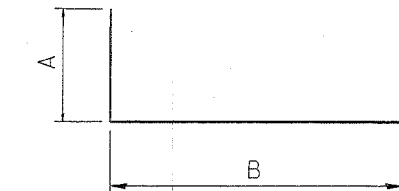


P.A. NO.	SECTION	COUNTY	TOTAL SHEETS	SHEET NO.
VAR. 2005-027	GRR	*	19	10
STA.	TO STA.			
FED. ROAD DIST. NO.	ILLINOIS	FED. AID PROJECT		

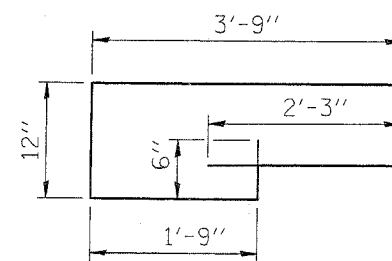
* MCHENRY, LAKE, KANE, COOK AND DUPAGE
CONTRACT 62961



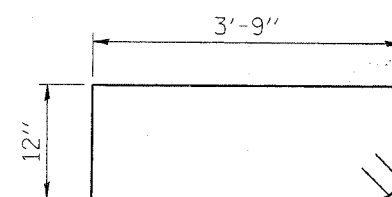
ELEVATION



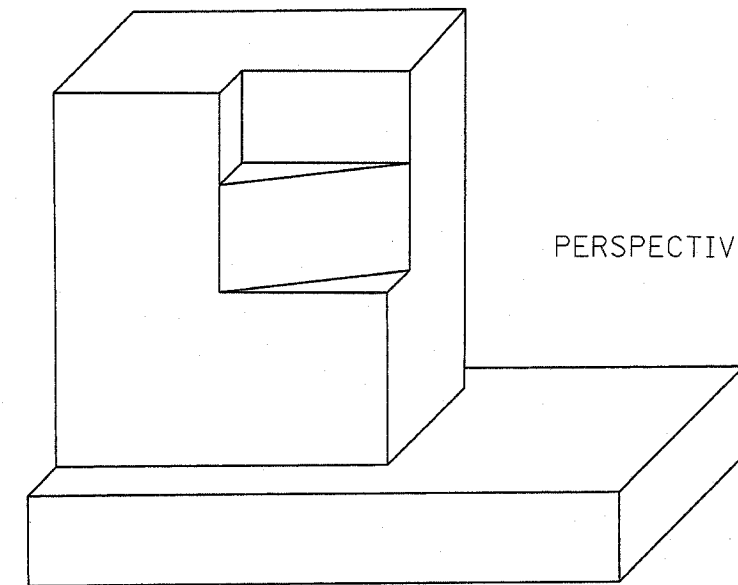
BAR	A	B	A+B
V ₁	4'-8"	6"	5'-2"
V ₂	2'-6"	6"	3'-0"
W ₁	4'-8"	6'-6"	11'-2"
W ₂	2'-0"	3'-0"	5'-0"
W ₄	4'-2"	3'-0"	7'-2"



S₁ BAR



S₂ BAR

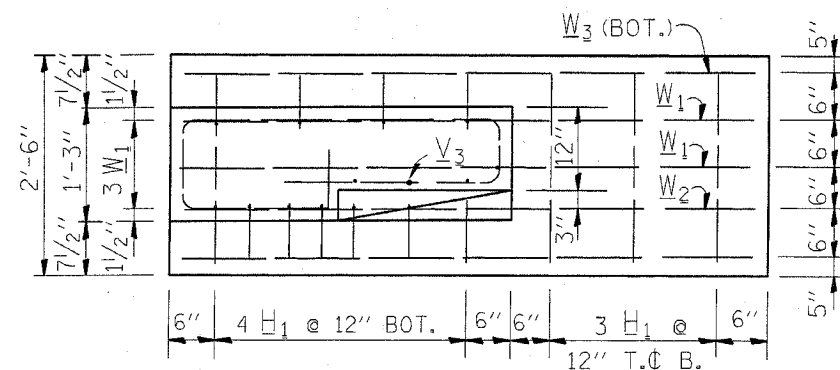


PERSPECTIVE VIEW

NOTES: CLASS SI CONCRETE SHALL BE USED THROUGHOUT
REINFORCEMENT TO BE SIZE #4 UNLESS OTHERWISE NOTED

BAR SCHEDULE

BAR	NO.	LENGTH
V ₁	8	5'-2"
V ₂	3	3'-0"
V ₃	4	3'-0"
W ₁	3	11'-2"
W ₂	1	5'-0"
W ₃	2	6'-6"
W ₄	2	7'-2"
S ₁	4	10'-0"
S ₂	2	10'-0"
H ₁	1	2'-3"



FOOTING PLAN

THIS SHEET IS FOR INFORMATION ONLY

REVISIONS	
NAME	DATE
CREATED	10-31-88

ILLINOIS DEPARTMENT OF TRANSPORTATION

TYPICAL DETAIL FOR
GUARDRAIL ANCHOR BLOCK
REPAIR

SCALE: NONE
DATE: 10/2/2006

DRAWN BY: R.F.L.
CHECKED BY: