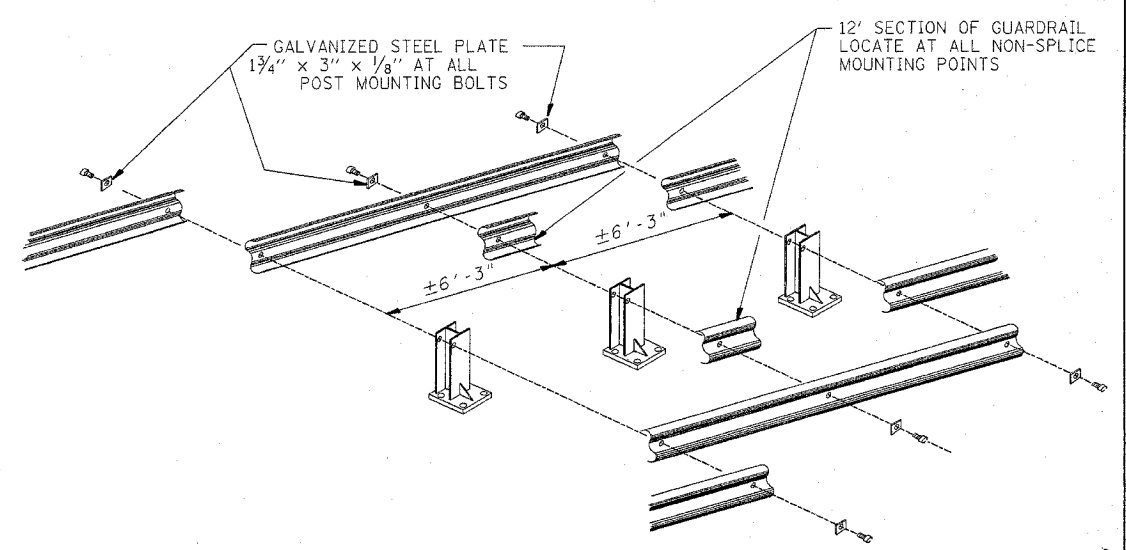
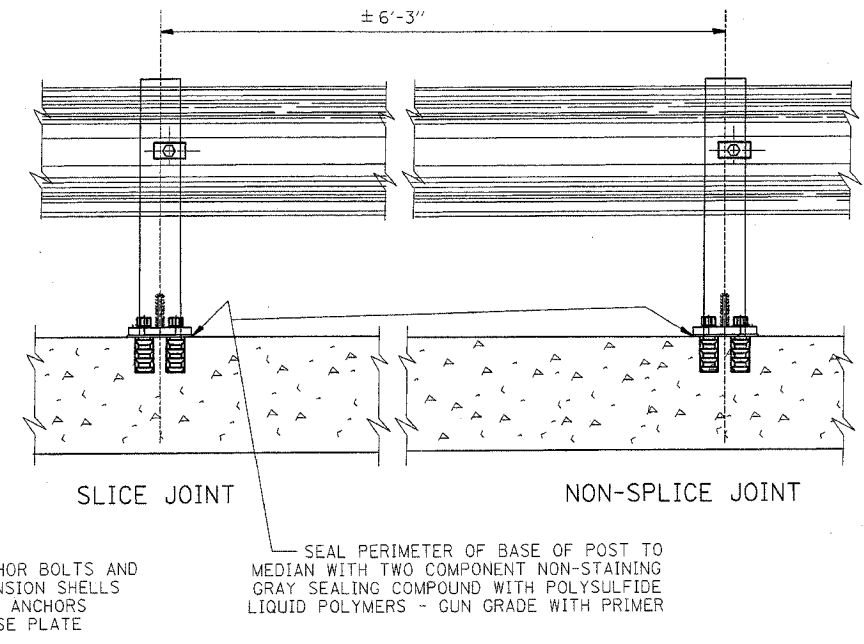
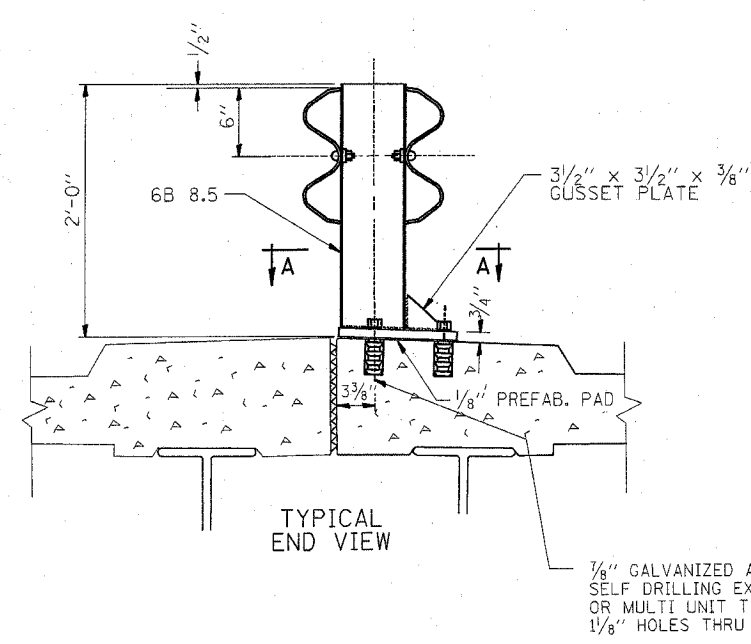
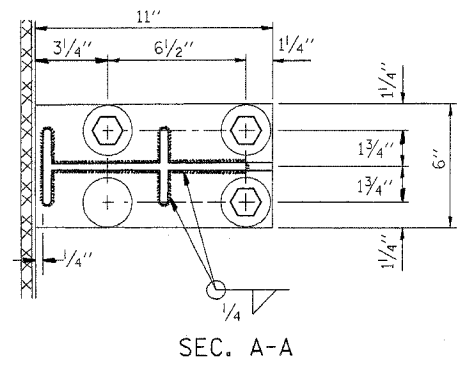


E. & S. NO.	SECTION	COUNTY	TOTAL SHEETS	SHEET NO.
VAR. 2005-027 GRR	*	19	12	
STA.	TO STA.			
FED. ROAD DIST. NO.	ALLIANCE	FED. AID PROJECT		

* MCHENRY, LAKE, KANE, COOK AND DUPAGE
CONTRACT 62961



NOTE:
 DIAMOND TIPPED DRILL SHALL BE USED TO
 DRILL THRU REINFORCEMENT BARS



NOTE:
 POSTS SHALL BE HOT DIPPED GALVANIZED AFTER FABRICATION IN ACCORDANCE WITH ASTM DESIGNATIONS A-123 AND A-385.
 TWO PERCENT (2%) OF ALL ANCHOR BOLTS SHALL BE TEST LOADED IN PLACE. MIN. TEST LOAD = 8 KIPS.
 ALL BOLTS, NUTS AND WASHERS SHALL BE GALVANIZED IN ACCORDANCE WITH ASTM DESIGNATION A-153.
 FOR MATERIAL COMPOSITION OF PREFABRICATED PAD, SEE ARTICLE 54.9(F), (BEARING AND ANCHORAGE), OF THE STANDARD SPECIFICATIONS.
 PROVIDE 1-1/8" AND 2-1/16" GALVANIZED STEEL SHIMS FOR 25% OF THE POSTS.
 IF ONE ANCHOR BOLT FAILS DURING TEST, TWO OTHER ANCHOR BOLTS SHALL BE TESTED. TESTING EQUIPMENT CAN BE OBTAINED FROM BOLT COMPANIES.

REVISIONS	
NAME	DATE
CREATED	10-31-88

ILLINOIS DEPARTMENT OF TRANSPORTATION
**TYPICAL DETAIL FOR
 CENTER LONGITUDINAL JOINT
 GUARDRAIL JOINT**
 SCALE: NONE
 DATE: 10/2/2006
 DRAWN BY R.F.L.
 CHECKED BY

THIS SHEET IS FOR INFORMATION ONLY