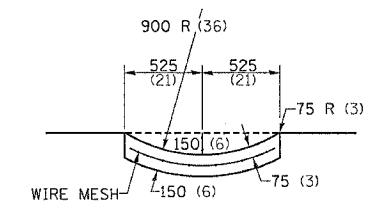
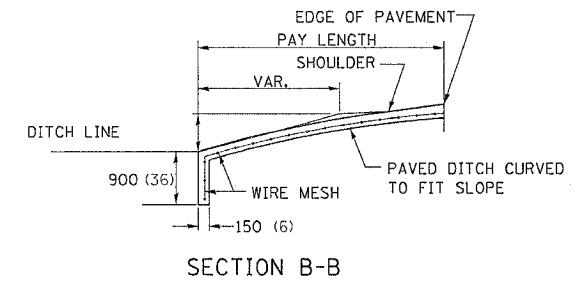
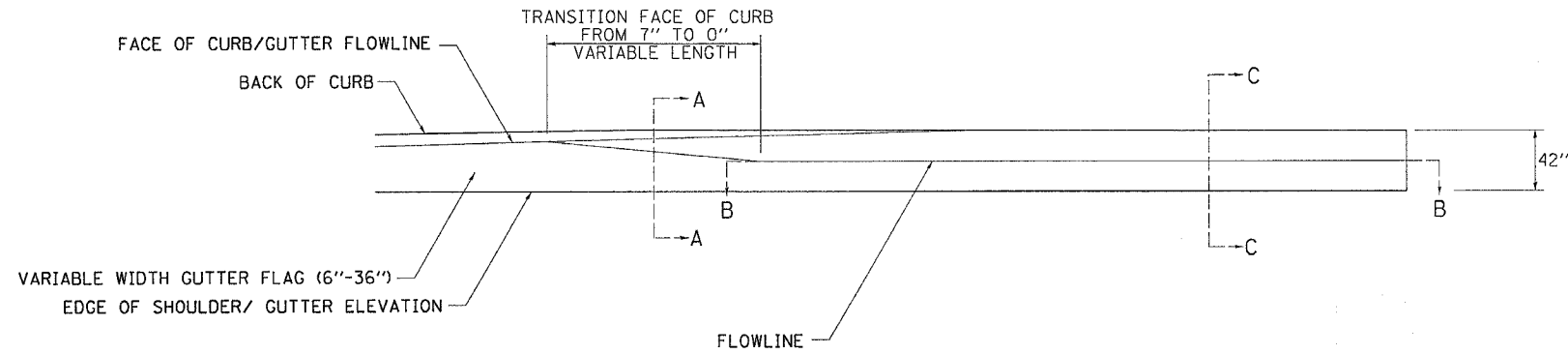


F.A.I. RTE.	SECTION	COUNTY	TOTAL SHEETS	SHEET NO.
80	37-1HBR-1	HENRY	133	63
STA.		TO STA.		
FED. ROAD DIST. NO.		ILLINOIS	FED. AID PROJECT	

# CURB AND GUTTER FLUME DETAIL



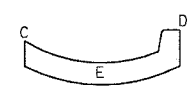
**QUANTITY OF CONCRETE**  
 SECTION B-B = STA 38+30 - STA 38+45 = 1.05 CU.YD  
 SECTION B-B = STA 40+25 - STA 40+50 = 1.75 CU.YD

SECTION C-C

**NOTE:**  
 CLASS SI CONCRETE SHALL BE USED THROUGHOUT. CURB AND GUTTER OUTLET SHALL BE TIED TO PAVEMENT SLAB WITH 2 TIE BARS, 750(30) LONG - 750(30) CENTERS. OUTLET SHALL BE TIED TO CURB AND GUTTER AT CONTRACTION JOINTS AS SHOWN. GUTTER OUTLET AND PAVED DITCH SHALL BE REINFORCED WITH WIRE MESH HAVING A WEIGHT OF AT LEAST 2.83 Kg/m<sup>2</sup> (58 LBS/FT.<sup>2</sup>) FOR CLASS SI CONCRETE (OUTLET).

ALL DIMENSIONS ARE IN MILLIMETERS (INCHES) UNLESS OTHERWISE NOTED.

FLUME ELEVATION CHART									
STATION	EOP ELEV. (A)	SHOULDER WIDTH (APPROXIMATE) (FT) (B)	SHOULDER SLOPE (%) (C)	EDGE OF SHLDR/GUTTER ELEV. (C)	GUTTER FLAG WIDTH (FT)	GUTTER FLAG SLOPE (%)	TOP OF CURB/FLUME ELEV. (D)	GUTTER FL. ELEV. (E)	NOTES
38+30		N/A	N/A		N/A	N/A	607.61	607.11	End Flume
38+40		N/A	N/A		N/A	N/A	607.64	607.14	
38+45		N/A	N/A		N/A	N/A	607.99	607.59	Flume Configuration Per Flume Detail
38+50	608.44	N/A	N/A	608.24	N/A	N/A	608.40	608.04	Begin Gutter to Flume Transition
38+53	608.44	5	4.00	608.24	2.85	6.00	STD 606001	608.07	
38+60	608.43	5	4.00	608.23	2.50	6.00	STD 606001	608.08	
38+70	608.42	5	4.00	608.22	1.67	6.00	STD 606001	608.12	
38+80	608.41	5	4.00	608.21	0.83	6.00	STD 606001	608.16	
38+85	608.41	5	4.00	608.21	0.50	6.00	STD 606001	608.18	Begin Combination Concrete C&G, Type M (Special)
39+53	608.34	5	4.00	608.14	0.50	6.00	STD 606001	608.11	Begin Combination Concrete C&G, Type M (Special)
39+60	608.33	5	4.00	608.13	0.67	6.00	STD 606001	608.09	
39+70	608.32	5	4.00	608.12	1.17	6.00	STD 606001	608.05	
39+80	608.31	5	4.00	608.11	1.67	6.00	STD 606001	608.01	
39+90	608.3	5	4.00	608.10	2.17	6.00	STD 606001	607.97	
39+95.50	608.29	5	4.00	608.09	2.33	6.00	STD 606001	607.95	
40+00	608.29	5	4.00	608.09	2.67	6.00	STD 606001	607.93	Begin Gutter to Flume Transition
40+10	608.28	4.92	4.07	608.08	Transition	Variable	608.13	607.81	
40+20	608.27	4.48	4.46	608.07	Transition	Variable	608.13	607.69	
40+25	608.27	5	4.00	608.07	N/A	N/A	608.13	607.63	Flume Configuration Per Flume Detail
40+30	608.27	3.76	4.00	608.12	N/A	N/A	608.07	607.57	
40+40	608.26	2.2	4.00	608.17	N/A	N/A	607.94	607.45	
40+50	608.25	1.06	4.00	608.21	N/A	N/A	607.83	607.33	End Flume



**QUANTITY OF CONCRETE**  
 SECTION A-A = STA 38+45 - STA 38+53 = 0.62 CU.YD  
 SECTION A-A = STA 40+00 - 40+25 = 2.02 CU.YD

SECTION A-A

**NOTES:**  
**STATION 38+30 TO STATION 38+85**  
 Combination Concrete Curb and Gutter, Type M (Special) Begins at Station 38+53 to Station 38+85 and Station 39+53 to Station 40+00.  
 Concrete Flume Begins at Station 38+30 to Station 38+53 and Station 40+00 to Station 40+50.  
 Station 38+53 to Station 38+85 Curb and Gutter Flowline Slope = 0.35%  
 From Station 38+45 to Station 38+53 the Curb and Gutter will taper from 3.50 feet to 3.583 feet.  
 From Station 38+45 to Station 38+53 the Face of Curb will taper from 0-inches to 7-inches.  
 Station 38+30 to Station 38+53 Flume Flowline Slope = 4.17%  
**STATION 39+53 TO STATION 40+50**  
 Station 39+53 to Station 40+00 Curb and Gutter Flowline Slope = 0.383%  
 Station 40+00 to Station 40+50 Flume Flowline Slope = 1.20%  
 From Station 40+00 to Station 40+25 the Curb and Gutter will taper from 3.583 feet to 3.50 feet.  
 From Station 40+00 to Station 40+25 the Face of Curb will taper from 7-inches to 0-inches.  
 Flowline locations will taper as shown on the project plans.

PLOT DATE = Fri Sep 01 10:46:07 2006  
 FILE NAME = c:\p\projects\213128\313128.dgn  
 PLOT SCALE = 56.20000 / 1 IN.  
 USER NAME = rnkheal

REVISIONS		ILLINOIS DEPARTMENT OF TRANSPORTATION
NAME	DATE	

SCALE: VERT.     DRAWN BY  
 HORIZ.            CHECKED BY  
 DATE