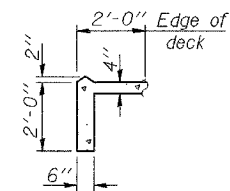
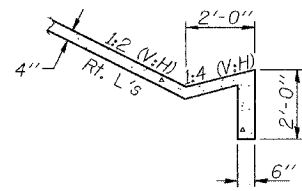


STATE OF ILLINOIS
DEPARTMENT OF TRANSPORTATION

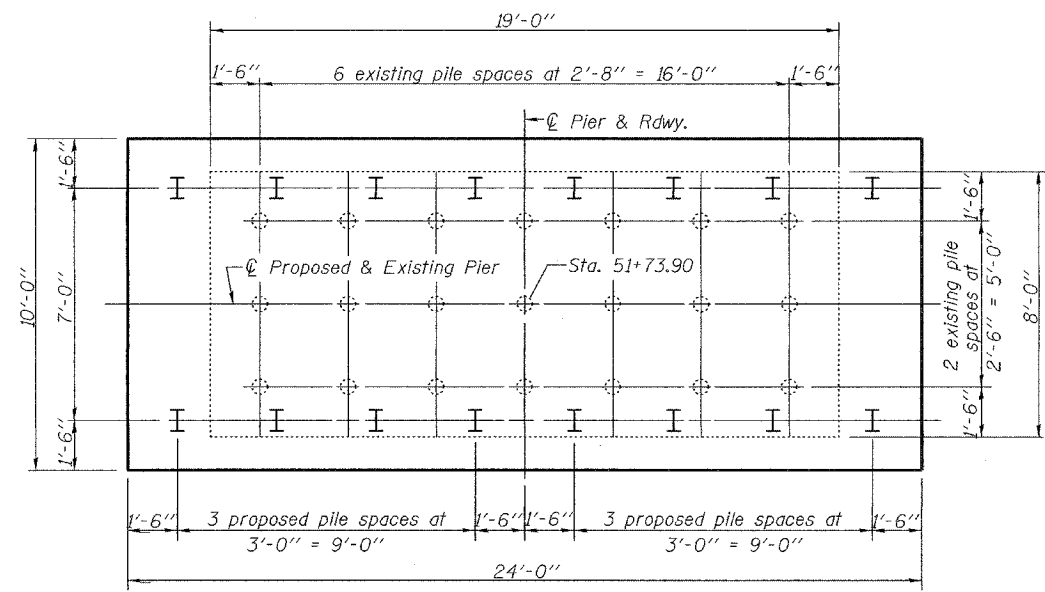
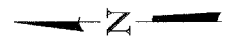
| | | | | | |
|-----------------------|-----------|------------------|-----------------|-------|--------------------------|
| ROUTE NO. | SECTION | COUNTY | DIS. NO. | SHEET | SHEET NO. 2 18 SHEETS |
| F.A.I. 80 | 37-IHBR-1 | HENRY | 133 | 65 | |
| FED. ROAD DIST. NO. 7 | ILLINOIS | FED. AID PROJECT | Contract #64602 | | |



SLOPEWALL SECTION A-A

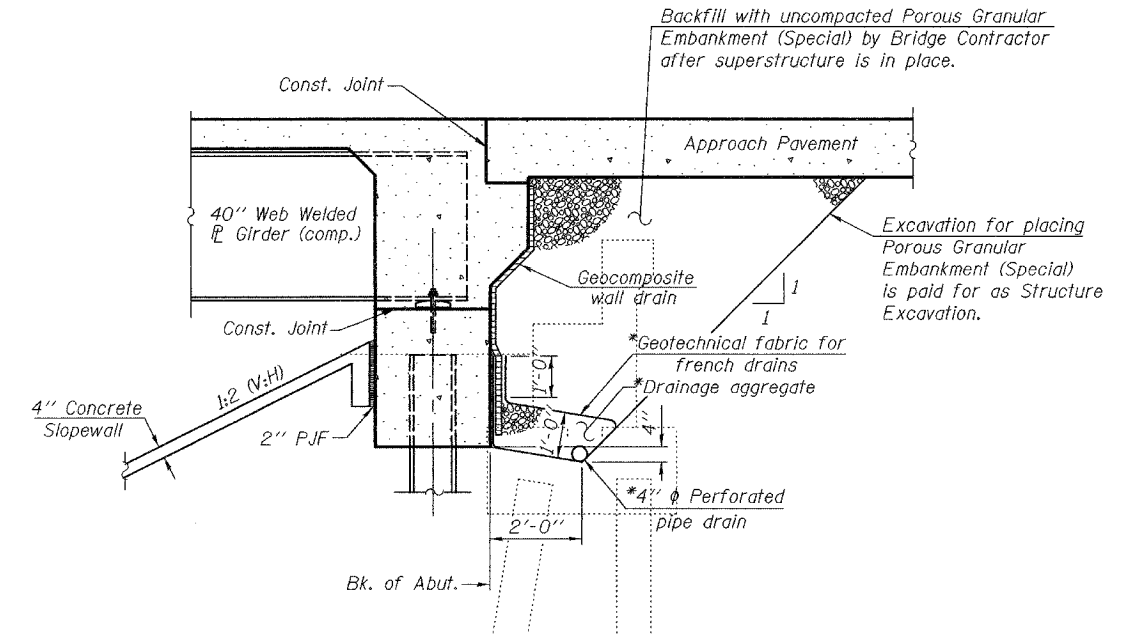


SLOPEWALL SECTION B-B



EXISTING AND PROPOSED FOOTING PILE LAYOUT AT PIER

Note: Existing plans indicate existing piles are timber piles.



SECTION THRU INTEGRAL ABUTMENT

(Horiz. dim. @ Rt. L's)

*Included in the cost of Pipe Underdrains for Structures 4".

Note:
All drainage system components shall extend to 2'-0" from the end of each wingwall except an outlet pipe shall extend until intersecting with the side slopes. The pipes shall drain into concrete headwalls. (See Article 601.05 of the Standard Specifications and Highway Standard 601101).

STATION 461+73.82
BUILT 200 BY
STATE OF ILLINOIS
F.A.I. RTE. 80 - SEC. 37-IHBR-1
LOADING HL93
STR. NO. 037-0171

NAME PLATE
See Std. 515001

| | |
|----------|-----------------------|
| DESIGNED | Michael D. Cima |
| CHECKED | Phillip R. Litchfield |
| DRAWN | R. Sommer |
| CHECKED | MDC/PRL |

| |
|---|
| September 25, 2006 |
| EXAMINED <i>Thomas J. Demagalaki</i> ENGINEER OF BRIDGE DESIGN |
| PASSED <i>Ralph E. Anderson</i> ENGINEER OF BRIDGES AND STRUCTURES |

GENERAL DETAILS
F.A.I. RT. 80 SEC. 37-IHBR-1
HENRY COUNTY
STATION 461+73.82
STRUCTURE NO. 037-0171