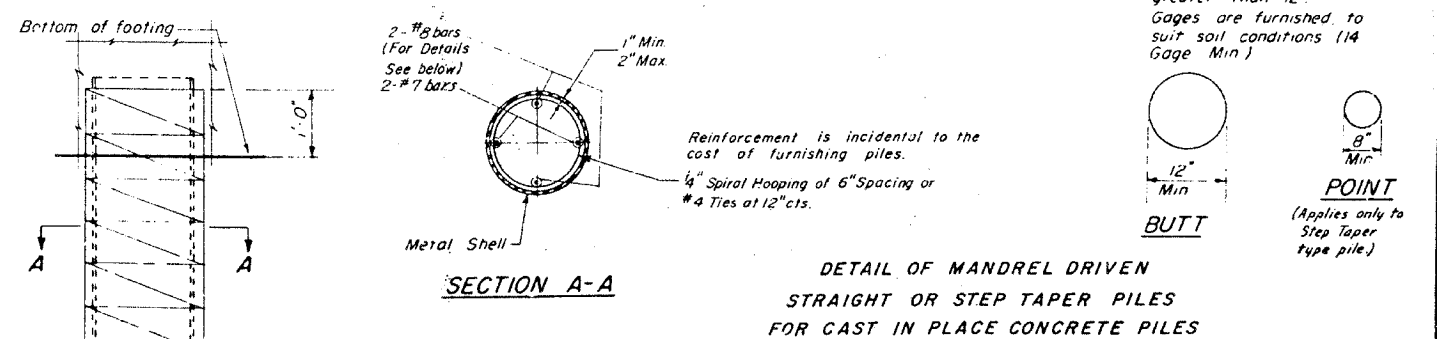
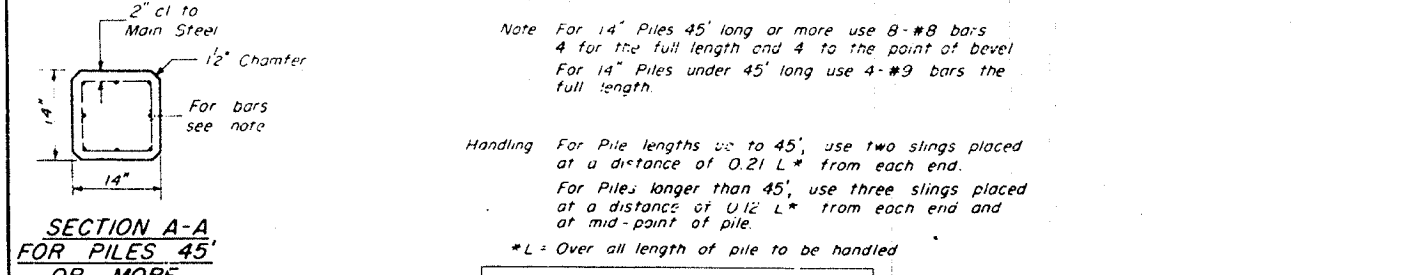
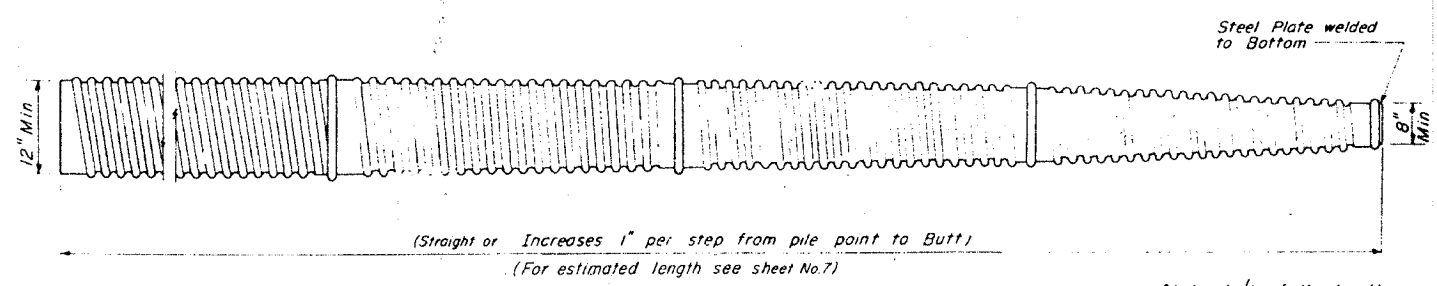
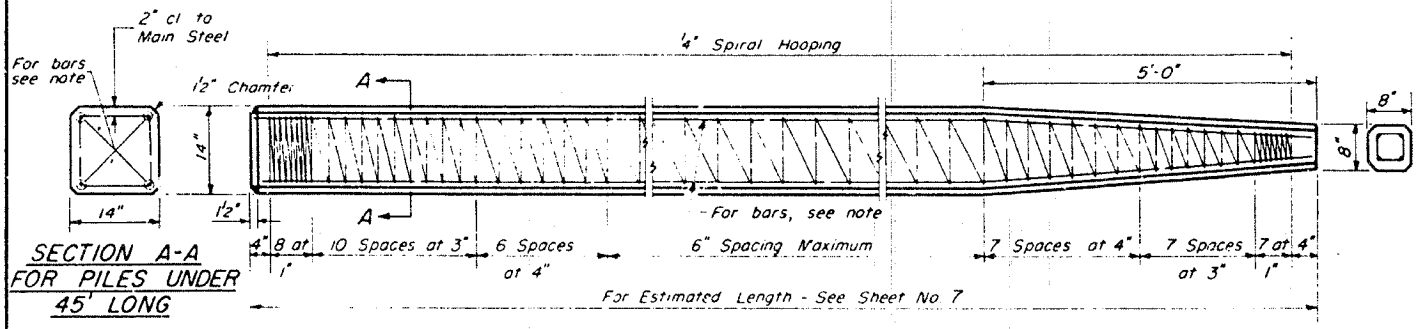
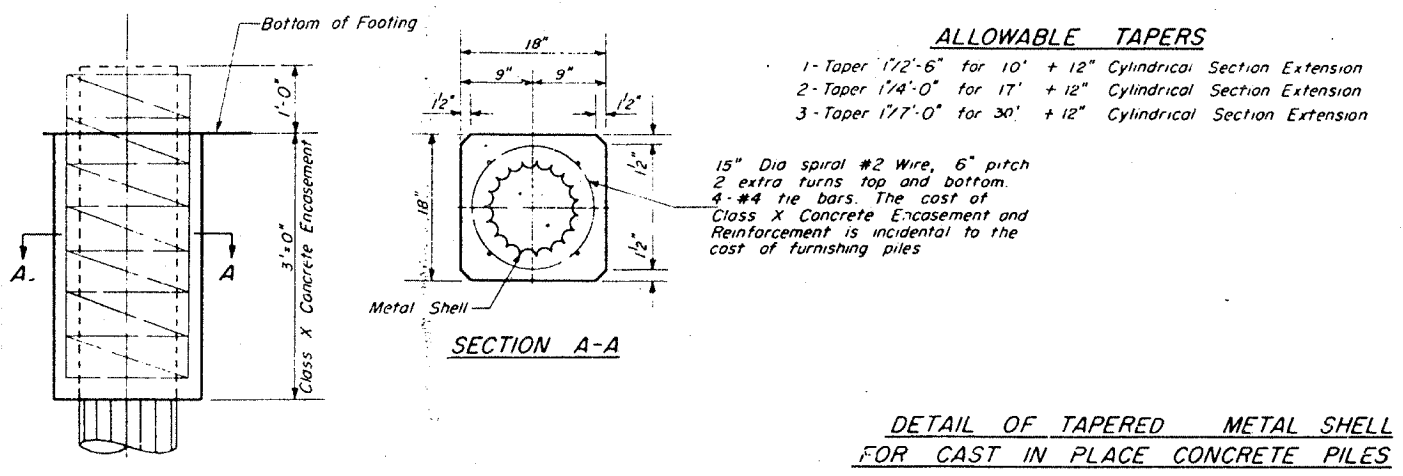
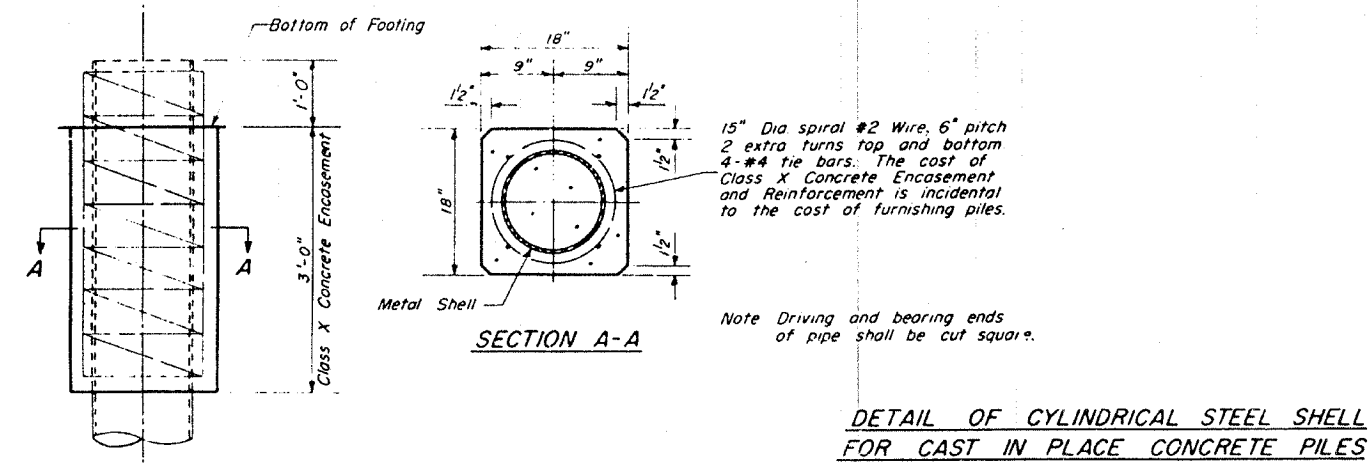
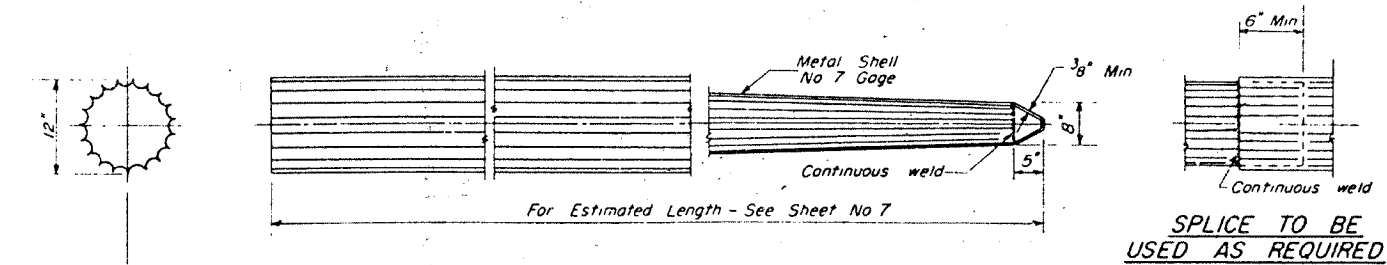
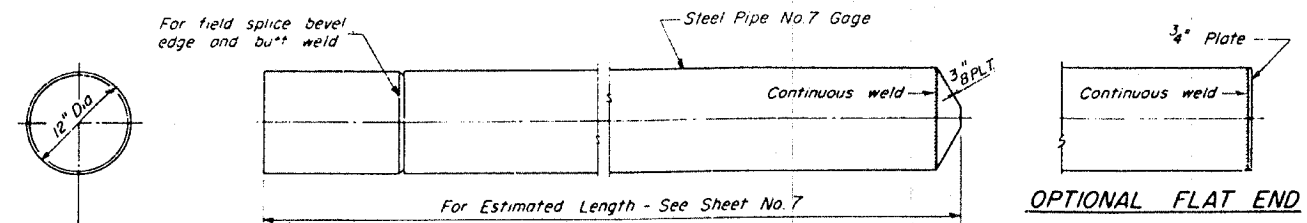


ROUTE NO	SECTION	COUNTY	TOTAL SHEETS	SHEET NO.
F.A.I. 80	37-IHB-1	HENRY	133	83
FED. ROAD DIST. NO. 7		ILLINOIS	FED. AID PROJ. NO.	



STATION 461+72.02
BUILT 196 BY
STATE OF ILLINOIS
F.A.I. RT. 80 SEC. 37-IHB-1
F.A. PROJ. I-80-1(53)
LOADING H15-S12

DE LEUW, CATHAR & CO., ENGINEERS
DESIGNED BY STD
DRAWN BY STD
CHECKED BY STD
IN CHARGE E.S. MARTINS
APPROVED L.N. RIAN

LETTERING FOR NAME PLATES
STANDARD 2113

DETAIL OF PRECAST CONCRETE PILES

PILE DETAILS
F.A.I. 80 SECTION 37-IHB-1
F.A.I. 80 UNDER S.B.I.-7 (ALT.)
HENRY COUNTY
STATION 461+72.02
SCALE: AS NOTED DATE:

