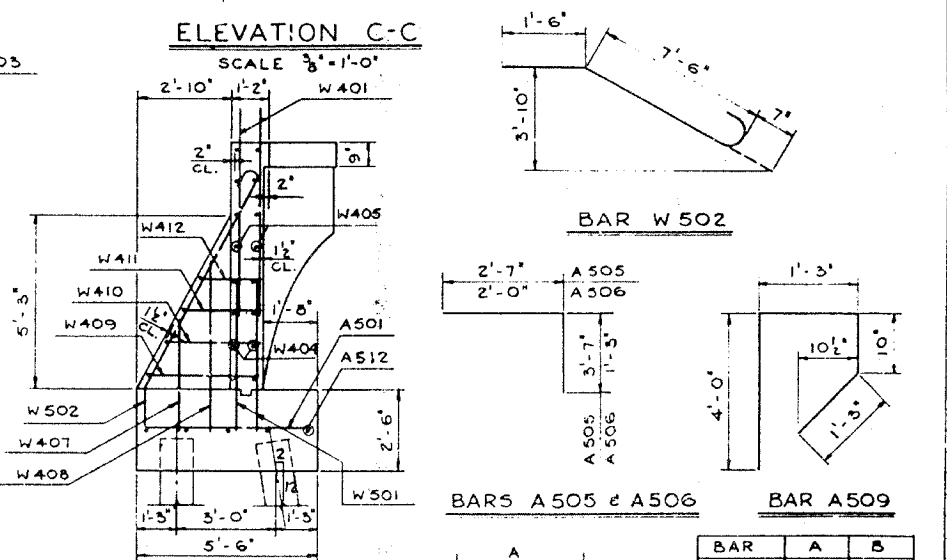
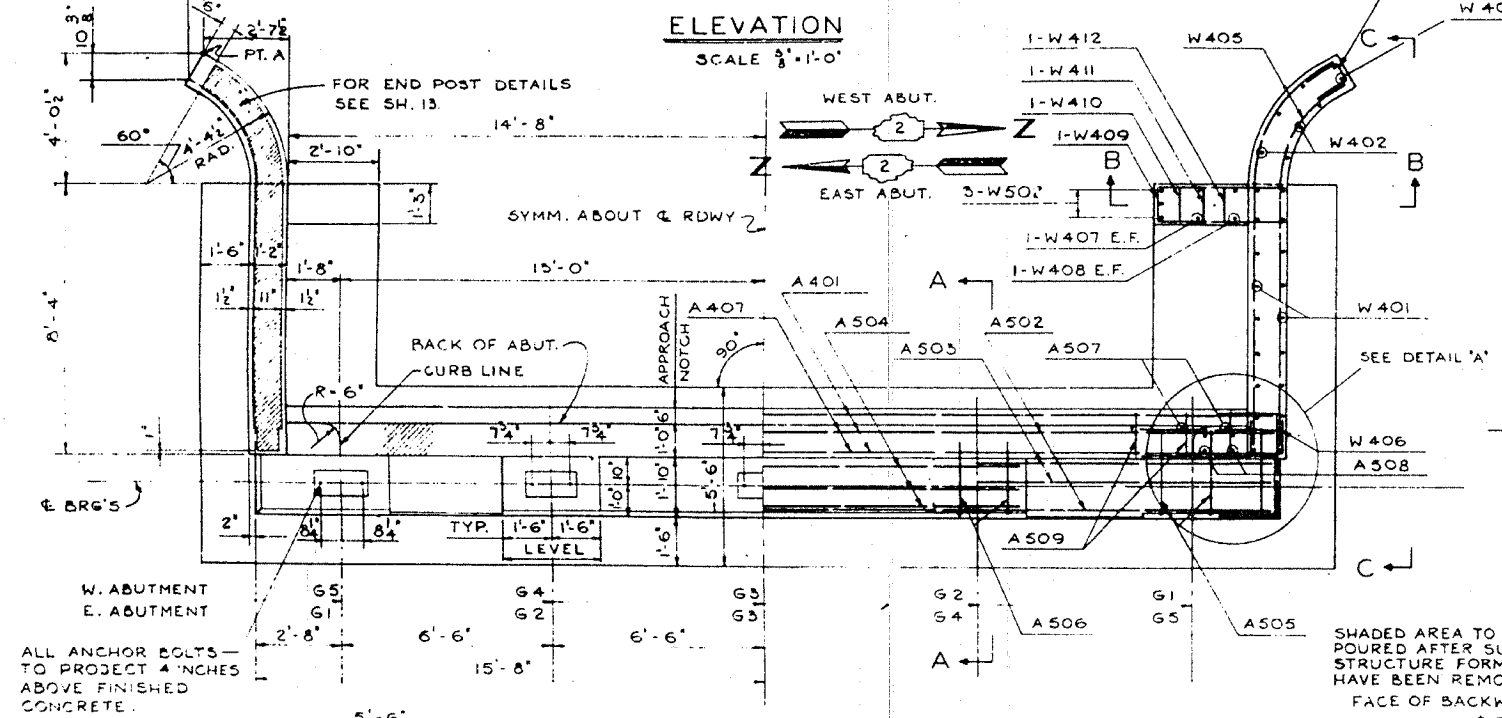
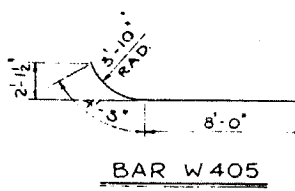
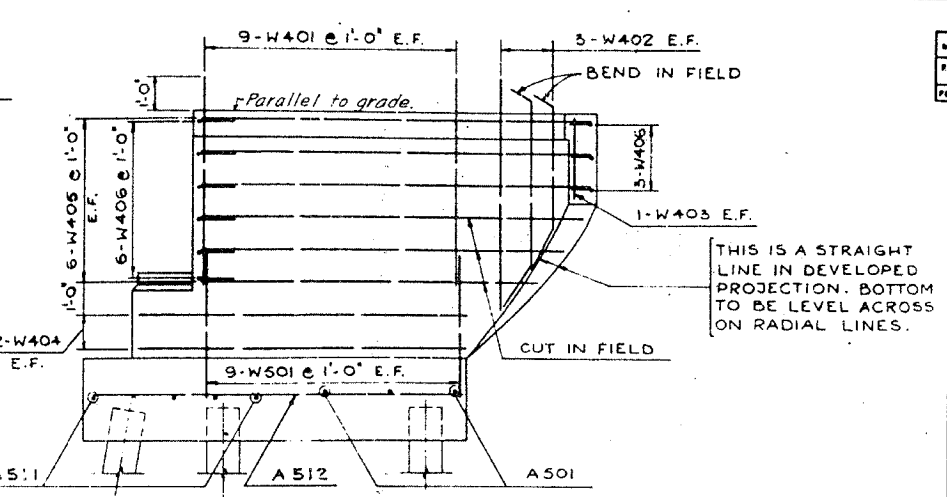
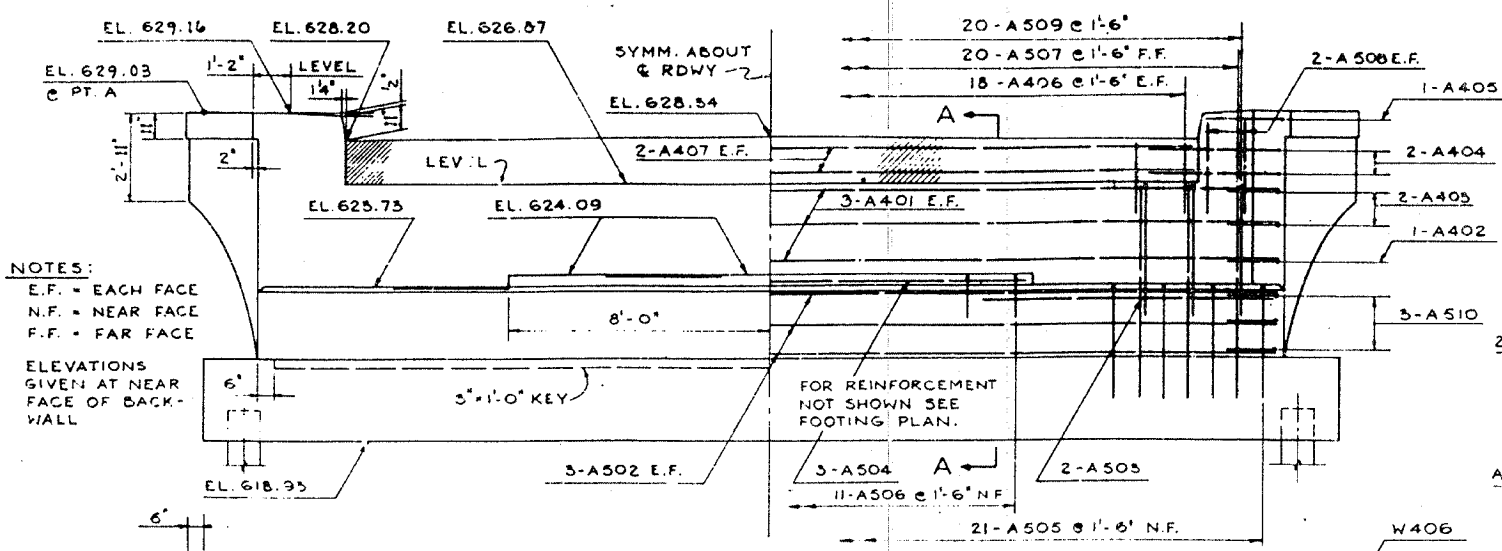
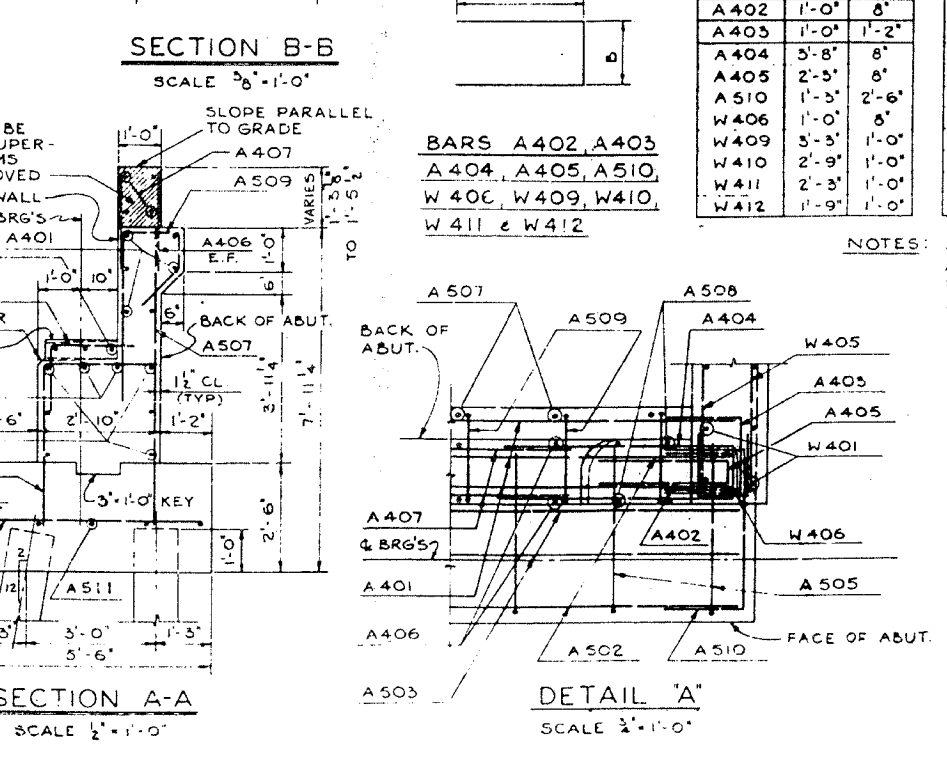
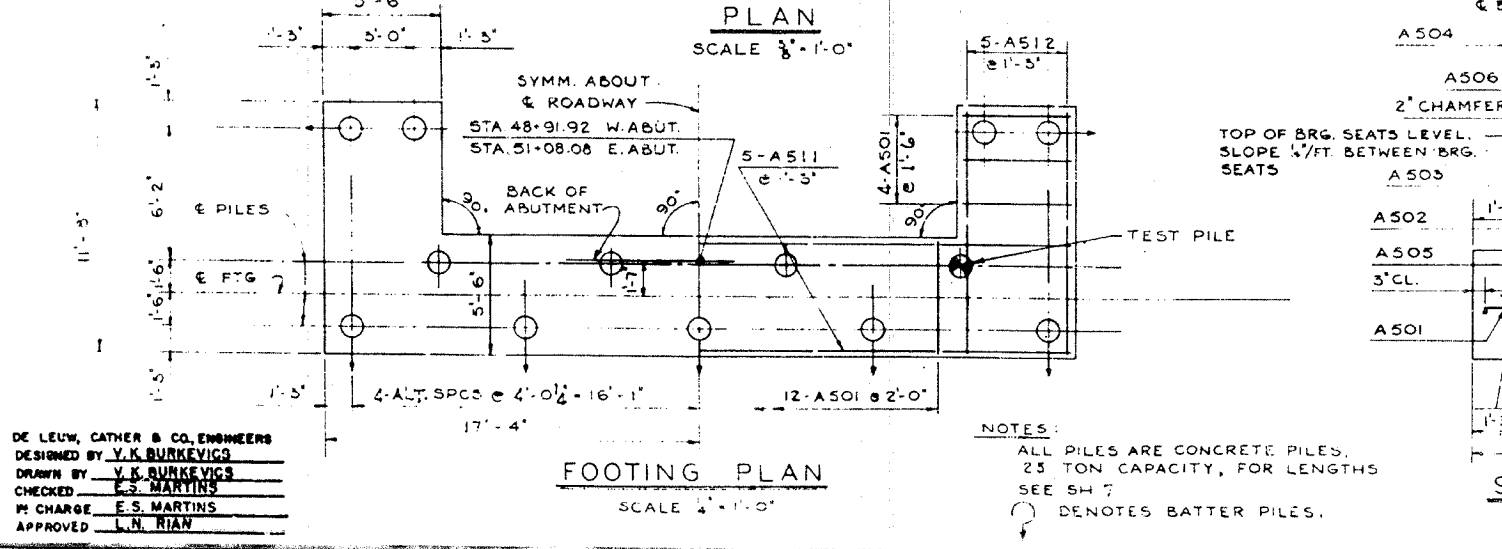


ROUTE NO.	SECTION	NO.	TOTAL SHEETS	SHEET NO.
F.A.I. 80	37-100-1	DEBY	133	84
DESIGN DIV. NO.	ILLINOIS	FEB. 20 1934		



BAR LIST - 2 ABUTMENTS

BAR	NUMBER	SIZE	LENGTH	SHAPE	WEIGHT
A401	12	#4	31'-0"		248
A402	4	#4	2'-8"		7
A403	8	#4	3'-2"		17
A404	8	#4	8'-0"		43
A405	4	#4	5'-2"		14
A406	72	#4	2'-6"		120
A407	8	#4	25'-9"		138
A501	40	#5	5'-0"		209
A502	12	#5	31'-0"		388
A503	8	#5	9'-0"		75
A504	6	#5	15'-6"		97
A505	42	#5	6'-2"		270
A506	22	#5	3'-3"		75
A507	40	#5	6'-9"		282
A508	16	#5	5'-5"		57
A509	40	#5	7'-4"		306
A510	12	#5	5'-0"		63
A511	10	#5	34'-2"		356
A512	20	#5	11'-2"		233
W401	72	#4	6'-5"		309
W402	24	#4	7'-2"		115
W403	8	#4	2'-6"		13
W404	16	#4	10'-0"		107
W405	48	#4	12'-3"		393
W406	36	#4	2'-8"		64
W407	8	#4	5'-3"		17
W408	8	#4	5'-3"		28
W409	4	#4	7'-6"		20
W410	4	#4	6'-6"		17
W411	4	#4	5'-6"		15
W412	4	#4	4'-6"		12
W501	72	#5	4'-9"		357
W502	12	#5	9'-7"		120
TOTAL	4585				



NOTES: ALL BAR DIMENSIONS ARE OUT TO OUT. ALL BAR MARKS ARE TO BE PREFIXED FOR SHIPMENT WITH LETTER 'W' FOR WEST ABUTMENT AND LETTER 'E' FOR EAST ABUTMENT. FOR EXAMPLE: W401, EW406. USE HALF OF THE NUMBER GIVEN IN BAR LIST FOR EACH ABUTMENT.

BILL OF MATERIAL - 2 ABUT'S

ITEM	UNIT	QUANTITY
CLASS X CONCRETE	CU YD	90.8
REINFORCEMENT BARS	POUND	4,585
DRIVING CONCRETE PILES	LIN FT	1,200
FURNISHING CONCRETE PILES	LIN FT	1,200
TEST PILE CONCRETE	EACH	2

DE LEUW, CATHAR & CO. ENGINEERS
DESIGNED BY V.K. BURKEVICS
DRAWN BY V.K. BURKEVICS
CHECKED E.S. MARTINS
IN CHARGE E.S. MARTINS
APPROVED L.N. RIAN

ABUTMENT DETAILS
F.A.I. 80 SECTION 37-100-1
F.A.I. 80 UNDER S.B.L-7 (ALT.)
HENRY COUNTY
STATION 461+72.02
SCALE: AS NOTED DATE: