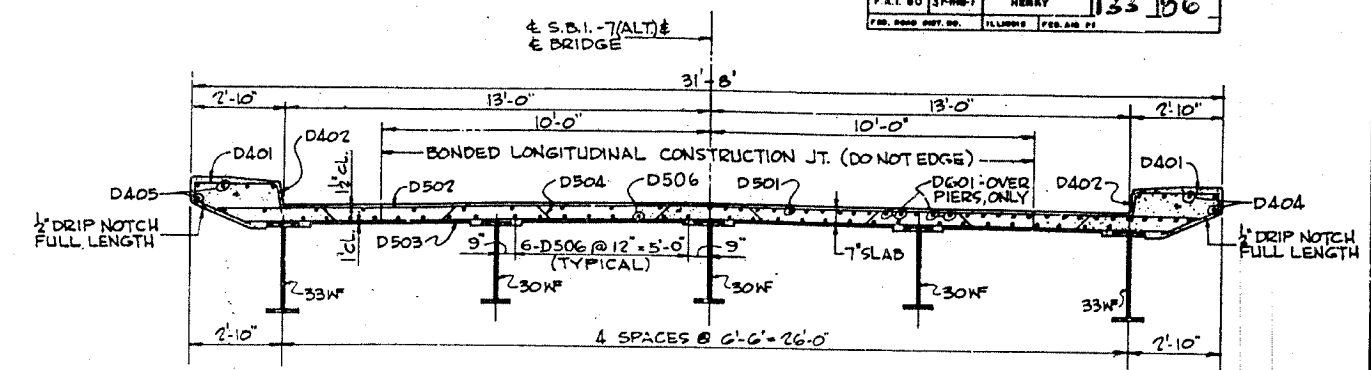
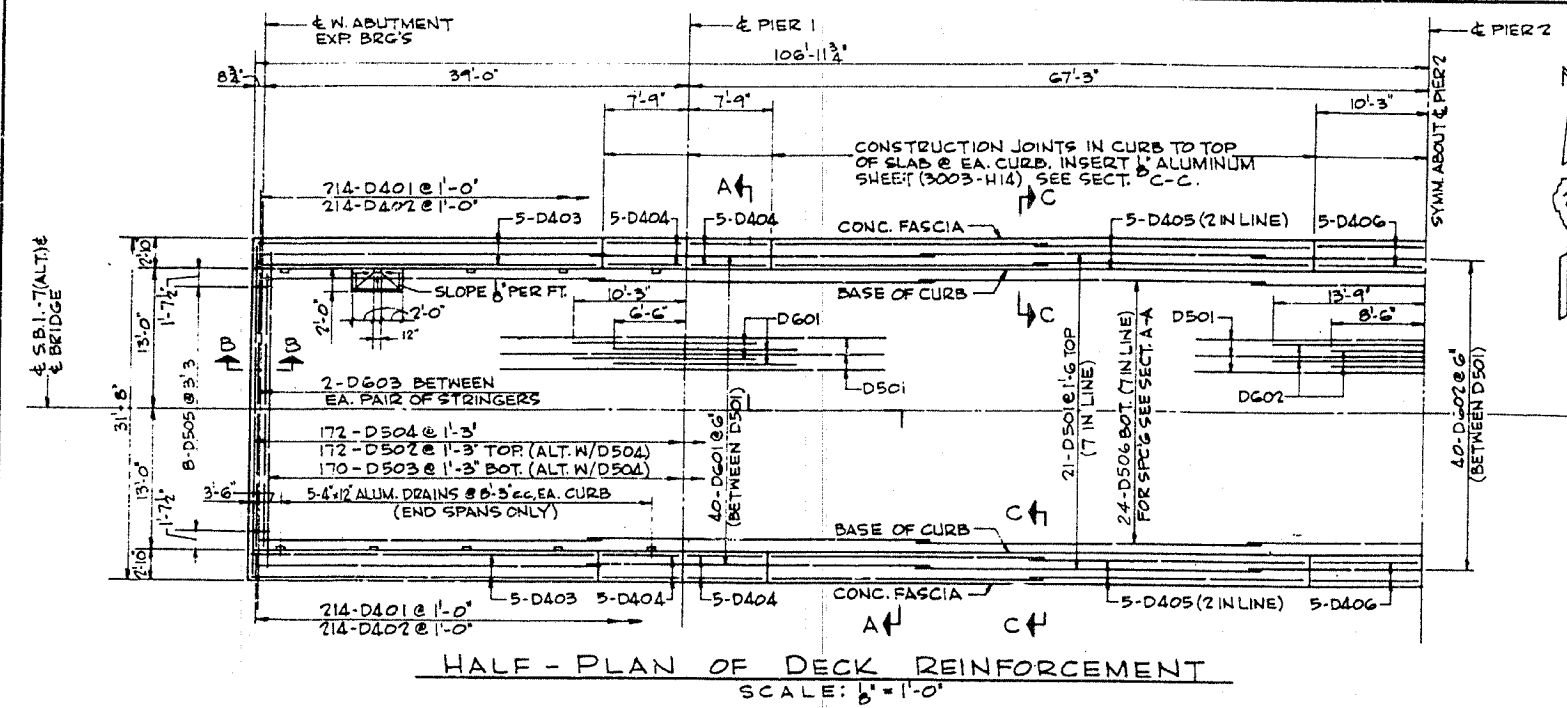
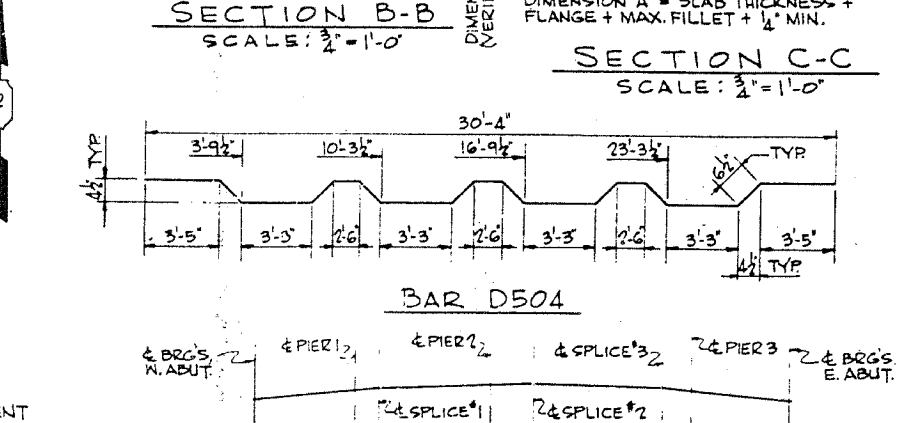
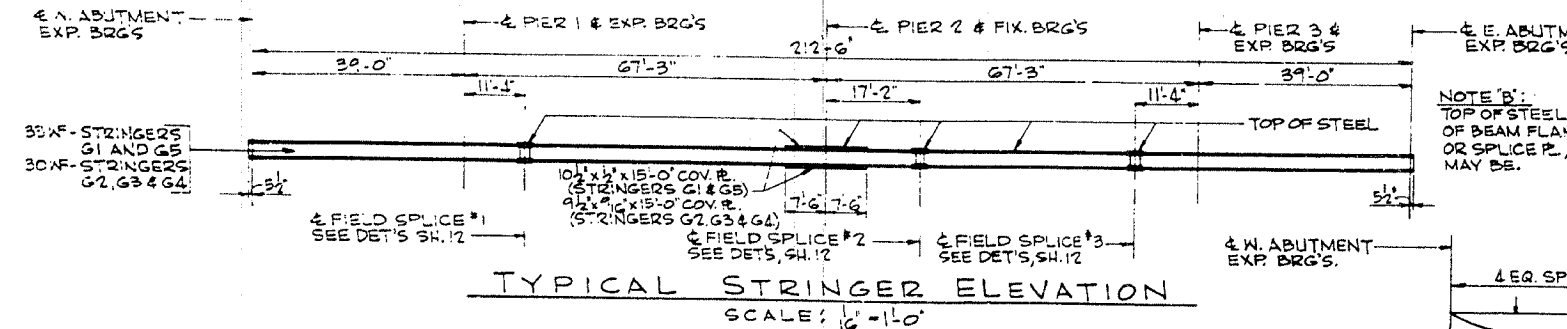
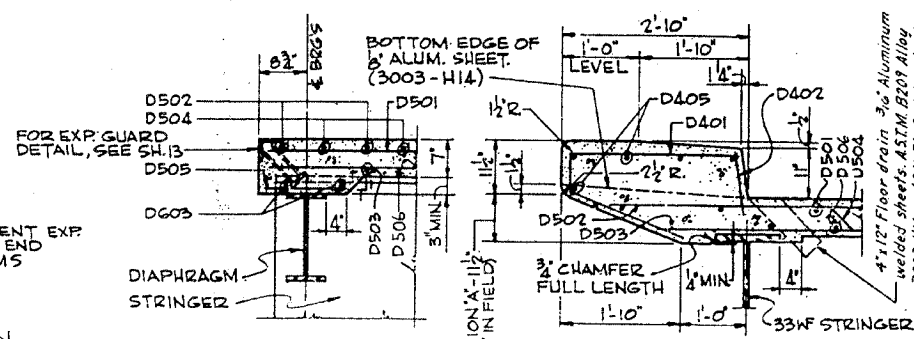
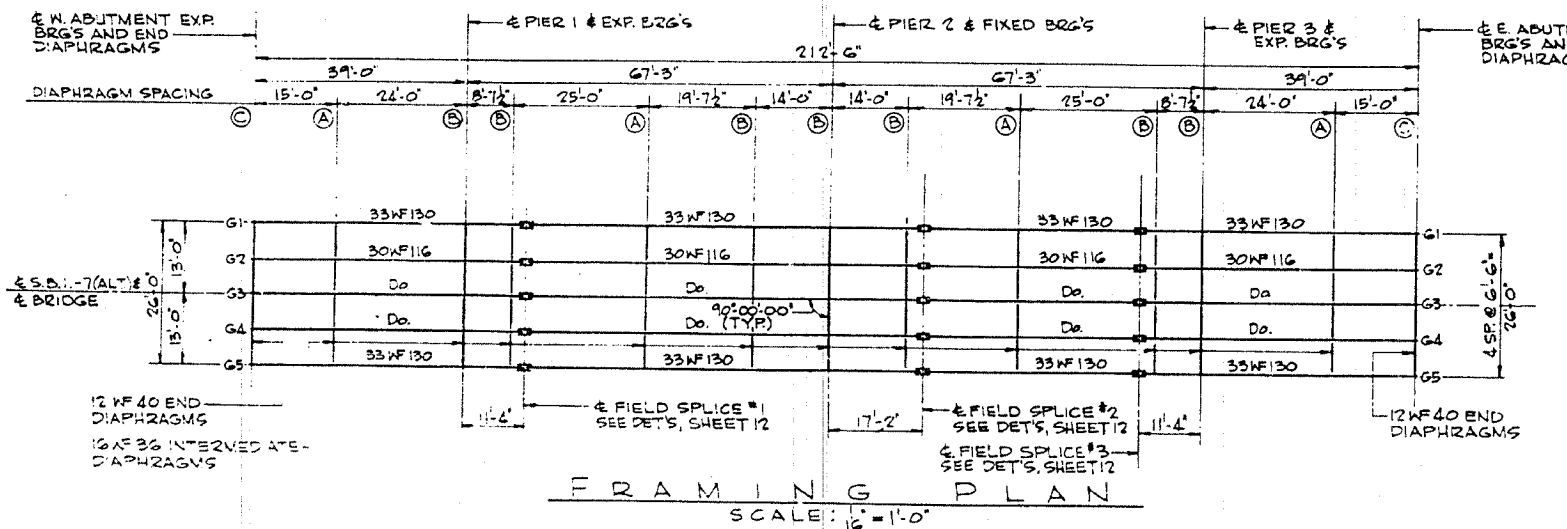


ROUTE NO.	SECTION	QUANTITY	TOTAL SHEETS	SHEET NO.
F.A.I. 80	37-1HB-1	HENRY	133	96
FOR ROAD DIST. NO. ILLINOIS FEB. 28 21				

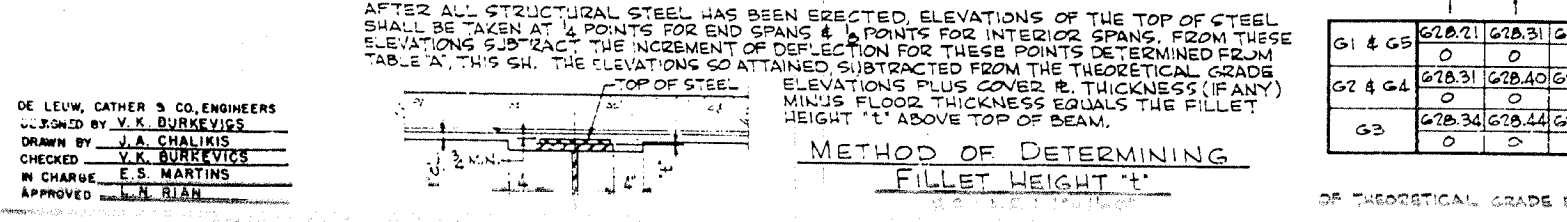


BAR	NO	SIZE	LENGTH	SHAPE	WEIGHT
D401	478	4	5'-1"	C	1,453
D402	478	4	1'-2"		334
D403	20	4	31'-8"		423
D404	40	4	7'-6"		200
D405	40	4	25'-0"		668
D406	20	4	10'-0"		134
D501	147	5	31'-10"		4,081
D502	172	5	30'-4"		5,442
D503	170	5	28'-5"		5,039
D504	172	5	31'-8"		5,681
D505	16	5	1'-0"		17
D506	168	5	31'-8"		5,549
D601	80	6	16'-9"		2,013
D602	40	6	22'-3"		1,337
D603	16	6	6'-0"		144
TOTAL					33,315



LOCATION	W. ABUT.	PIER 1	SPLICE #1	PIER 2	SPLICE #2	SPLICE #3	PIER 3	E. ABUT.
G1 & G5	627.628	627.897	628.072	628.122	628.159	628.072	627.897	627.628
G2 & G4	627.726	627.799	628.170	628.130	628.257	628.170	627.999	627.726
G3	627.761	628.035	628.156	628.166	628.193	628.156	628.035	627.761

ITEM	UNIT	QUANTITY
CLASS X CONCRETE	CU. YD.	182.9
FURNISHING & ERECTING STRUCTURAL STEEL*	POUND	154,922
REINFORCEMENT BARS	POUND	33,315



LOCATION	W. ABUT.	PIER 1	SPLICE #1	PIER 2	SPLICE #2	SPLICE #3	PIER 3	E. ABUT.
G1 & G5	628.21	628.31	628.39	628.47	628.54	628.59	628.63	628.67
G2 & G4	628.0	628.40	628.49	628.57	628.64	628.69	628.73	628.77
G3	628.34	628.44	628.53	628.60	628.67	628.72	628.77	628.80

TABLE 'A'
OF THEORETICAL GRADE ELEVATIONS @ & OF STRINGERS & STRINGER DEFLECTIONS DUE TO CONC. ONLY.

INCLUDES ALL STRUCTURAL STEEL EXCEPT BEARINGS & EXPANSION GUARDS.

THEORETICAL GRADE ELEV. AT & STRINGERS - IN FEET.
STRINGER DEFLECTIONS DUE TO CONC. ONLY - IN INCHES (TYPICAL)

SUPERSTRUCTURE DETAILS
SLAB AND FRAMING PLAN
F.A.I. 80 SECTION 37-1HB-1
F.A.I. 80 UNDER S.B.I.-7 (ALT.)
HENRY COUNTY
STATION 461+72.02
SCALE: AS NOTED DATE:

DE LEUW, CATHERS & CO. ENGINEERS
DESIGNED BY V.K. BURKEVICS
DRAWN BY J.A. CHALIKIS
CHECKED V.K. BURKEVICS
IN CHARGE E.S. MARTINS
APPROVED L.N. RIAN