

F.A.P. RTE.	SECTION	COUNTY	TOTAL SHEETS	SHEET NO.
17	16-T	CARROLL	47	11

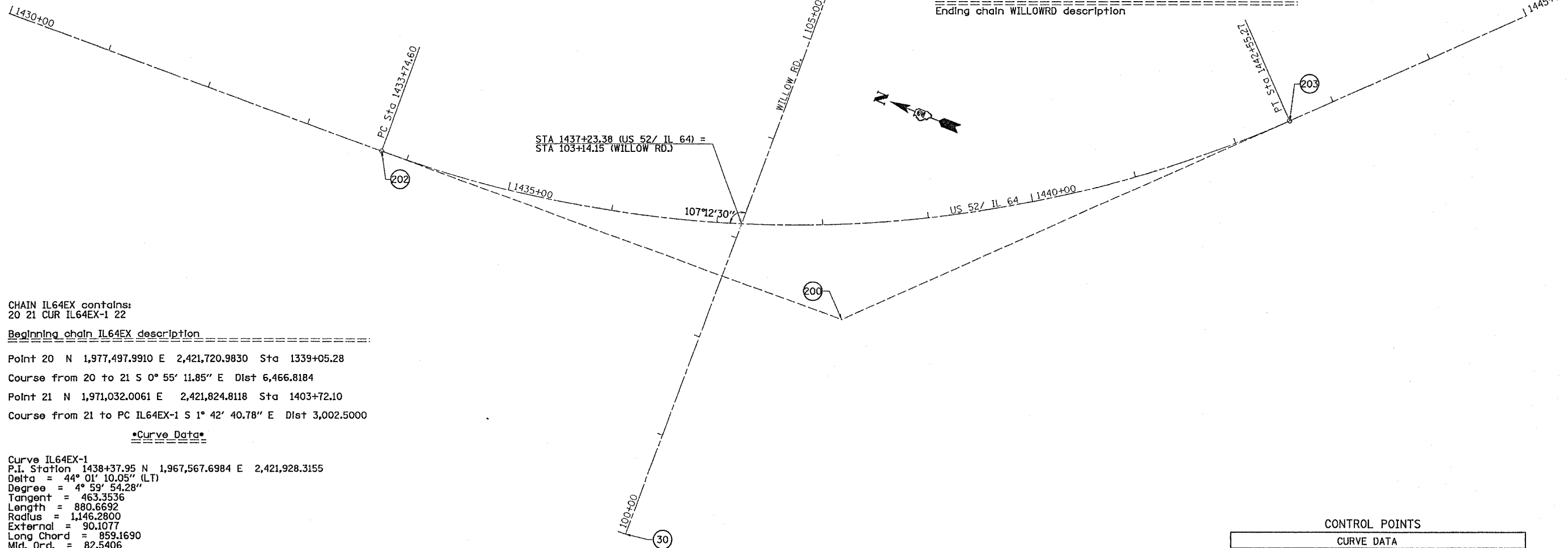
FED. ROAD DIST. NO. ILLINOIS FED. AID PROJECT
CONTRACT NO. 64897

BENCH MARKS							
POINT	NORTH	EAST	ELEVATION	CHAIN	STATION	OFFSET	DESCRIPTION
2408	1967666.62	2422020.04	928.22	IL64EX	1437+59.70	32.63' LT	RR SPIKE IN PP @ SE QUAD OF WILLOW RD & US 52

CHAIN WILLOWRD contains:
30 31

Beginning chain WILLOWRD description

Point 30 N 1,967,681.736 E 2,421,663.317 Sta 100+00.00
 Course from 30 to 31 N 88° 38' 52.74" E Dist 633.9121
 Point 31 N 1,967,696.6935 E 2,422,297.0472 Sta 106+33.91
 Ending chain WILLOWRD description



CHAIN IL64EX contains:
20 21 CUR IL64EX-1 22

Beginning chain IL64EX description

Point 20 N 1,977,497.9910 E 2,421,720.9830 Sta 1339+05.28
 Course from 20 to 21 S 0° 55' 11.85" E Dist 6,466.8184
 Point 21 N 1,971,032.0061 E 2,421,824.8118 Sta 1403+72.10
 Course from 21 to PC IL64EX-1 S 1° 42' 40.78" E Dist 3,002.5000

Curve Data

Curve IL64EX-1

P.I. Station 1438+37.95 N 1,967,567.6984 E 2,421,928.3155
 Delta = 44° 01' 10.05" (LT)
 Degree = 4° 59' 54.28"
 Tangent = 463.3536
 Length = 880.6692
 Radius = 1,146.2800
 External = 90.1077
 Long Chord = 859.1690
 Mid. Ord. = 82.5406
 P.C. Station 1433+74.60 N 1,968,030.8453 E 2,421,914.4780
 P.T. Station 1442+55.27 N 1,967,244.2633 E 2,422,260.1082
 C.C. N 1,968,065.0777 E 2,423,060.2467
 Back = S 1° 42' 40.78" E
 Ahead = S 45° 43' 50.83" E
 Chord Bear = S 23° 43' 15.81" E

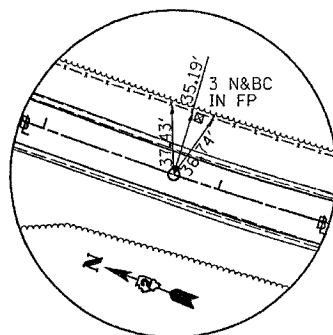
Course from PT IL64EX-1 to 22 S 45° 43' 50.83" E Dist 5,946.3715

Point 22 N 1,963,093.5140 E 2,426,518.1140 Sta 1502+01.64

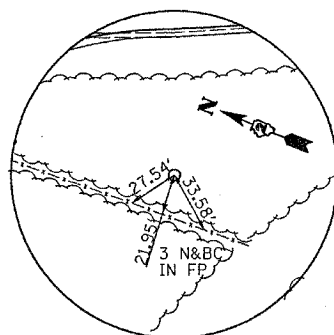
Ending chain IL64EX description

CONTROL POINTS

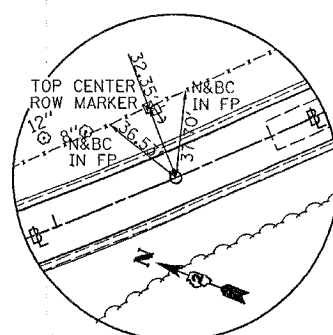
CURVE DATA				
POINT	CHAIN	STATION	OFFSET	DESCRIPTION
202	IL64EX	1433+74.60	0'	PC
201	IL64EX	1433+74.60	1146.28' LT	CC
200	IL64EX	1438+37.95	0'	PI
203	IL64EX	1442+55.27	0'	PT
30	WILLOWRD	100+00.00	0'	POT
31	WILLOWRD	106+33.91	0'	POT



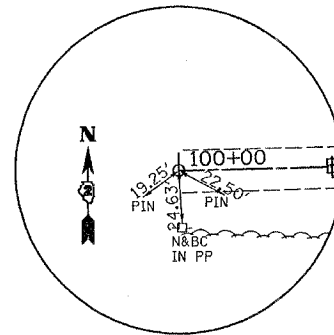
PC STA 1433+74.60
 N - 1968030.845 E - 2421914.478
 PC #202 - PK NAIL



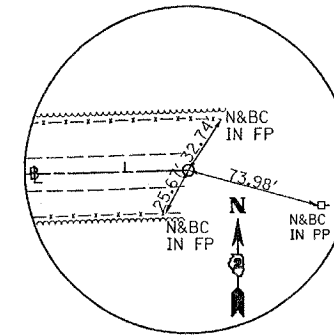
PI STA 1438+37.95
 N - 1967567.698 E - 2421928.316
 PI #200 - IRON ROD



PT STA 1442+55.27
 N - 1967244.263 E - 2422260.108
 PT #203 - PK NAIL



STA 100+00.00
 N - 1967681.736 E - 2421663.312
 POT #30 - IRON ROD



STA 106+33.91
 N - 1967696.694 E - 2422297.047
 POT #31 - IRON ROD

REVISIONS	
NAME	DATE

ILLINOIS DEPARTMENT OF TRANSPORTATION

FAP ROUTE 17
 HORIZONTAL & VERTICAL
 CONTROL

DATE 8/22/2006

DRAWN BY JCW
 CHECKED BY AWM