

BM #2 - RR SPIKE IN PP @ SE QUAD OF WILLOW RD & US 52.
32.63' LT, ELEV = 928.22

SEC 16, T24N, R7E, 4TH PM
DONALD KLUCK

F.A. RTE.	SECTION	COUNTY	TOTAL SHEETS	SHEET NO.
17	16-T	CARROLL	47	14
STA. 101+00 TO STA. 105+39.15				
FED. ROAD DIST. NO.			ILLINOIS FED. AID PROJECT	
CONTRACT NO. 64897				

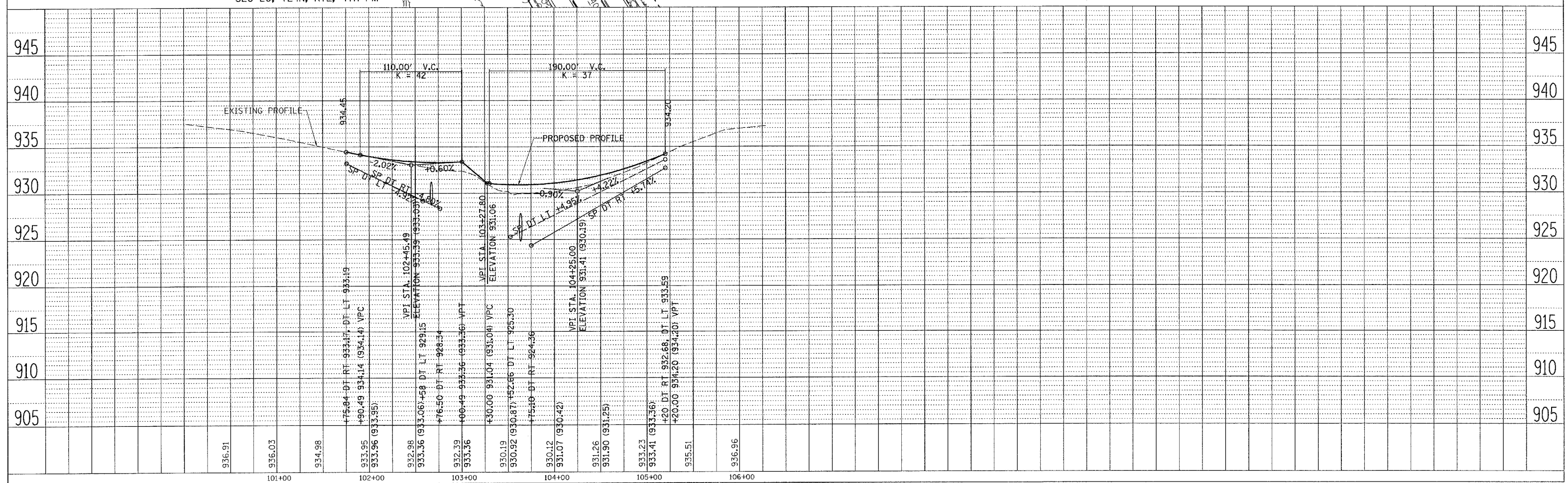
STA 102+66.0 (WILLOW RD.)
PIPE CULVERT, CLASS D
TYPE 1 CULVERT PIPE, 2 - 30"x74'
USFL 929.15, STA 102+54.0, 38.0' LT
DSFL 928.34, STA 102+75.7, 32.7' RT
W/ 2 CORRUGATED STEEL PIPE MULTIPLE
END SECTIONS (SEE SPECIAL DETAIL)
SEE NOTE ON THIS SHEET
Q10 = 39 CFS HW10 = 931.42
Q50 = 55 CFS HW50 = 932.18
Q100 = 63 CFS HW100 = 932.64
Q500 = 88 CFS HW500 = 934.49

PI STA = 1438+37.95
Δ = 44° 01' 10" (LT)
D = 4° 59' 54"
R = 1,146.28'
T = 463.35'
L = 880.67'
E = 90.11'
e = 7.8%
TR = 40'
SE RUN = 200'
PC STA = 1433+74.60
PT STA = 1442+55.27

STA 103+63.5 (WILLOW RD.)
PIPE CULVERT, CLASS D
TYPE 1 CULVERT PIPE 30"x84'
USFL 925.30, STA 103+51.6, 40.7' LT
DSFL 924.36, STA 103+75.1, 39.9' RT
W/ 2 END SECTIONS (STD 542401)

STA 102+51.7 (WILLOW RD)
PIPE CULVERT, CLASS D
TYPE 1 CULVERT PIPE, 15"x30'
USFL 930.14, STA 102+39.1, 28.4' RT
DSFL 928.81, STA 102+66.8, 40.1' RT
W/ 2 END SECTIONS (STD 542401)

STA 1437+23.38 (US 52/ IL 64) =
STA 103+14.15 (WILLOW RD.)



WILLOW RD, STA 101+00 TO STA 105+39.15

DATE	BY	REVISIONS
		1. PLAN
		2. PROFILE
		3. CHECKED
		4. APPROVED

DATE	BY	REVISIONS
		1. PROFILE
		2. CHECKED
		3. APPROVED

