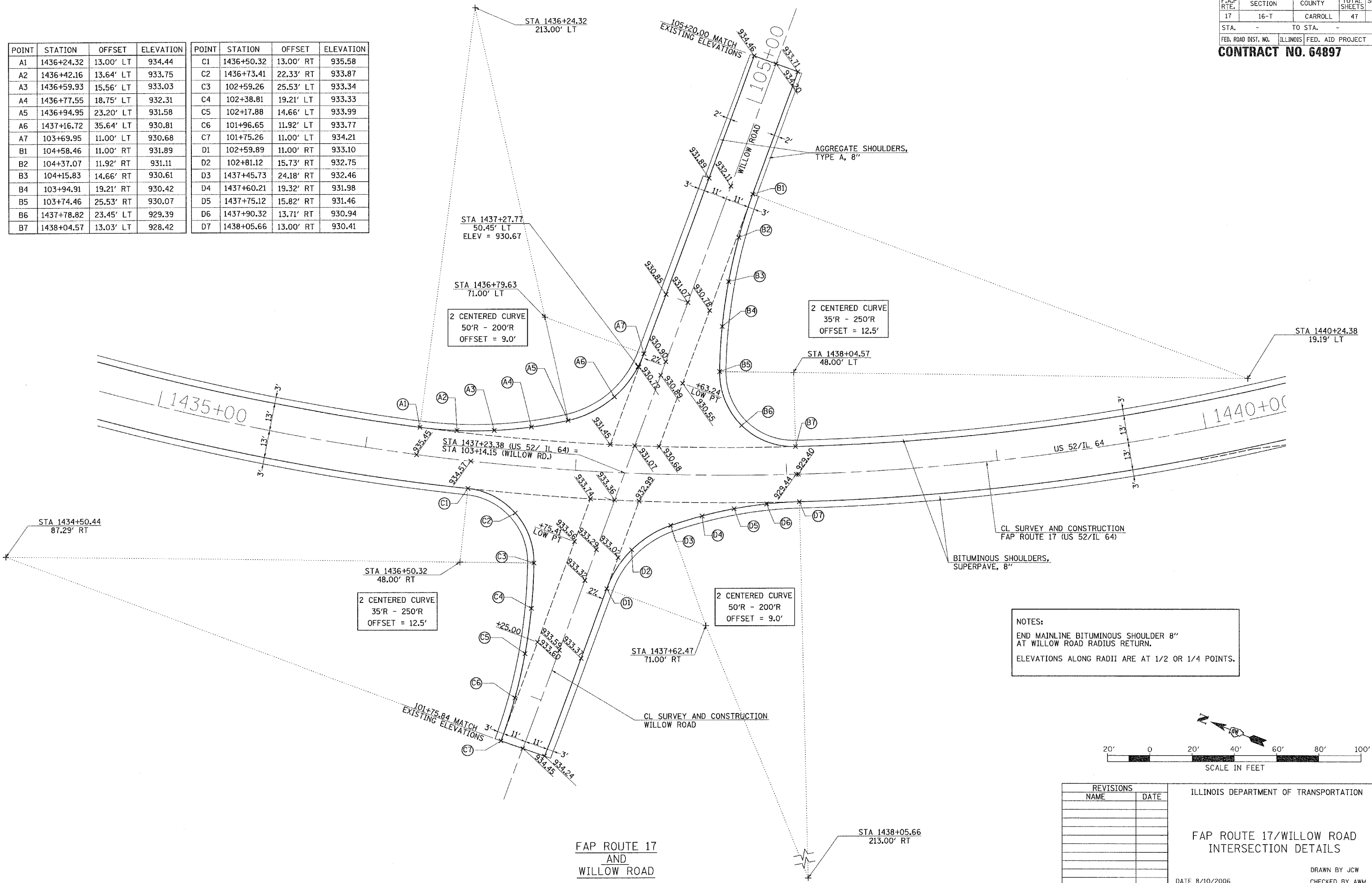


POINT	STATION	OFFSET	ELEVATION	POINT	STATION	OFFSET	ELEVATION
A1	1436+24.32	13.00' LT	934.44	C1	1436+50.32	13.00' RT	935.58
A2	1436+42.16	13.64' LT	933.75	C2	1436+73.41	22.33' RT	933.87
A3	1436+59.93	15.56' LT	933.03	C3	102+59.26	25.53' LT	933.34
A4	1436+77.55	18.75' LT	932.31	C4	102+38.81	19.21' LT	933.33
A5	1436+94.95	23.20' LT	931.58	C5	102+17.88	14.66' LT	933.99
A6	1437+16.72	35.64' LT	930.81	C6	101+96.65	11.92' LT	933.77
A7	103+69.95	11.00' LT	930.68	C7	101+75.26	11.00' LT	934.21
B1	104+58.46	11.00' RT	931.89	D1	102+59.89	11.00' RT	933.10
B2	104+37.07	11.92' RT	931.11	D2	102+81.12	15.73' RT	932.75
B3	104+15.83	14.66' RT	930.61	D3	1437+45.73	24.18' RT	932.46
B4	103+94.91	19.21' RT	930.42	D4	1437+60.21	19.32' RT	931.98
B5	103+74.46	25.53' RT	930.07	D5	1437+75.12	15.82' RT	931.46
B6	1437+78.82	23.45' LT	929.39	D6	1437+90.32	13.71' RT	930.94
B7	1438+04.57	13.03' LT	928.42	D7	1438+05.66	13.00' RT	930.41



REVISIONS	
NAME	DATE

ILLINOIS DEPARTMENT OF TRANSPORTATION
 FAP ROUTE 17/WILLOW ROAD
 INTERSECTION DETAILS
 DATE 8/10/2006
 DRAWN BY JCW
 CHECKED BY AWM

FAP ROUTE 17
 AND
 WILLOW ROAD