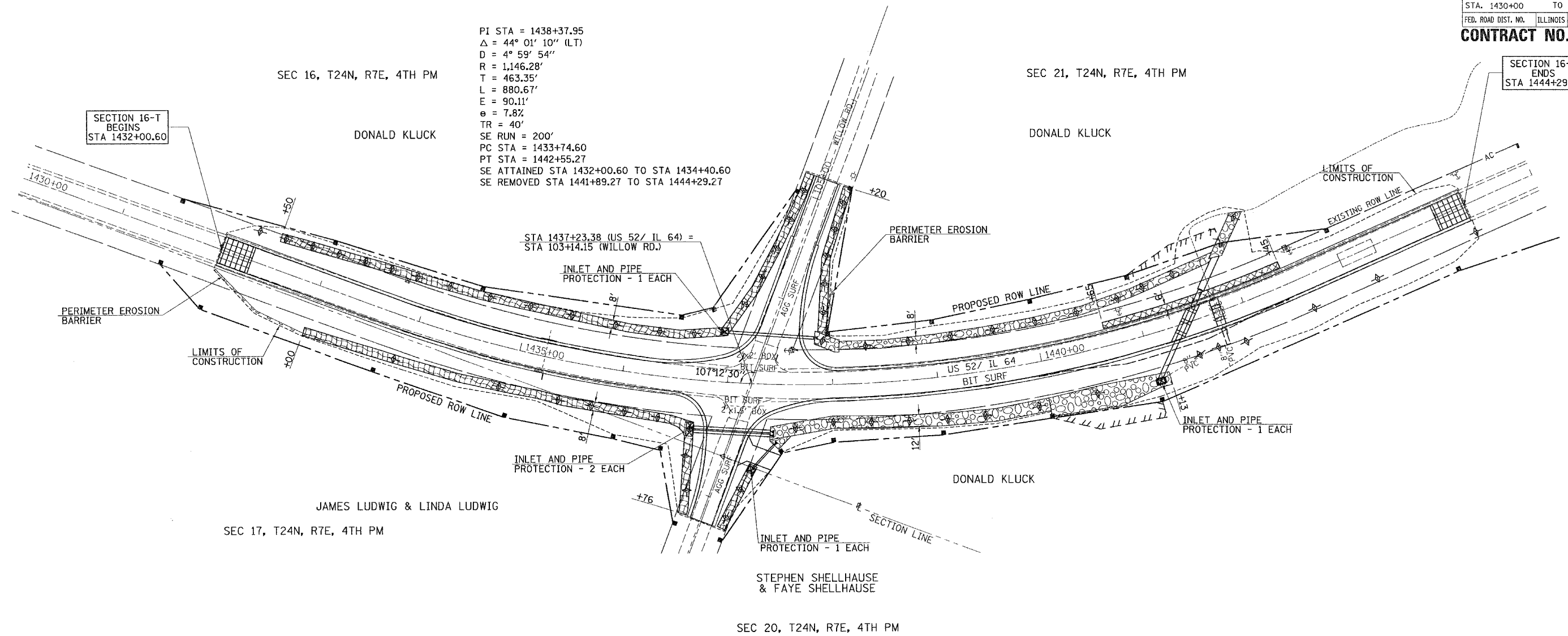


F.A.P. RTE.	SECTION	COUNTY	TOTAL SHEETS	SHEET NO.
17	16-T	CARROLL	47	17
STA. 1430+00		TO STA. 1445+00		
FED. ROAD DIST. NO.		ILLINOIS FED. AID PROJECT		

CONTRACT NO. 64897

SECTION 16-T
ENDS
STA 1444+29.27

PI STA = 1438+37.95
 $\Delta = 44^\circ 01' 10''$ (LT)
 $D = 4^\circ 59' 54''$
 $R = 1,146.28'$
 $T = 463.35'$
 $L = 880.67'$
 $e = 90.11'$
 $\theta = 7.8\%$
 $TR = 40'$
 $SE RUN = 200'$
 $PC STA = 1433+74.60$
 $PT STA = 1442+55.27$
 $SE ATTAINED STA 1432+00.60$ TO $STA 1434+40.60$
 $SE REMOVED STA 1441+89.27$ TO $STA 1444+29.27$



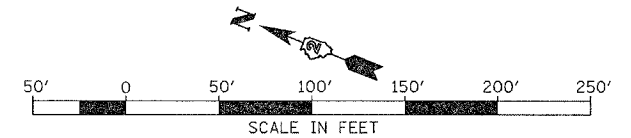
LEGEND FOR STORM WATER POLLUTION PREVENTION PLAN

ITEM	SYMBOL
TEMPORARY DITCH CHECKS (HAY OR STRAW BALE DITCH CHECKS OR APPROVED SUBSTITUTION)	
INLET PIPE PROTECTION (I&PP) (HAY OR STRAW BALE DITCH CHECKS OR APPROVED SUBSTITUTION)	
PERIMETER EROSION BARRIER	
EROSION CONTROL BLANKET	
STONE RIPRAP, CLASS A4	

GENERAL NOTES:

ALL ITEMS SHALL BE CONSTRUCTED AS SHOWN ON THIS SHEET, ON STANDARD 280001, AND AS DIRECTED BY THE ENGINEER.

THE CONTRACTOR SHALL INSTALL DITCH CHECKS AS DIRECTED BY THE ENGINEER. IN THE ENGINEER ELECTS TO UTILIZE FLUSH RIPRAP DITCH CHECKS IN LIEU OF TEMPORARY DITCH CHECKS AS SHOWN, THE SPACING SHOULD BE DOUBLED.



REVISIONS	
NAME	DATE

ILLINOIS DEPARTMENT OF TRANSPORTATION

**FAP ROUTE 17
EROSION CONTROL PLAN**

SCALE: VERT.
HORIZ.
DATE 8/10/2006

DRAWN BY TJD
CHECKED BY AWB