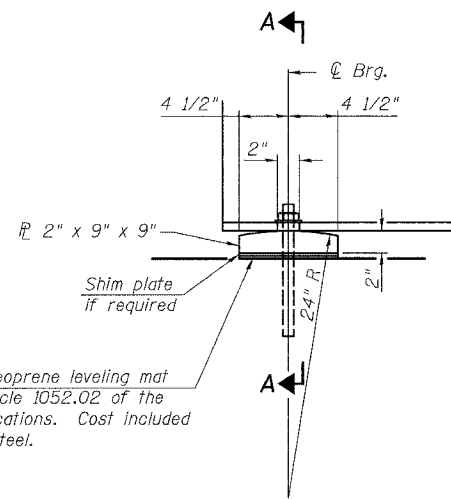


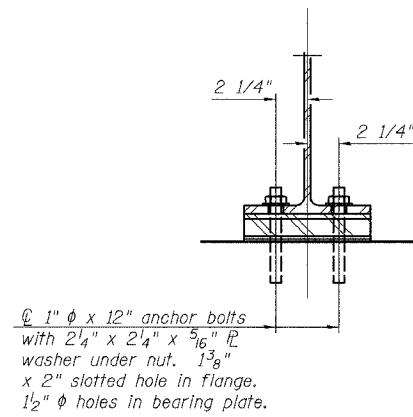
STATE OF ILLINOIS
DEPARTMENT OF TRANSPORTATION

| | | | | | |
|-----------------------|----------|------------------|--------|-----------|-------------|
| ROUTE NO. | SECTION | COUNTY | SHEETS | SHEET NO. | SHEET NO. 9 |
| FAS 2247 | 13X-BR-1 | BUREAU | 51 | 21 | 19 SHEETS |
| FED. ROAD DIST. NO. 7 | ILLINOIS | FED. AID PROJECT | | | |

Contract #64938

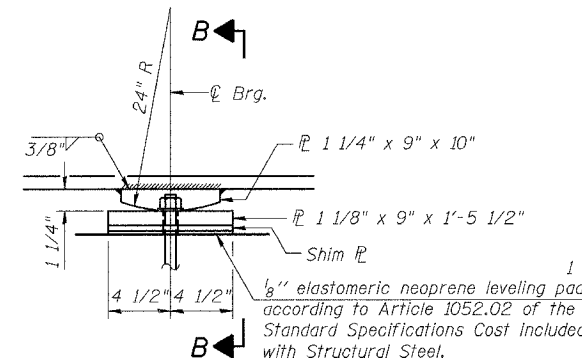


ELEVATION AT ABUTMENT

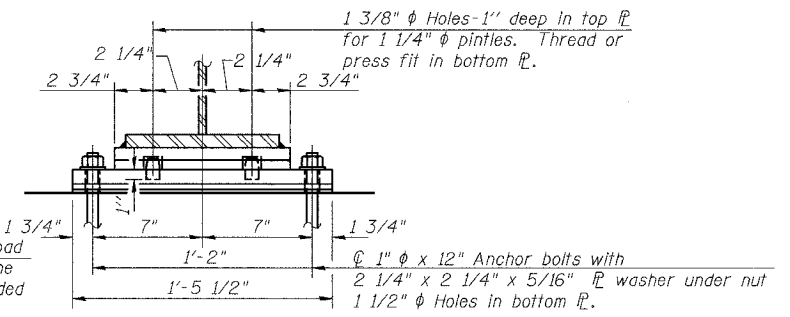


SECTION A-A

FIXED BEARING AT ABUTMENT
(12 REQUIRED)

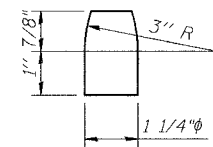


ELEVATION AT PIER



SECTION B-B

FIXED BEARING AT PIER
(12 REQUIRED)



PINTLE

Notes:
Anchor bolts at fixed bearings may be built into the masonry.
See sheet 13 of 19 for Anchor Bolt installation.

1/8" elastomeric neoprene leveling mat according to Article 1052.02 of the Standard Specifications. Cost included with Structural Steel.

1" ϕ x 12" anchor bolts with 2 1/4" x 2 1/4" x 5/16" ϕ washer under nut. 1 3/8" x 2" slotted hole in flange. 1 1/2" ϕ holes in bearing plate.

SHIM TABLE

| Beam | 1 | 2 | 3 | 4 | 5 | 6 |
|----------|---|---|---|---------------|---|---|
| W. Abut. | - | - | - | 1 ϕ 1/4" | - | - |
| Pier 1 | - | - | - | 1 ϕ 1/4" | - | - |
| Pier 2 | - | - | - | 1 ϕ 1/4" | - | - |
| E. Abut. | - | - | - | 1 ϕ 1/4" | - | - |

Shims at Abutments 9" x 9"
Shims at Piers 9" x 1'-5 1/2"

| | |
|----------|-----|
| DESIGNED | JDA |
| CHECKED | JKC |
| DRAWN | NQ |
| CHECKED | JDA |

BEARING DETAILS
FAS ROUTE 2247 (U.S. 6)
OVER BRUSH CREEK
SECTION 13X-BR-1
BUREAU COUNTY
STA. 1510+65.80
SN 006-0169