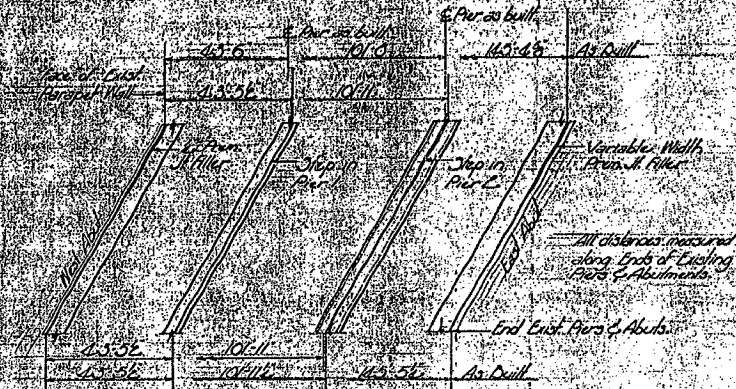


CONTRACT NO. 64938				
F.A.S. RTE.	SECTION	COUNTY	TOTAL SHEETS	SHEET NO.
2247	13X-BR-1	BUREAU	51	36
STA.	TO STA.			
FED. ROAD DIST. NO.	ILLINOIS	FED. AID PROJECT		

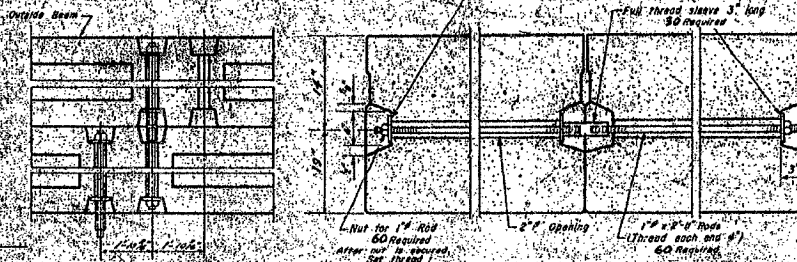
FOR INFORMATION ONLY 36 of 51

STATE OF ILLINOIS
DEPARTMENT OF PUBLIC WORKS & BUILDINGS
DIVISION OF HIGHWAYS

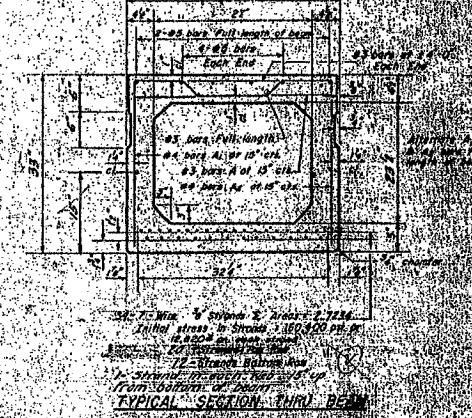
No. 1318	Date	Author	Scale	Project
11-10-64	12-31-64	Burton	1/2"	2247-13X



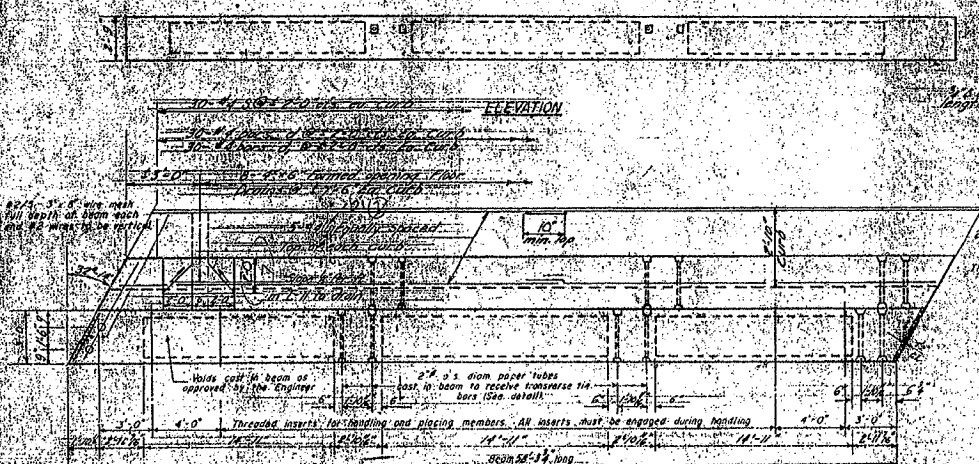
LAYOUT OF PIER STEPS



TYPICAL TRANSVERSE TIE ASSEMBLY
Cost and assembly of transverse tie is included in unit price bid for Precast Prestressed Concrete Bridge Deck.

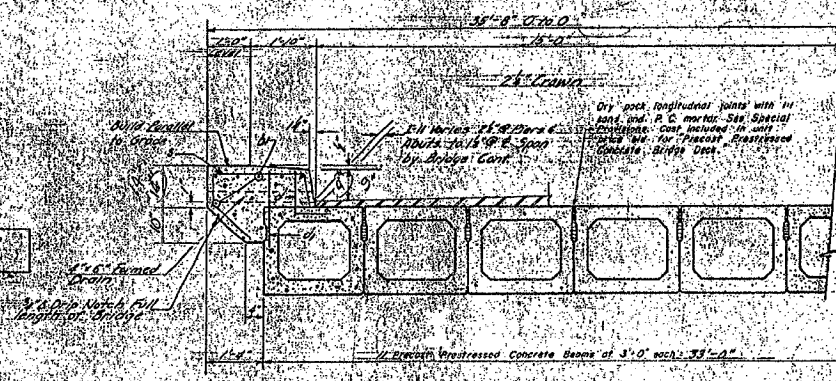


TYPICAL SECTION THRU BEAM
Cost and assembly of transverse tie is included in unit price bid for Precast Prestressed Concrete Bridge Deck.

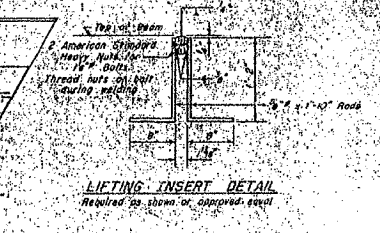


DESIGNED Abraham T. Elbert
CHECKED J. J. Johnson
EXAMINED J. J. Johnson
PASSED J. J. Johnson
SEPT 25 1967

PLAN
GENERAL NOTES
For item, Precast Prestressed Concrete Bridge Deck, See Special Provisions. Strand used in prestressing element shall be non-jalvanized high strength stress-relieved 7 wire strand. The nominal diameter of the strand shall not exceed 4 1/2\"/>



HALF CROSS SECTION



LIFTING INSERT DETAIL
Required for shown or approved equal

BILL OF MATERIALS

QTY	UNIT	DESCRIPTION	PRICE	TOTAL
1	EA	CONCRETE BEAM	1500	1500
1	EA	PURCHASE PRESTRESSED CONCRETE BRIDGE DECK	750	750
1	EA	PIER	1000	1000
1	EA	TRANSVERSE TIE ASSEMBLY	100	100
1	EA	CONCRETE	1500	1500
1	EA	REINFORCEMENT BARS	150	150
1	EA	LIFTING INSERT	100	100
1	EA	STRAPELON STRAP	100	100
1	EA	CONCRETE BEAM	1500	1500
1	EA	PURCHASE PRESTRESSED CONCRETE BRIDGE DECK	750	750
1	EA	PIER	1000	1000
1	EA	TRANSVERSE TIE ASSEMBLY	100	100
1	EA	CONCRETE	1500	1500
1	EA	REINFORCEMENT BARS	150	150
1	EA	LIFTING INSERT	100	100
1	EA	STRAPELON STRAP	100	100

SUPERSTRUCTURE
SPAN 2
R.A. 21-134
SIOUX COUNTY
IOWA

REVISIONS	
NAME	DATE

ILLINOIS DEPARTMENT OF TRANSPORTATION
FOR INFORMATION ONLY
SCALE: VERT. DRAWN BY
HORIZ. CHECKED BY
DATE