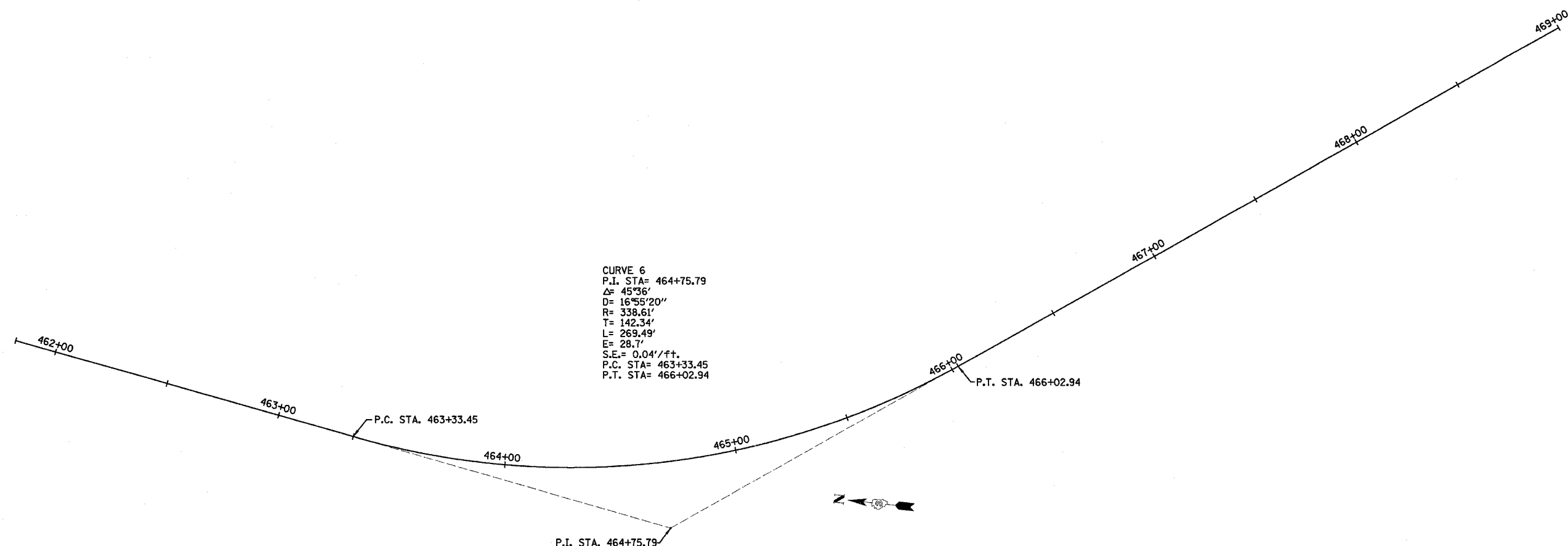
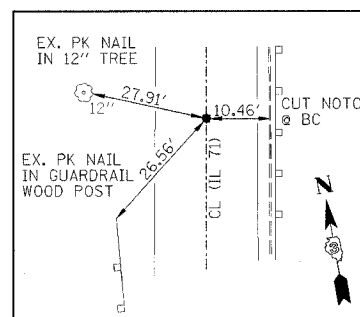


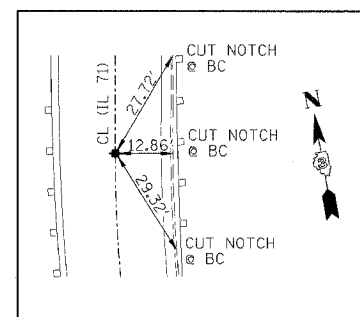
F.A.P. RTE.	SECTION	COUNTY	TOTAL SHEETS	SHEET NO.
627	(I-1) BR & I	LA SALLE	106	15
STA.	TO STA.			
FED. ROAD DIST. NO.	ILLINOIS	FED. AID PROJECT		



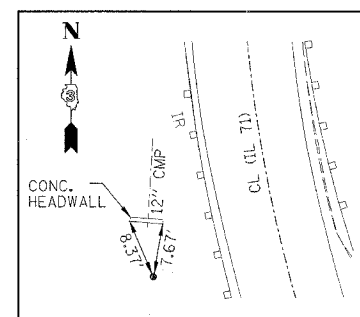
CURVE 6
 P.I. STA= 464+75.79
 $\Delta = 45^{\circ}36'$
 $D = 16^{\circ}55'20''$
 $R = 338.61'$
 $T = 142.34'$
 $L = 269.49'$
 $E = 28.7'$
 $S.E. = 0.04'/ft.$
 P.C. STA= 463+33.45
 P.T. STA= 466+02.94



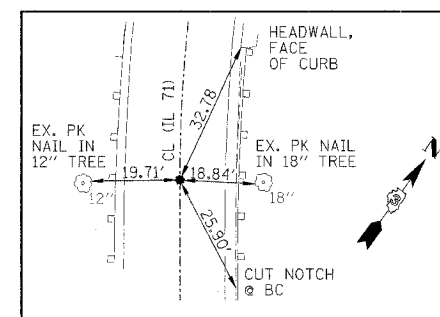
STA. 462+00.00 SPINDLE NAIL ON TANGENT



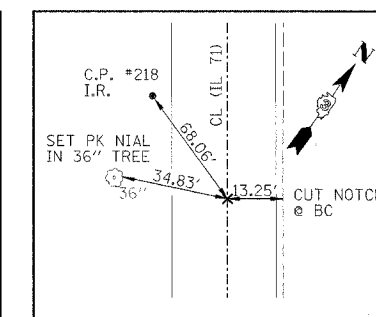
P.C. STA. 463+33.45 (CURVE *6) SPINDLE NAIL



P.I. STA. 464+75.79 (CURVE *6) IR



P.T. STA. 466+02.94 (CURVE *6) SPINDLE NAIL



STA. 469+00.00 EX PK NAIL ON TANGENT

TRANSIT LINE LOCATION & TIES
 STRUCTURE 050-0239
 STA. 462+46 TO STA. 467+62

IL ROUTE 71
 OVER TRIBUTARY TO ILLINOIS RIVER
 F.A.P. ROUTE 627 - SEC. (I-1) BR & I
 LA SALLE COUNTY

DESIGNED BY MSW	 3700 McGraw Drive Bloomington, Illinois 61704 309/888-8436, 309/888-3671 fax	FILE NO. 24-6772
DRAWN BY DJM		DATE 05/12/06
CHECKED BY MSW		SHEET NO. 15 of 106