

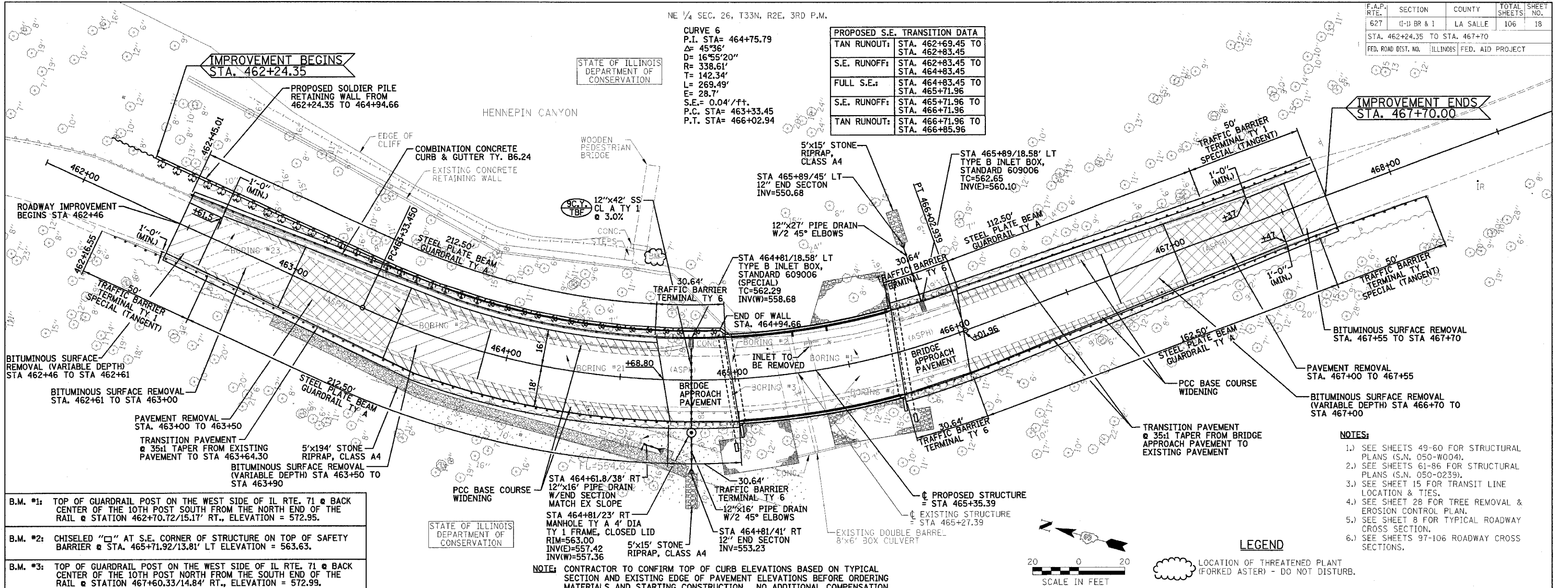
F.A.P. RTE.	SECTION	COUNTY	TOTAL SHEETS	SHEET NO.
627	(I-1) BR & I	LA SALLE	106	18
STA. 462+24.35 TO STA. 467+70				
FED. ROAD DIST. NO. ILLINOIS FED. AID PROJECT				

NE 1/4 SEC. 26, T33N, R2E, 3RD P.M.

**CURVE 6**  
 P.I. STA= 464+75.79  
 Δ= 45°36'  
 D= 16°55'20"  
 R= 338.61'  
 T= 142.34'  
 L= 269.49'  
 E= 28.7'  
 S.E.= 0.04'/ft.  
 P.C. STA= 463+33.45  
 P.T. STA= 466+02.94

**PROPOSED S.E. TRANSITION DATA**

TAN RUNOUT:	STA. 462+69.45 TO STA. 462+83.45
S.E. RUNOFF:	STA. 462+83.45 TO STA. 464+83.45
FULL S.E.:	STA. 464+83.45 TO STA. 465+71.96
S.E. RUNOFF:	STA. 465+71.96 TO STA. 466+71.96
TAN RUNOUT:	STA. 466+71.96 TO STA. 466+85.96



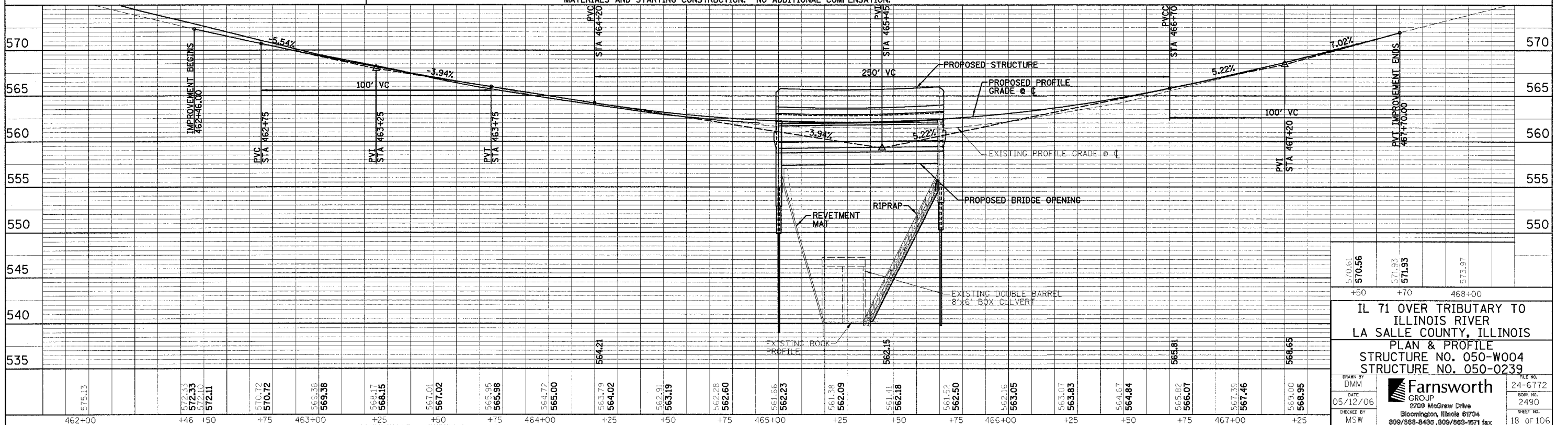
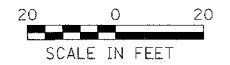
- B.M. #1: TOP OF GUARDRAIL POST ON THE WEST SIDE OF IL RTE. 71 @ BACK CENTER OF THE 10TH POST SOUTH FROM THE NORTH END OF THE RAIL @ STATION 462+70.72/15.17' RT., ELEVATION = 572.95.
- B.M. #2: CHISELED "C" AT S.E. CORNER OF STRUCTURE ON TOP OF SAFETY BARRIER @ STA. 465+71.92/13.81' LT ELEVATION = 563.63.
- B.M. #3: TOP OF GUARDRAIL POST ON THE WEST SIDE OF IL RTE. 71 @ BACK CENTER OF THE 10TH POST NORTH FROM THE SOUTH END OF THE RAIL @ STATION 467+60.33/14.84' RT., ELEVATION = 572.99.

**NOTE:** CONTRACTOR TO CONFIRM TOP OF CURB ELEVATIONS BASED ON TYPICAL SECTION AND EXISTING EDGE OF PAVEMENT ELEVATIONS BEFORE ORDERING MATERIALS AND STARTING CONSTRUCTION. NO ADDITIONAL COMPENSATION.

- NOTES:**
- SEE SHEETS 49-60 FOR STRUCTURAL PLANS (S.N. 050-W004).
  - SEE SHEETS 61-86 FOR STRUCTURAL PLANS (S.N. 050-0239).
  - SEE SHEET 15 FOR TRANSIT LINE LOCATION & TIES.
  - SEE SHEET 28 FOR TREE REMOVAL & EROSION CONTROL PLAN.
  - SEE SHEET 8 FOR TYPICAL ROADWAY CROSS SECTION.
  - SEE SHEETS 97-106 ROADWAY CROSS SECTIONS.

**LEGEND**

LOCATION OF THREATENED PLANT (FORKED ASTER) - DO NOT DISTURB.



IL 71 OVER TRIBUTARY TO ILLINOIS RIVER  
 LA SALLE COUNTY, ILLINOIS  
 PLAN & PROFILE  
 STRUCTURE NO. 050-W004  
 STRUCTURE NO. 050-0239

570.61	570.56	571.93	571.93	573.97
+50	+70	468+00		

DRAWN BY: DMM  
 DATE: 05/12/06  
 CHECKED BY: MSW  
**Farnsworth GROUP**  
 2709 McGraw Drive  
 Bloomington, Illinois 61704  
 309/893-8485, 309/893-1671 fax  
 FILE NO. 24-6772  
 BOOK NO. 2490  
 SHEET NO. 18 OF 106  
 PP-2