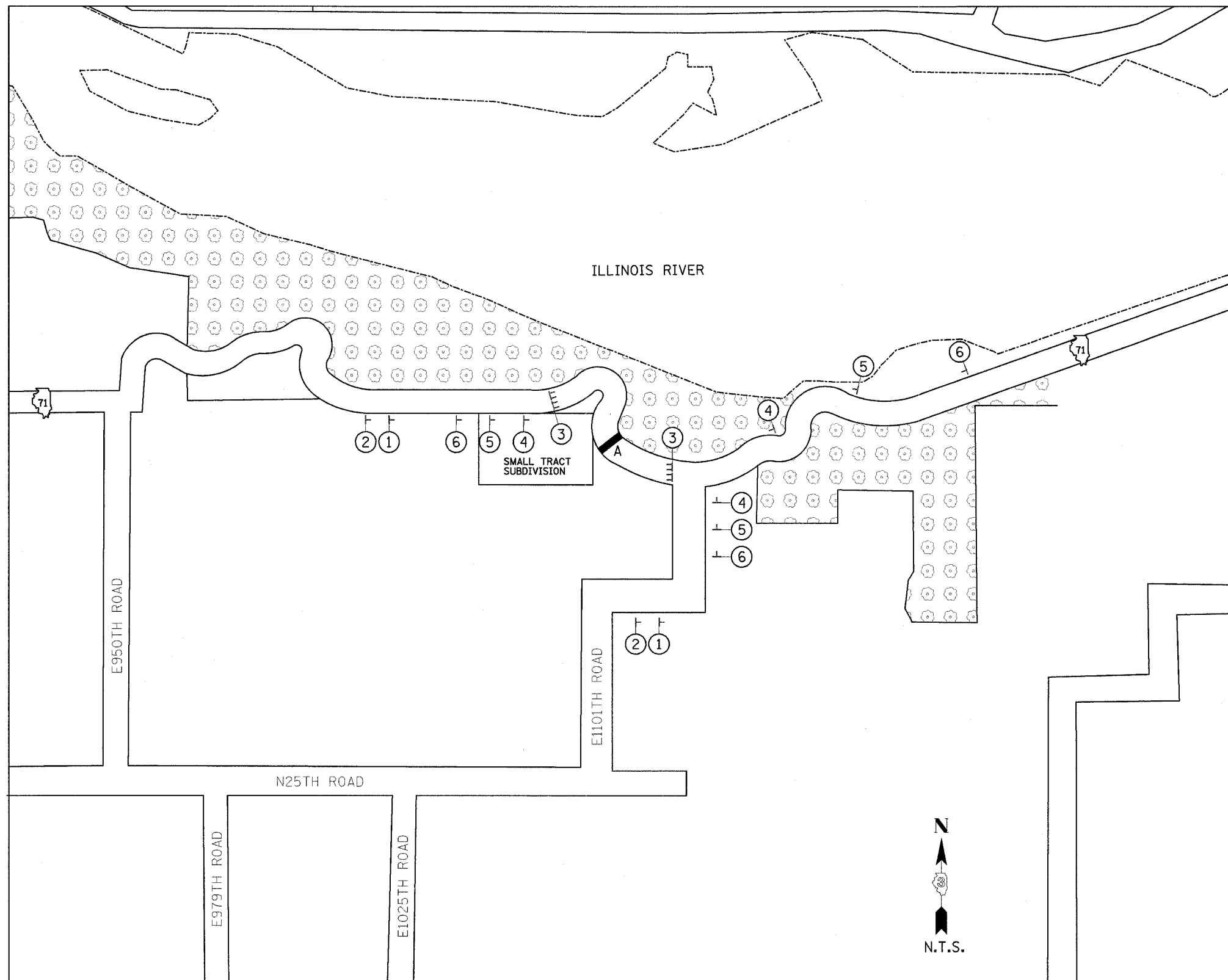


F.A.P. RTE.	SECTION	COUNTY	TOTAL SHEETS	SHEET NO.
627	(I-1) BR & I	LA SALLE	106	19
STA.	TO STA.			
FED. ROAD DIST. NO.	ILLINOIS FED. AID PROJECT			

**LEGEND**

- XXXX TO BE COVERED
- FLASHING LIGHT
- ◇ 18"x8" ORANGE FLAG
- TT TYPE III BARRICADE
- DIRECTION ARROW CHANGE

- ① **ROAD CLOSED TO THRU TRAFFIC**  
R11-4  
60x30
- ② **ROAD WORK AHEAD**  
W20-1  
36x36
- ③ **ROAD CLOSED**  
R11-2  
48x30
- ④ **ROAD CLOSED 500 FT**  
W20-3  
36x36
- ⑤ **ROAD CLOSED 1000 FT**  
W20-3  
36x36
- ⑥ **ROAD CLOSED 1500 FT**  
W20-3  
36x36



**STRUCTURE LOCATIONS**  
A.) S.N. 050-0239 @ STA. 465+35.39

**GENERAL NOTES:**

- 1.) ONLY SIGNS THAT ARE TO BE CHANGED OR ADDED ARE SHOWN ON THIS MAP.
- 2.) ALL SIGNS SHALL BE POST MOUNTED.
- 3.) ALL TYPE III BARRICADES SHALL BE EQUIPPED WITH 2 (TWO) TYPE A BI-DIRECTIONAL FLASHING LIGHTS.

**PHASE I SIGNAGE**

IL ROUTE 71  
OVER TRIBUTARY TO ILLINOIS RIVER  
F.A.P. ROUTE 627 - SEC. (I-1) BR & I  
LA SALLE COUNTY

DESIGNED BY MSW	 2700 McFraw Drive Bloomington, Illinois 61704 309/883-8636, 309/883-9771 fax	FILE NO. 24-6772
DRAWN BY DJM		DATE 05/12/06
CHECKED BY MSW		SHEET NO. 19 OF 106