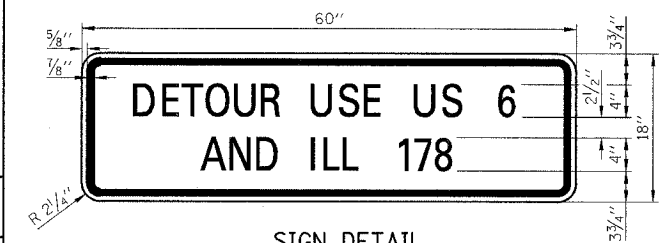
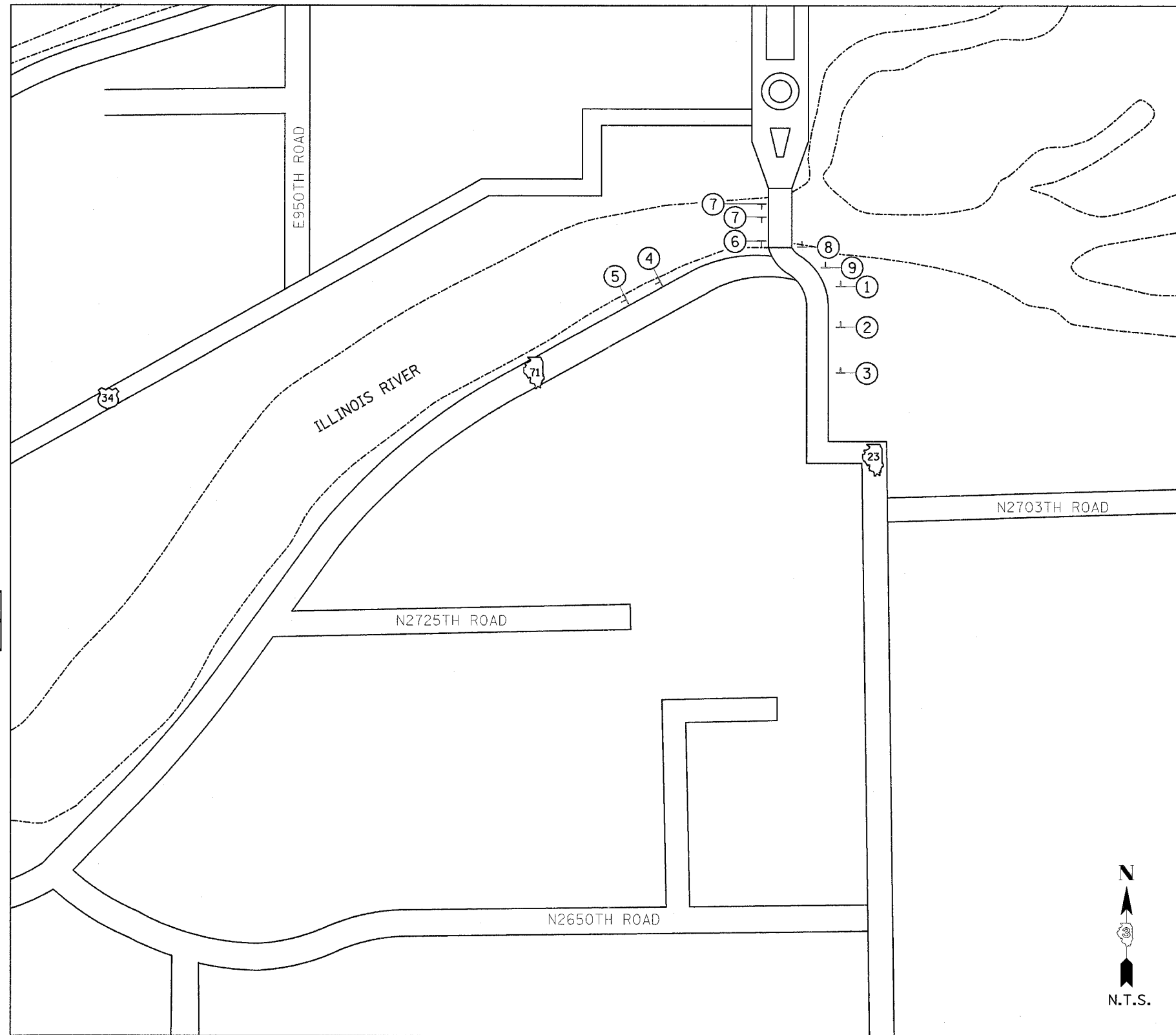


F.A.P. RTE.	SECTION	COUNTY	TOTAL SHEETS	SHEET NO.
627	(1-1) BR & I	LA SALLE	106	23
STA.		TO STA.		
FED. ROAD DIST. NO.	ILLINOIS FED. AID PROJECT			

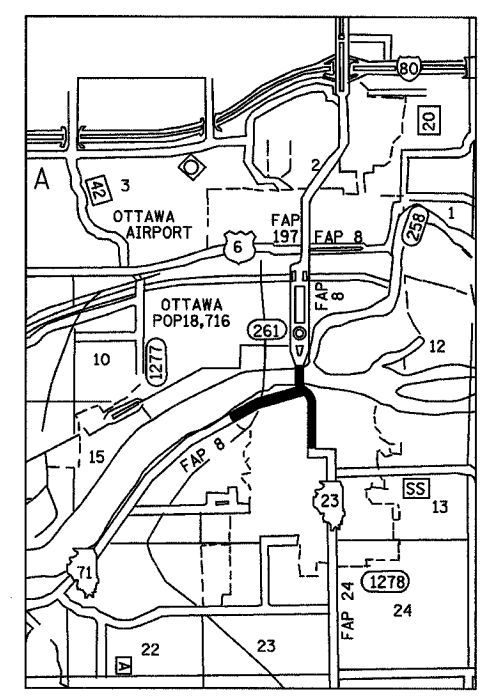
- LEGEND**
- XXXX TO BE COVERED
 - FLASHING LIGHT
 - ◇ 18"x8" ORANGE FLAG
 - TT TYPE III BARRICADE
 - DIRECTION ARROW CHANGE

- ① 71 23
- ② OSWEGO
OGLESBY
STARVED ROCK
- ③ DETOUR
AHEAD
W20-2
36x36
- ④ ROAD CLOSED
6 MILES AHEAD
LOCAL TRAFFIC ONLY
71
M1-1100
24x24
R11-3a
60x30
- ⑤ X-hatched sign
- ⑥ SOUTH
STREATOR
WEST
OGLESBY
STARVED ROCK
23
- ⑦ 23
- ⑧ DETOUR
71
M1-1100
24x24
M4-8
24x12
M6-3
21x15
- ⑨ ROAD CLOSED
TO
THRU TRAFFIC
DETOUR USE US 6
AND ILL 178
71
M1-1100
24x24
R11-4
60x30
SEE "SIGN
DETAIL"



SIGN DETAIL
SIGN PANEL - TYPE 1

- NOTES:**
- 1.) TOTAL AREA = 7.5 SQ. FT.
 - 2.) 4" SERIES C LETTERS
 - 3.) LEGEND = BLACK
 - 4.) BACKGROUND = ORANGE



LOCATION MAP



JUNCTION IL 23 & IL 71

GENERAL NOTES:

- 1.) ONLY SIGNS THAT ARE TO BE CHANGED OR ADDED ARE SHOWN ON THIS MAP.
- 2.) ALL SIGNS TO BE POST MOUNTED.

DETOUR MAP

IL ROUTE 71
OVER TRIBUTARY TO ILLINOIS RIVER
F.A.P. ROUTE 627 - SEC. (1-1) BR & I
LA SALLE COUNTY

DESIGNED BY MSW	 3708 McGraw Drive Bloomington, Illinois 61704 309/838-8425, 309/858-9871 fax	FILE NO. 24-6772
DRAWN BY DJM		DATE 05/12/06
CHECKED BY MSW		SHEET NO. 23 of 106