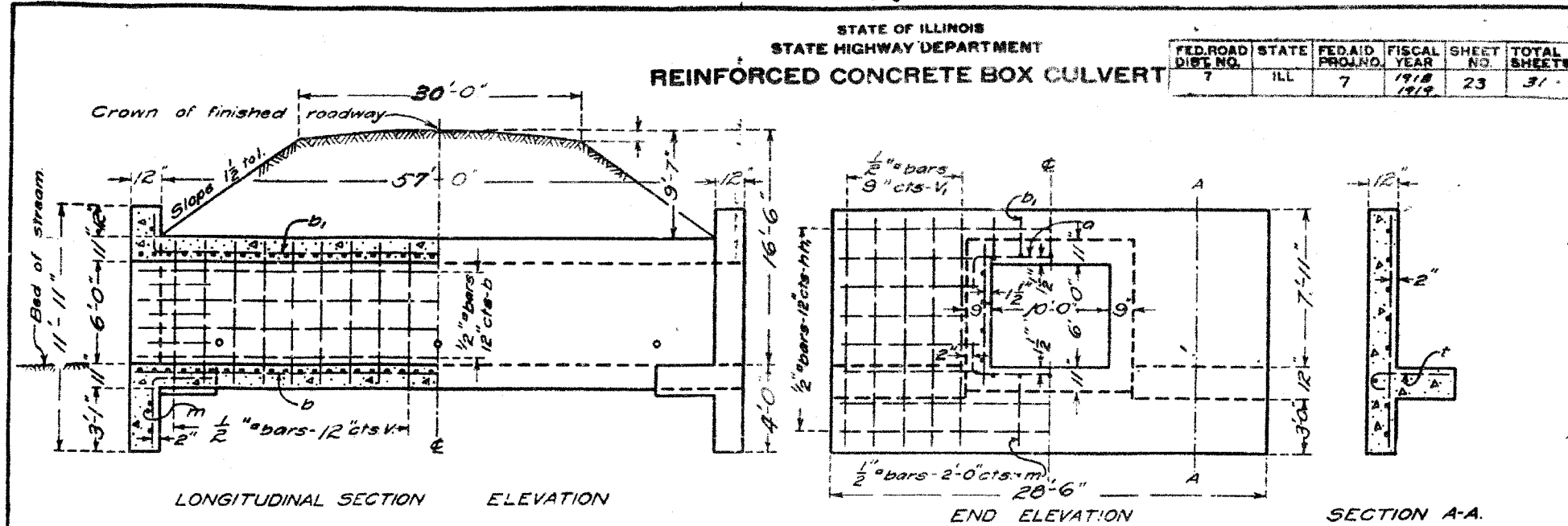


F.A.P. RTE.	SECTION	COUNTY	TOTAL SHEETS	SHEET NO.
627	(I-1) BR & I	LA SALLE	106	34
STA.	TO STA.			
FED. ROAD DIST. NO.	ILLINOIS	FED. AID PROJECT		

SHEET NO. A6
OF 6 SHEETS

STATE OF ILLINOIS
STATE HIGHWAY DEPARTMENT
REINFORCED CONCRETE BOX CULVERT

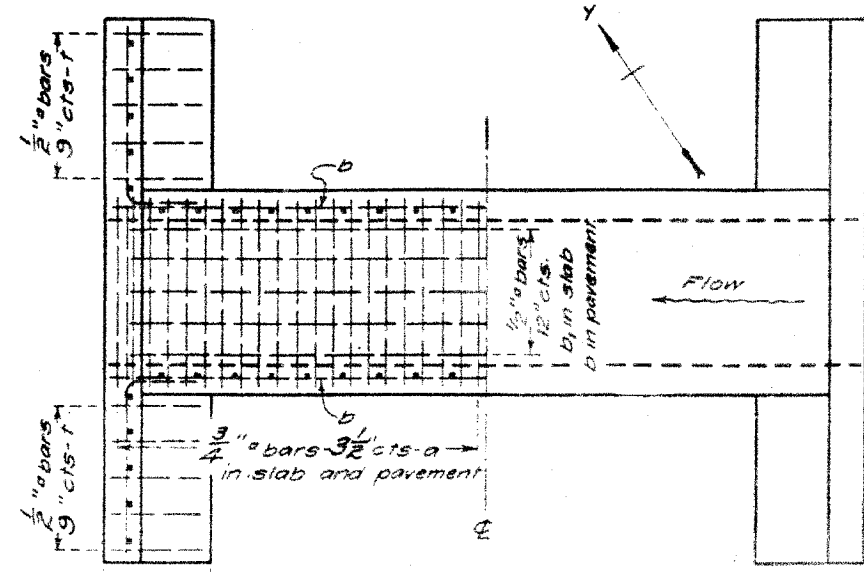
FED. ROAD DIST. NO.	STATE	FED. AID PROJ. NO.	FISCAL YEAR	SHEET NO.	TOTAL SHEETS
7	ILL	7	1918 1919	23	31



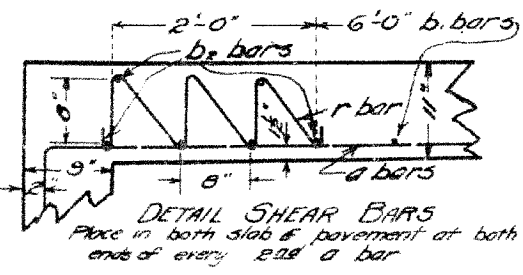
LONGITUDINAL SECTION ELEVATION

END ELEVATION SECTION A-A

SHOWING REINFORCEMENT SHOWING OUTLINES.



PLAN SHOWING REINFORCEMENT SHOWING OUTLINES.



DETAIL SHEAR BARS
Place in both slab & pavement at both ends of every 2nd a bar

Elev. Crown = 183.60
B.M. # 30 Highest point E side
N.H. Boulder 50' E Sta. 394+40

STA 393+80
FEDERAL AID
PROJECT 7 SECTION I
MORRIS HENRY ROAD
LA SALLE CO.

BILL OF MATERIAL.

Bars	No.	Size	Length
v	116	1/2"	7'-9"
v ₁	48	1/2"	11'-9"
h	28	1/2"	10'-0"
m	20	1/2"	15'-6"
a	396	3/4"	13'-6"
b	45	1/2"	21'-0"
b ₁	15	1/2"	21'-6"
b ₂	72	3/4"	21'-0"
t	48	1/2"	4'-9"
m	5	1/2"	5'-6"
r	396	3/4"	5'-6"
Steel-Lbs			15040
Concrete - Cu Yds			885

Class A concrete to be used throughout. Proportions-1:2 1/2:4.
Use "m" bars in downstream headwall only.

FOR INFORMATIONAL
USE ONLY

DESIGNED BY	J.M.L.
DRAWN BY	D.J.M.
CHECKED BY	M.S.W.
EXAMINED	[Signature]
APPROVED	[Signature]
ENGINEER OF DESIGN.	[Signature]

Revised 11-11-19
[Signature]
ENGINEER OF DESIGN.

SBI RT 7-A

663

EXISTING PLANS
IL ROUTE 71
OVER TRIBUTARY TO ILLINOIS RIVER
F.A.P. ROUTE 627 - SEC. (I-1) BR & I
LA SALLE COUNTY
STATION 393+00.00