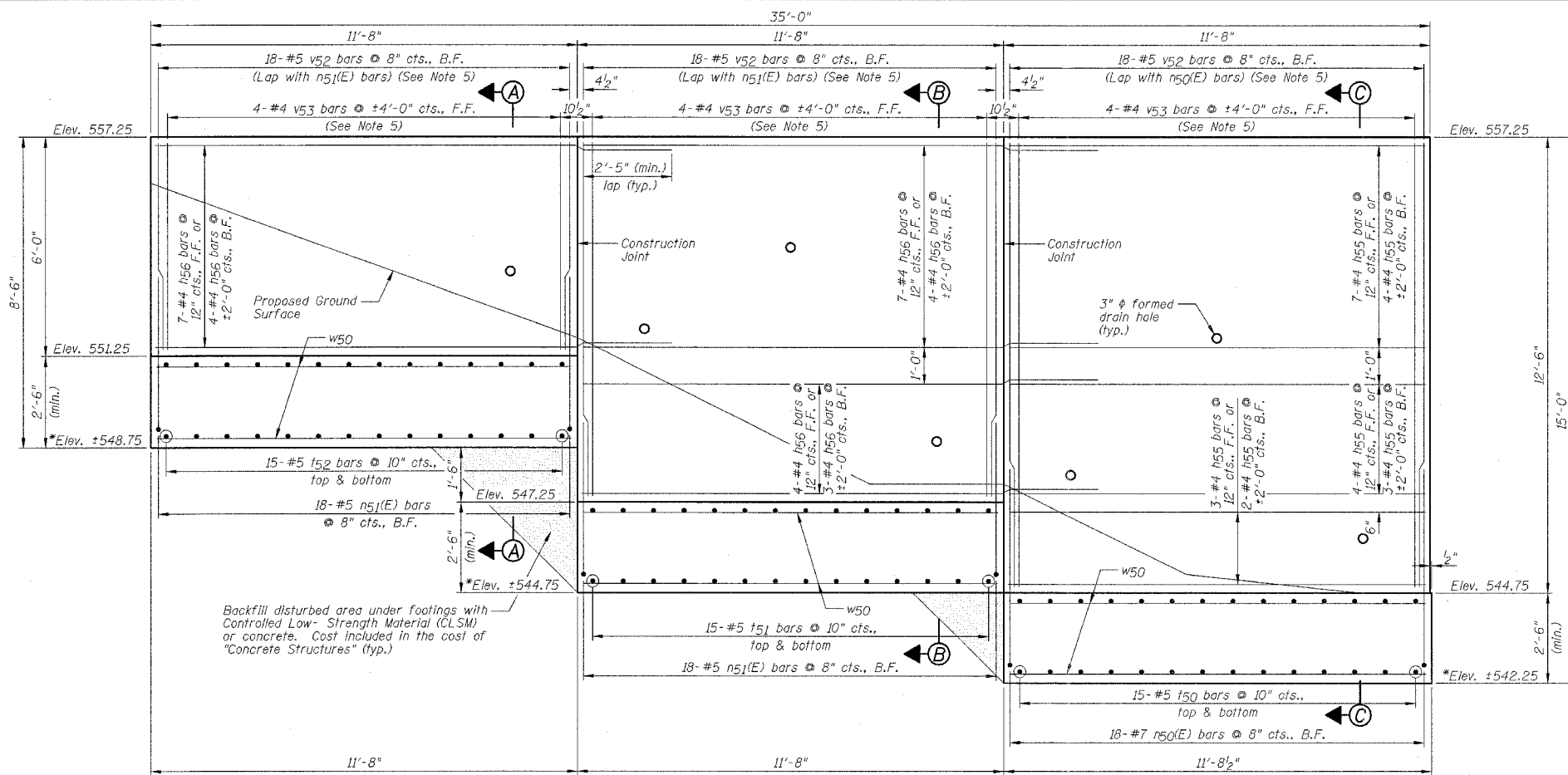
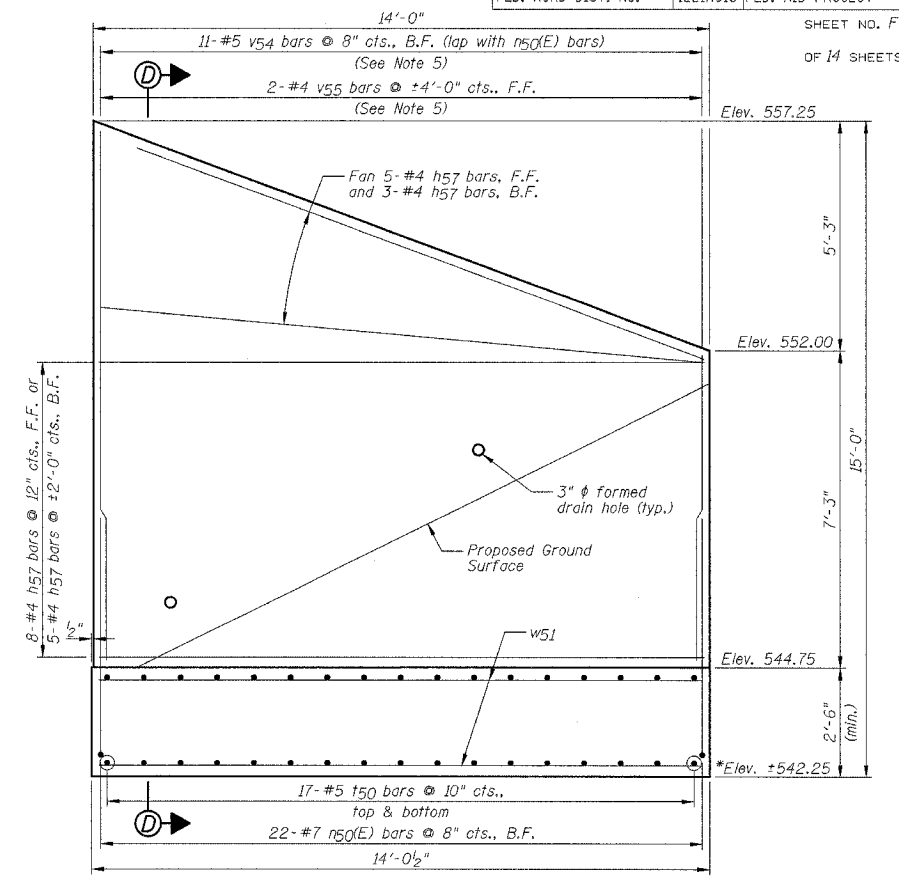


F.A.P. RTE.	SECTION	COUNTY	TOTAL SHEETS	SHEET NO.
627	(I-1) BR & I	LA SALLE	106	41
STA.	TO STA.			
FED. ROAD DIST. NO.	ILLINOIS	FED. AID PROJECT		

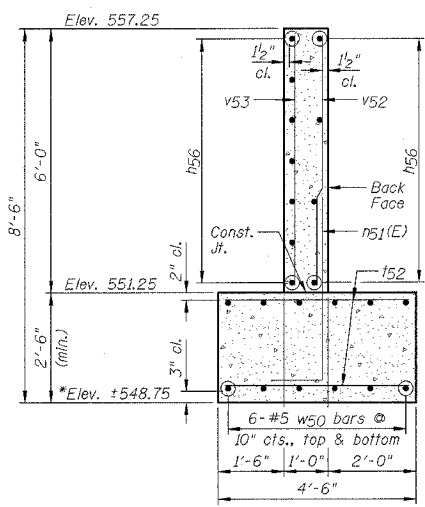
SHEET NO. F7  
OF 14 SHEETS



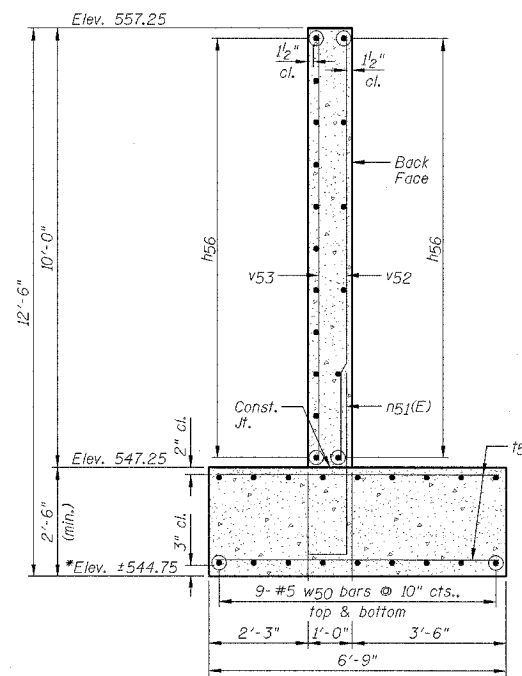
**NORTHEAST WINGWALL ELEVATION**



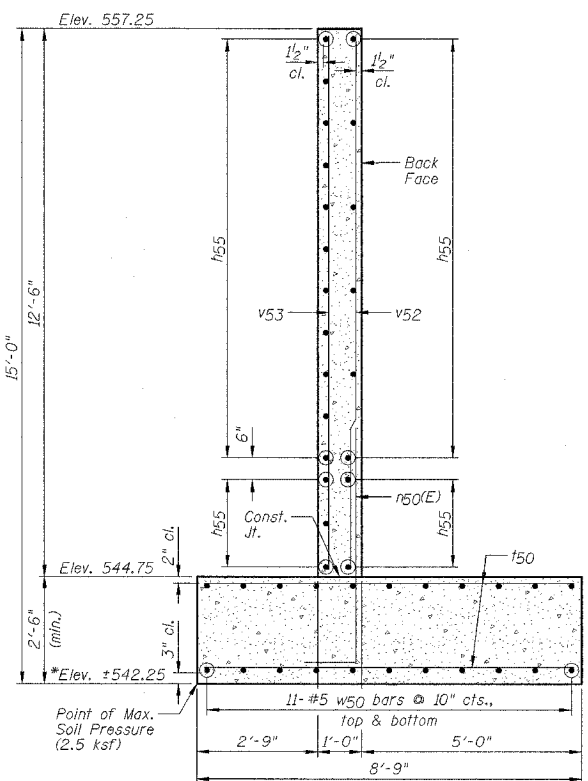
**NORTHWEST WINGWALL ELEVATION**



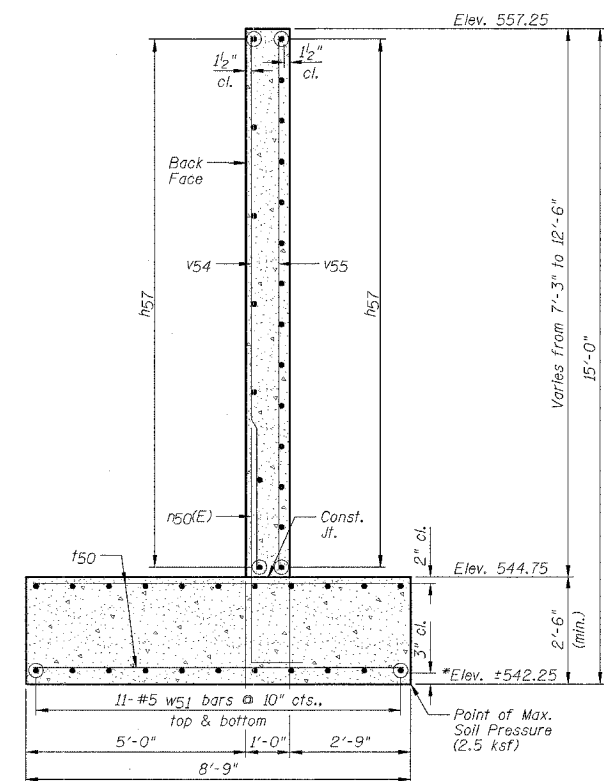
**SECTION A-A**



**SECTION B-B**



**SECTION C-C**



**SECTION D-D**

**NOTES:**

- 1) Work this sheet with Sheets F1 thru F6, F8 and F11.
- 2) See Sheet F8 for Bill of Materials.
- 3) B.F. denotes Back Face, F.F. & denotes Front Face.
- 4) The Footings shall be set 2'-0" minimum into sound rock. The thickness of the Footings shall be increased if required to maintain this embedment.
- 5) Reinforcement bars designated (E) shall be epoxy coated.
- 6) Order v52, v53, v54 & v55 bars full length. Cut according to Bar Cutting Diagram on Sheet F8. Use remainder of v52, v53, v54 & v55 bars in same face of wingwall.
- 7) Calculated Maximum Bearing Pressure = 2.5 ksf.

**NORTH WINGWALLS**  
**IL ROUTE 71**  
**OVER TRIBUTARY TO ILLINOIS RIVER**  
**F.A.P. ROUTE 627 - SEC. (I-1) BR & I**  
**LA SALLE COUNTY**  
**STATION 416+44.62**  
**STRUCTURE NO. 050-C804**

DESIGNED BY J.M.L.	<p>3709 Midway Drive Bloomington, Illinois 61704 304/853-8455, 304/853-0771 fax</p>	FILE NO. 24-6772
DRAWN BY D.J.M.		DATE 05-12-06
CHECKED BY M.S.W.		SHEET NO. 41 of 106