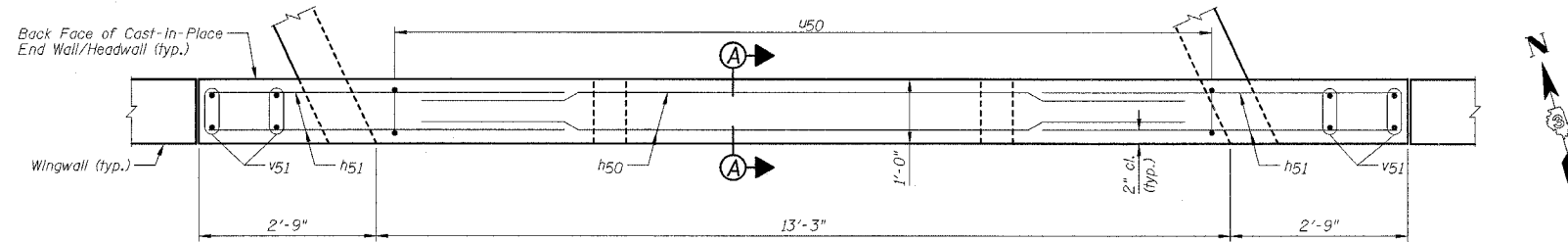
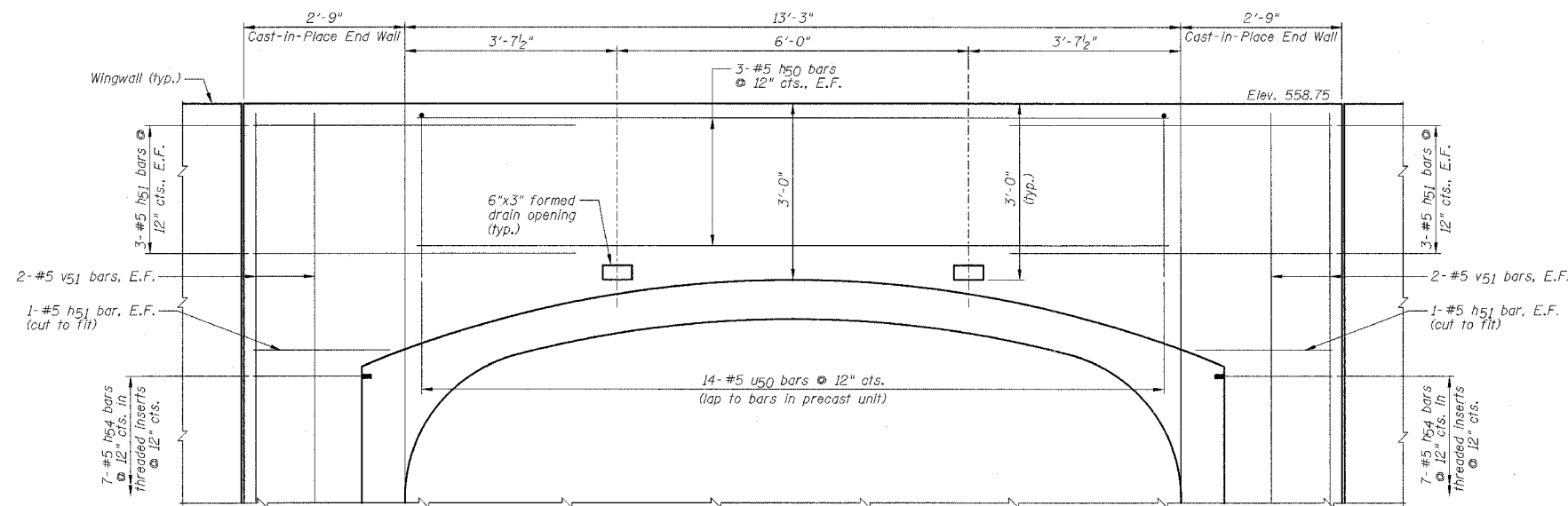


F.A.P. RTE.	SECTION	COUNTY	TOTAL SHEETS	SHEET NO.
627	(I-1) BR & I	LA SALLE	106	44
STA.	TO STA.			
FED. ROAD DIST. NO.	ILLINOIS FED. AID PROJECT			

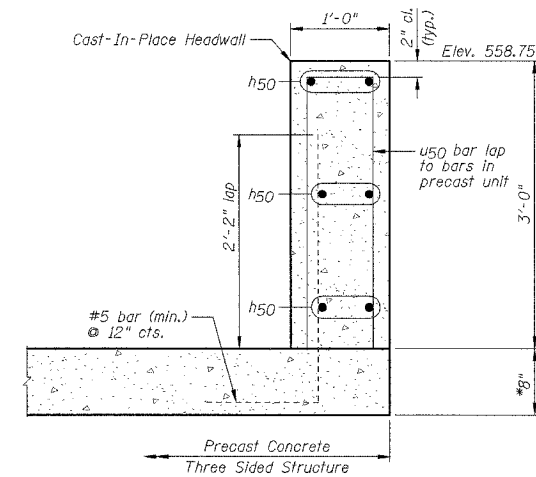
SHEET NO. F10
OF 14 SHEETS



SOUTH HEADWALL PLAN



SOUTH HEADWALL ELEVATION



SECTION A-A
*Confirm thickness with Precaster.

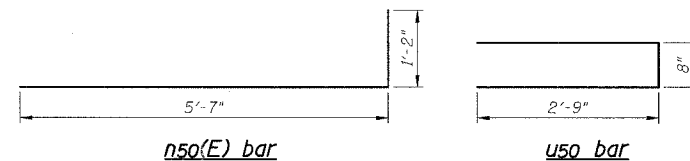
**SOUTH HEADWALL & WINGWALLS
BILL OF MATERIALS**

Bar	No.	Size	Length	Shape
h50	6	#5	12'-11"	—
h51	16	#5	5'-6"	—
h54	14	#5	3'-0"	—
h58	18	#4	11'-2"	—
h59	36	#4	25'-1"	—
h50(E)	76	#7	6'-9"	—
h53	138	#5	7'-2"	—
u50	14	#5	6'-2"	—
v51	90	#5	10'-4"	—
v56	18	#4	10'-4"	—
w52	40	#5	25'-0"	—
w53	20	#5	8'-2"	—

Item	Unit	Quantity
Structure Excavation	Cu. Yd.	150
Rock Excavation For Structures	Cu. Yd.	39
Concrete Structures	Cu. Yd.	65.7
Reinforcement Bars	Pound	4300
Reinforcement Bars, Epoxy Coated	Pound	1050

NOTES:

- 1.) Work this sheet with Sheets F1 thru F6, F9 and F11.
- 2.) B.F. denotes Back Face, F.F. denotes Front Face & E.F. denotes Each Face.
- 3.) Reinforcement bars designated (E) shall be epoxy coated.
- 4.) h51, h54 and u50 bars shall be field cut and bent as required.
- 5.) The threaded inserts for the h55 bars shall be cast into the precast unit.
- 6.) The cost of threaded inserts shall be included in the cost of "Three Sided Precast Concrete Structures, 12'x7'".



DESIGNED BY J.M.L.	<p>2700 McGraw Drive Bloomington, Illinois 61704 302/953-3425, 300/323-1871 fax</p>	FILE NO. 24-6772
DRAWN BY D.J.M.		DATE 05-12-06
CHECKED BY M.S.W.		SHEET NO. 44 of 106

SOUTH HEADWALL
IL ROUTE 71
OVER TRIBUTARY TO ILLINOIS RIVER
F.A.P. ROUTE 627 - SEC. (I-1) BR & I
LA SALLE COUNTY
STATION 416+44.62
STRUCTURE NO. 050-C804