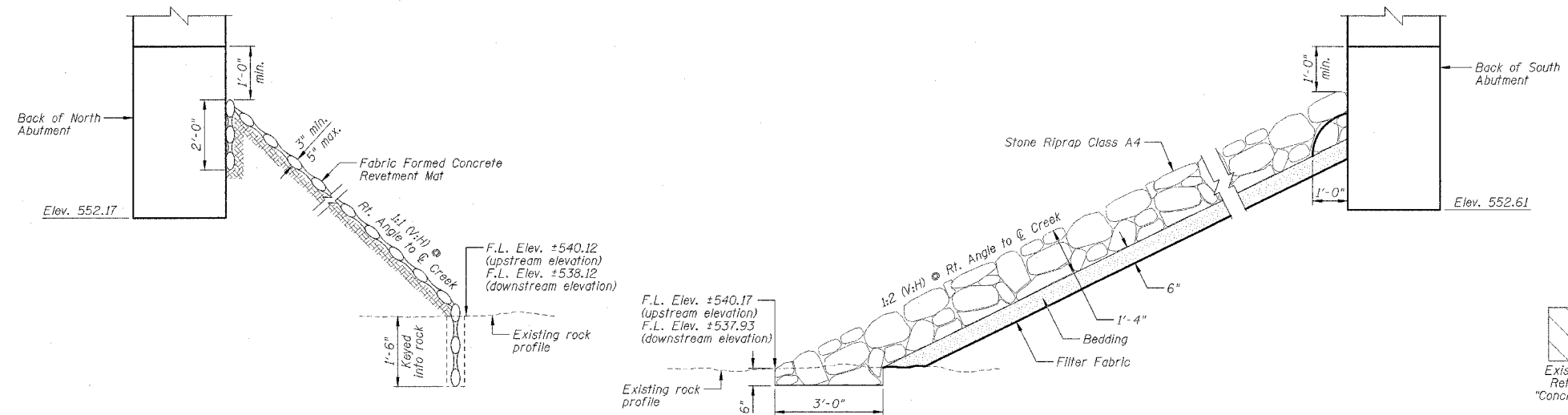


F.A.P. RTE.	SECTION	COUNTY	TOTAL SHEETS	SHEET NO.
627	(I-1) BR & I	LA SALLE	106	63
STA.	TO STA.			
FED. ROAD DIST. NO.	ILLINOIS FED. AID PROJECT			

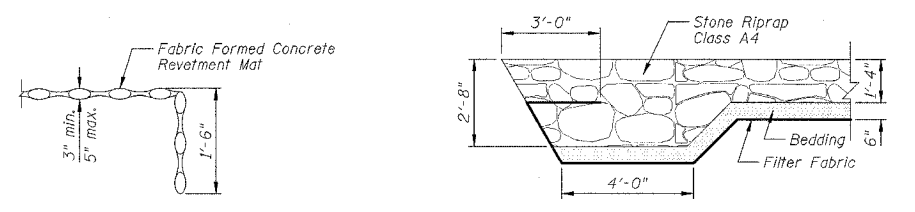
SHEET NO. H3  
OF 26 SHEETS



**FABRIC FORMED CONCRETE REVETMENT MAT DETAIL**

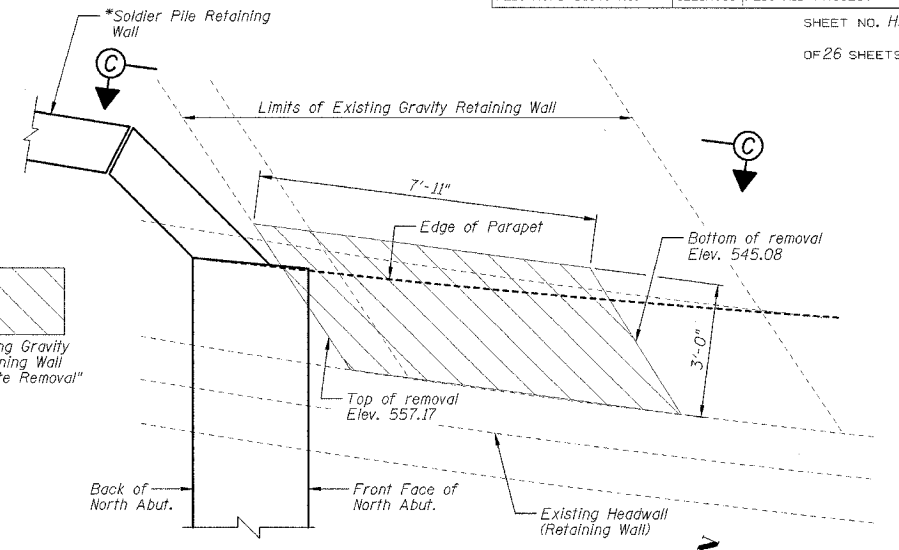
**STONE RIPRAP ANCHOR DETAIL**

Note: Key riprap into sound rock a minimum of 6". The cost to construct the toe is included in the unit cost bid for Stone Riprap Class A4.



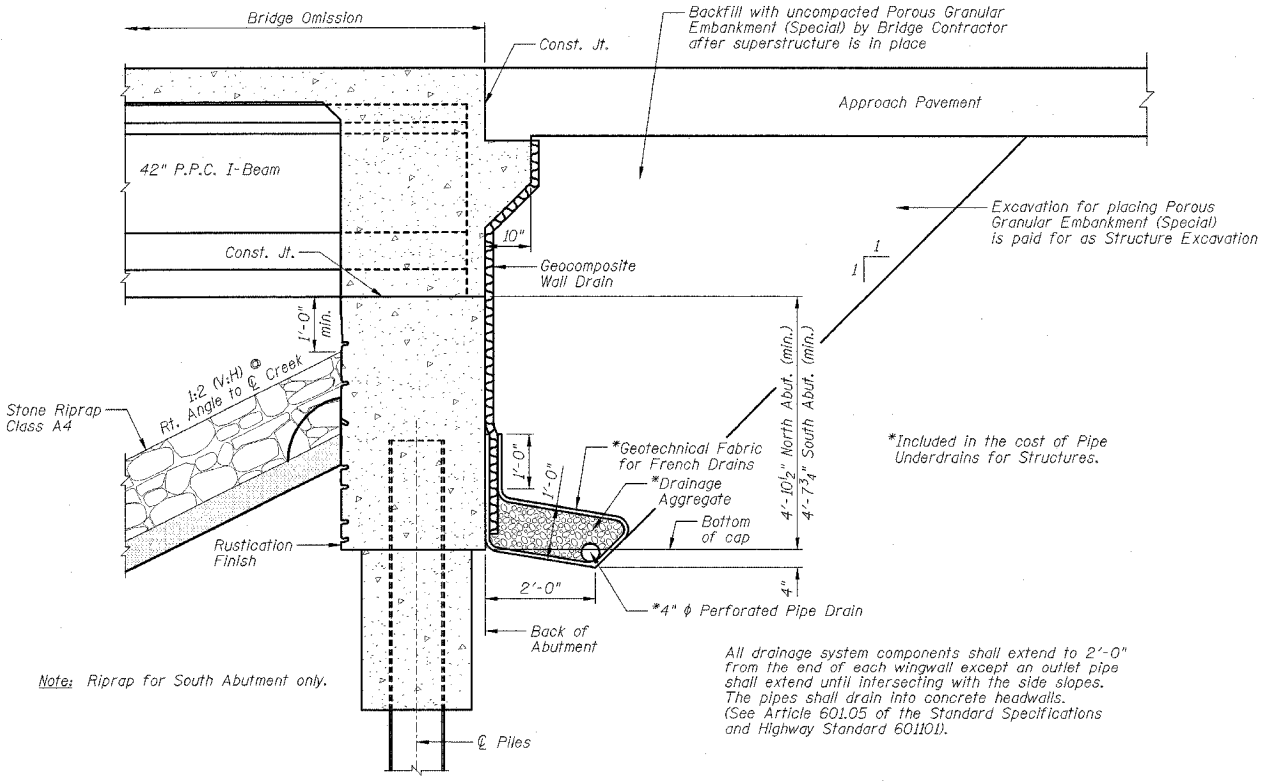
**SECTION A-A**

**SECTION B-B**



**REMOVAL PLAN**

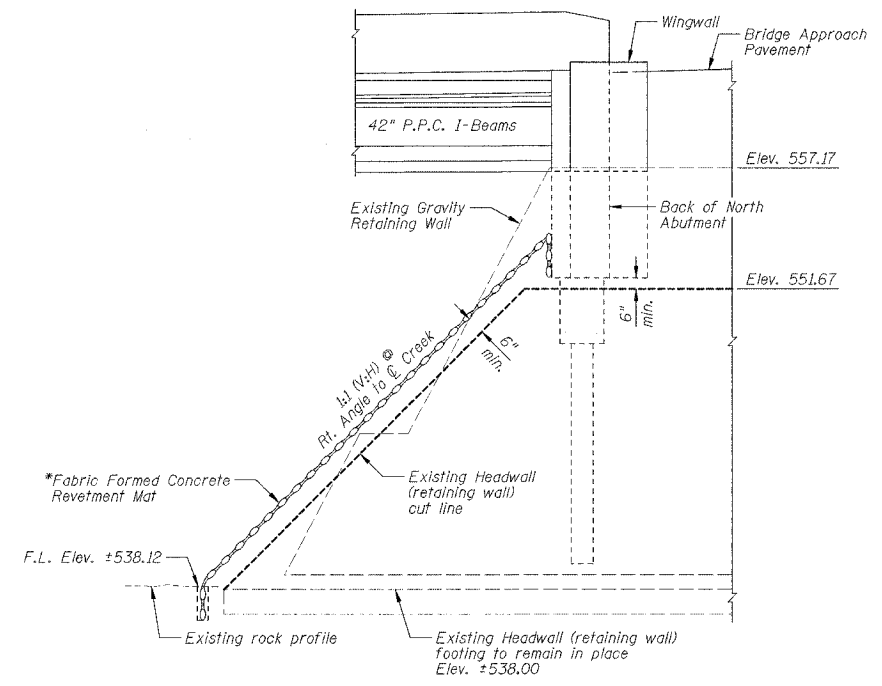
Note: See "Concrete Removal - Isometric View" for dimensions of existing Gravity Retaining Wall "Concrete Removal".



**SECTION THRU ABUTMENT**

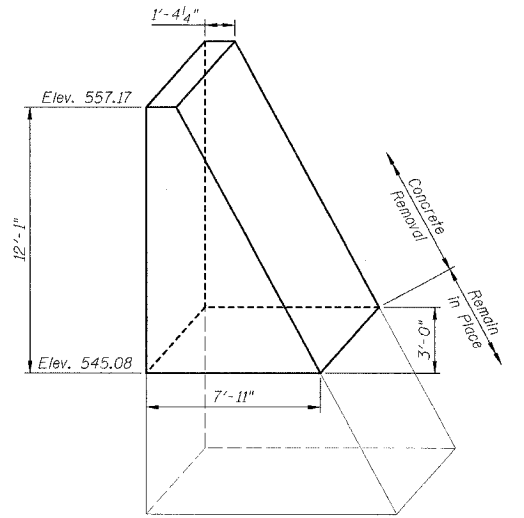
Note: Riprap for South Abutment only.

All drainage system components shall extend to 2'-0" from the end of each wingwall except an outlet pipe shall extend until intersecting with the side slopes. The pipes shall drain into concrete headwalls. (See Article 601.05 of the Standard Specifications and Highway Standard 601101).



**SECTION C-C**

\*To be placed over the top of the existing retaining wall.



**CONCRETE REMOVAL - ISOMETRIC VIEW**  
(Existing Gravity Retaining Wall)

**BILL OF MATERIAL**

Item	Unit	Total
Concrete Removal	Cu. Yd.	6.2

**NOTES:**

- 1.) For location of Section A-A and Section B-B see Sheet H1.
- 2.) For location of Removal Plan see Sheet H1.
- 3.) \*See Soldier Pile Retaining Wall plans, S.N. 050-W004, Sheets G1 thru G7.
- 4.) See Sheet H19 for "Rustication Finish" locations.

**MISCELLANEOUS PLAN,  
SECTIONS AND DETAILS**

**IL ROUTE 71  
OVER TRIBUTARY TO ILLINOIS RIVER  
F.A.P. ROUTE 627 - SEC. (I-1) BR & I  
LA SALLE COUNTY  
STATION 465+35.39  
STRUCTURE NO. 050-0239**

DESIGNED BY: J.M.L.  
DRAWN BY: D.J.M.  
CHECKED BY: M.S.W.

**Farnsworth GROUP**  
2706 McGraw Drive  
Bloomington, Illinois 61704  
309/992-6455 309/953-9871 fax

FILE NO.: 24-6772  
DATE: 05-12-06  
SHEET NO.: 63 of 106