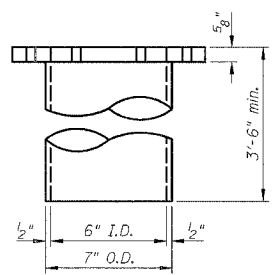
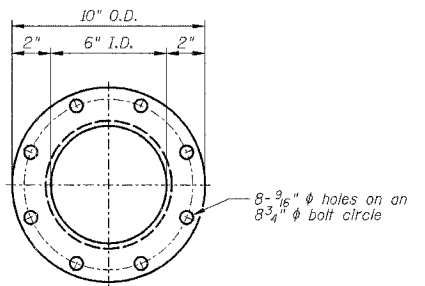
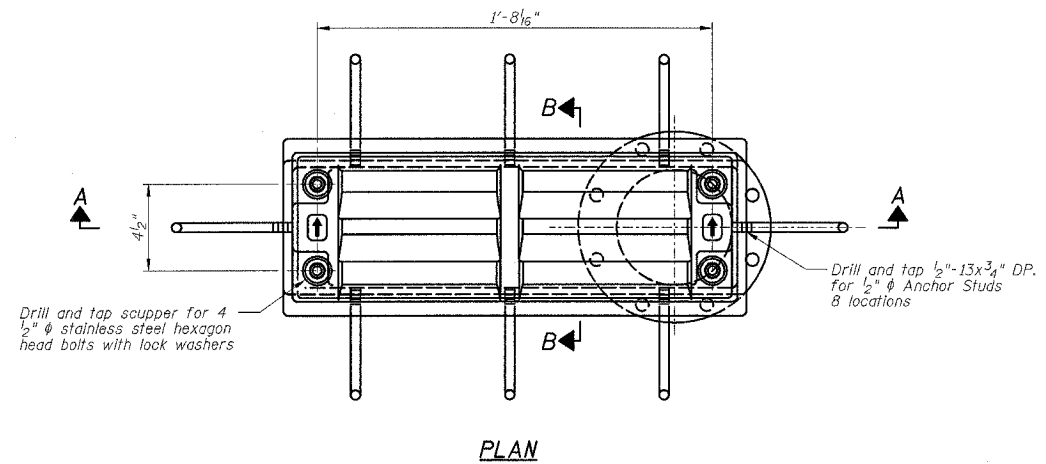
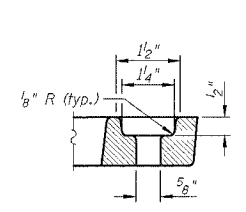


F.A.P. RTE.	SECTION	COUNTY	TOTAL SHEETS	SHEET NO.
627	(I-1) BR & I	LA SALLE	106	71
STA.	TO STA.			
FED. ROAD DIST. NO.	ILLINOIS FED. AID PROJECT			

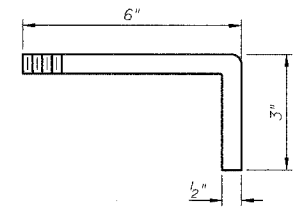
SHEET NO. H11  
OF 26 SHEETS



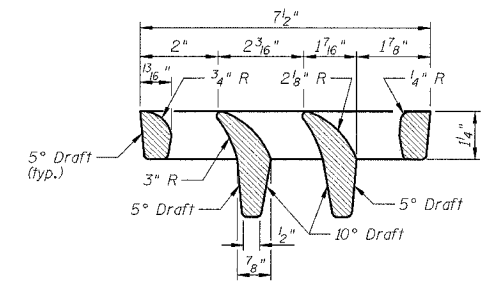
DOWNSPOUT



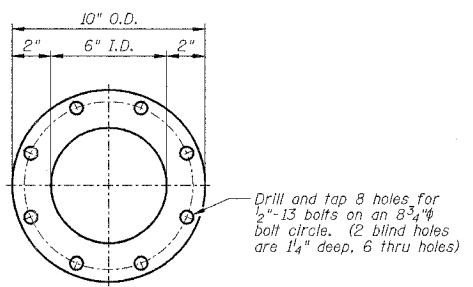
BOLT HOLE DETAIL



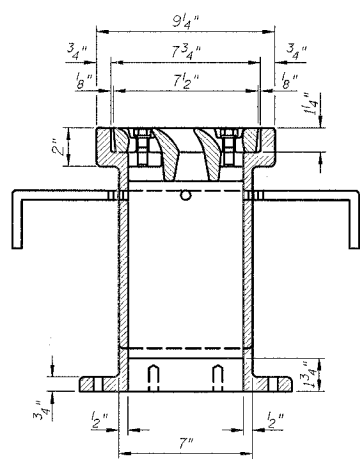
ANCHOR STUD DETAIL



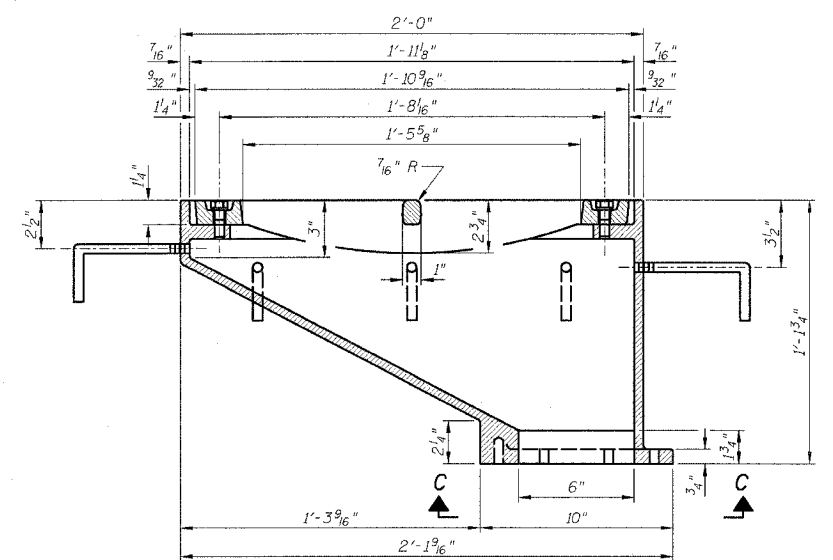
VANE GRATE DETAIL



VIEW C-C



SECTION B-B



SECTION A-A

See Sheets H1 and H7 for scupper location relative to parapet.

- NOTES:**
- 1.) All cast iron parts shall be gray iron conforming to the requirements of AASHTO M 105, Class 35B.
  - 2.) Bolts, anchor studs, washers and nuts shall conform to the requirements of ASTM A 307 and shall be galvanized according to AASHTO M 232.
  - 3.) The grate, frame and downspout shall be galvanized according to AASHTO M 111 and ASTM A 385. Downspouts located on the exterior side of a painted steel fascia beam shall be painted with the finish coat specified for the exterior side of the fascia beam. As an alternate, bolts, anchor studs, washers and nuts may be stainless steel according to Article 1006.29(d) of the Standard Specifications.
  - 4.) Structural steel weldments of equal sections and of the same configuration may be substituted for cast iron. Fillet or full penetration welds shall be used for the weldments. Details shall be submitted to the Engineer for approval.
  - 5.) The Contractor shall take appropriate measures to assure that Protective Coat is not applied to the scupper.
  - 6.) Cost of the Grate, Frame, Downspout, Anchor Studs, Bolts, Washers and Nuts including complete installation of the scupper shall be paid for at the contract unit price each for Drainage Scupper, DS-12.

**BILL OF MATERIALS**

ITEM	UNIT	QUANTITY
Drainage Scupper, DS-12	Each	2

**DRAINAGE SCUPPER, DS-12**  
**IL ROUTE 71**  
**OVER TRIBUTARY TO ILLINOIS RIVER**  
**F.A.P. ROUTE 627 - SEC. (I-1) BR & I**  
**LA SALLE COUNTY**  
**STATION 465+35.39**  
**STRUCTURE NO. 050-0239**

8/1/2000

DESIGNED BY J.M.L. FILE NO. 24-6772

DRAWN BY D.J.M. DATE 05-12-06

CHECKED BY M.S.W. SHEET NO. 71 of 106

**Farnsworth GROUP**  
 2700 McGraw Drive  
 Bloomington, Illinois 61704  
 302/853-6433, 302/853-1071 fax