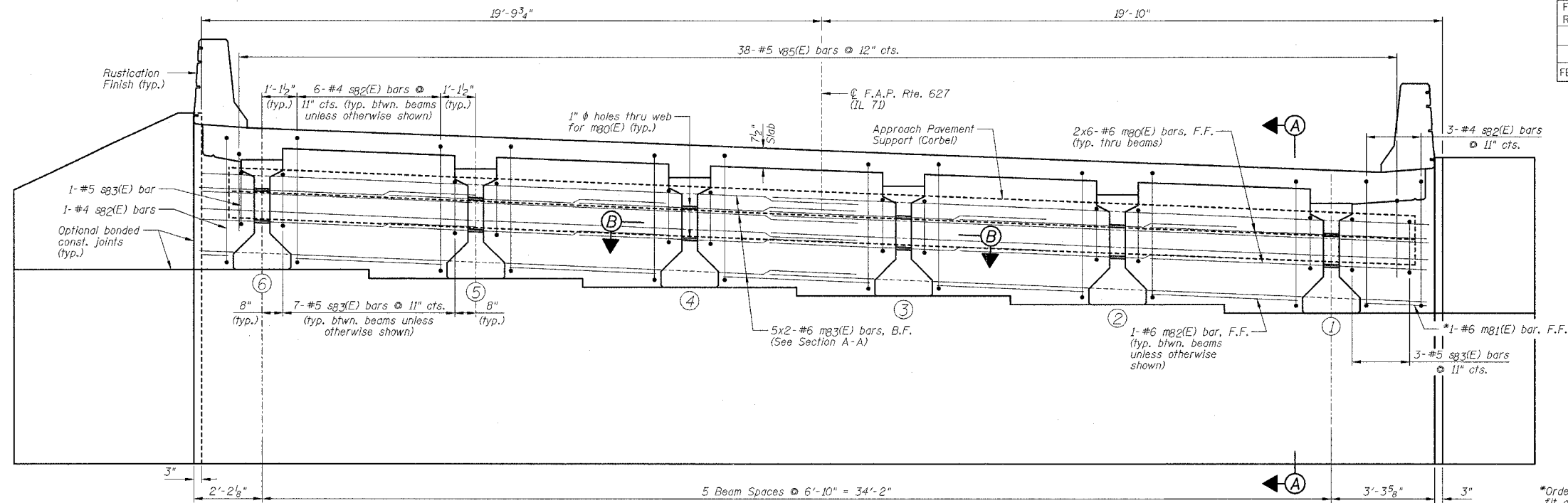


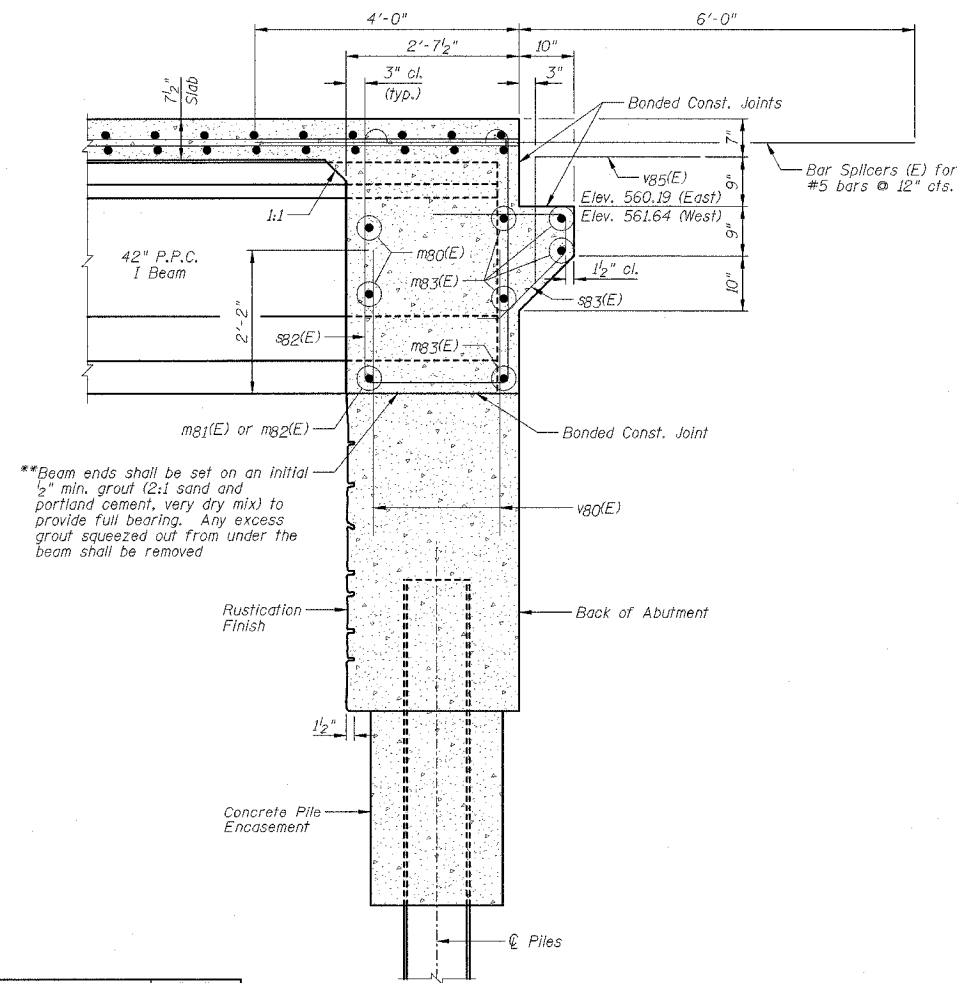
F.A.P. RTE.	SECTION	COUNTY	TOTAL SHEETS	SHEET NO.
627	(I-1) BR & I	LA SALLE	106	72
STA.		TO STA.		
FED. ROAD DIST. NO.		ILLINOIS	FED. AID PROJECT	

SHEET NO. H12
OF 26 SHEETS

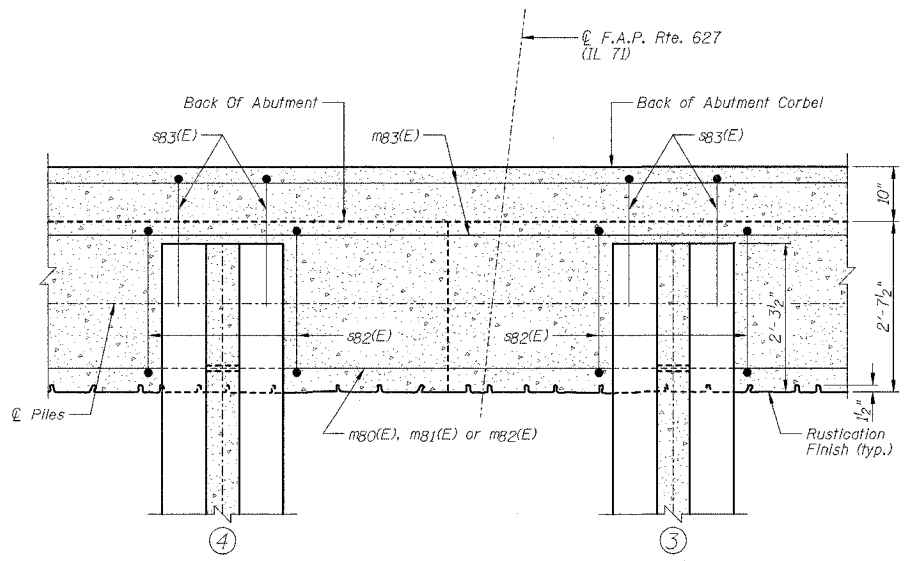


**ELEVATION OF DIAPHRAGM AT NORTH ABUTMENT
(LOOKING NORTH)**

*Order m81(E) bars full length. Cut to fit diaphragm and use remainder of bars in opposite end of diaphragm. See Sheet H10 for Bar Cutting Diagram.



SECTION A-A



SECTION B-B

NOTES:

- 1.) Work this sheet with Sheets H13 thru H16.
- 2.) Quantities for reinforcing steel & concrete superstructure in the diaphragm shall be included with the superstructure. See Sheet H10 for quantities.
- 3.) F.F. denotes Front Face, B.F. denotes Back Face.
- 4.) Reinforcement bars designated (E) shall be epoxy coated.
- 5.) Minimum lap length: #6 bar = 2'-9"
- 6.) See Sheet H10 for Bill of Materials.
- 7.) See Sheet H17 for v80(E) bars.
- 8.) See Sheet H19 for "Rustication Finish" locations.

DIAPHRAGM DETAILS-NORTH ABUTMENT
IL ROUTE 71
OVER TRIBUTARY TO ILLINOIS RIVER
F.A.P. ROUTE 627 - SEC. (I-1) BR & I
LA SALLE COUNTY
STATION 465+35.39
STRUCTURE NO. 050-0239

DESIGNED BY J.M.L.	<p>2700 McGraw Drive Bloomington, Illinois 61704 309/853-8635, 309/853-1671 fax</p>	FILE NO. 24-6772
DRAWN BY D.J.M.		DATE 05-12-06
CHECKED BY M.S.W.		SHEET NO. 72 of 106

**Included in the cost of "Concrete Structures".