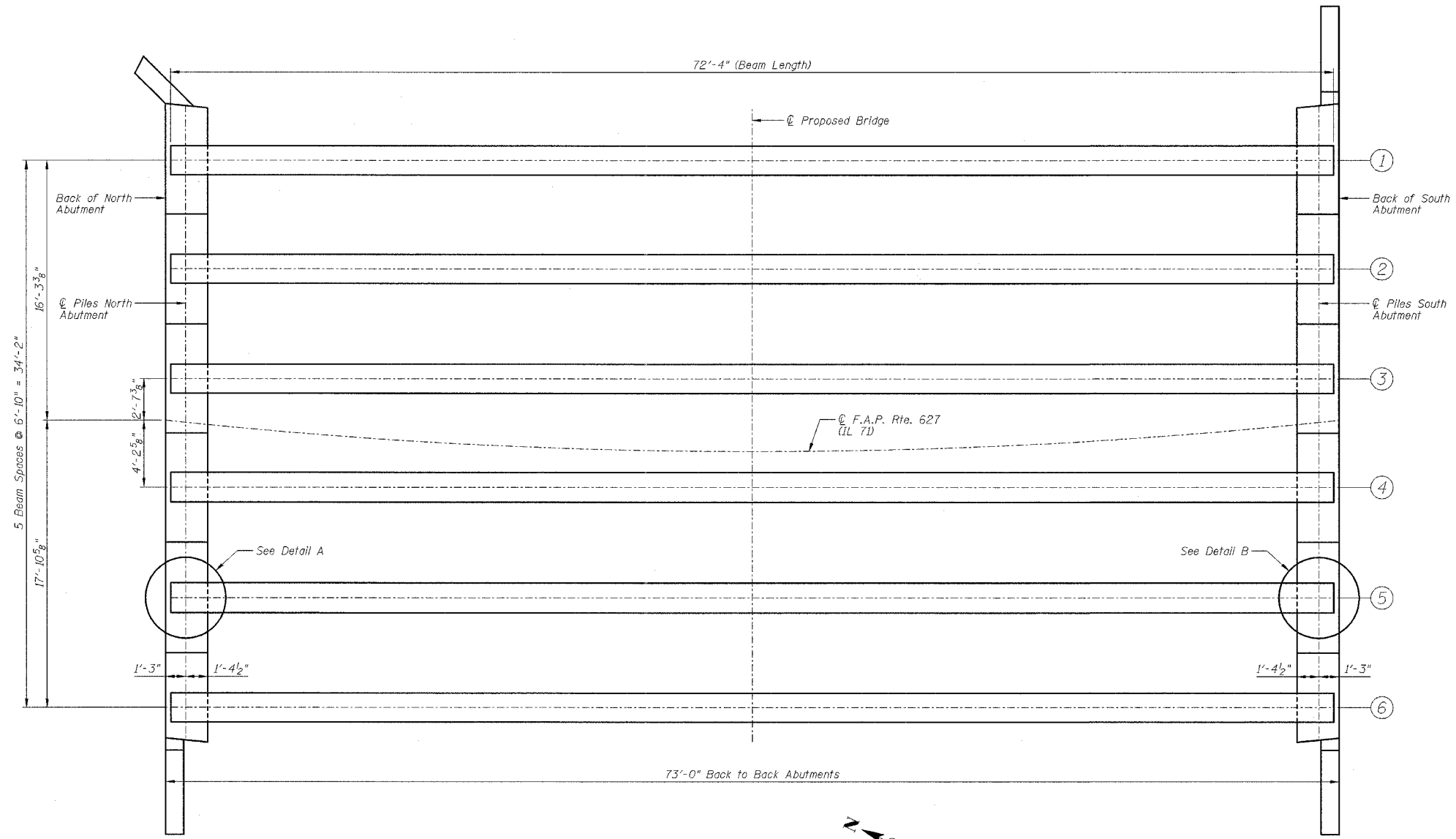


F.A.P. RTE.	SECTION	COUNTY	TOTAL SHEETS	SHEET NO.
627	(I-1) BR & I	LA SALLE	106	74
STA.	TO STA.			
FED. ROAD DIST. NO.	ILLINOIS	FED. AID PROJECT		

SHEET NO. H14
OF 26 SHEETS

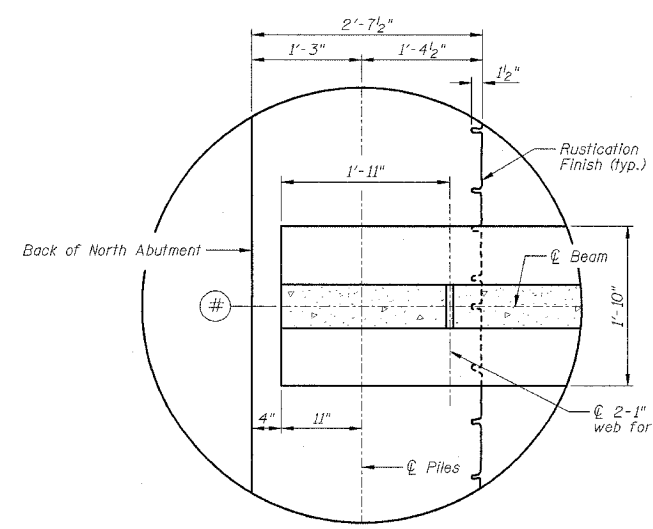


	Span
Strand Pattern	24-A
I	(in ⁴) 90956
I'	(in ⁴) 277500
S _b	(in ³) 5153
S _b '	(in ³) 8733
S _t	(in ³) 3736
S _t '	(in ³) 27160
Q	(k/')
M _Q	(k)
s _Q	(k/')
M _{sQ}	(k)
M _L	(k)
M (Imp)	(k)

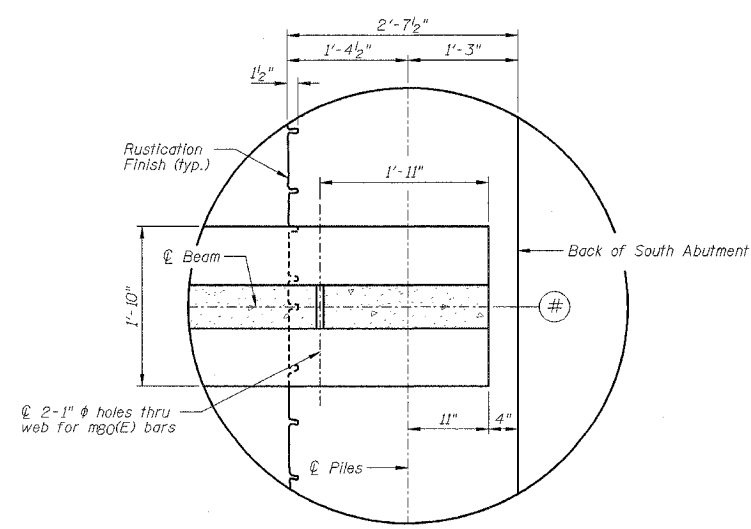
	Abutment
R _Q	(k) 39.9
R _{sQ}	(k) 16.8
R _L	(k) 41.2
Imp.	(k) 9.9
R (Total)	(k) 107.8

I and I' are the moment of inertia and composite moment of inertia of beam section.
 S_b and S_b' are the non-composite and composite section modulus for the bottom fiber of the prestressed beam.
 S_t and S_t' are the non-composite and composite section modulus for the top fiber of the prestressed beam.
 M_Q is the moment due to dead loads on the non-composite prestressed beam. It is conservatively calculated at 0.5 of the span.
 M_{sQ} is the moment due to dead loads on the composite section.
 M_L is the moment due to live load on the composite section.
 M (Imp) is the moment due to live load impact on the composite section.

FRAMING PLAN



DETAIL A



DETAIL B

NOTES:

- 1.) Work this sheet with Sheets H12, H13, H15 & H16.
- 2.) See Sheet H19 for "Rustication Finish" locations.

FRAMING PLAN
IL ROUTE 71
OVER TRIBUTARY TO ILLINOIS RIVER
F.A.P. ROUTE 627 - SEC. (I-1) BR & I
LA SALLE COUNTY
STATION 465+35.39
STRUCTURE NO. 050-0239

DESIGNED BY J.M.L.	<p>2700 McGraw Drive Bloomington, Illinois 61704 309/898-8636, 309/898-1671 fax</p>	FILE NO. 24-6772
DRAWN BY D.J.M.		DATE 05-12-06
CHECKED BY M.S.W.		SHEET NO. 74 of 106