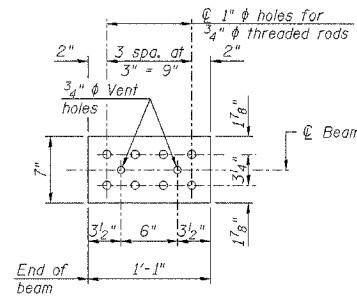
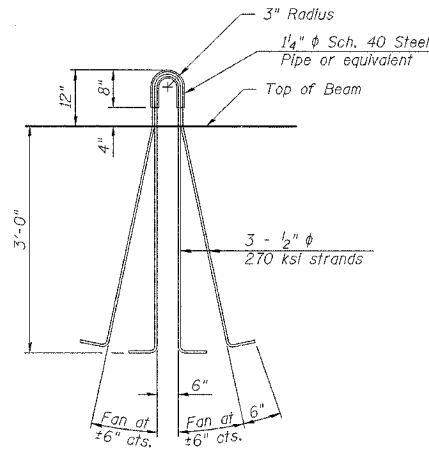


F.A.P. RTE.	SECTION	COUNTY	TOTAL SHEETS	SHEET NO.
627	(I-1) BR & I	LA SALLE	106	76
STA.	TO STA.			
FED. ROAD DIST. NO.	ILLINOIS FED. AID PROJECT			

SHEET NO. H16
OF 26 SHEETS

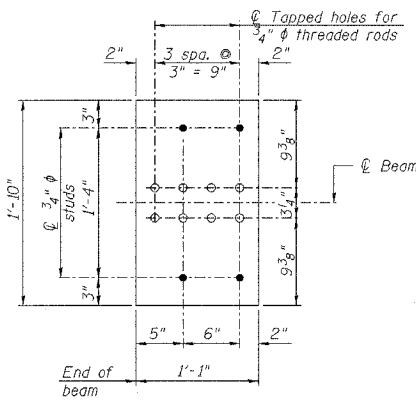


TOP PLATE



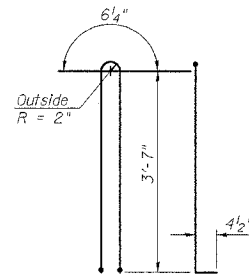
LIFTING LOOP DETAIL

- NOTES:**
- 1.) Prestressing steel shall be uncoated high strength, low relaxation 7-wire strand, Grade 270.
 - 2.) The nominal diameter shall be 1/2" and the nominal cross-sectional area shall be 0.153 sq. in.
 - 3.) Non-prestressing steel shall conform to AASHTO designation M-31 or M 322, Grade 60.
 - 4.) A minimum 2 1/2" diameter lifting pin shall be used to engage the lifting loops during handling.
 - 5.) Reinforcement bars designated (E) shall be epoxy coated.
 - 6.) Cut G6 bars when necessary to maintain 1/2" clearance.
 - 7.) The bottom plates and studs shall be galvanized according to AASHTO M111 and ASTM A385.
 - 8.) Threaded rods shall be ASTM F 1554 Grade 55.
 - 9.) The cut strands at each beam end shall be given two coats of zinc dust spray or paint meeting the requirements of ASTM A 780. The zinc dust spray or paint shall be applied before corrosion appears and allowed to dry according to the manufacturer's specifications prior to another coat of zinc. A concrete sealer meeting the requirements of Section 587 of the Standard Specifications shall be applied to all portions of the I-beam or Bulb-T beam, except the top surface of the top flange and the bottom surface of the bottom flange, starting at each beam end and extending out a distance of 42 inches. The sealer shall be applied after visible crack growth has subsided. This work shall be performed by the producer and included with the cost of the beam.

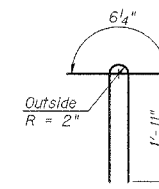


BOTTOM PLATE

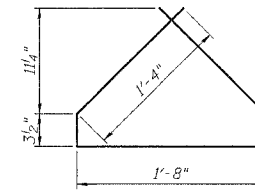
See bearing details for pinhole locations when required.



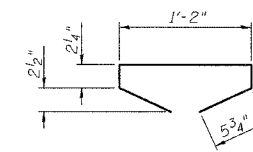
BAR G1



BAR G2



BAR G4



BAR G5

BILL OF MATERIAL

Item	Unit	Total
Furnishing and Erecting Precast Prestressed Concrete I-Beams, 42"	Ft.	434

42" PPC I-BEAM DETAILS

IL ROUTE 71
OVER TRIBUTARY TO ILLINOIS RIVER
F.A.P. ROUTE 627 - SEC. (I-1) BR & I
LA SALLE COUNTY
STATION 465+35.39
STRUCTURE NO. 050-0239

PI-4-42D 7-15-05

DESIGNED BY J.M.L.	<p>2700 McGraw Drive Bloomington, Illinois 61704 309/893-8635, 309/893-1571 fax</p>	FILE NO. 24-6772
DRAWN BY D.J.M.		DATE 05-12-06
CHECKED BY M.S.W.		SHEET NO. 76 of 106