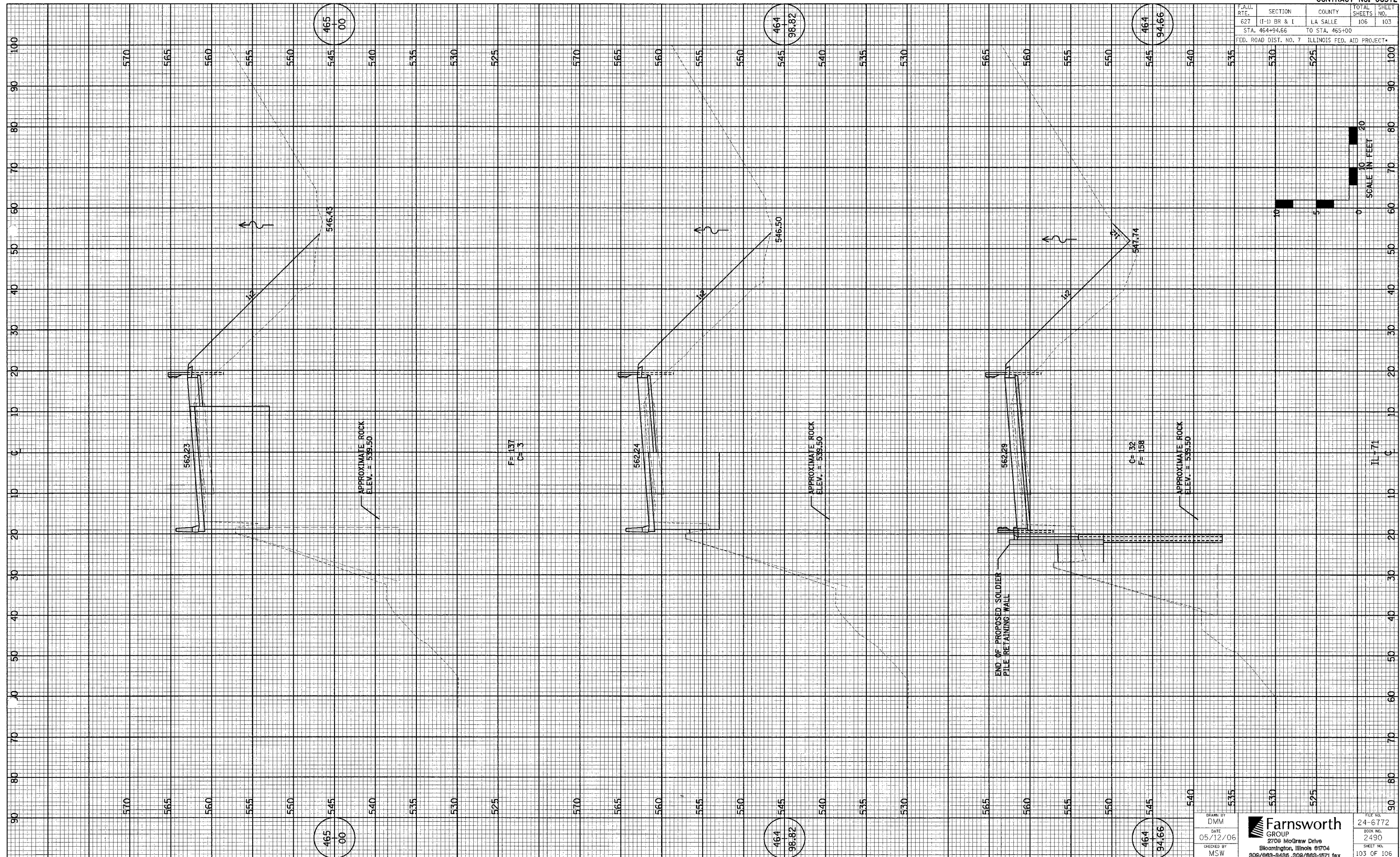


F.A.U. RTE.	SECTION	COUNTY	TOTAL SHEETS	SHEET NO.
627	(I-1) BR & I	LA SALLE	106	103
STA. 464+94.66		TO STA. 465+00		
FED. ROAD DIST. NO. 7 ILLINOIS FED. AID PROJECT.				



465
00

464
98.82

464
94.66

465
00

464
98.82

464
94.66

DRAWN BY DMM		FILE NO. 24-6772
DATE 05/12/06		BOOK NO. 2490
CHECKED BY MSW	2706 McGraw Drive Bloomington, Illinois 61704 309/683-9436, 309/683-1571 fax	SHEET NO. 103 OF 106

IL-71