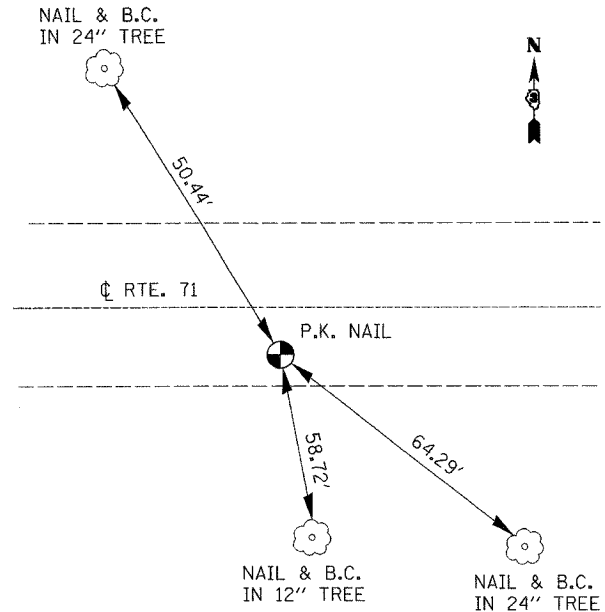
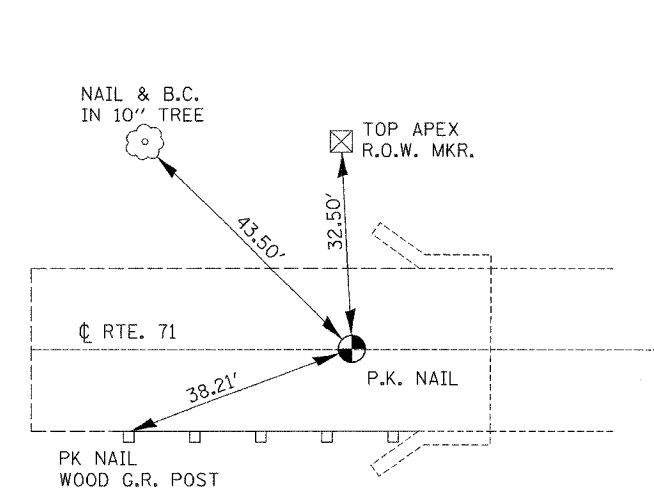


F.A.P. RTE.	SECTION	COUNTY	TOTAL SHEETS	SHEET NO.
627	U-BR	La SALLE	38	8
STA.		TO STA.		
FED. ROAD DIST. NO.	ILLINOIS	FED. AID PROJECT		



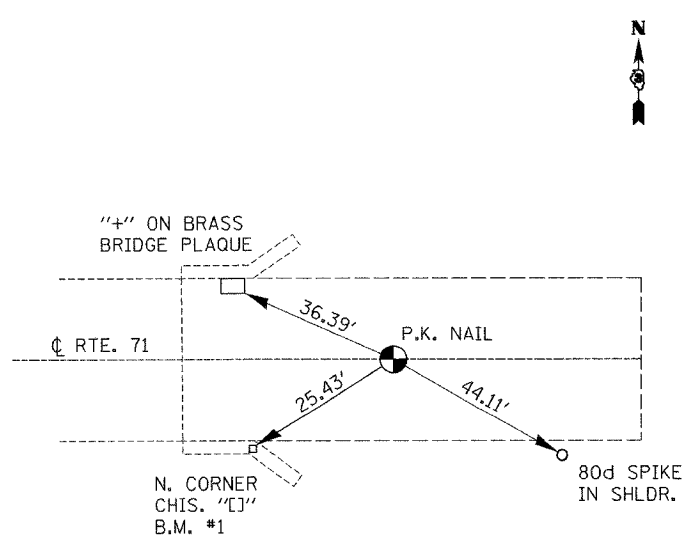
P.I. STA. 96 + 35.53

P.K. NAIL SOUTH OF ϕ IL RTE 71



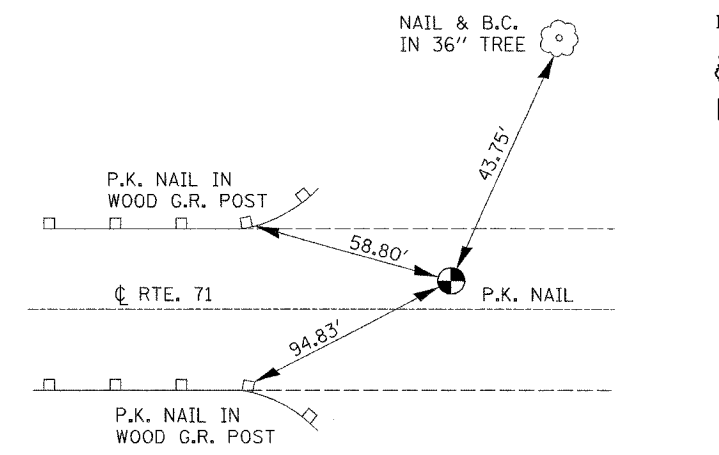
P.T. STA. 98 + 53.50

FOUND P.K. NAIL ON ϕ IL RTE 71



P.C. STA. 99 + 84.61

FOUND P.K. NAIL ON ϕ IL RTE 71



P.I. STA. 101 + 68.91

P.K. NAIL NORTH OF ϕ IL RTE 71

PLOT DATE = 02/17/06
 FILE NAME = C:\WORK\PROJECTS\66544\108\108.dgn
 PLOT SCALE = 80.00000 / 1.00
 USER NAME = CFC

COOMBE-BLOXDORF P.C.
 Engineers / Land Surveyors
 Springfield, Illinois
 Design Firm License No. 184-002703

REVISIONS	
NAME	DATE

ILLINOIS DEPARTMENT OF TRANSPORTATION

CROSS TIES
 IL ROUTE 71 OVER UNNAMED STREAM
 FAP RT 627, SECTION U-BR
 LA SALLE COUNTY

SCALE:
 DATE: 02/03/06

DRAWN BY
 CHECKED BY