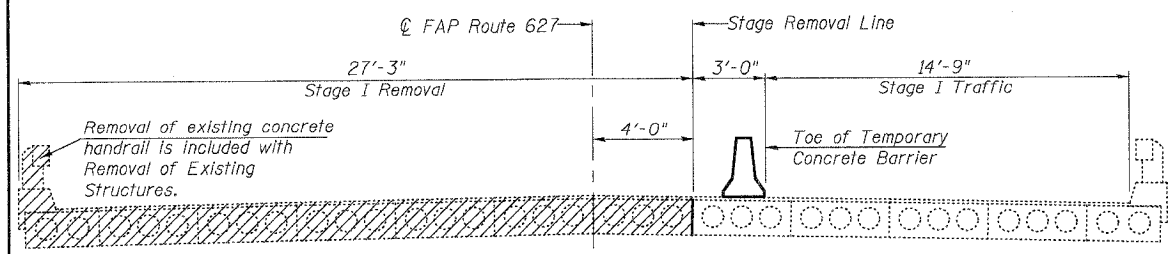


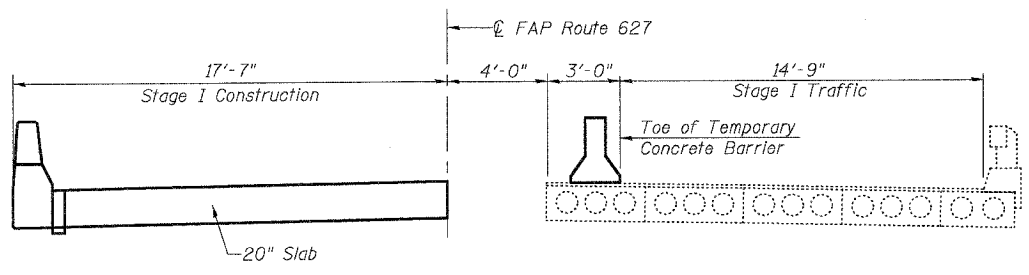
ROUTE NO. FAP 627	SECTION U-BR	COUNTY LA SALLE	SHEET NO. 38	SHEET NO. 17	SHEET NO. 2 12 SHEETS
FED. ROAD DIST. NO. 7		ILLINOIS	FED. AID PROJECT		

CONTRACT NO. 66544

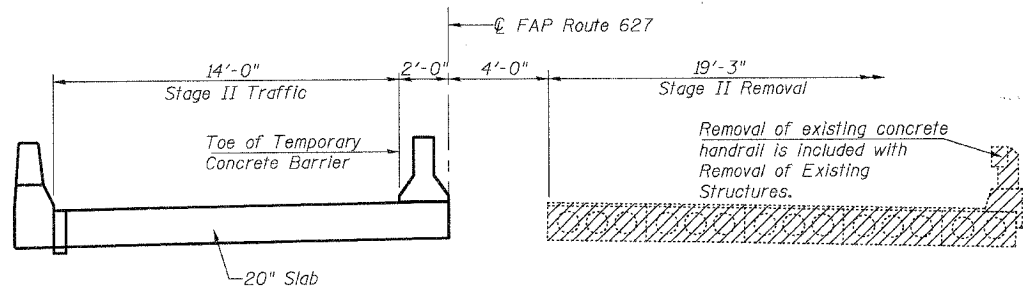
NOTES
 All Cross Sections are looking east.
 Hatched areas indicate "Removal of Existing Structures".
 For details of Temporary Concrete Barrier see sheet 3 of 12 sheets.
 For quantity of "Temporary Concrete Barrier" see Roadway Plans.
 Stage removal line for substructure is same as superstructure.



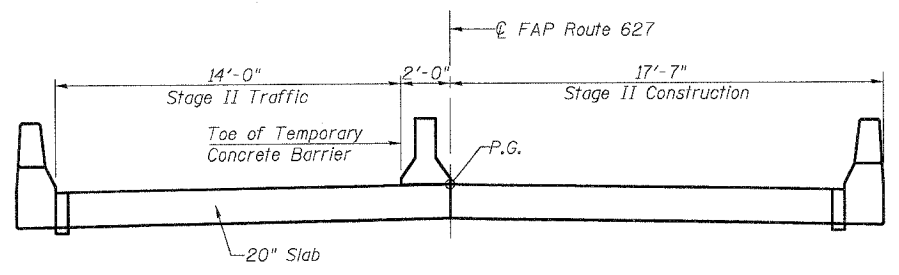
STAGE I REMOVAL
 (Dimensions @ Right Angles)



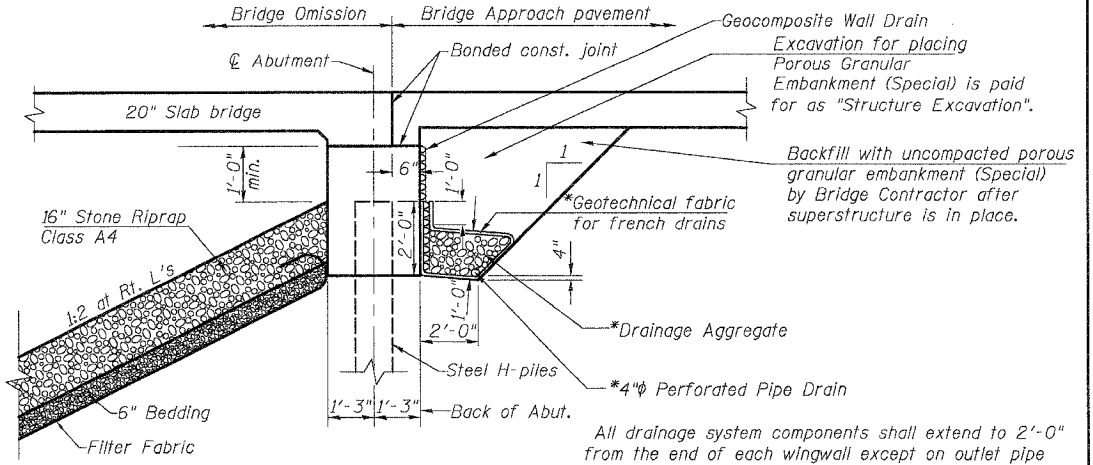
STAGE I CONSTRUCTION
 (Dimensions @ Right Angles)



STAGE II REMOVAL
 (Dimensions @ Right Angles)



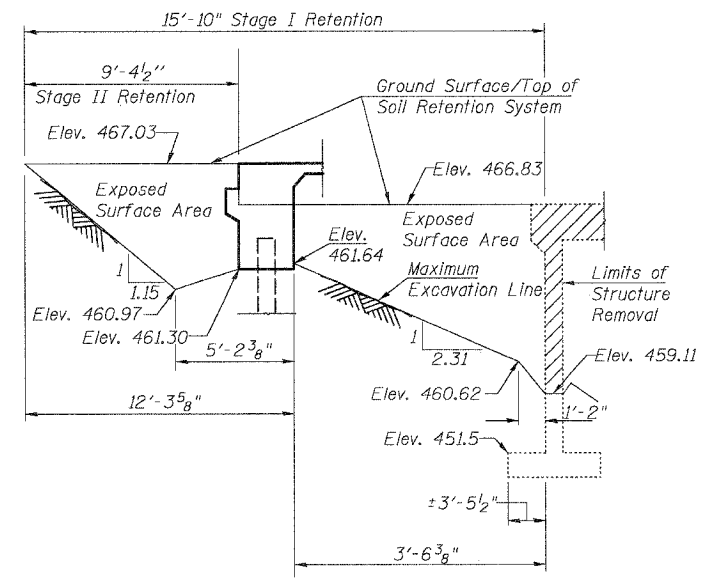
STAGE II CONSTRUCTION
 (Dimensions @ Right Angles)



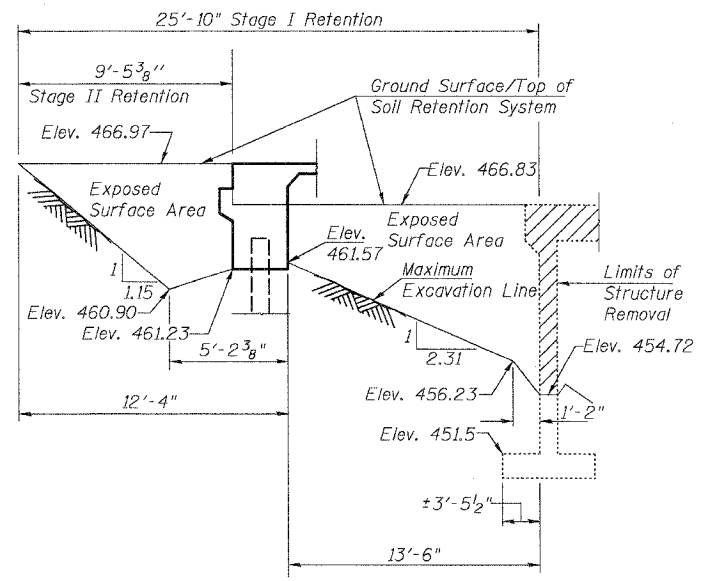
SECTION THRU ABUTMENT
 (Horiz. Dimensions at Right Angles)

* Included in the cost of Pipe Underdrains for Structures

All drainage system components shall extend to 2'-0" from the end of each wingwall except on outlet pipe shall extend until intersecting with the side slopes. The pipes shall drain into concrete headwalls. (See Article 601.05 of the Standard Specifications and Highway Standard 601101).



**EAST ABUTMENT
 TEMPORARY SOIL RETENTION SYSTEM**
 (Looking South)(Dimensions parallel to C)



**WEST ABUTMENT
 TEMPORARY SOIL RETENTION SYSTEM**
 (Looking North)(Dimensions parallel to C)

STAGE CONSTRUCTION SEQUENCE

- 1) Direct Stage I Traffic as shown.
- 2) Construct Stage I Temporary Soil Retention System.
- 3) Sawcut each existing abutment to a minimum depth of 1' at removal line from bottom of existing cap to top of existing footing.
- 4) Excavate behind existing abutments prior to removal of existing Stage I superstructure.
- 5) Proceed with Stage I removal and construction.
- 6) Direct Stage II traffic as shown.
- 7) Remove and relocate Stage I Soil Retention System as required for Stage II.
- 8) Excavate behind existing abutments prior to removal of existing Stage II superstructure.
- 9) Proceed with Stage II removal and construction.

NOTE

A cantilevered sheet piling design does not appear feasible and additional members or other retention systems may be necessary. The Contractor shall submit a temporary soil retention system design, including plan details and calculations for review and acceptance by the Engineer.

05/17/2006
 -02-stage-consl.dgn

ILLINOIS DEPARTMENT OF TRANSPORTATION	
SHEET TITLE STAGE CONSTRUCTION	
PROJECT FAP ROUTE 627 (IL 71) OVER UNNAMED STREAM	PROJECT NO. 05025-1
SECTION U-BR	SCALE
LA SALLE COUNTY	DATE 12/17/05
STATION 98+58.9	DRAWN BY TFG
STRUCTURE NUMBER 050-0243	CHECKED BY KPS/BD/MCB
COOMBE-BLOXDORF P.C. Engineers / Land Surveyors Springfield, Illinois Design Firm License No. 184-002703	DRAWING NO. 2 OF 12 SHTS